

NOTES

THE COST OF THE BARRIER RAIL ON THE APPROACH SLAB SHALL BE INCLUDED IN THE LUMP SUM CONTRACT PRICE BID FOR BRIDGE APPROACH SLABS.

APPROACH SLAB SHALL NOT BE CONSTRUCTED PRIOR TO COMPLETION OF THE BRIDGE DECK.

FOR REINFORCED BRIDGE APPROACH FILL INCLUDING FABRIC, IMPERMEABLE GEOMEMBRANE, 102mm Ø DRAINAGE PIPE, #78M STONE, AND SELECT MATERIAL, SEE ROADWAY PLANS.

TEMPORARY DRAINAGE AND TEMPORARY BERM AND SLOPE DRAINS WILL BE PAID FOR UNDER THE LUMP SUM PRICE FOR BRIDGE APPROACH SLAB.

AREA BETWEEN THE WINGWALL AND APPROACH SLAB SHALL BE GRADED TO DRAIN THE WATER AWAY FROM THE FILL FACE OF THE BRIDGE.

THE 150mm COMP. A.B.C. SHALL EXTEND 3m BEYOND THE END OF THE APPROACH SLAB AND 300mm OUTSIDE OF EACH EDGE OF THE SLAB.

THE CONTRACTOR MAY USE 100mm TYPE B-25.0B ASPHALT CONCRETE COURSE IN LIEU OF 150mm COMP. A.B.C. IF THIS OPTION IS USED, THE BASE COURSE SHALL EXTEND 300mm BEYOND THE END OF THE APPROACH SLAB AND THE WIDTH SHALL BE THE SAME AS THAT OF THE APPROACH SLAB.

THE CONTRACTOR MAY USE 125mm CLASS "A" CONCRETE BASE IN LIEU OF 150mm COMP. A.B.C. IF THIS OPTION IS USED, THE CONCRETE BASE SHALL EXTEND 300mm BEYOND THE END OF THE APPROACH SLAB AND THE WIDTH SHALL BE THE SAME AS THAT OF THE APPROACH SLAB. THE CONCRETE SHALL BE FINISHED TO A SMOOTH SURFACE AND A LAYER OF 13.6 kg. ROOFING FELT SHALL BE PLACED BETWEEN THE CONCRETE BASE AND THE APPROACH SLAB TO PREVENT BOND. THE APPROACH SLAB SHALL NOT BE CAST UNTIL THE CONCRETE BASE HAS REACHED AN AGE OF THREE CURING DAYS.

THE JOINT SHALL BE SAWED PRIOR TO THE CASTING OF THE BARRIER RAIL.

FOR NOTES FOR GUARDRAIL ANCHOR ASSEMBLY, SEE SHEET 2 OF 5.

WITH EVAZOTE JOINT SEAL

FOR EVAZOTE JOINT SEALS, SEE SPECIAL PROVISIONS.

THE NOMINAL UNCOMPRESSED SEAL WIDTH OF THE EVAZOTE JOINT SEAL SHALL BE 64mm.

BILL OF MATERIAL

FOR ONE APPROACH SLAB (2 REQ'D)

BAR	NO.	SIZE	TYPE	LENGTH	MASS
*A1	52	#16	STR.	13,940	1,125
A2	106	#13	STR.	7,260	765
*B1	47	#19	STR.	7,360	773
B2	47	#25	STR.	7,520	1,404
*B3	14	#16	STR.	3,560	77
*B4	2	#16	3	1,940	6
*B5	47	#19	STR.	7,460	784
B6	47	#25	STR.	7,620	1,423
*S1	50	#16	STR.	980	76
*S2	50	#16	1	1220	95
*S3	20	#16	2	680	21

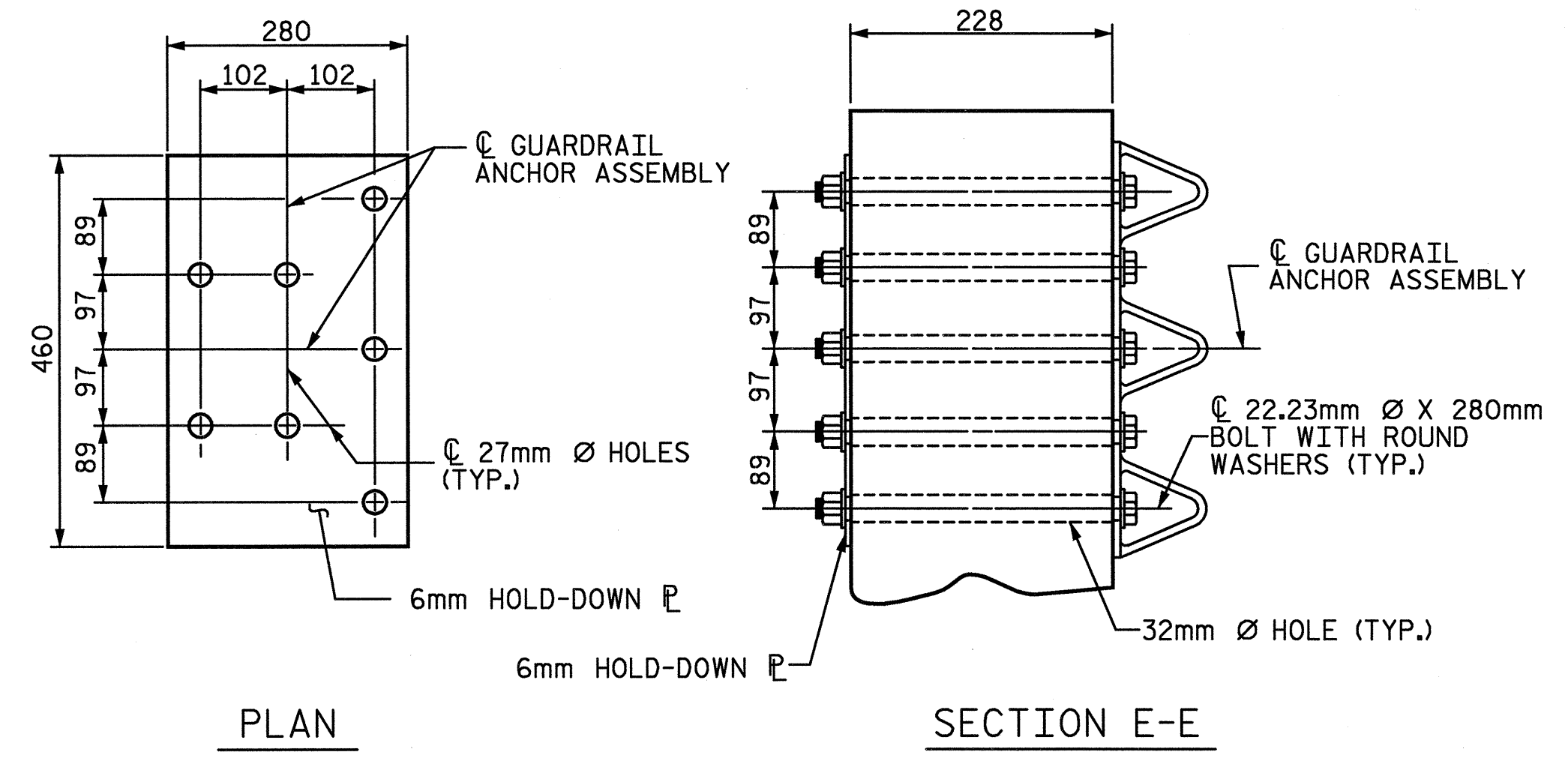
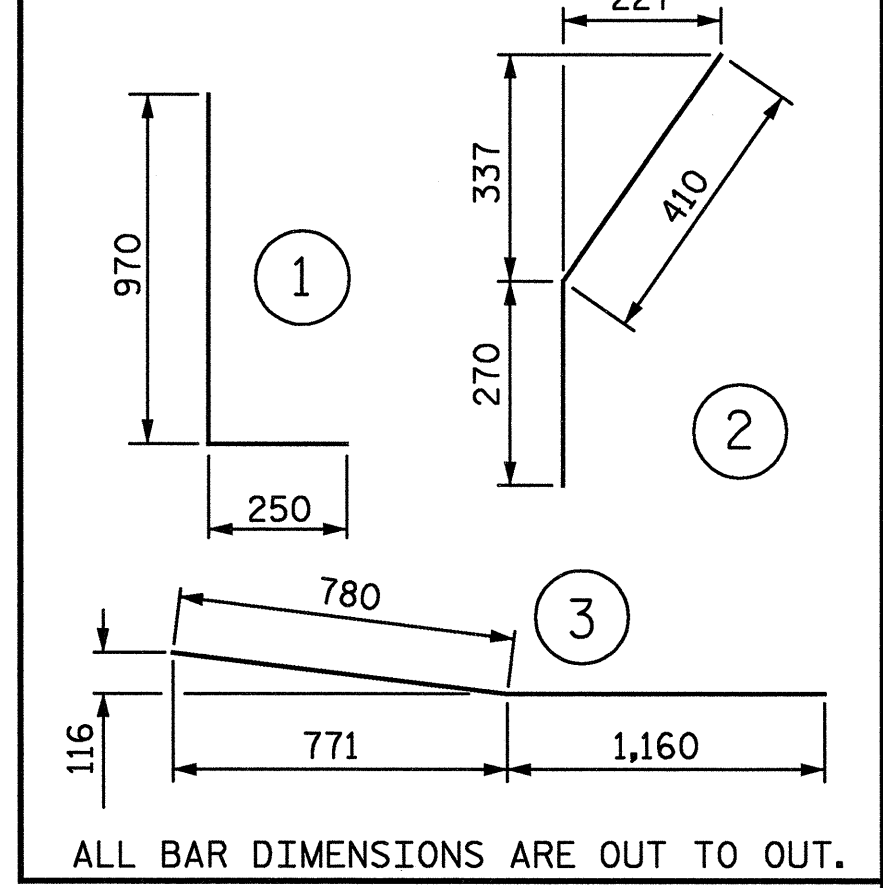
REINFORCING STEEL	kg.	3,592
*EPOXY COATED REINFORCING STEEL	kg.	2,957

CLASS AA CONCRETE BREAKDOWN

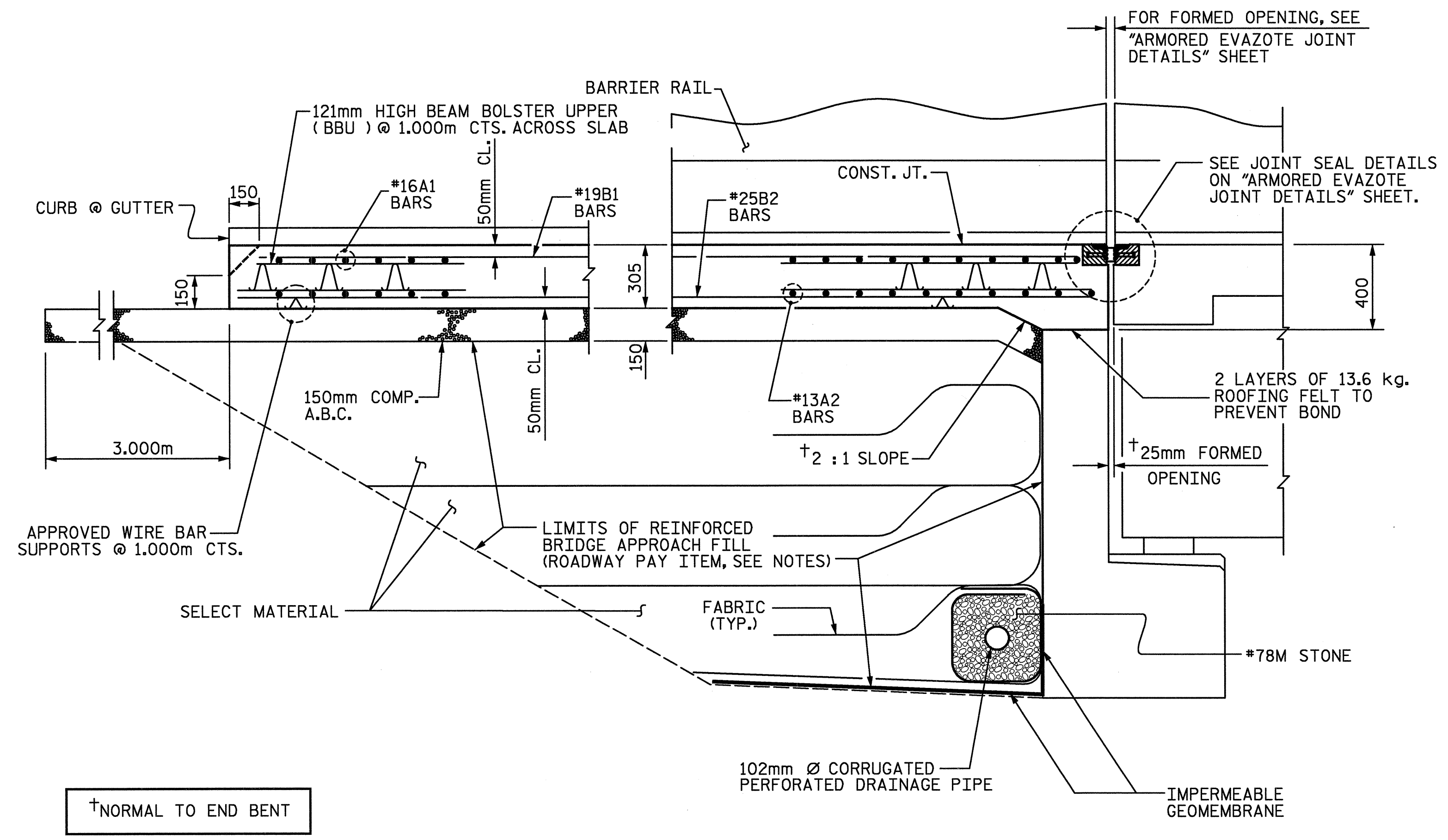
POUR 1 SLAB AND CURB	C. M.	33.8
POUR 2 RAIL	C. M.	1.6

CLASS AA CONCRETE	C. M.	35.4
-------------------	-------	------

BAR TYPES



GUARDRAIL ANCHOR ASSEMBLY DETAILS

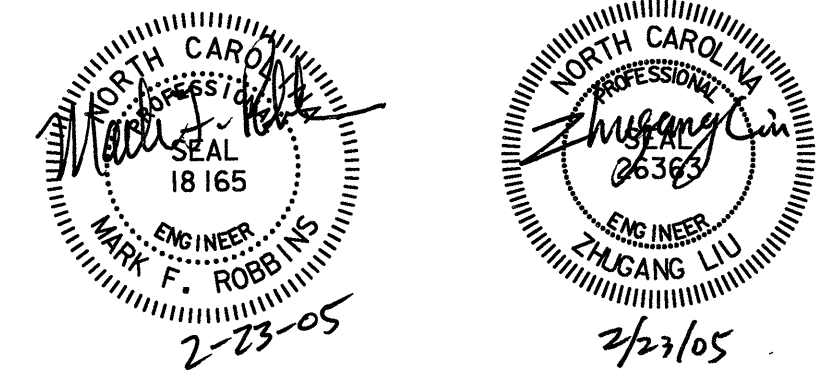


SECTION THRU SLAB

PROJECT NO. R-2552C
 JOHNSTON COUNTY
 STATION: POS 16+52.599 -Y4-
 POC 9+28.021 -FLYOVER-
 SHEET 1 OF 5

STATE OF NORTH CAROLINA
 DEPARTMENT OF TRANSPORTATION
 RALEIGH

BRIDGE APPROACH SLAB
 FOR FLEXIBLE PAVEMENT
 WITH BARRIER RAIL



REVISIONS					SHEET NO.
NO.	BY:	DATE:	NO.	BY:	DATE:
1			3		
2			4		

ASSEMBLED BY : LGH	DATE : 12-04
CHECKED BY : TBQ	DATE : 12-04
DRAWN BY : RWW 8/01	ADDED 12/01
CHECKED BY : LES 8/01	REV. 5/7/03R RWW/JTE

D-1748.32

STD. NO. BAS5SM

02/23/2005 10:44:47 AM m:\proj\3109-300\ustation\struct\final\3109-300_bas5sm.dgn