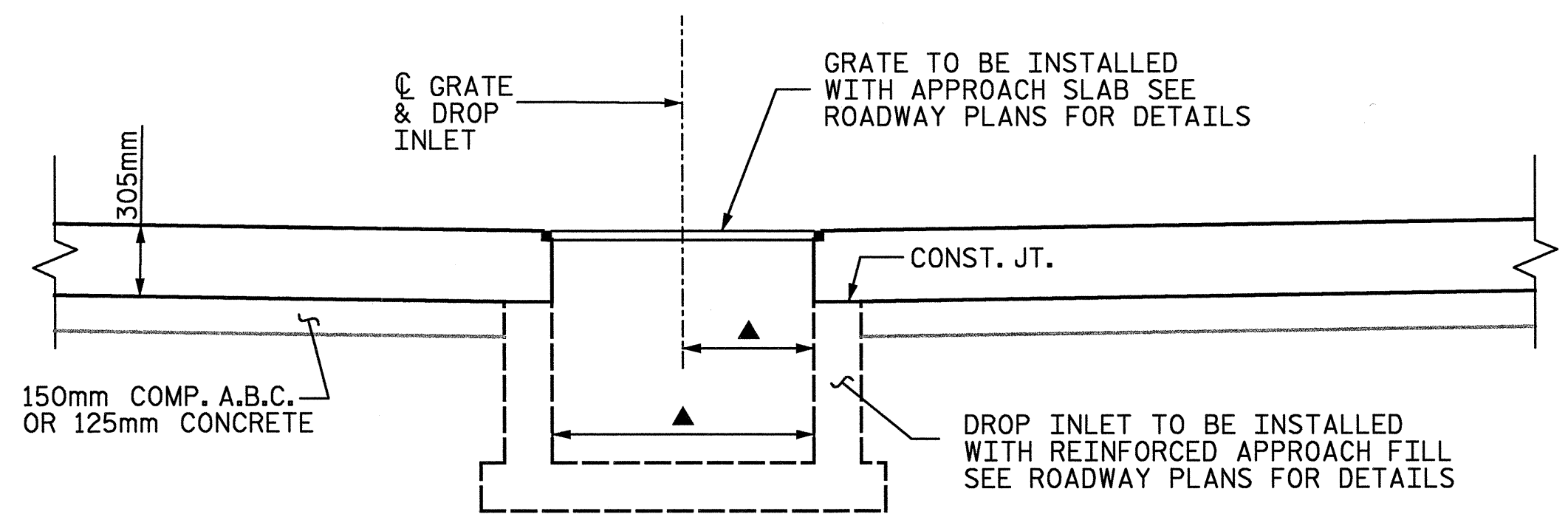


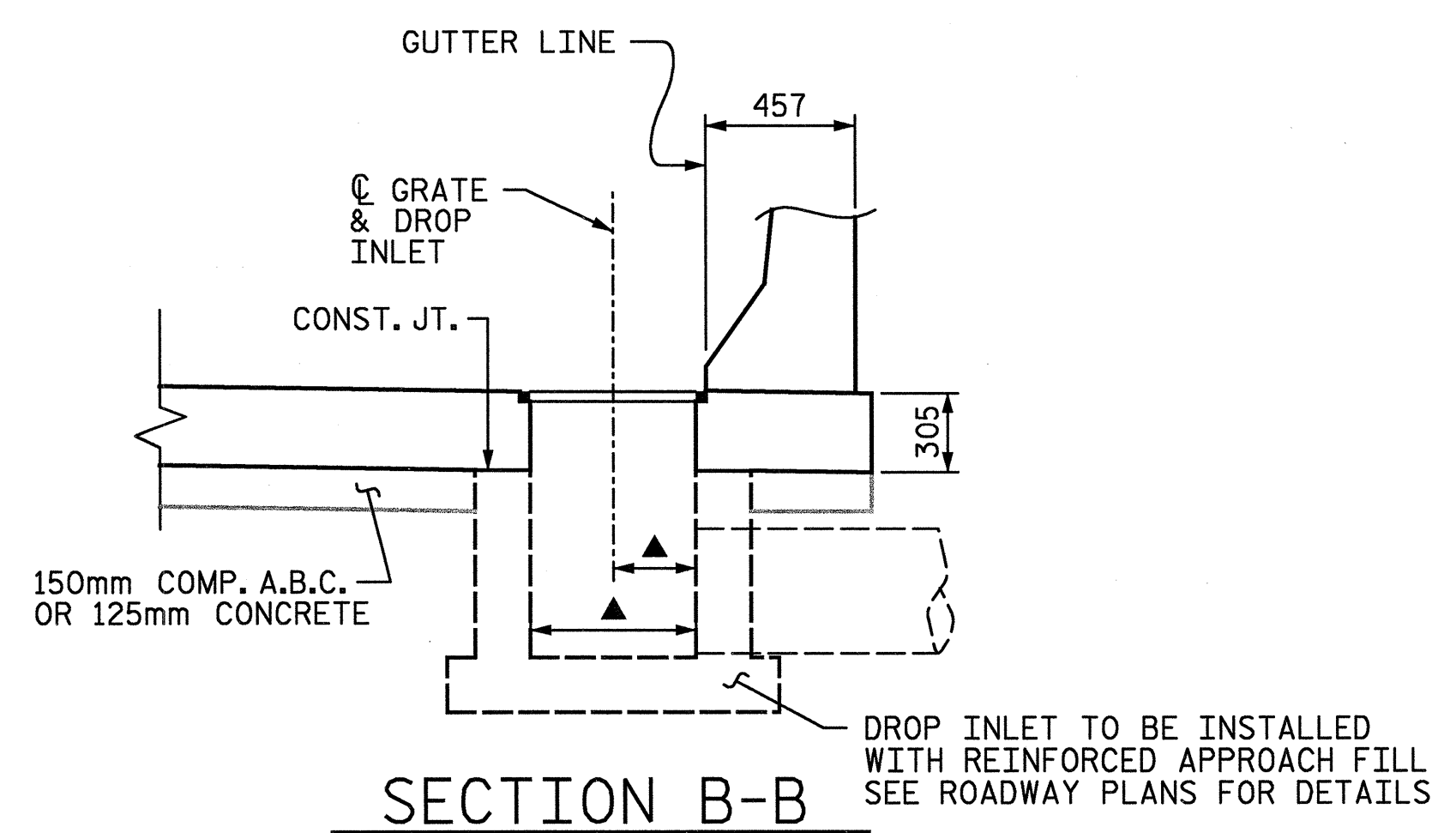
TYPICAL PART PLAN

NOTE: REINFORCING STEEL SHALL BE CUT AND SHIFTED TO ALLOW FOR PLACEMENT OF DROP INLET



SECTION A-A

A DROP INLET REQUIRED AT END BENT 1 ONLY. FOR DROP INLET LOCATION AND DETAILS, SEE ROADWAY PLANS.



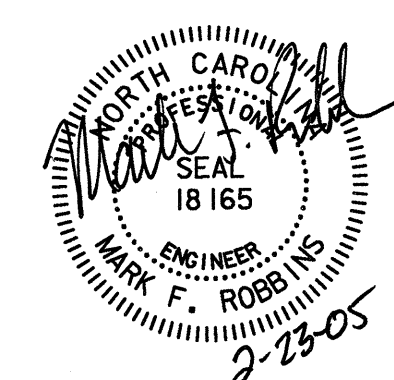
SECTION B-B

PROJECT No. R-2552C
 JOHNSTON COUNTY
 STATION: POS 16+52.599 -Y4-
 POC 9+28.021 -FLYOVER-

SHEET 5 OF 5

REVISIONS		DATE	
NO.	BY	NO.	DATE
1		3	
2		4	

STATE OF NORTH CAROLINA	
DEPARTMENT OF TRANSPORTATION	
RALEIGH	
DRAINAGE STRUCTURE ON APPROACH SLAB	
DRAWN BY: LGH	DATE: 12-04
CHECKED BY: TBQ	DATE: 12-04
DWG. NO. D-1748.36	



RALPH WHITEHEAD ASSOCIATES, INC.
 CONSULTING ENGINEERS
 P.O. BOX 35624 CHARLOTTE, N.C. 28235

02/23/2005 10:44:45 AM n:\proj\3109-300\ustation\struct\find\3109-300_bas_drain.dgn