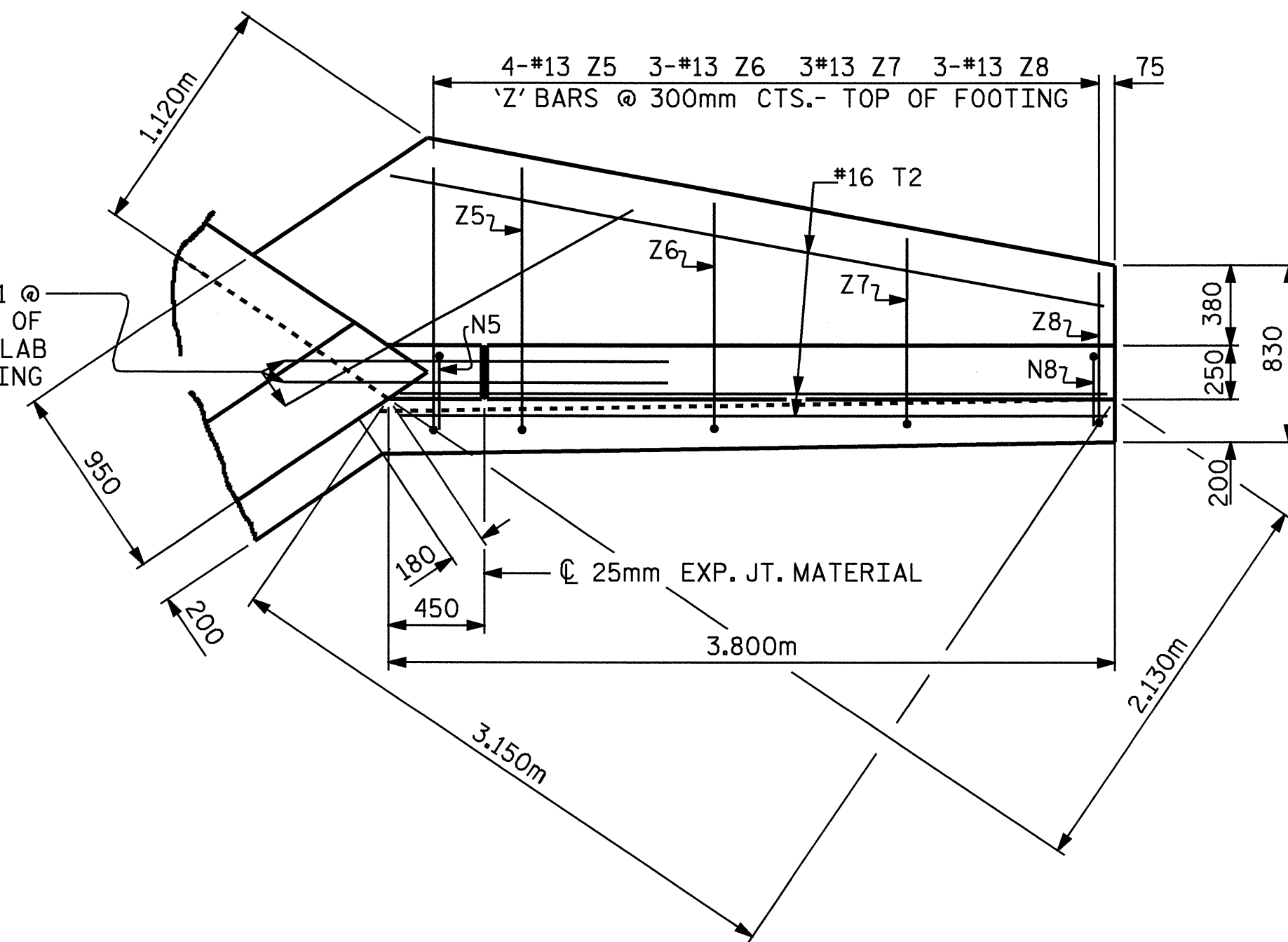
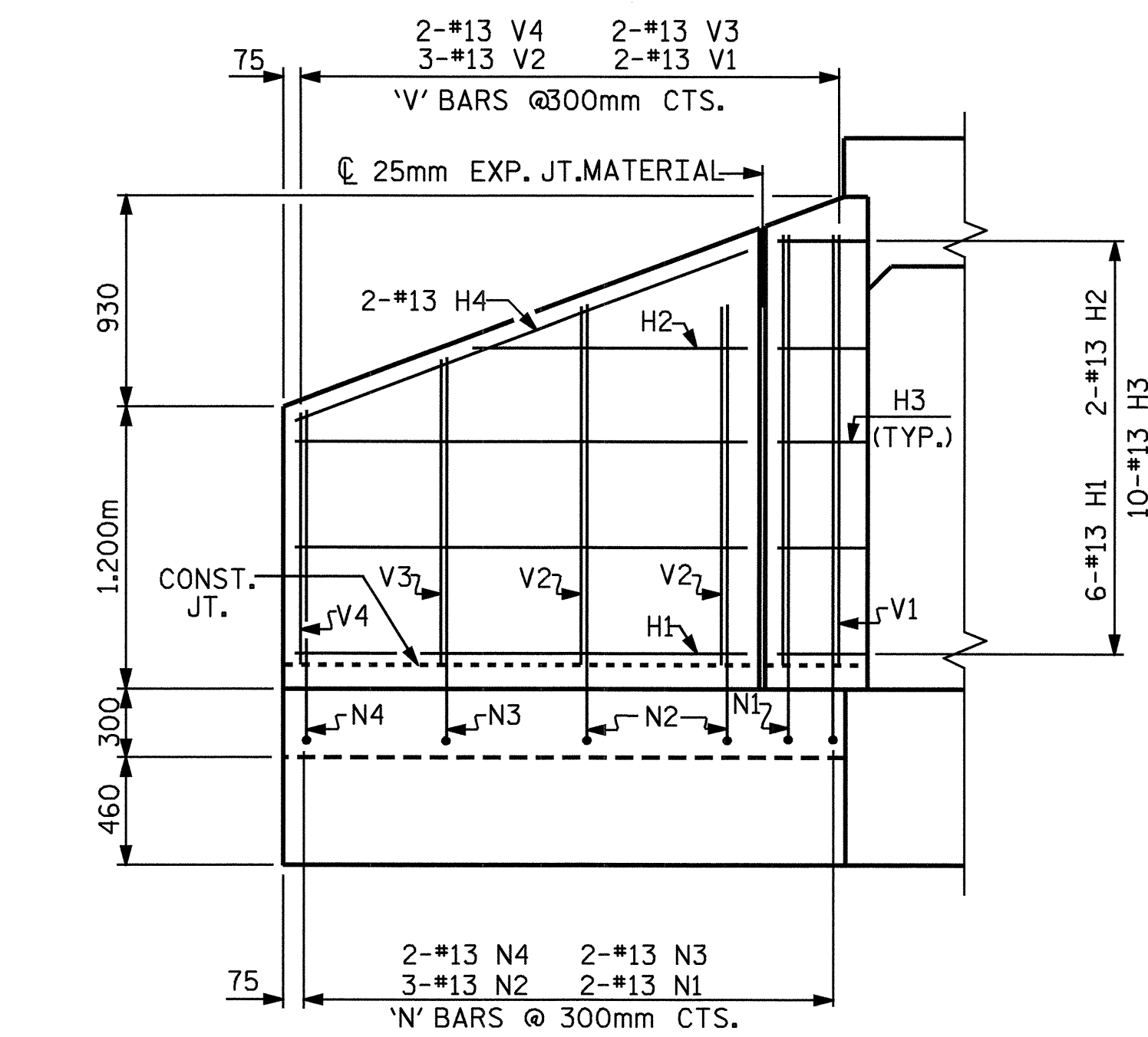


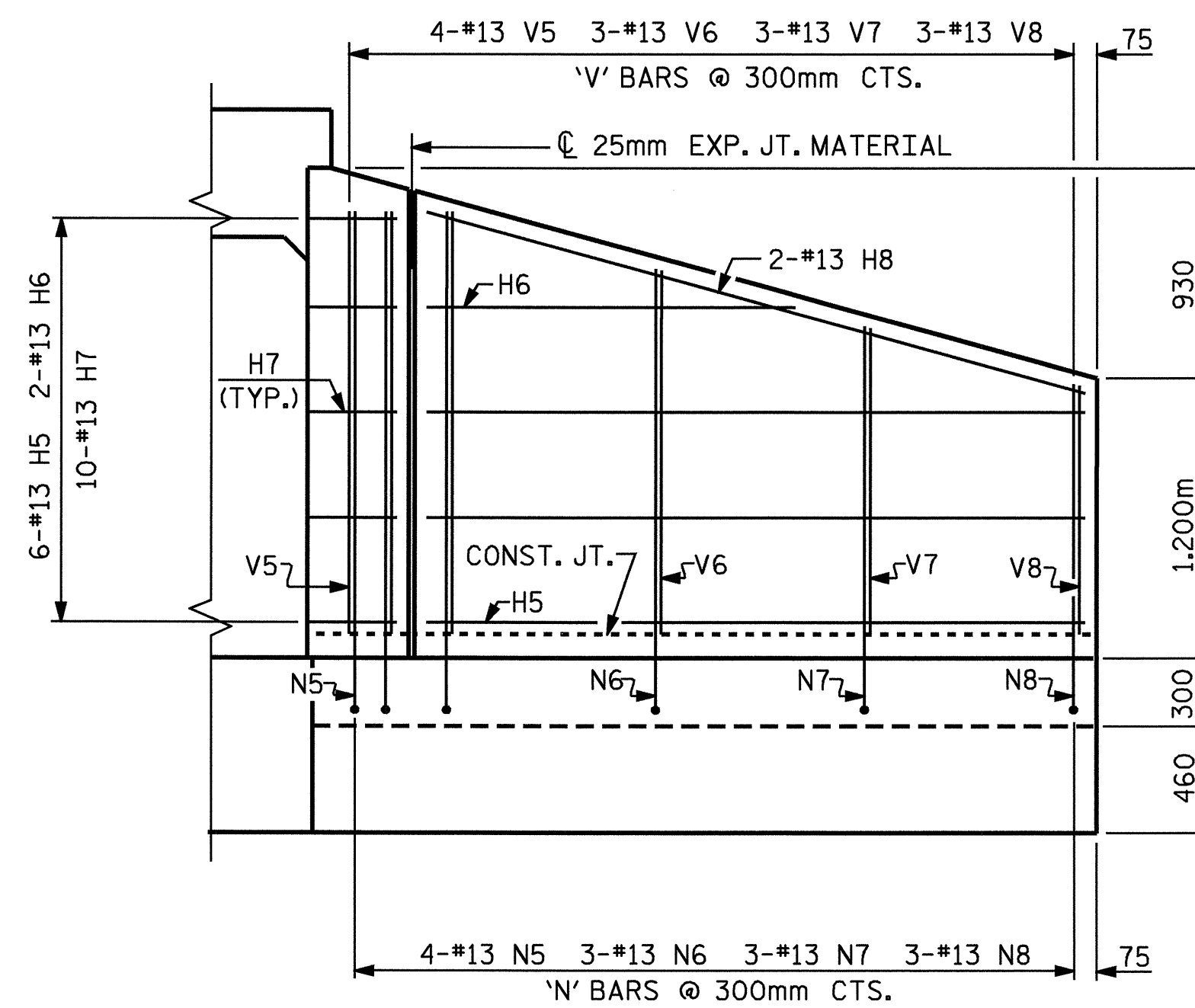
PLAN W2



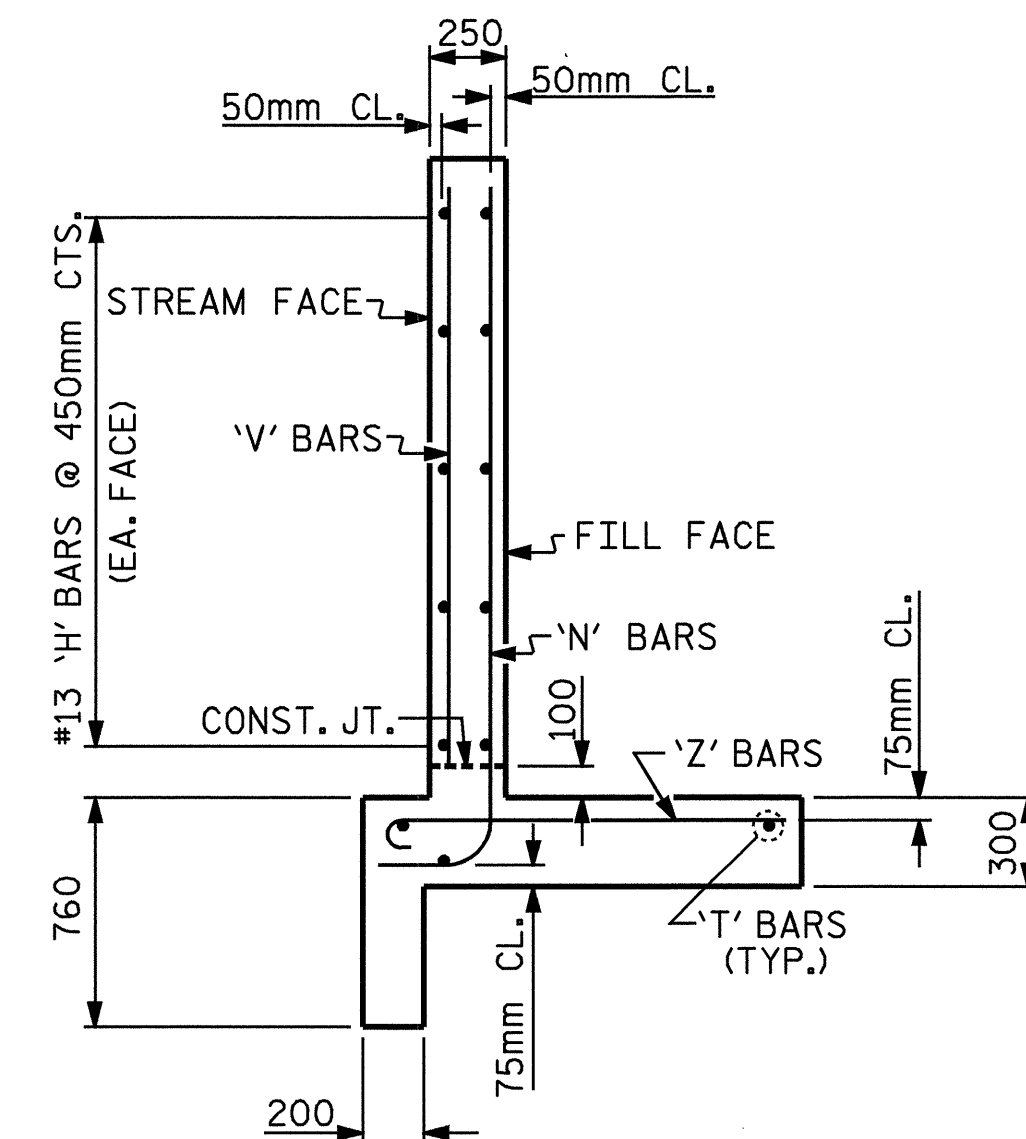
PLAN W1



ELEVATION W2

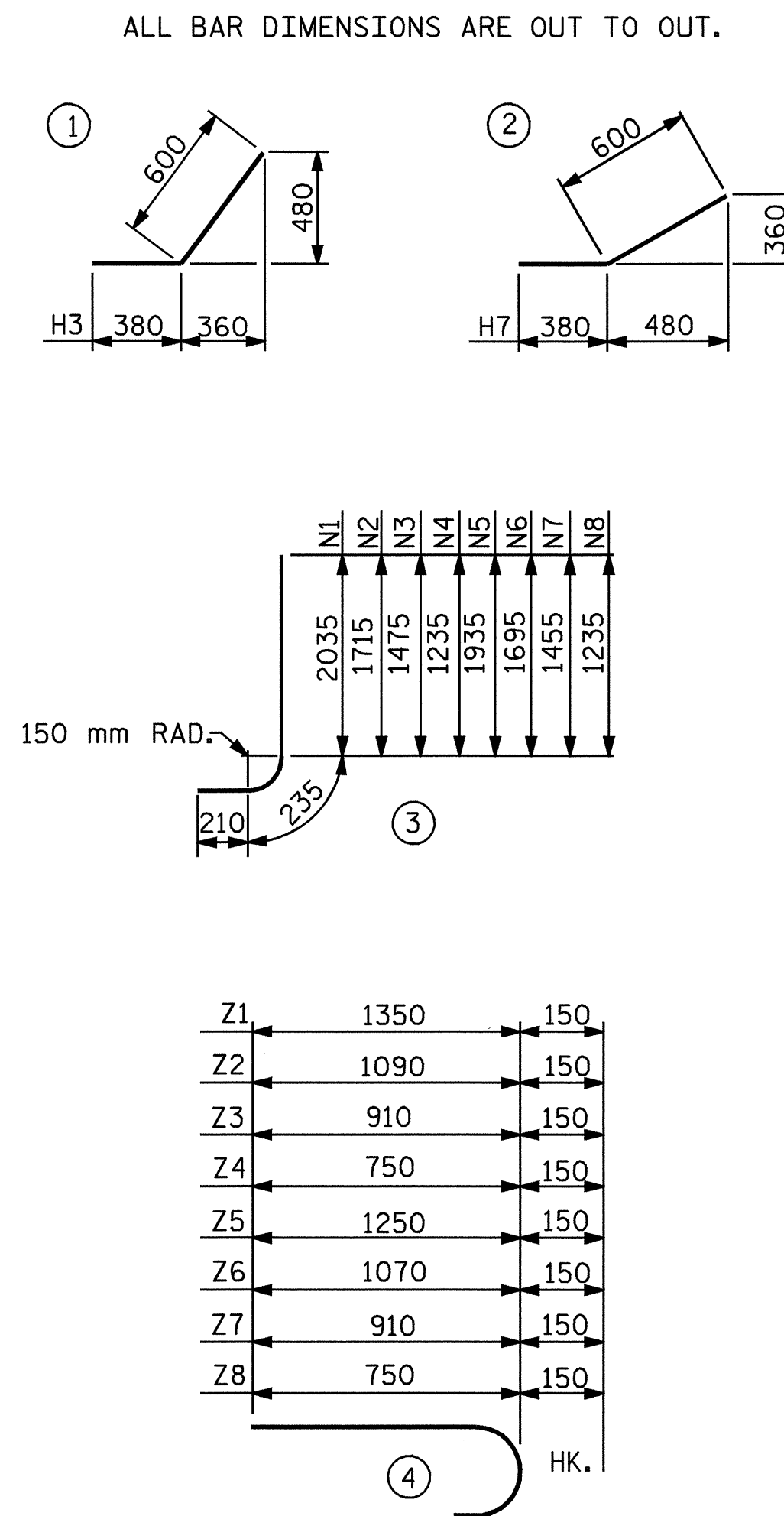


ELEVATION W1



TYPICAL WING SECTION

BAR TYPES



BILL OF MATERIAL

BAR NO.	SIZE	TYPE	LENGTH	WEIGHT	
H1	12	13	STR	1920	23
H2	4	13	STR	1060	4
H3	20	13	STR	980	19
H4	4	13	STR	2080	8
H5	12	13	STR	3220	38
H6	4	13	STR	1920	8
H7	20	13	STR	980	19
H8	4	13	STR	3340	13
N1	4	13	STR	2480	10
N2	6	13	STR	2160	13
N3	4	13	STR	1920	8
N4	4	13	STR	1680	7
N5	8	13	STR	2380	19
N6	3	13	STR	2140	6
N7	6	13	STR	1900	11
N8	6	13	STR	1680	10
S1	12	19	STR	1800	48
T1	6	16	STR	2500	23
T2	6	16	STR	3800	35
V1	4	13	STR	1880	7
V2	6	13	STR	1540	9
V3	4	13	STR	1300	5
V4	4	13	STR	1060	4
V5	8	13	STR	1760	14
V6	3	13	STR	1520	5
V7	6	13	STR	1300	8
V8	6	13	STR	1060	6
Z1	4	13	STR	1500	6
Z2	6	13	STR	1240	7
Z3	4	13	STR	1060	4
Z4	4	13	STR	900	4
Z5	8	13	STR	1400	11
Z6	6	13	STR	1220	7
Z7	6	13	STR	1060	6
Z8	6	13	STR	900	5

REINFORCING STEEL FOR 4 WINGS 430 kg

CLASS A CONCRETE

4 WINGS 10.2 m³

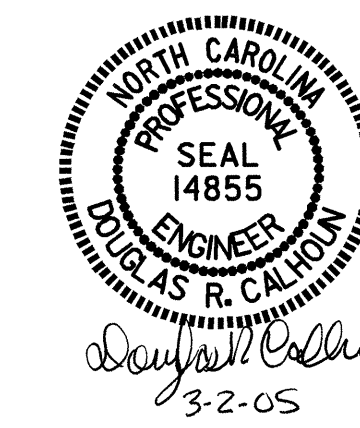
2 HEADWALLS 1.5 m³

2 END CURTAIN WALLS 1.6 m³

TOTAL 13.3 m³

ASSEMBLED BY : A. K. PATEL/TLC DATE : 11-10-03
 CHECKED BY : T. A. HARRIS DATE : 12-4-03
 DRAWN BY : KJA 6/97
 CHECKED BY : VAP 12/97

FOR WING ORIENTATION, SEE BARREL STANDARD SHEET.



PROJECT NO. R-2552C
 JOHNSTON COUNTY
 STATION: 134+01.500 -L2-

SHEET 5 OF 5

STATE OF NORTH CAROLINA
 DEPARTMENT OF TRANSPORTATION
 RALEIGH
 WINGS FOR
 CONCRETE BOX CULVERT
 H = 1.800m SLOPE 2:1
 68° SKEW

REVISIONS						SHEET NO.
NO.	BY:	DATE:	NO.	BY:	DATE:	C-21
1			3			TOTAL SHEETS
2			4			42