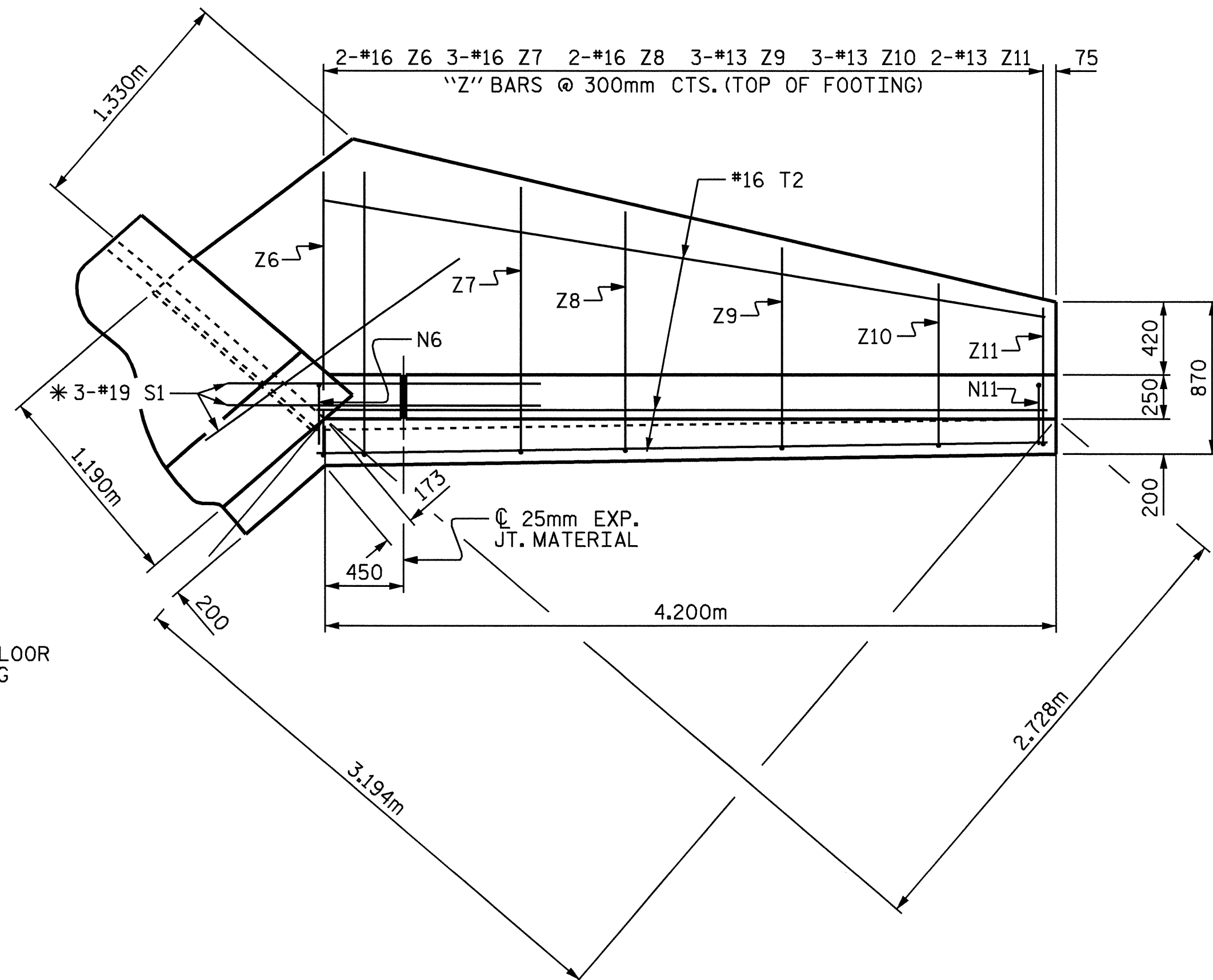
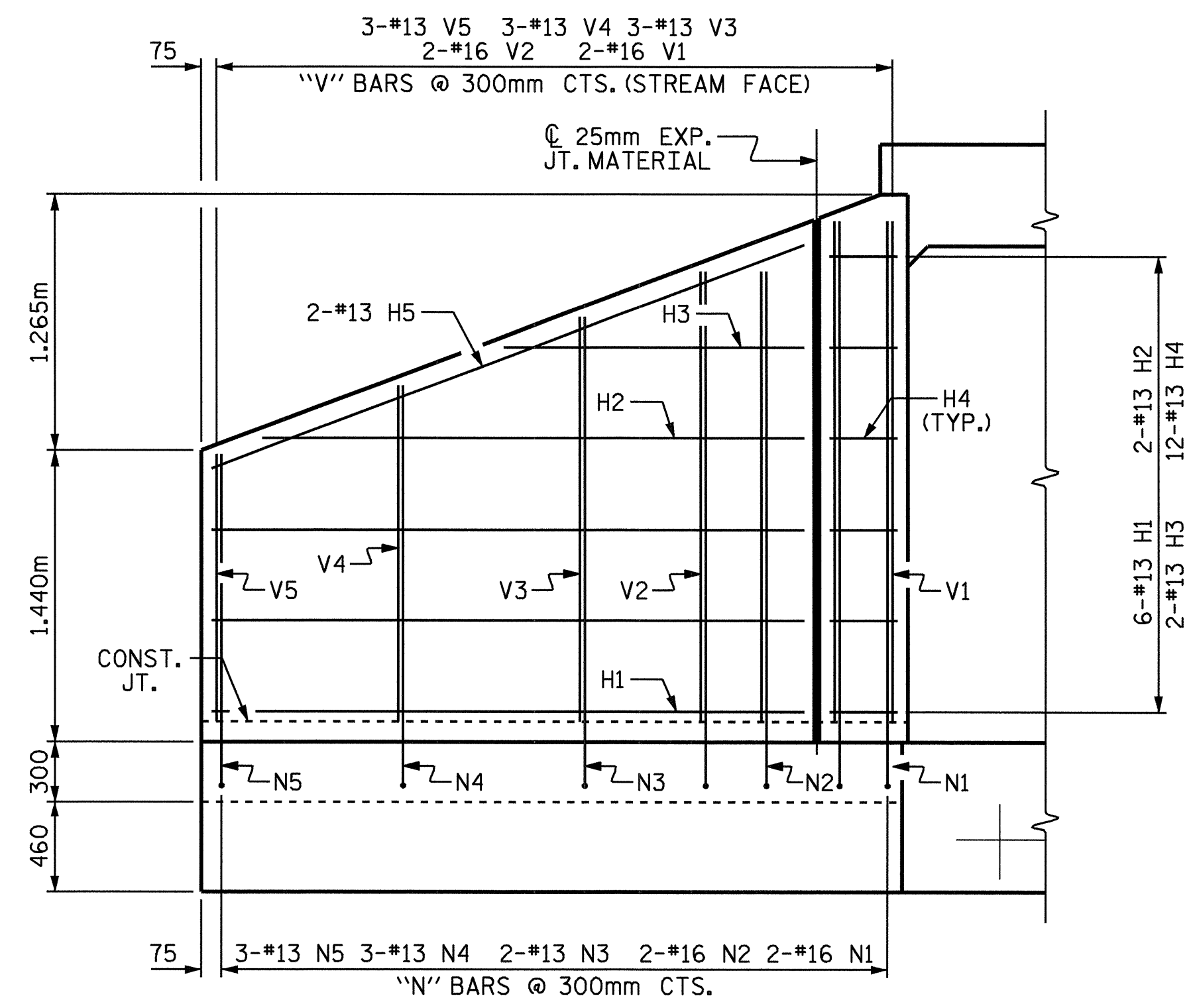


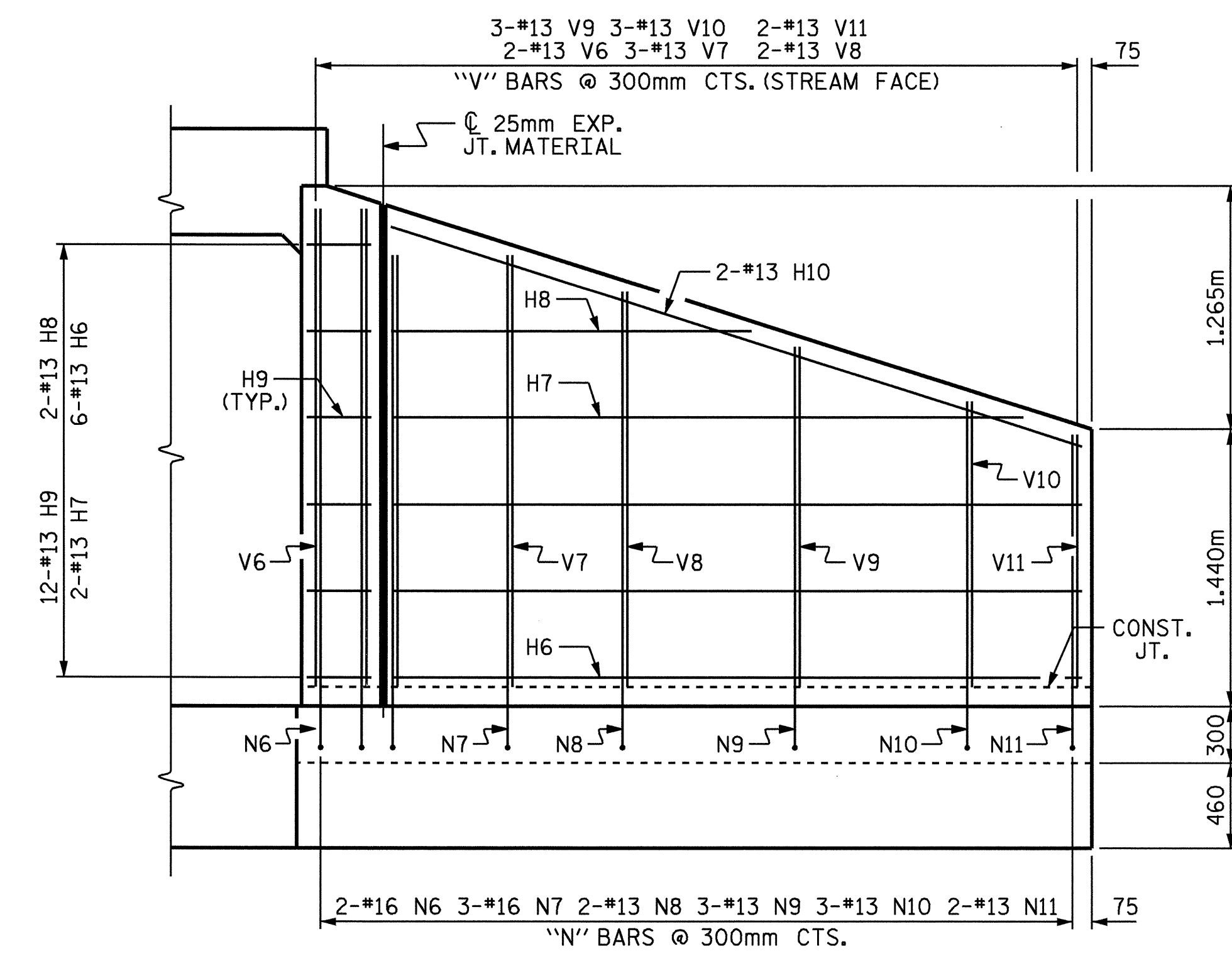
PLAN W2



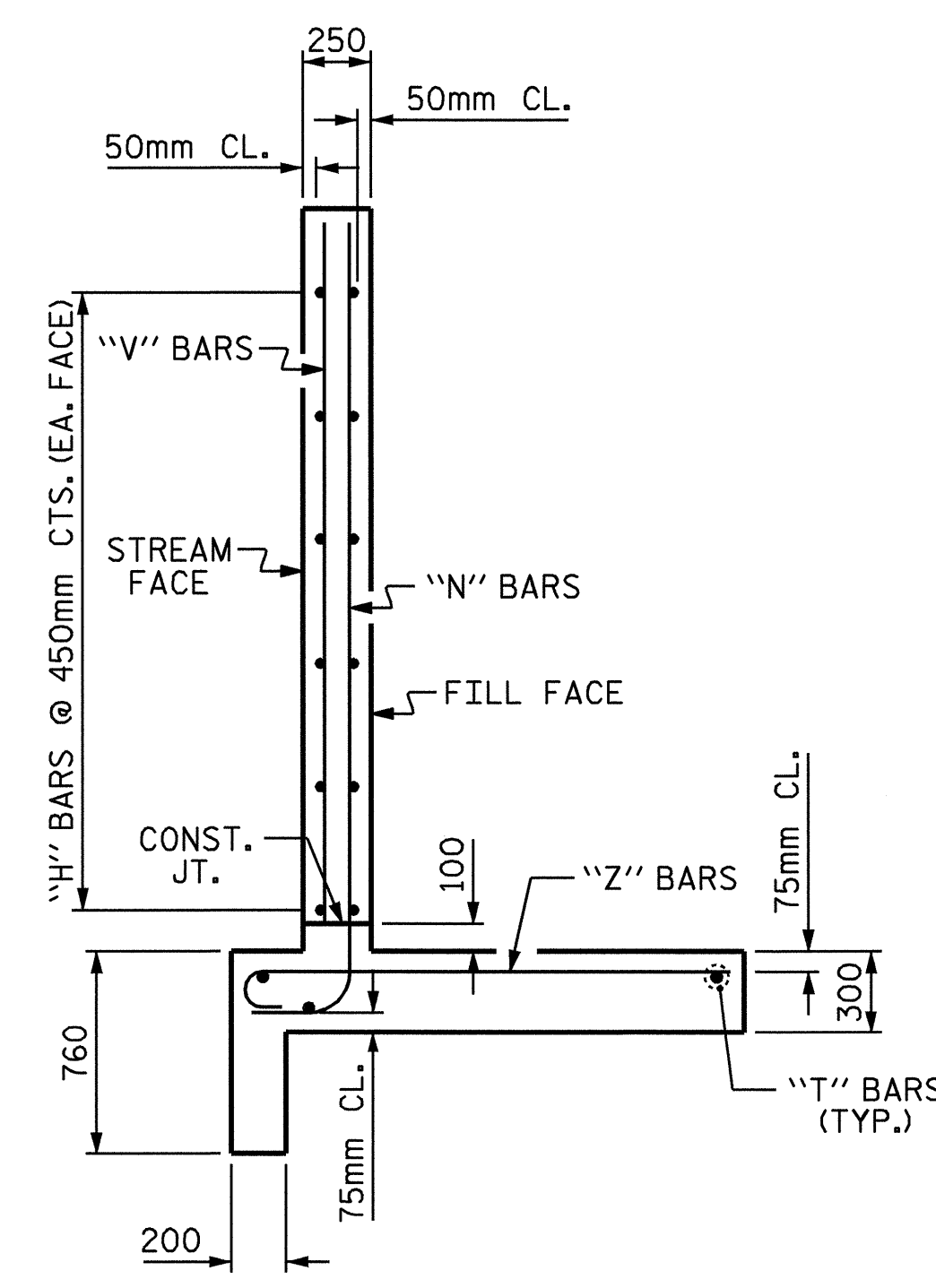
PLAN W1



ELEVATION W2



ELEVATION W1



TYPICAL WING SECTION

BAR TYPES

ALL BAR DIMENSIONS ARE OUT TO OUT.

BAR NO.	SIZE	TYPE	LENGTH	WEIGHT	
H1	12	13	STR	2920	35
H2	4	13	STR	2680	11
H3	4	13	STR	1480	6
H4	24	13	1	980	23
H5	4	13	STR	3140	12
H6	12	13	STR	3600	43
H7	4	13	STR	3300	13
H8	4	13	STR	1880	9
H9	24	13	2	980	23
H10	4	13	STR	3780	15
N1	4	16	3	3080	19
N2	4	16	3	2840	18
N3	4	13	3	2620	11
N4	6	13	3	2280	14
N5	6	13	3	1940	12
N6	4	16	3	3100	19
N7	4	16	3	2860	27
N8	4	13	3	2660	11
N9	6	13	3	2380	14
N10	6	13	3	2100	13
N11	4	13	3	1920	8
S1	12	19	STR	1800	49
T1	6	16	STR	3400	32
T2	6	16	STR	4400	41
V1	4	13	STR	2460	10
V2	4	13	STR	2240	9
V3	4	13	STR	2040	8
V4	6	13	STR	1700	10
V5	6	13	STR	1380	8
V6	4	13	STR	2480	10
V7	6	13	STR	2300	14
V8	4	13	STR	2140	9
V9	6	13	STR	1880	11
V10	6	13	STR	1620	10
V11	4	13	STR	1380	5
Z1	4	16	4	1560	10
Z2	4	16	4	1480	9
Z3	4	13	4	1320	5
Z4	6	13	4	1120	7
Z5	6	13	4	920	5
Z6	4	16	4	1800	11
Z7	6	16	4	1700	16
Z8	4	16	4	1540	10
Z9	6	13	4	1300	8
Z10	6	13	4	1080	6
Z11	4	13	4	920	4

BILL OF MATERIAL

BAR NO.	SIZE	TYPE	LENGTH	WEIGHT	
H1	12	13	STR	2920	35
H2	4	13	STR	2680	11
H3	4	13	STR	1480	6
H4	24	13	1	980	23
H5	4	13	STR	3140	12
H6	12	13	STR	3600	43
H7	4	13	STR	3300	13
H8	4	13	STR	1880	9
H9	24	13	2	980	23
H10	4	13	STR	3780	15
N1	4	16	3	3080	19
N2	4	16	3	2840	18
N3	4	13	3	2620	11
N4	6	13	3	2280	14
N5	6	13	3	1940	12
N6	4	16	3	3100	19
N7	4	16	3	2860	27
N8	4	13	3	2660	11
N9	6	13	3	2380	14
N10	6	13	3	2100	13
N11	4	13	3	1920	8
S1	12	19	STR	1800	49
T1	6	16	STR	3400	32
T2	6	16	STR	4400	41
V1	4	13	STR	2460	10
V2	4	13	STR	2240	9
V3	4	13	STR	2040	8
V4	6	13	STR	1700	10
V5	6	13	STR	1380	8
V6	4	13	STR	2480	10
V7	6	13	STR	2300	14
V8	4	13	STR	2140	9
V9	6	13	STR	1880	11
V10	6	13	STR	1620	10
V11	4	13	STR	1380	5
Z1	4	16	4	1560	10
Z2	4	16	4	1480	9
Z3	4	13	4	1320	5
Z4	6	13	4	1120	7
Z5	6	13	4	920	5
Z6	4	16	4	1800	11
Z7	6	16	4	1700	16
Z8	4	16	4	1540	10
Z9	6	13	4	1300	8
Z10	6	13	4	1080	6
Z11	4	13	4	920	4

REINFORCING STEEL FOR 4 WINGS 669

CLASS A CONCRETE

4 WINGS	16.0	m ³
2 HEADWALLS	0.9	m ³
2 END CURTAIN WALLS	1.0	m ³
TOTAL	17.9	m³



PROJECT NO. R-2552C
 JOHNSTON COUNTY
 STATION: 134+31.00 -L2-

SHEET 4 OF 4

STATE OF NORTH CAROLINA
 DEPARTMENT OF TRANSPORTATION
 RALEIGH

WINGS FOR
 CONCRETE BOX CULVERT
 H = 2.400m SLOPE = 2:1
 81° SKEW

REVISIONS						SHEET NO.
NO.	BY:	DATE:	NO.	BY:	DATE:	C-25
1			3			TOTAL SHEETS
2			4			42

DRAWN BY: T.L.CLELLAND DATE: 2/2/05
 CHECKED BY: T.A.HARRIS DATE: 2/9/05

02-MAR-2005 12:02
 W:\squad\2552c\TCLLELL\MICROS\2552c\R-A7A6.dgn
 tclelland

STR. #10