

NOTES

FOR POT BEARINGS, SEE SPECIAL PROVISIONS.

AT ALL POINTS OF SUPPORT IN SPANS A & B, NUTS FOR ANCHOR BOLTS SHALL BE TIGHTENED FINGER TIGHT AND GIVEN AN ADDITIONAL 1/2 TURN. THE THREAD OF THE NUT AND BOLT SHALL THEN BE BURRED WITH A SHARP POINTED TOOL.

WHEN WELDING THE SOLE PLATE TO THE GIRDER, USE TEMPERATURE INDICATING WAX PENS, OR OTHER SUITABLE MEANS, TO ENSURE THAT THE TEMPERATURE OF THE BEARING DOES NOT EXCEED 121°C. TEMPERATURES ABOVE THIS MAY DAMAGE THE TFE OR ELASTOMER.

AFTER BEARING ASSEMBLY IS IN PLACE AND ANCHOR BOLTS HAVE BEEN FINALLY POSITIONED, THEY SHALL BE GROUTED IN PLACE AS SHOWN.

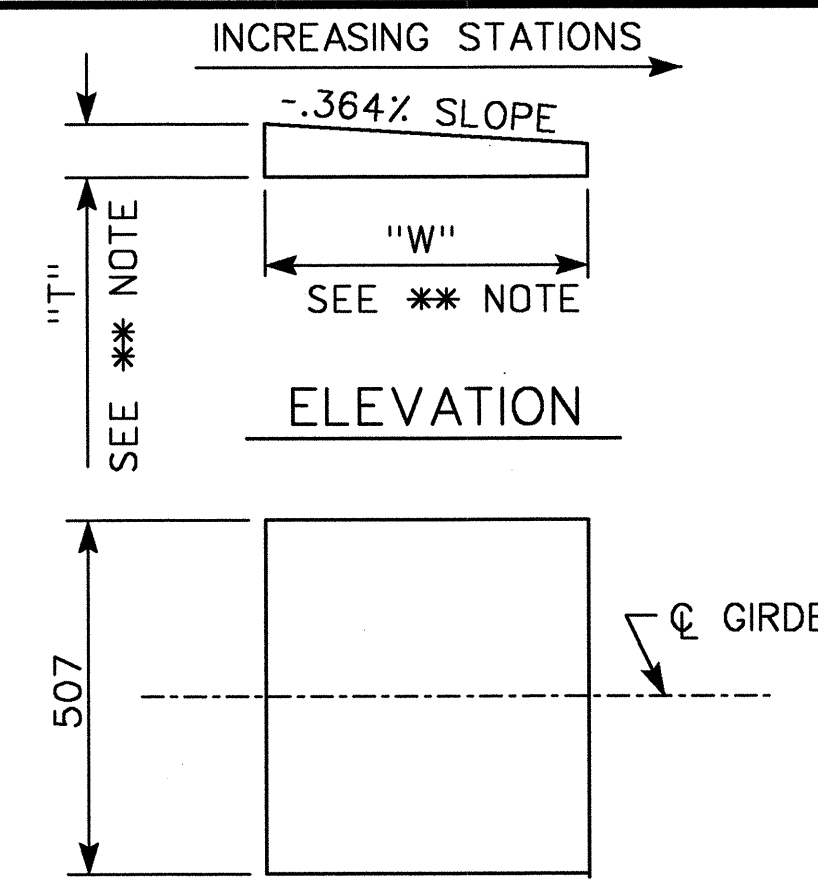
THE CLOSURE PLATE, GROUT PIPE AND STANDARD PIPE FOR THIS ASSEMBLY NEED NOT BE GALVANIZED.

SOLE PLATES SHOULD BE WELDED TO BEAM FLANGES AND ANCHOR BOLTS SHOULD BE GROUTED BEFORE FALSEWORK IS PLACED.

ALL SURFACES OF BEARING PLATES SHALL BE SMOOTH AND STRAIGHT.

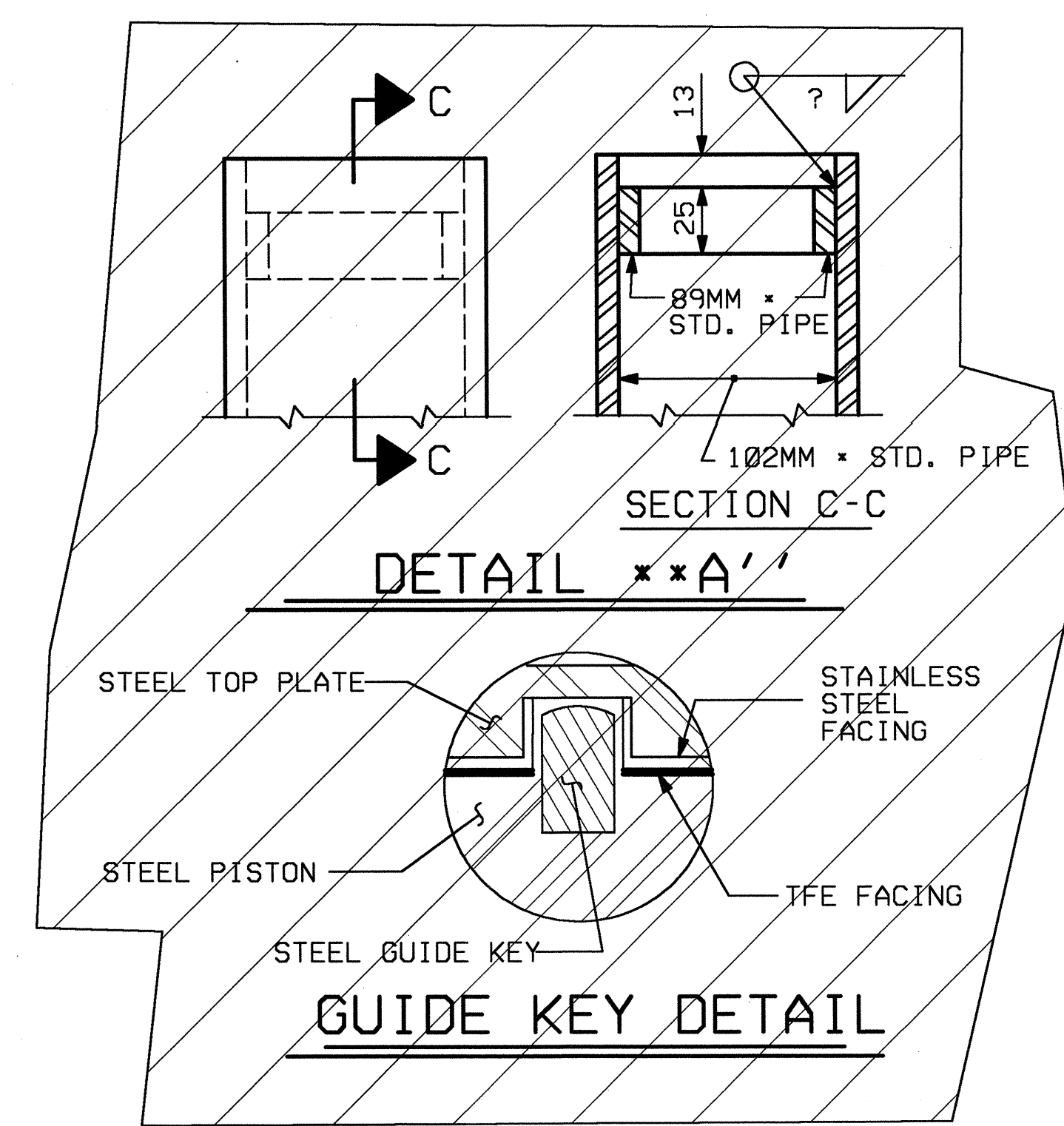
FOR THERMAL SPRAYED COATINGS (METALLIZATION), SEE SPECIAL PROVISIONS.

THE CONTRACTOR MAY SUBSTITUTE DISC BEARINGS FOR THE POT BEARINGS SHOWN. FOR OPTIONAL DISC BEARINGS, SEE SPECIAL PROVISIONS.

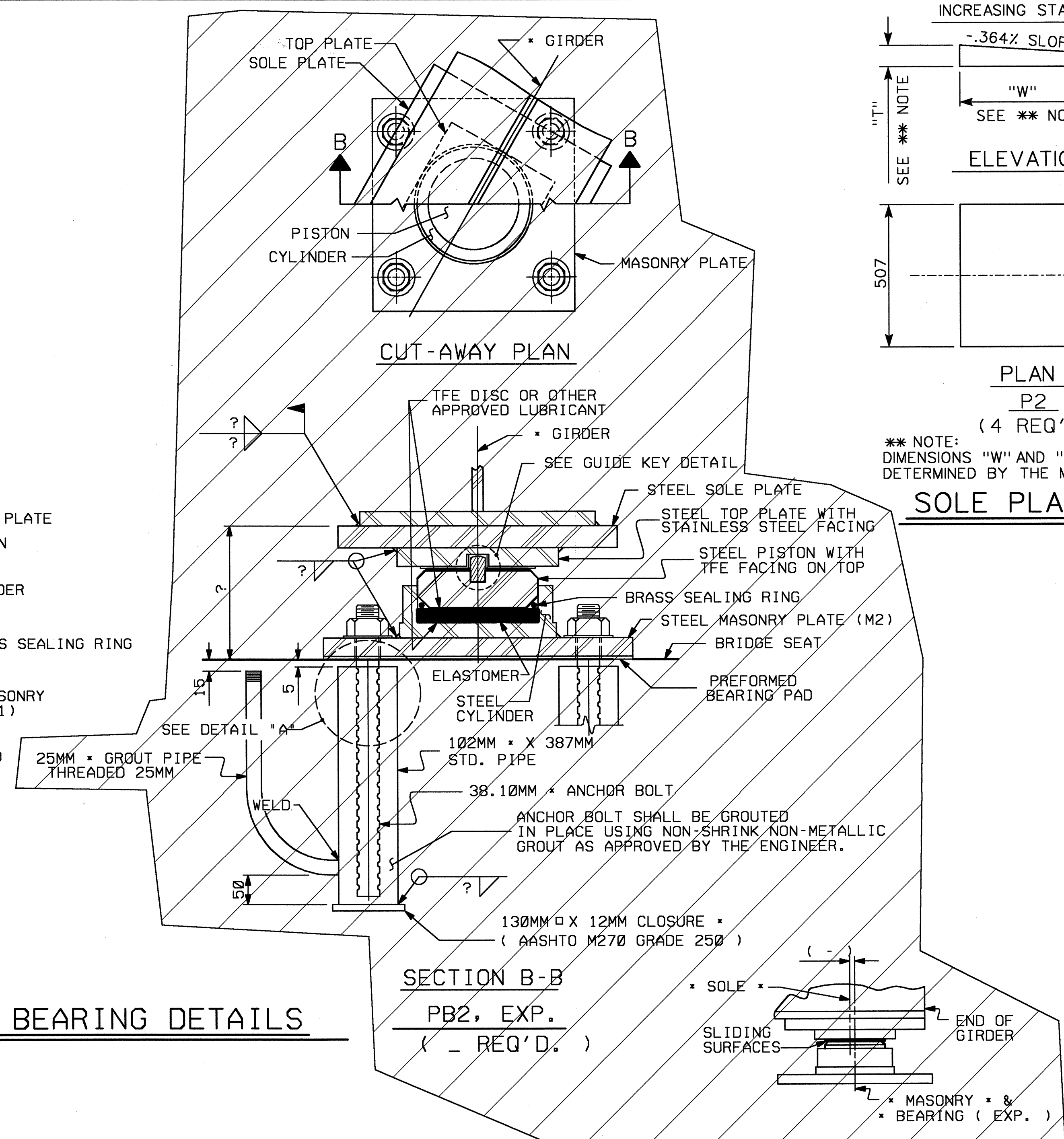


INCREASING STATIONS  
 .364% SLOPE  
 "W"  
 SEE \*\* NOTE  
 ELEVATION  
 507  
 CL GIRDER  
 PLAN  
 P2  
 (4 REQ'D)  
 \*\* NOTE:  
 DIMENSIONS "W" AND "T" ARE TO BE DETERMINED BY THE MANUFACTURER.

SOLE PLATE DETAIL



SECTION C-C  
 13  
 10  
 89MM STD. PIPE  
 102MM STD. PIPE  
 SECTION A-A  
 DETAIL A-A  
 STEEL TOP PLATE  
 STEEL PISTON  
 STEEL GUIDE KEY  
 STAINLESS STEEL FACING  
 TFE FACING



SECTION B-B  
 PB2, EXP.  
 (- REQ'D.)  
 ANCHOR BOLT SHALL BE GROUTED IN PLACE USING NON-SHRINK NON-METALLIC GROUT AS APPROVED BY THE ENGINEER.  
 130MM X 12MM CLOSURE (AASHTO M270 GRADE 250)  
 SOLE  
 SLIDING SURFACES  
 END OF GIRDER  
 MASONRY & BEARING (EXP.)

POT BEARING DETAILS

TABLE FOR LOADS AND MOVEMENTS

BEARING	LOCATION	VERTICAL LOAD (kN)			LATERAL LOAD (kN)	TOTAL MOVEMENT (mm)
		DEAD	LIVE	TOTAL		
PB1 (FIXED)	BENT 1	1362.98	449.20	1812.18	273.00	---

CUT-AWAY PLAN

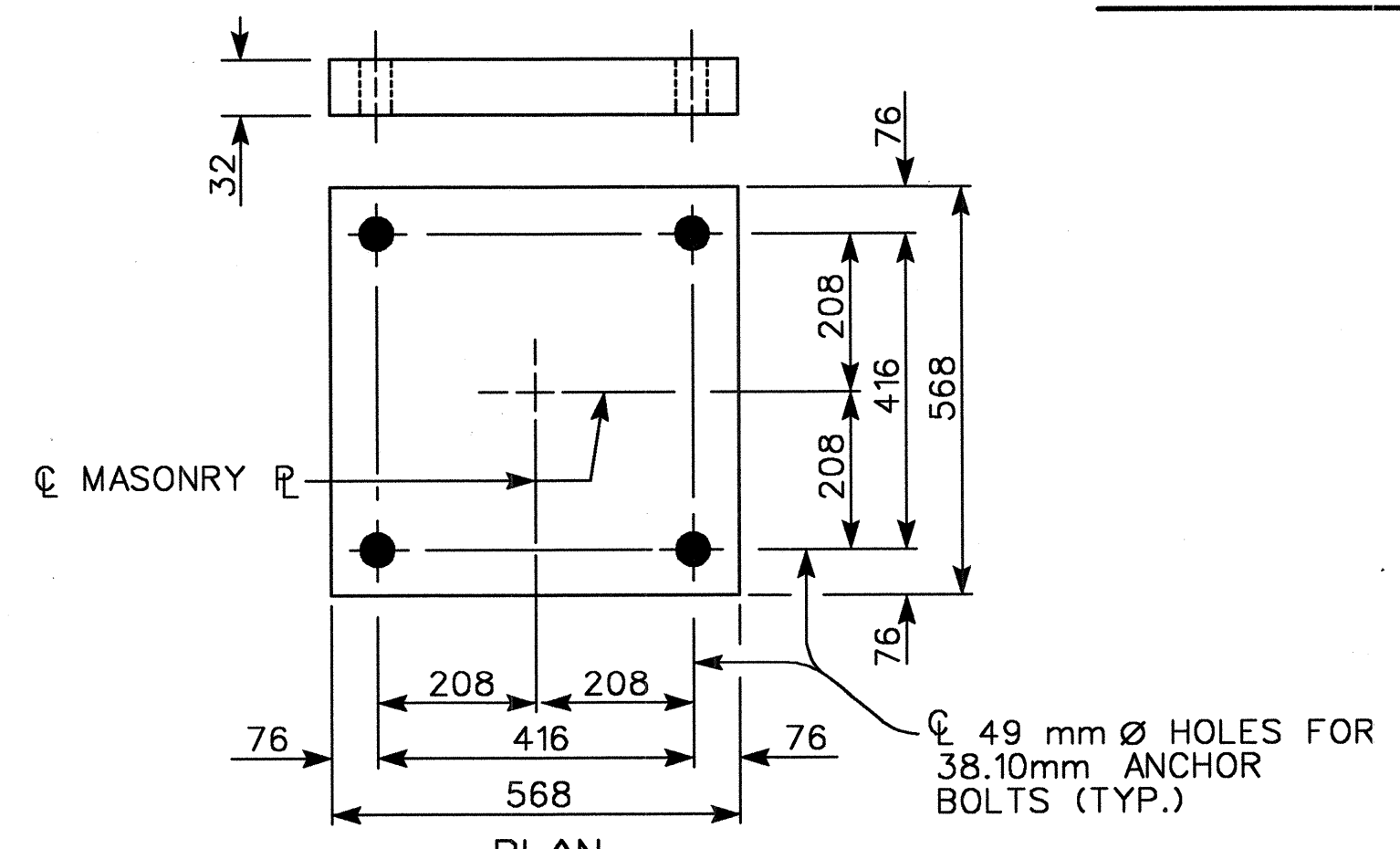
CUT-AWAY PLAN

SECTION A-A  
 PB1, FIXED  
 (4 REQ'D.)

POT BEARING DETAILS

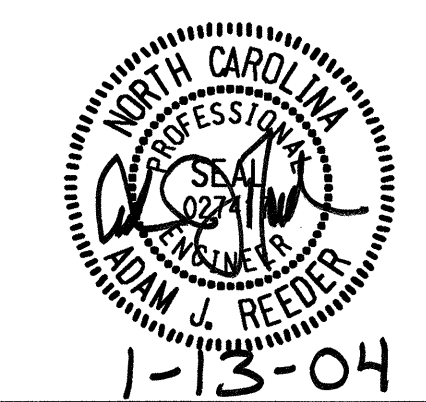
PLAN  
 M1 (4 REQUIRED)

MASONRY PLATE DETAIL



PROJECT NO. R-2552B  
 JOHNSTON COUNTY  
 STATION: 65+51.880 -L-  
 14+25.318 -Y7-

THIS STANDARD DRAWING REVIEWED AND ADAPTED FOR USE AT THE REFERENCED LOCATION BY THE UNDERSIGNED.



STATE OF NORTH CAROLINA  
 DEPARTMENT OF TRANSPORTATION  
 RALEIGH  
 STANDARD  
 POT BEARING  
 DETAILS

REVISIONS					SHEET NO.
NO.	BY	DATE	NO.	DATE	TOTAL SHEETS
1			3		43
2			4		

ASSEMBLED BY: SD	DATE: 8/03
CHECKED BY: JL	DATE: 9/03
DRAWN BY: RWM 8/99	REV. 10/17/00 RWM/LES
CHECKED BY: LES 8/99	REV. 7/10/01 LES/RWM
	REV. 5/7/03 RWM/JTE