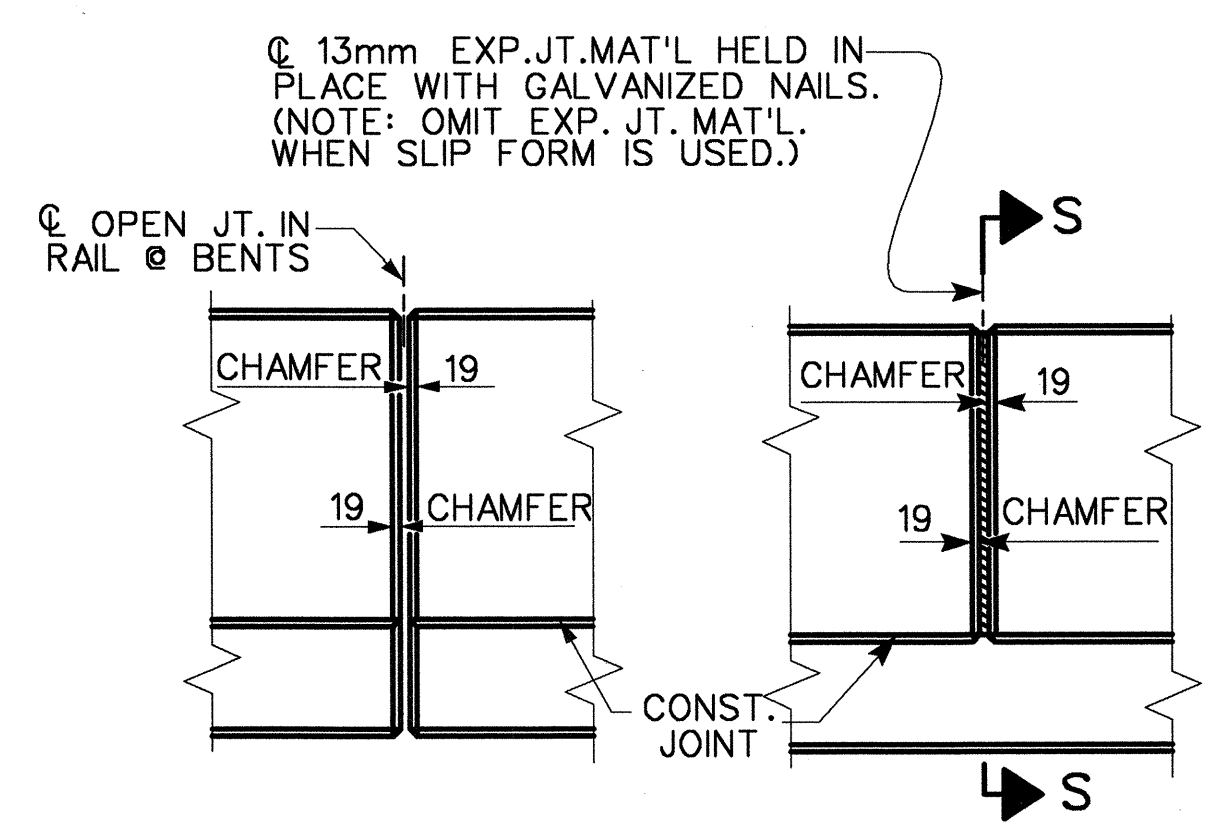


**PLAN**

NOTE: DISTANCES ARE MEASURED ALONG OUTSIDE FACE OF BARRIER RAIL.



**ELEVATION AT EXPANSION JOINTS BARRIER RAIL DETAILS**

**NOTES**

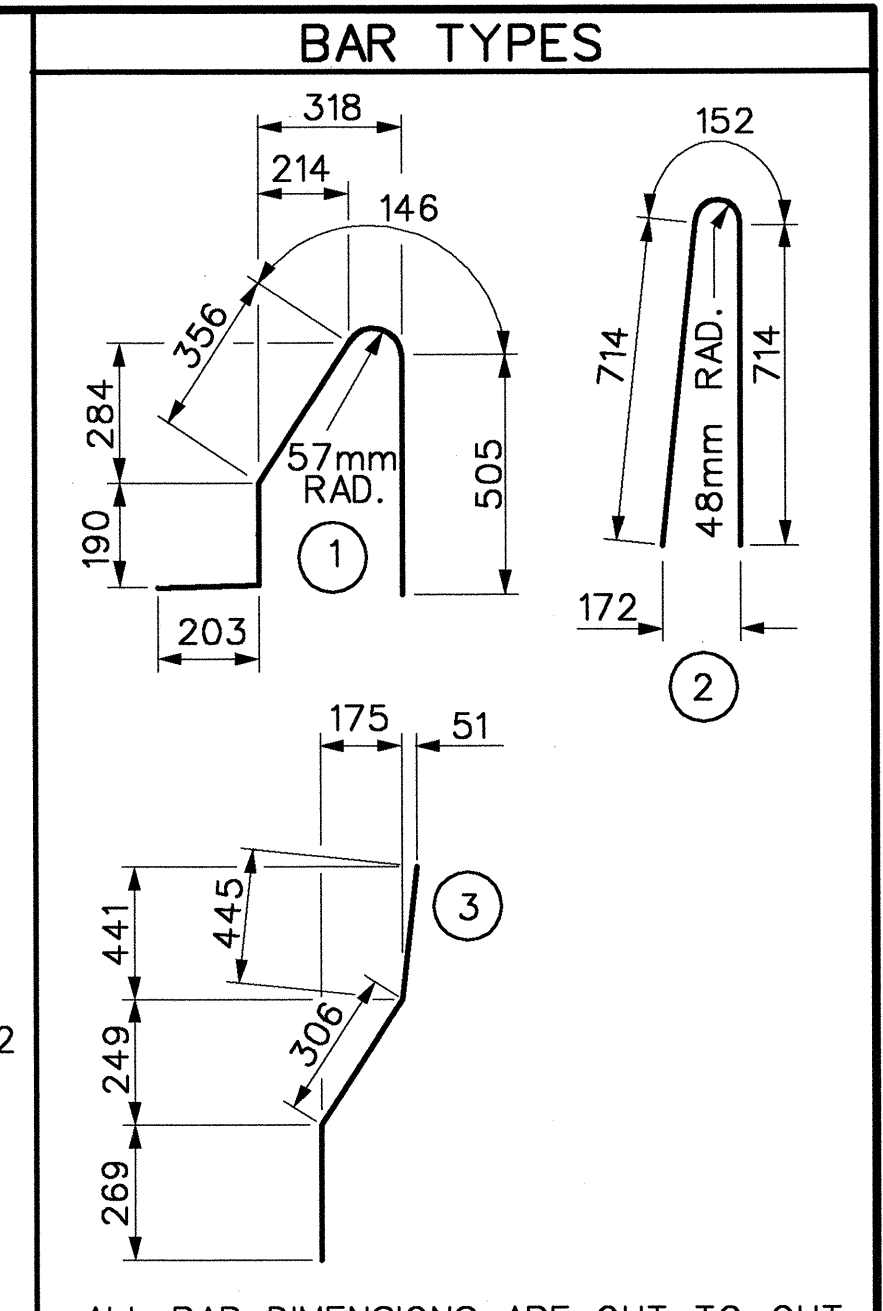
THE BARRIER RAIL IN EACH SPAN SHALL NOT BE CAST UNTIL ALL SLAB CONCRETE IN A CONTINUOUS SPAN HAS BEEN CAST AND HAS REACHED A MINIMUM COMPRESSIVE STRENGTH OF 20.7 MPa.

WHEN COMPRESSION JOINT SEAL OR EVAZOTE JOINT SEAL IS REQUIRED, THE JOINT IN THE DECK SHALL BE SAWED PRIOR TO THE CASTING OF BARRIER RAIL.

ALL REINFORCING STEEL IN BARRIER RAILS SHALL BE EPOXY COATED.

THE #16 S1 AND S2 BARS MAY BE SHIFTED SLIGHTLY AS NECESSARY TO MAINTAIN 50mm CLEAR TO 13mm JOINT.

VERTICAL GROOVED CONTRACTION JOINTS, 12mm IN DEPTH, SHALL BE TOOLED IN ALL EXPOSED FACES OF THE BARRIER RAIL AND IN ACCORDANCE WITH ARTICLE 825-10(B) OF THE STANDARD SPECIFICATIONS. THE CONTRACTION JOINT SHALL BE LOCATED AT EACH THIRD POINT BETWEEN BARRIER RAIL EXPANSION JOINTS. ONLY ONE CONTRACTION JOINT IS REQUIRED AT MIDPOINT OF BARRIER RAIL SEGMENTS LESS THAN 6.1m IN LENGTH AND NO CONTRACTION JOINTS ARE REQUIRED FOR THOSE SEGMENTS LESS THAN 3.5m IN LENGTH.

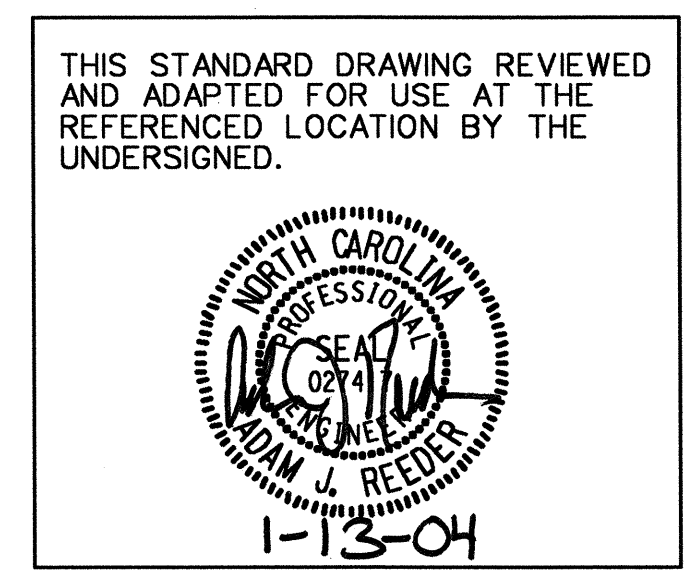


ALL BAR DIMENSIONS ARE OUT TO OUT

**BILL OF MATERIAL**

FOR CONCRETE BARRIER RAIL ONLY

BAR	NO.	SIZE	TYPE	LENGTH	WEIGHT
*S1	502	*16	1	1400	1091
*S2	502	*16	2	1580	1231
*S3	12	*16	3	1020	19
*S4	12	*16	STR	960	18
*B1	10	*16	STR	7420	115
*B2	8	*16	STR	7460	93
*B3	10	*16	STR	7540	117
*B4	31	*16	STR	7620	367
*B5	8	*16	STR	7680	95
*B6	10	*16	STR	7740	120
*B7	21	*16	STR	7500	244
*B8	21	*16	STR	7580	247
*B9	21	*16	STR	7640	249
*EPOXY COATED					
REINFORCING STEEL				4006	kg
CLASS AA CONCRETE				38.87	CU. METER
CONCRETE BARRIER RAIL				155.808	METERS

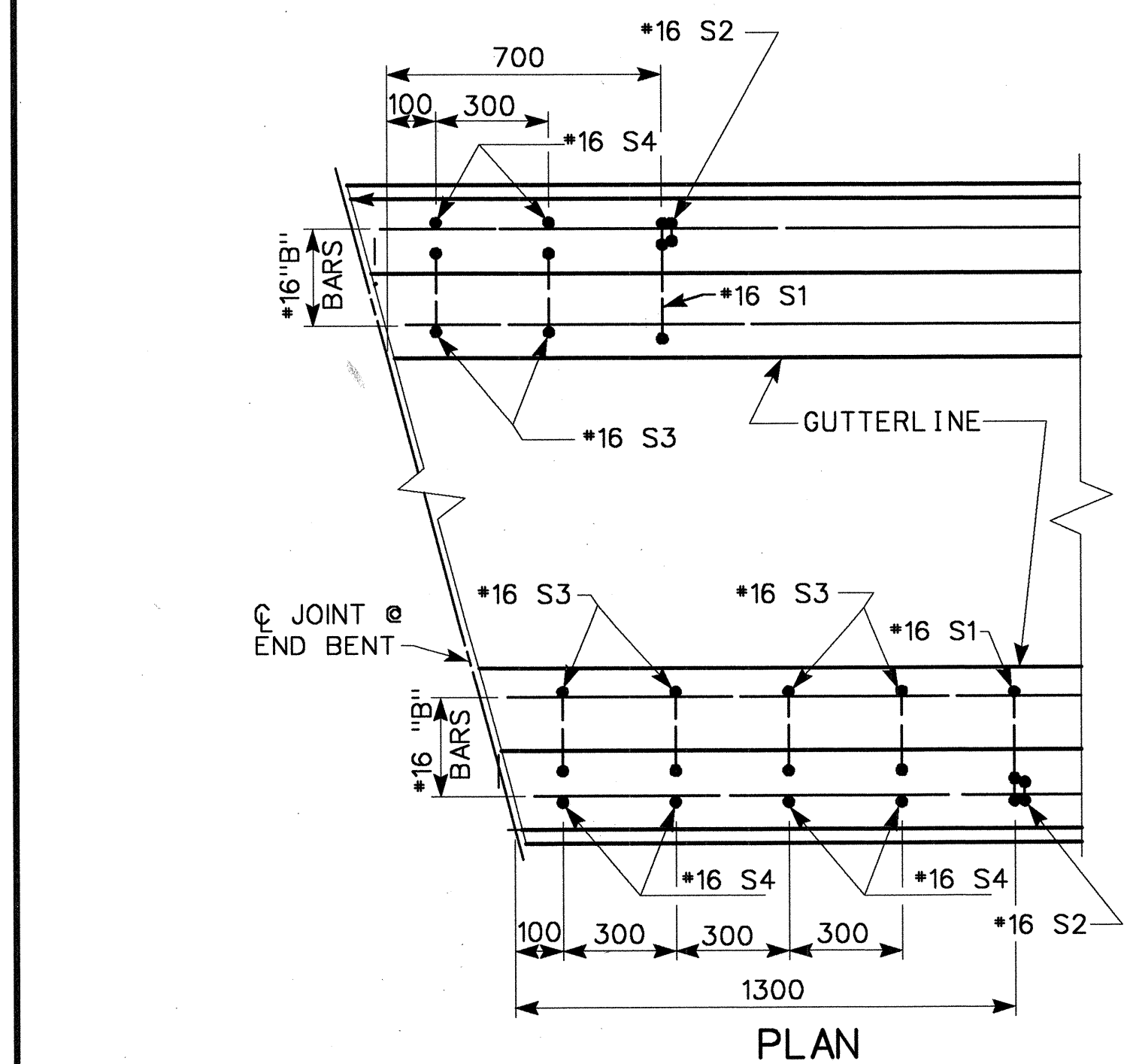


PROJECT NO. R-2552B  
JOHNSTON COUNTY  
 STATION: 65+51.880 -L-  
14+25.318 -Y7-

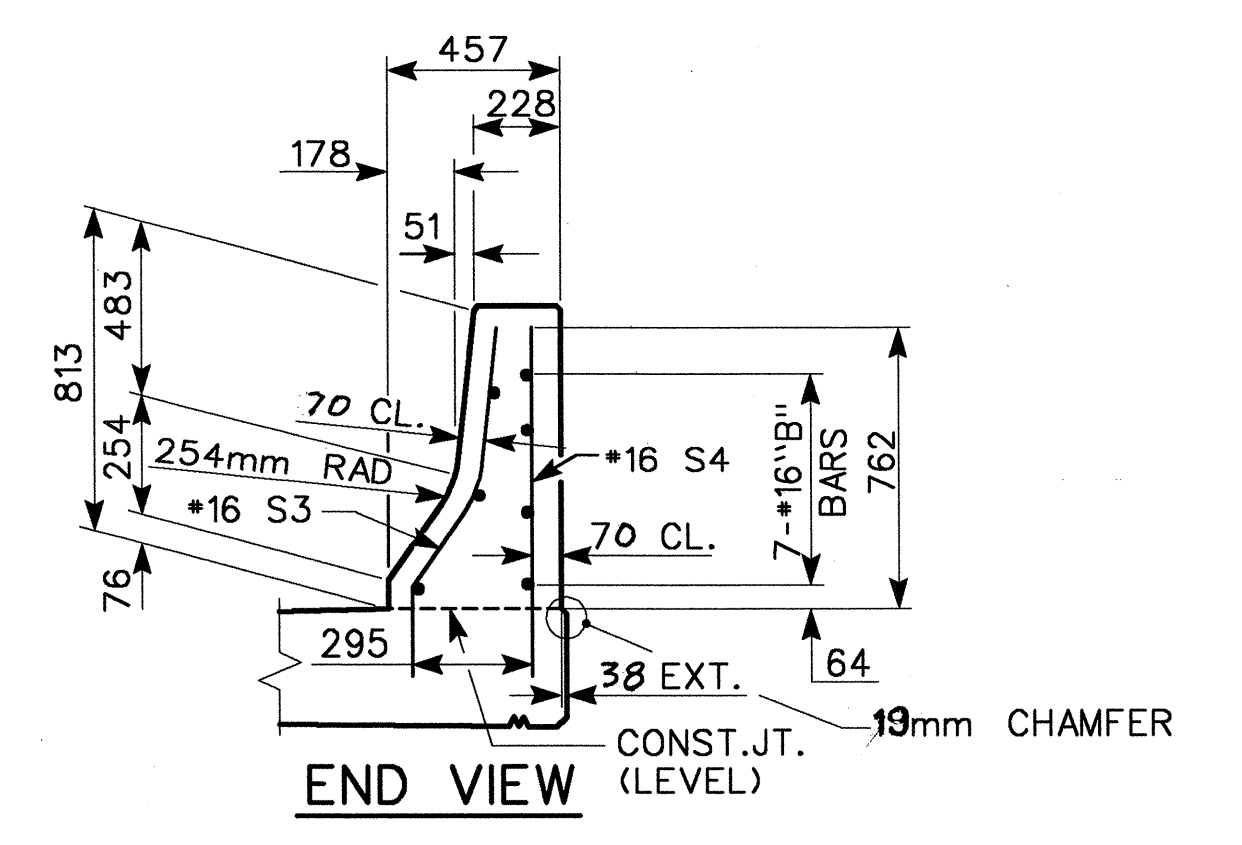
STATE OF NORTH CAROLINA  
 DEPARTMENT OF TRANSPORTATION  
 RALEIGH  
 STANDARD  
**CONCRETE BARRIER RAIL**

REVISIONS					SHEET NO.
NO.	BY:	DATE:	NO.	BY:	DATE:
1			3		
2			4		

TOTAL SHEETS: 4/31



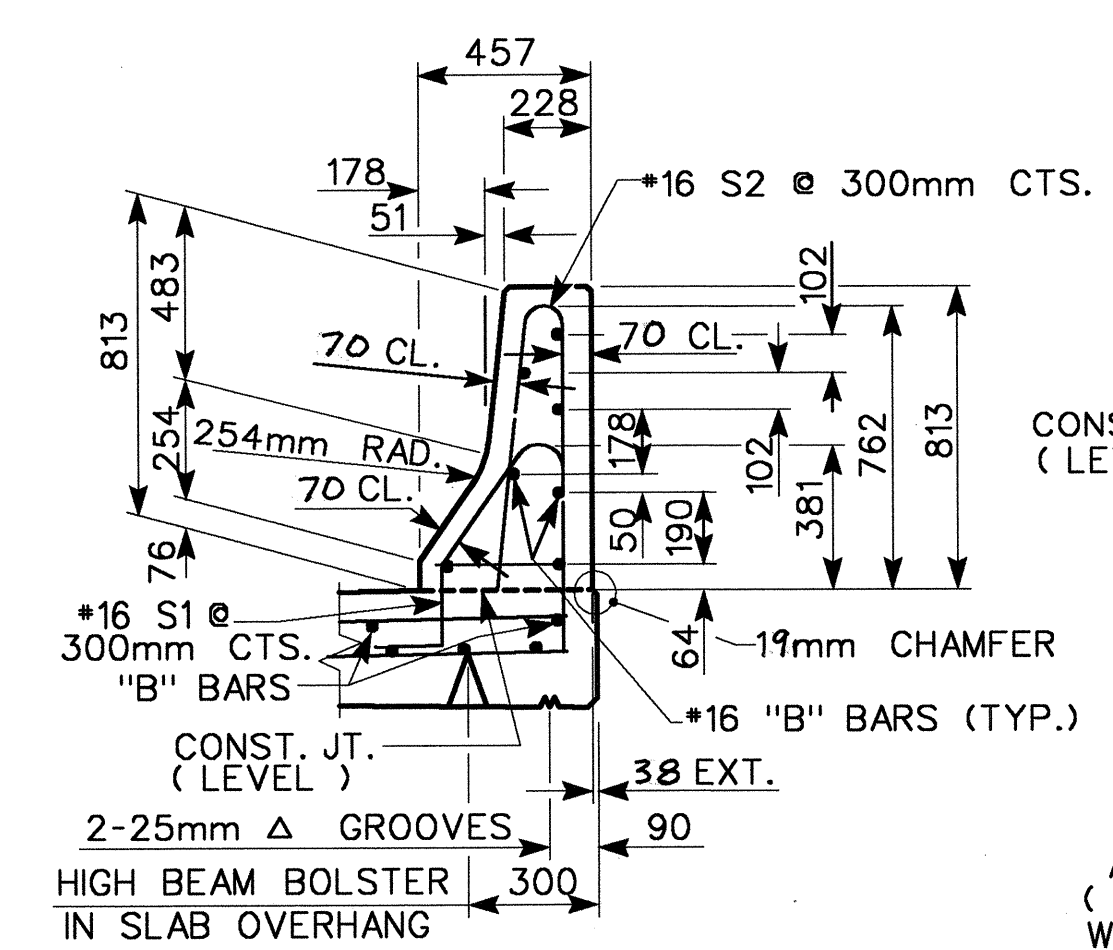
**PLAN**



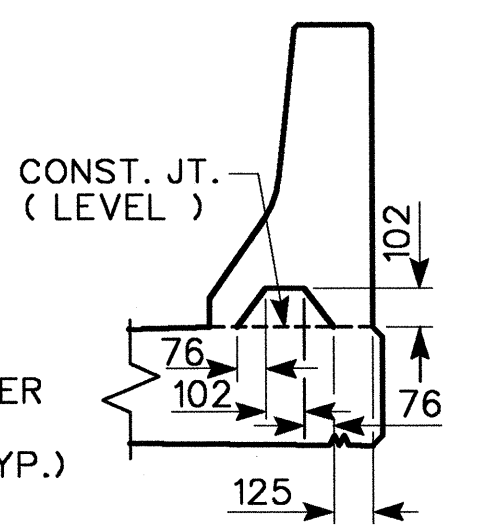
**END VIEW**

**END OF RAIL DETAILS**

FOR ADHESIVE ANCHORING AT SAWED JOINTS



**SECTION THRU RAIL**



**SECTION S-S**

AT DAM IN OPEN JOINT  
 (THIS IS TO BE USED ONLY WHEN SLIP FORM IS USED)

ASSEMBLED BY : SD	DATE : 8/03
CHECKED BY : JL	DATE : 9/03
DRAWN BY : ARB 5/87	REV. 8/16/99 RWW/LES
CHECKED BY : SJD 9/87	REV. 10/17/00 RWW/LES
	REV. 5/7/03 RWW/JTE