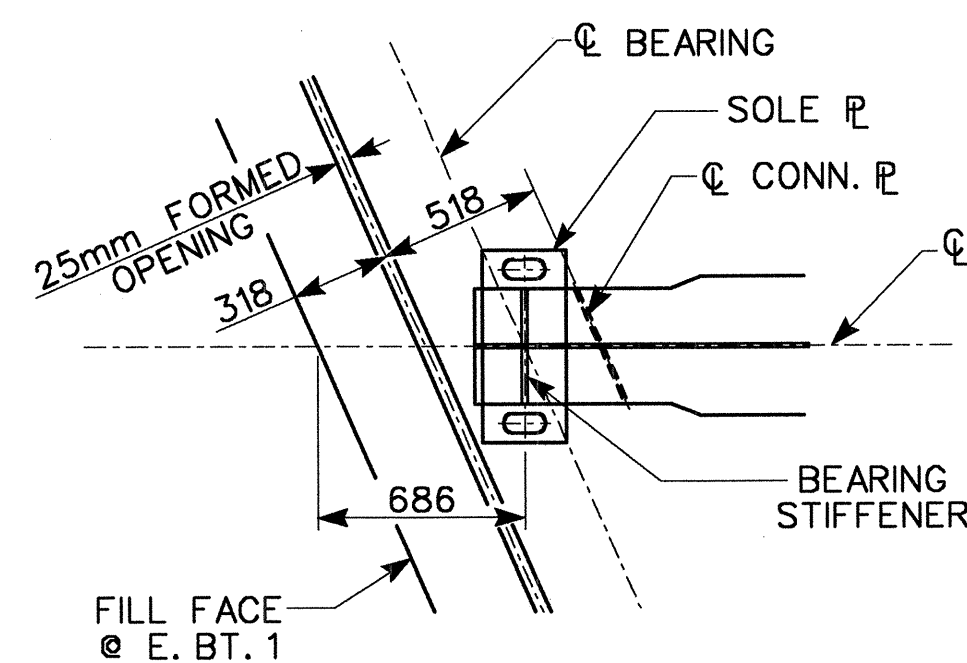


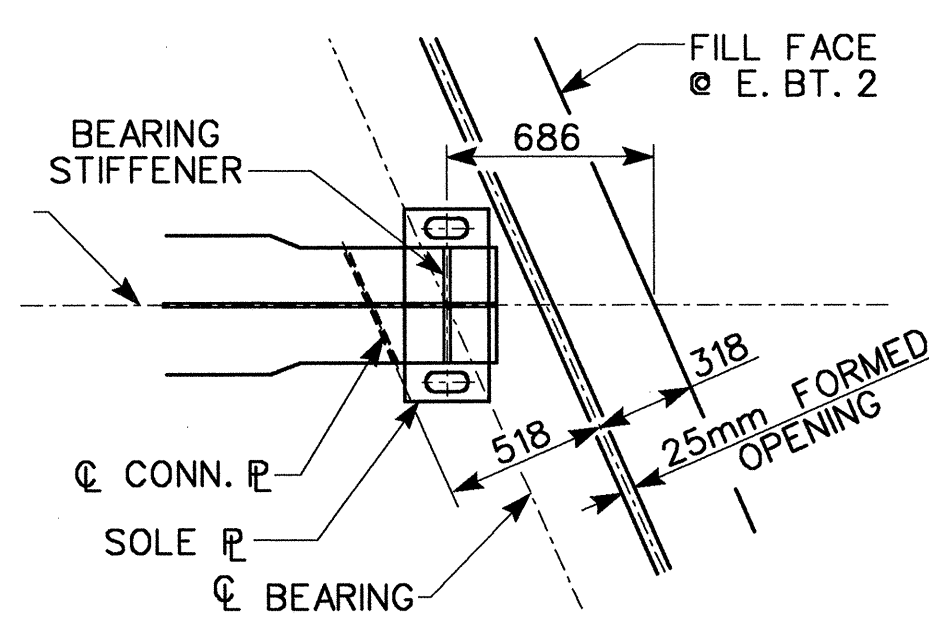
HALF SECTION AT END BENTS 1 & 2

HALF SECTION AT INTERMEDIATE DIAPHRAGMS

TYPICAL SECTION

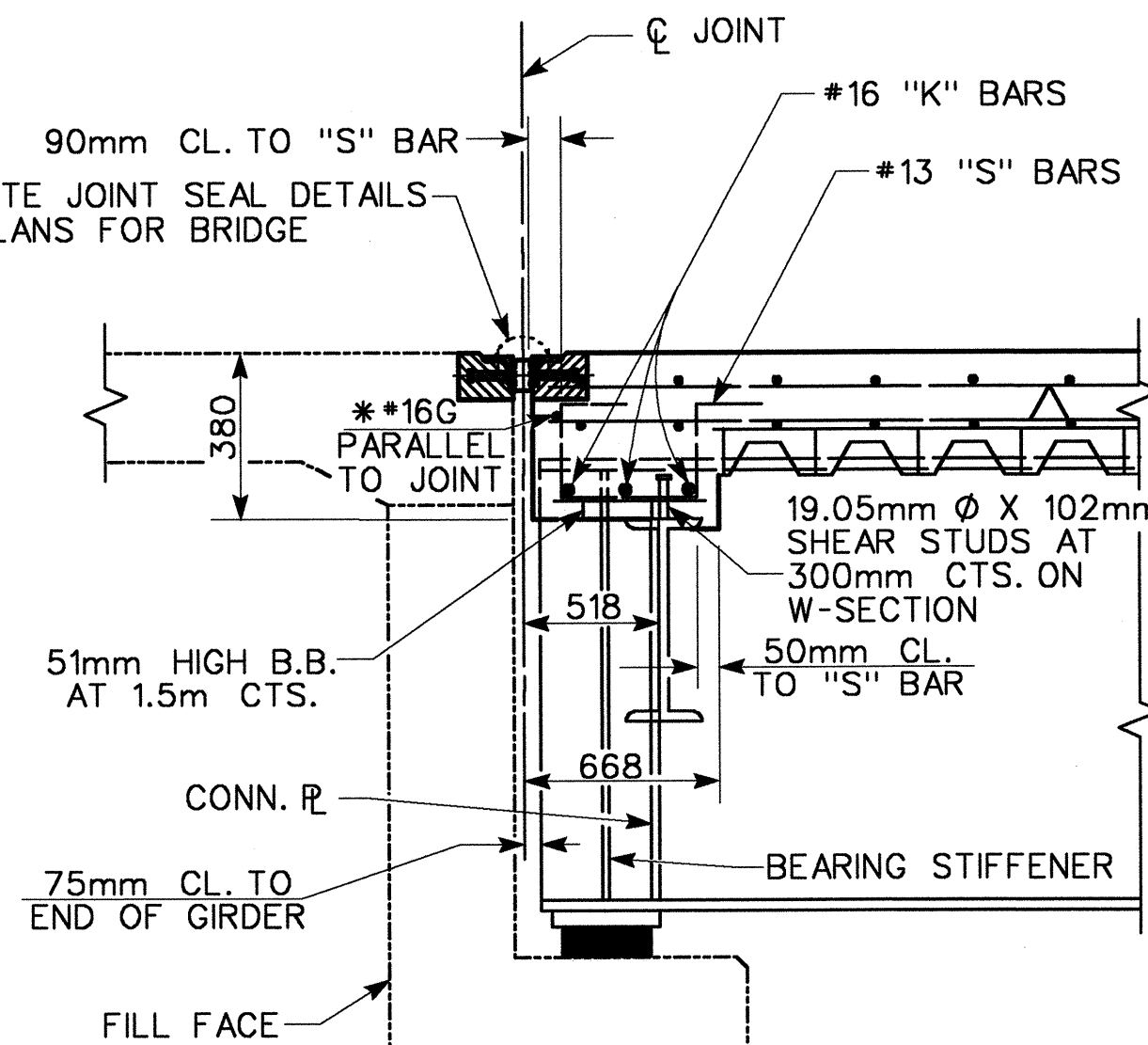


PLAN OF GIRDER AT END BENT 1



PLAN OF GIRDER AT END BENT 2

FOR ARMORED EVAZOTE JOINT SEAL DETAILS AT END BENT, SEE PLANS FOR BRIDGE APPROACH SLABS.



SECTION THRU DIAPHRAGM AT END BENT 1 AND 2

\*#16G BAR MAY BE SHIFTED SLIGHTLY, AS NECESSARY, TO CLEAR REINFORCING STEEL & STIRRUPS.

NOTES

PROVIDE 32mm HIGH BEAM BOLSTERS UPPER AT 1.2m CTS. ATOP THE METAL STAY-IN-PLACE FORMS TO SUPPORT THE BOTTOM MAT OF 'A' BARS. WHEN USING REMOVABLE FORMS, PROVIDE CONTINUOUS HIGH CHAIRS FOR METAL DECK (C.H.C.M.) @ 1.2m CTS. WITH A HEIGHT TO SUPPORT THE BOTTOM MAT OF 'A' BARS A CLEAR DISTANCE OF 65mm ABOVE THE TOP OF THE REMOVABLE FORM.

BARRIER RAIL IN A SIMPLE SPAN SHALL NOT BE CAST UNTIL ALL SLAB CONCRETE IN THE UNIT HAS BEEN CAST AND HAS REACHED A MINIMUM COMPRESSIVE STRENGTH OF 20.7 MPa.

THE CONTRACTOR MAY, WHEN NECESSARY, PROPOSE A SCHEME FOR AVOIDING INTERFERENCE BETWEEN METAL STAY-IN-PLACE FORM SUPPORTS OR FORMS AND BEAM/GIRDER STIFFENER OR CONNECTOR PLATES. THE PROPOSAL SHALL BE INDICATED, AS APPROPRIATE, ON EITHER THE STEEL WORKING DRAWINGS OR THE METAL STAY-IN-PLACE FORM WORKING DRAWINGS.

ALL REINFORCING STEEL IN BARRIER RAILS SHALL BE EPOXY COATED.

THE NOMINAL UNCOMPRESSED SEAL WIDTH OF THE EVAZOTE JOINT SEAL SHALL BE 64mm AT END BENT 1 AND END BENT 2. FOR EVAZOTE JOINT SEALS, SEE SPECIAL PROVISIONS.

NO CHAMFER IS REQUIRED ON CORNERS OF GIRDER BUILDUPS.

PROJECT NO. R-2552B

JOHNSTON COUNTY

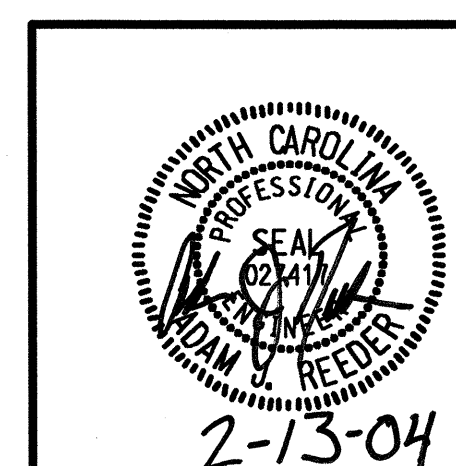
STATION: 78+35.547 -L-  
12+97.374 -Y10-

STATE OF NORTH CAROLINA  
DEPARTMENT OF TRANSPORTATION  
RALEIGH

SUPERSTRUCTURE  
TYPICAL SECTION

(LEFT LANE)

REVISIONS						SHEET NO.
NO.	BY:	DATE:	NO.	BY:	DATE:	S-34
1			3			TOTAL SHEETS
2			4			431



1616 E. MILLBROOK RD., SUITE 310  
RALEIGH, NORTH CAROLINA 27609  
PHONE (919) 876-6888  
FAX (919) 876-6848

DRAWN BY : AR DATE : 6/03  
CHECKED BY : JL DATE : 8/03