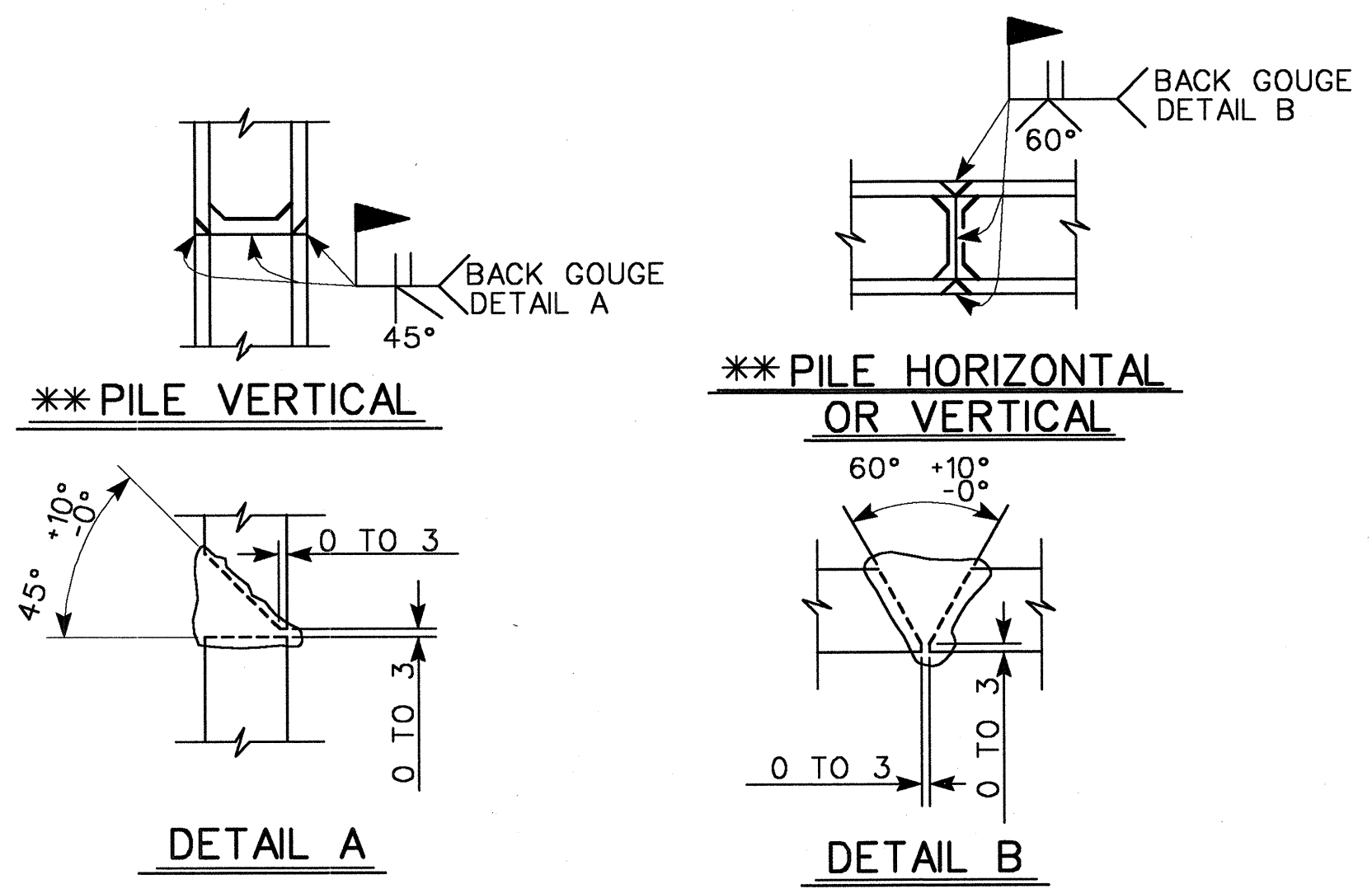


BAGGED STONE AND PIPE SHALL BE PLACED IMMEDIATELY AFTER COMPLETION OF END BENT EXCAVATION. PIPE MAY BE EITHER CONCRETE, CORRUGATED STEEL, CORRUGATED ALUMINUM ALLOY, OR CORRUGATED PLASTIC. PERFORATED PIPE WILL NOT BE ALLOWED.

BAGGED STONE SHALL REMAIN IN PLACE UNTIL THE ENGINEER DIRECTS THAT IT BE REMOVED. THE CONTRACTOR SHALL REMOVE AND DISPOSE OF SILT ACCUMULATIONS AT BAGGED STONE WHEN SO DIRECTED BY THE ENGINEER. BAGS SHALL BE REMOVED AND REPLACED WHENEVER THE ENGINEER DETERMINES THAT THEY HAVE DETERIORATED AND LOST THEIR EFFECTIVENESS.

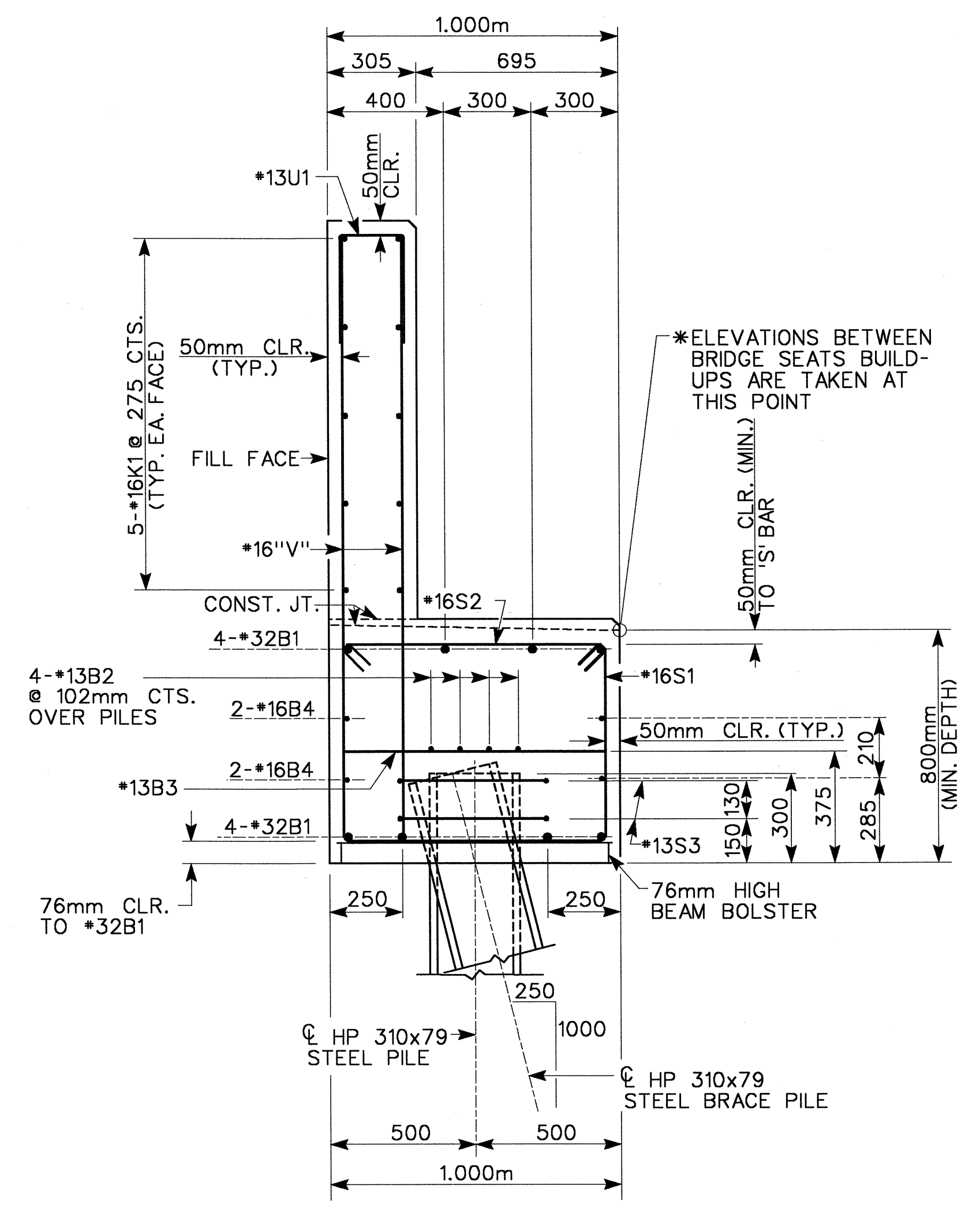
NO SEPARATE PAYMENT WILL BE MADE FOR THIS WORK AND THE ENTIRE COST OF THIS WORK SHALL BE INCLUDED IN THE UNIT CONTRACT PRICE FOR THE SEVERAL PAY ITEMS.

TEMPORARY DRAINAGE AT END BENT



PILE SPLICE DETAILS

** POSITION OF PILE DURING WELDING



SECTION A-A

BAR TYPES						BILL OF MATERIAL FOR END BENT #1						
BAR	NO.	SIZE	TYPE	LENGTH	WEIGHT	BAR	NO.	SIZE	TYPE	LENGTH	WEIGHT	
B1	8	32	4	17260	884	H1	11	16	8	960	16	
B2	8	13	STR	8600	68	H2	11	16	8	1060	18	
B3	14	13	STR	900	13	H3	10	16	7	1360	21	
B4	4	16	STR	16460	102	H4	10	16	7	1280	20	
B5	20	13	STR	740	15	K1	10	16	STR	16460	255	
						S1	64	16	1	2560	254	
						S2	64	16	2	1180	117	
						S3	18	13	5	1980	35	
						U1	48	13	3	1200	57	
						U2	25	13	3	1900	47	
						U3	4	16	6	2040	13	
						V1	96	16	STR	1940	289	
						V2	16	16	STR	2380	59	
						V3	18	16	STR	2420	68	
REINFORCING STEEL -											kg	2351
CLASS A CONCRETE BREAKDOWN												
POUR 1 - (CAP & BOT. OF WINGS)											m ³	14.3
POUR 2 - (TOP OF WINGS & BACKWALL)											m ³	7.5
CLASS A CONCRETE TOTAL											m ³	21.8
HP 310x79 STEEL PILES												
NO. 9											METERS	162.0

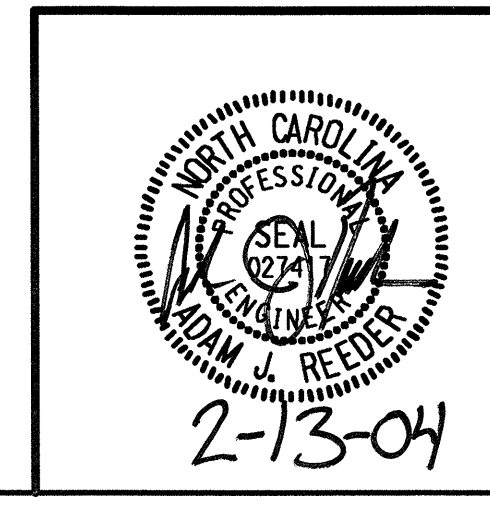
ALL BAR DIMENSIONS ARE OUT TO OUT.

PROJECT NO. R-2552B
JOHNSTON COUNTY
 STATION: 78+35.547 -L-
12+97.374 -Y10-
 SHEET 3 of 3

STATE OF NORTH CAROLINA
 DEPARTMENT OF TRANSPORTATION
 RALEIGH

**END BENT #2
 SUBSTRUCTURE
 (LEFT LANE)**

REVISIONS					SHEET NO.
NO.	BY:	DATE:	NO.	BY:	DATE:
1			3		
2			4		



PBS&J
 1616 E. MILLBROOK RD., SUITE 310
 RALEIGH, NORTH CAROLINA 27609
 PHONE (919) 876-6888
 FAX (919) 876-6848

DRAWN BY : SD DATE : 6/03
 CHECKED BY : AR DATE : 9/03