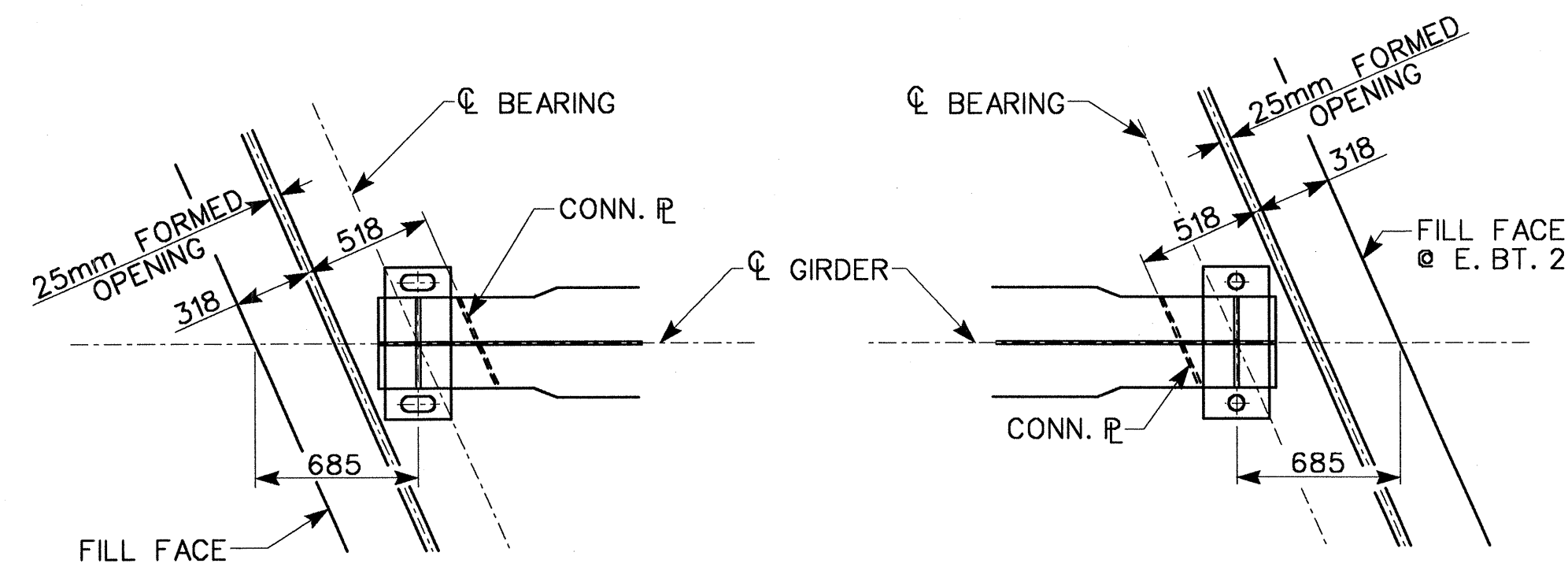


HALF SECTION AT
END BENTS 1 & 2

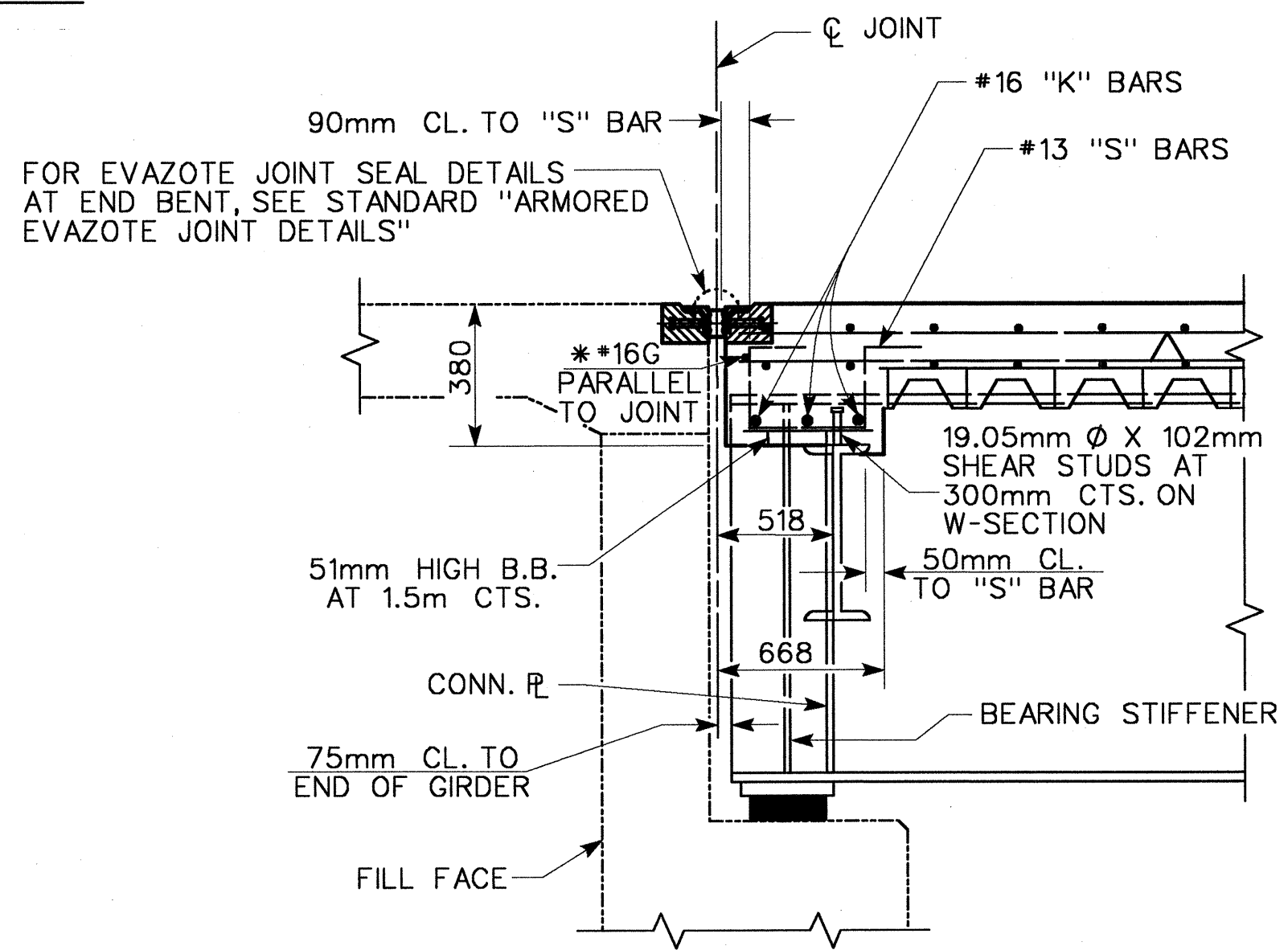
HALF SECTION AT
INTERMEDIATE DIAPHRAGM

TYPICAL SECTION



PLAN OF GIRDER
AT END BENT 1

PLAN OF GIRDER
AT END BENT 2



SECTION THRU DIAPHRAGM
AT END BENT 1 AND 2

NOTES

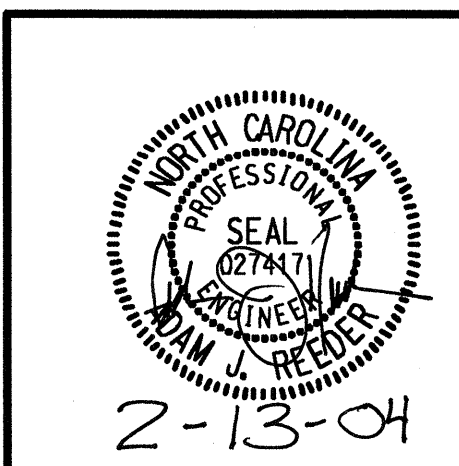
- PROVIDE 32mm HIGH BEAM BOLSTERS UPPER AT 1.2m CTS. ATOP THE METAL STAY-IN-PLACE FORMS TO SUPPORT THE BOTTOM MAT OF 'A' BARS. WHEN USING REMOVABLE FORMS, PROVIDE CONTINUOUS HIGH CHAIRS FOR METAL DECK (C.H.C.M.) @ 1.2m CTS. WITH A HEIGHT TO SUPPORT THE BOTTOM MAT OF 'A' BARS A CLEAR DISTANCE OF 65mm ABOVE THE TOP OF THE REMOVABLE FORM.
- BARRIER RAIL IN A SIMPLE SPAN SHALL NOT BE CAST UNTIL ALL SLAB CONCRETE IN THE UNIT HAS BEEN CAST AND HAS REACHED A MINIMUM COMPRESSIVE STRENGTH OF 20.7 MPa.
- THE CONTRACTOR MAY, WHEN NECESSARY, PROPOSE A SCHEME FOR AVOIDING INTERFERENCE BETWEEN METAL STAY-IN-PLACE FORM SUPPORTS OR FORMS AND BEAM/GIRDER STIFFENER OR CONNECTOR PLATES. THE PROPOSAL SHALL BE INDICATED, AS APPROPRIATE, ON EITHER THE STEEL WORKING DRAWINGS OR THE METAL STAY-IN-PLACE FORM WORKING DRAWINGS.
- ALL REINFORCING STEEL IN BARRIER RAILS SHALL BE EPOXY COATED.
- THE NOMINAL UNCOMPRESSED SEAL WIDTH OF THE EVAZOTE JOINT SEAL SHALL BE 64mm AT END BENT 1 AND END BENT 2. FOR EVAZOTE JOINT SEALS, SEE SPECIAL PROVISIONS.
- NO CHAMFER IS REQUIRED ON CORNERS OF GIRDER BUILDUPS.

*16G BAR MAY BE SHIFTED SLIGHTLY, AS NECESSARY, TO CLEAR REINFORCING STEEL & STIRRUPS.

PROJECT NO. R-2552B
JOHNSTON COUNTY
 STATION: 78+35.547 -L-
12+97.374 -Y10-

STATE OF NORTH CAROLINA
 DEPARTMENT OF TRANSPORTATION
 RALEIGH

SUPERSTRUCTURE
 TYPICAL SECTION
 (RIGHT LANE)



REVISIONS				SHEET NO.
NO.	BY:	DATE:	NO.	DATE:
1			3	
2			4	



1616 E. MILLBROOK RD., SUITE 310
 RALEIGH, NORTH CAROLINA 27609
 PHONE (919) 876-6888
 FAX (919) 876-6848

DRAWN BY : AR DATE : 6/03
 CHECKED BY : JL DATE : 8/03

2-13-04