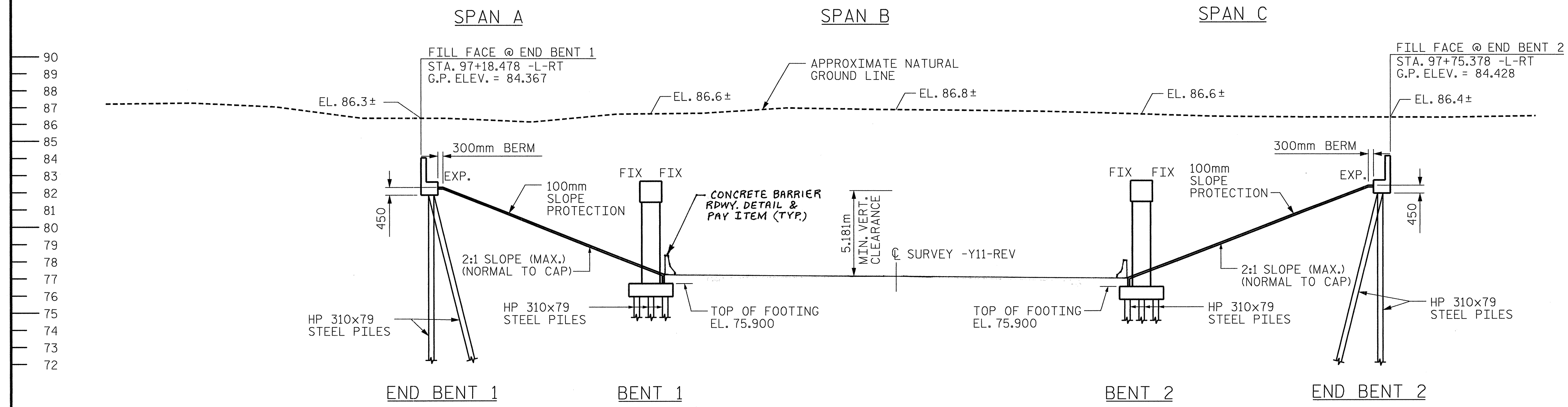


97+00 97+10 97+20 97+30 97+40 97+50 97+60 97+70 97+80 97+90

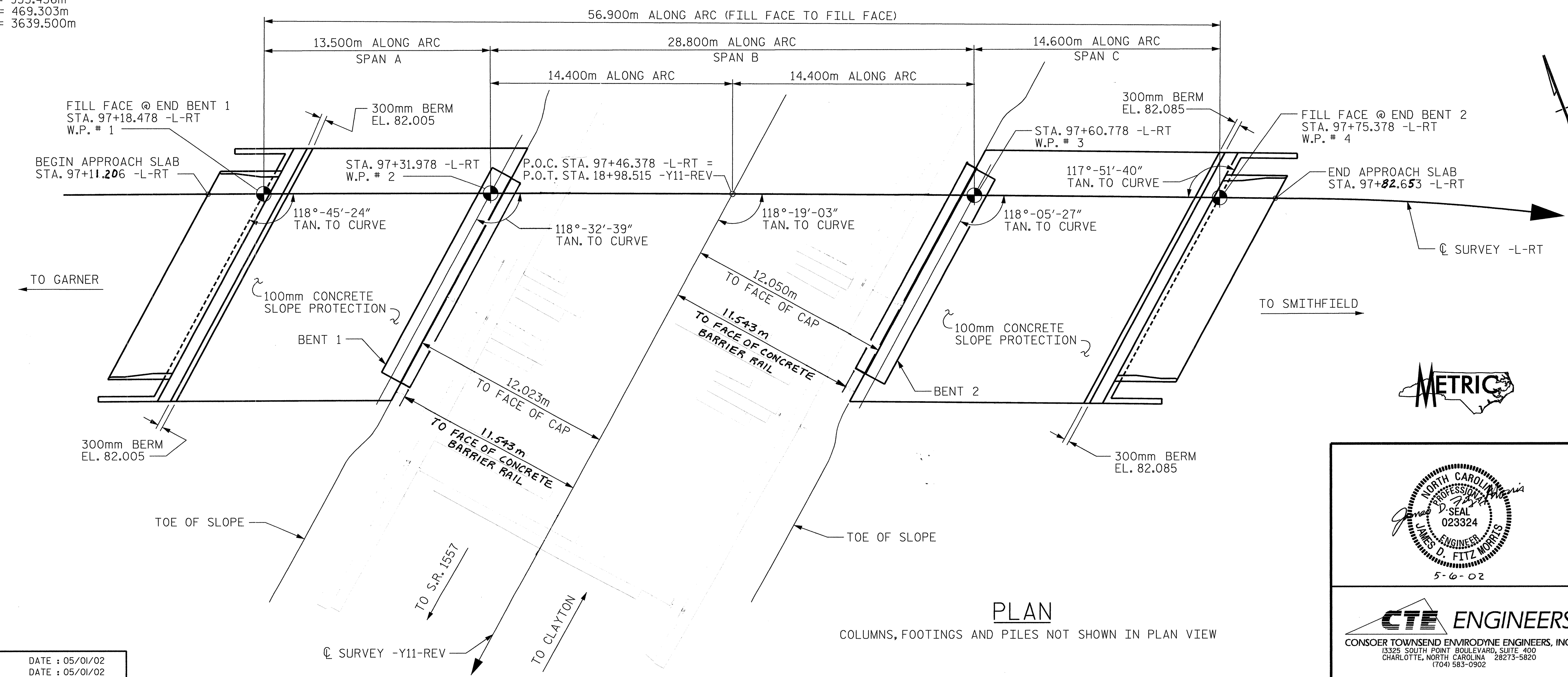


GRADE DATA
 P.I. STA. = 97+55.000 -L-RT
 ELEV. = 88.742
 V.C. = 720.000m



SECTION ALONG C SURVEY -L-RT
 SECTION AT END BENTS AND BENTS ARE AT RIGHT ANGLES

HORIZONTAL CURVE DATA -L-RT
 P.I. STA. = 99+32.404 -L-RT
 $\Delta = 14^{\circ}-41'-42''$ (RT)
 L = 933.456m
 T = 469.303m
 R = 3639.500m

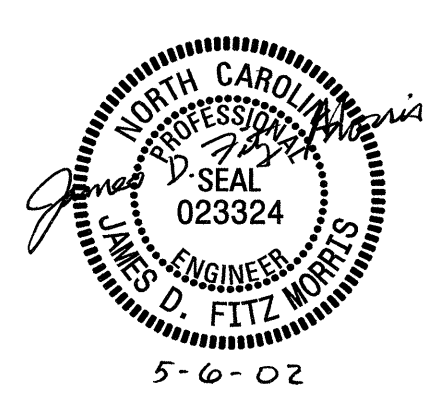


PLAN

COLUMNS, FOOTINGS AND PILES NOT SHOWN IN PLAN VIEW

PROJECT NO. **R-2552B**
JOHNSTON COUNTY
 STATION: **97+46.378-L-RT POC**
18+98.515-Y11-REV POT

SHEET 1 OF 4 BRIDGE NO. 586



CTE ENGINEERS
 CONSOER TOWNSEND ENVIRODYNE ENGINEERS, INC.
 13325 SOUTH POINT BOULEVARD, SUITE 400
 CHARLOTTE, NORTH CAROLINA 28273-5820
 (704) 583-6902

STATE OF NORTH CAROLINA
 DEPARTMENT OF TRANSPORTATION
 RALEIGH
GENERAL DRAWING
BRIDGE ON US70 -L-RT
CLAYTON BYPASS OVER
SR 1560 BETWEEN GARNER
AND SMITHFIELD

REVISIONS		SHEET NO.	
NO.	BY:	NO.	DATE:
1		3	
2		4	

TOTAL SHEETS: 43

DRAWN BY : JDF DATE : 05/01/02
 CHECKED BY : JAW DATE : 05/01/02