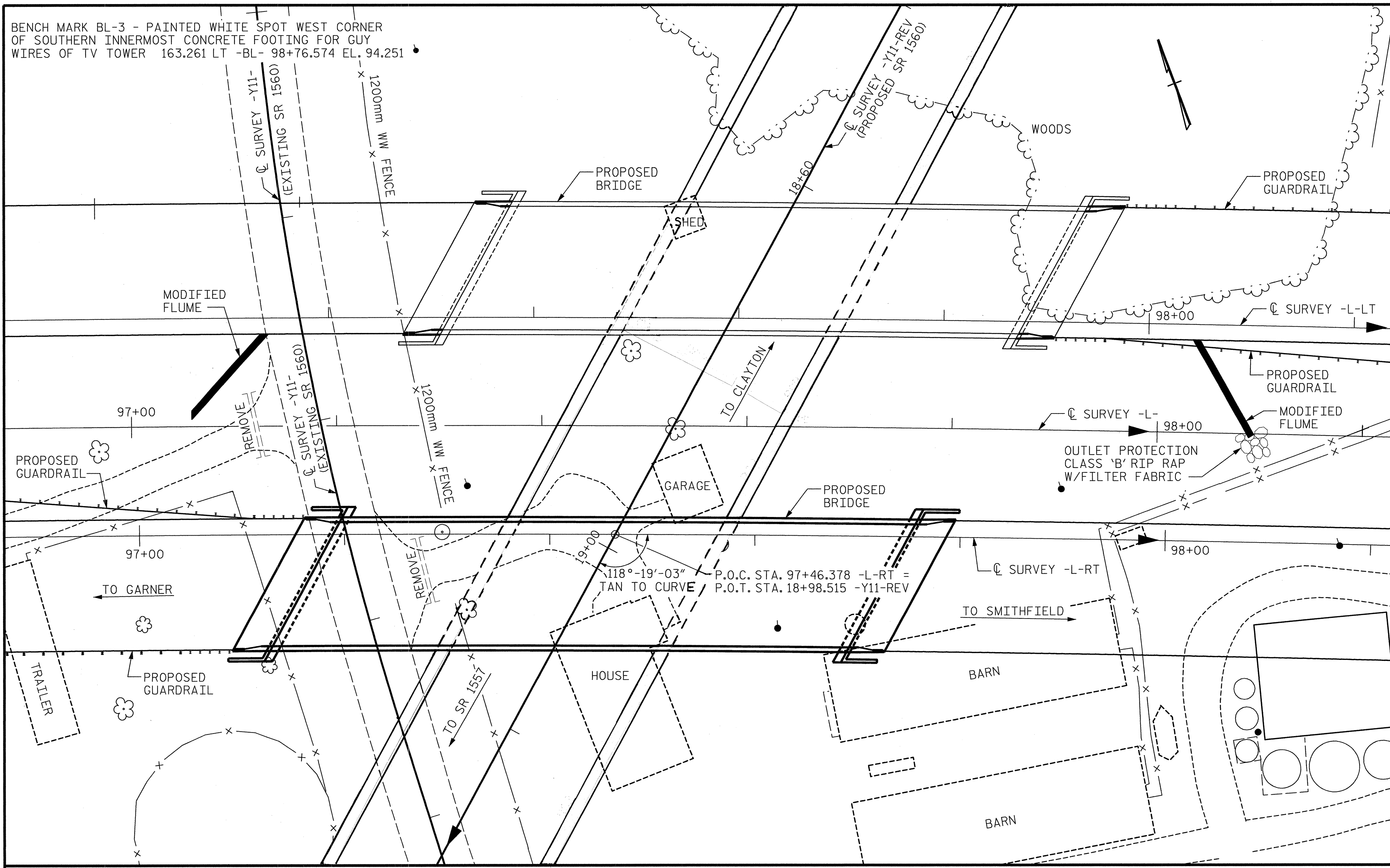


BENCH MARK BL-3 - PAINTED WHITE SPOT WEST CORNER OF SOUTHERN INNERMOST CONCRETE FOOTING FOR GUY WIRES OF TV TOWER 163.261 LT -BL- 98+76.574 EL. 94.251



NOTES

- ALL DIMENSIONS ARE IN MILLIMETERS UNLESS OTHERWISE NOTED.
- ALL ELEVATIONS ARE IN METERS.
- ASSUMED LIVE LOAD = MS18 OR ALTERNATE LOADING.
- FOR OTHER DESIGN DATA AND GENERAL NOTES, SEE SHEET SNSM.
- FOR EROSION CONTROL MEASURES SEE EROSION CONTROL PLANS.
- THIS BRIDGE HAS BEEN DESIGNED BY THE STRENGTH DESIGN METHOD AS SPECIFIED IN AASHTO STANDARD SPECIFICATIONS.
- WORK SHALL NOT BE STARTED ON THIS BRIDGE UNTIL ROADWAY SECTION HAS BEEN EXCAVATED.
- THIS BRIDGE HAS BEEN DESIGNED IN ACCORDANCE WITH THE REQUIREMENTS OF THE STANDARD SPECIFICATIONS FOR SEISMIC DESIGN OF HIGHWAY BRIDGES FOR SEISMIC PERFORMANCE CATEGORY A.
- NO KNOWN UTILITY CONFLICTS.
- NEEDLE BEAMS WILL NOT BE ALLOWED UNLESS OTHERWISE CALLED FOR ON THE PLANS OR APPROVED BY THE ENGINEER.
- FOR SUBMITTAL OF WORKING DRAWINGS, SEE SPECIAL PROVISIONS.
- FOR METRIC STRUCTURAL STEEL, SEE SPECIAL PROVISIONS.
- FOR FALSEWORK AND FORMWORK, SEE SPECIAL PROVISIONS.
- PILES FOR END BENT NO. 1 AND 2 SHALL BE DRIVEN TO A MINIMUM BEARING CAPACITY OF 530KN EACH.
- PILES FOR BENTS 1 & 2 SHALL BE DRIVEN TO A MINIMUM BEARING CAPACITY OF 530KN EACH.
- WAITING PERIOD FOR APPROACH SLAB CONSTRUCTION SHALL BE WAIVED.
- FOR CRANE SAFETY, SEE SPECIAL PROVISIONS.
- THE CONTRACTOR MAY CHOOSE TO UTILIZE THE STANDARD OVERHANG FALSEWORK BRACING SYSTEM, SEE "STANDARD OVERHANG FALSEWORK" SHEETS.

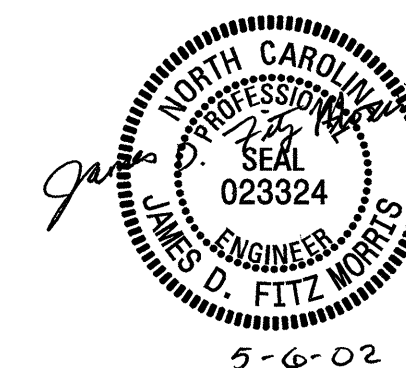
TOTAL BILL OF MATERIAL

	FOUNDATION EXCAVATION	REINFORCED CONCRETE DECK SLAB	GROOVING BRIDGE FLOORS	CLASS A CONCRETE	BRIDGE APPROACH SLABS	REINFORCING STEEL	SPIRAL COLUMN REINFORCING STEEL	1372mm PRESTRESSED CONCRETE GIRDERS	HP 310 X 79 STEEL PILES	CONCRETE BARRIER RAIL	100mm SLOPE PROTECTION	ELASTOMERIC BEARINGS	EVAZOTE JOINT SEALS
	LUMP SUM	SQ. METERS	SQ. METERS	CU. METERS	LUMP SUM	KG	KG	NO. METERS	NO. METERS	METERS	SQ. METERS	LUMP SUM	LUMP SUM
SUPERSTRUCTURE		726.9	785.2		LUMP SUM			12 220.960		112.401		LUMP SUM	LUMP SUM
END BENT 1				30.3		2763			8 136.0		222		
BENT 1	LUMP SUM			53.5		4728	679		15 180.0				
BENT 2	LUMP SUM			53.5		4735	679		15 120.0				
END BENT 2				30.0		2746			8 136.0		223		
TOTAL	LUMP SUM	726.9	785.2	167.3	LUMP SUM	14972	1358	12 220.960	46 572.0	112.401	445	LUMP SUM	LUMP SUM

PROJECT NO. **R-2552B**
JOHNSTON COUNTY
 STATION: **97+46.378-L-RT POC**
18+98.515-Y11-REV POT



SHEET 4 OF 4



CTE ENGINEERS
 CONSOER TOWNSEND ENVIRONMENTAL ENGINEERS, INC.
 1325 SOUTH POINT BOULEVARD, SUITE 400
 CHARLOTTE, NORTH CAROLINA 28273-5820
 (704) 583-0902

STATE OF NORTH CAROLINA
 DEPARTMENT OF TRANSPORTATION
 RALEIGH
GENERAL DRAWING
BRIDGE ON US70 -L-RT
CLAYTON BYPASS OVER
SR 1560 BETWEEN GARNER
AND SMITHFIELD

DRAWN BY : MSB DATE : 05/01/02
 CHECKED BY : JDF DATE : 05/01/02

REVISIONS				SHEET NO.
NO.	BY:	DATE:	NO.	DATE:
1			3	
2			4	

TOTAL SHEETS: 43