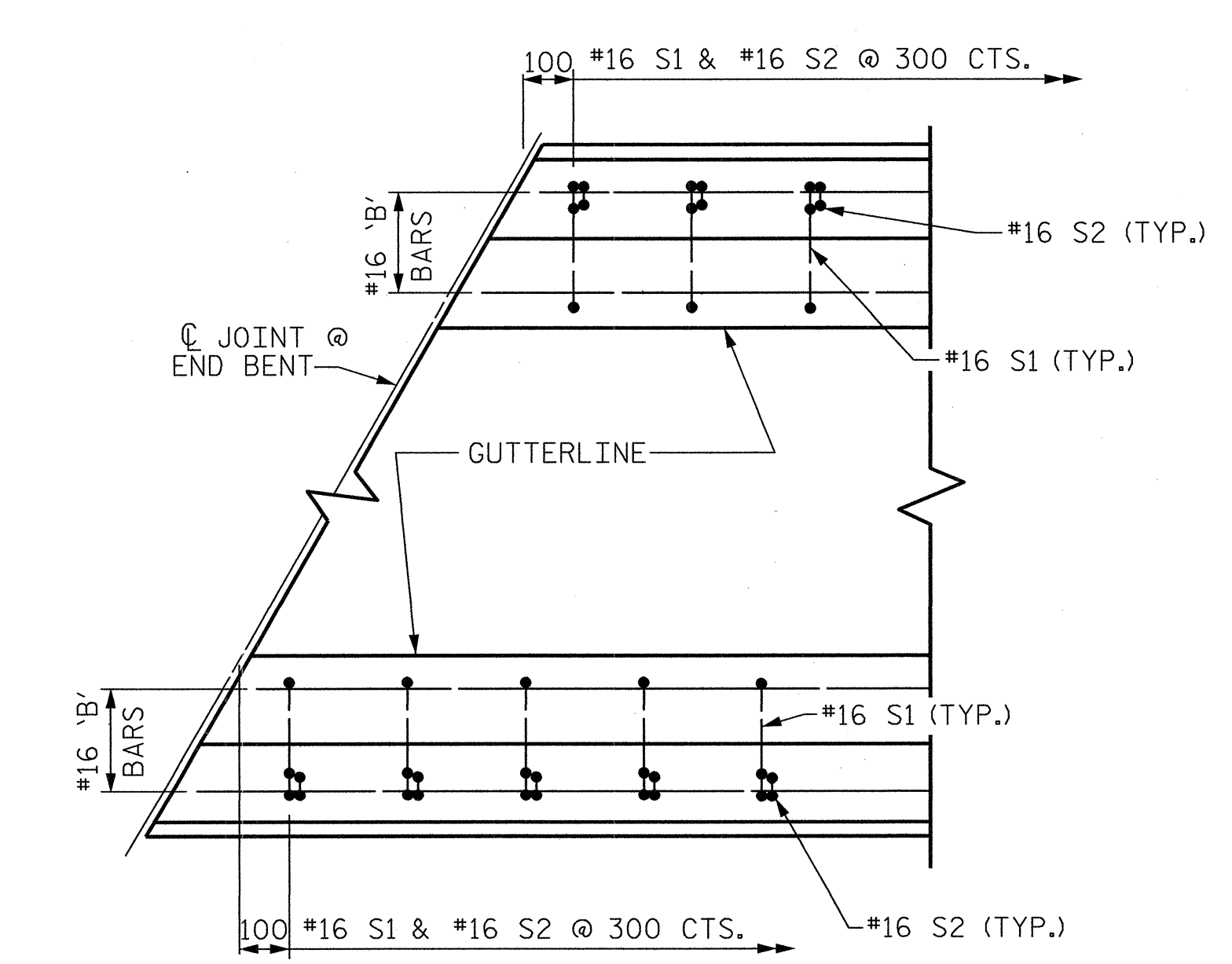
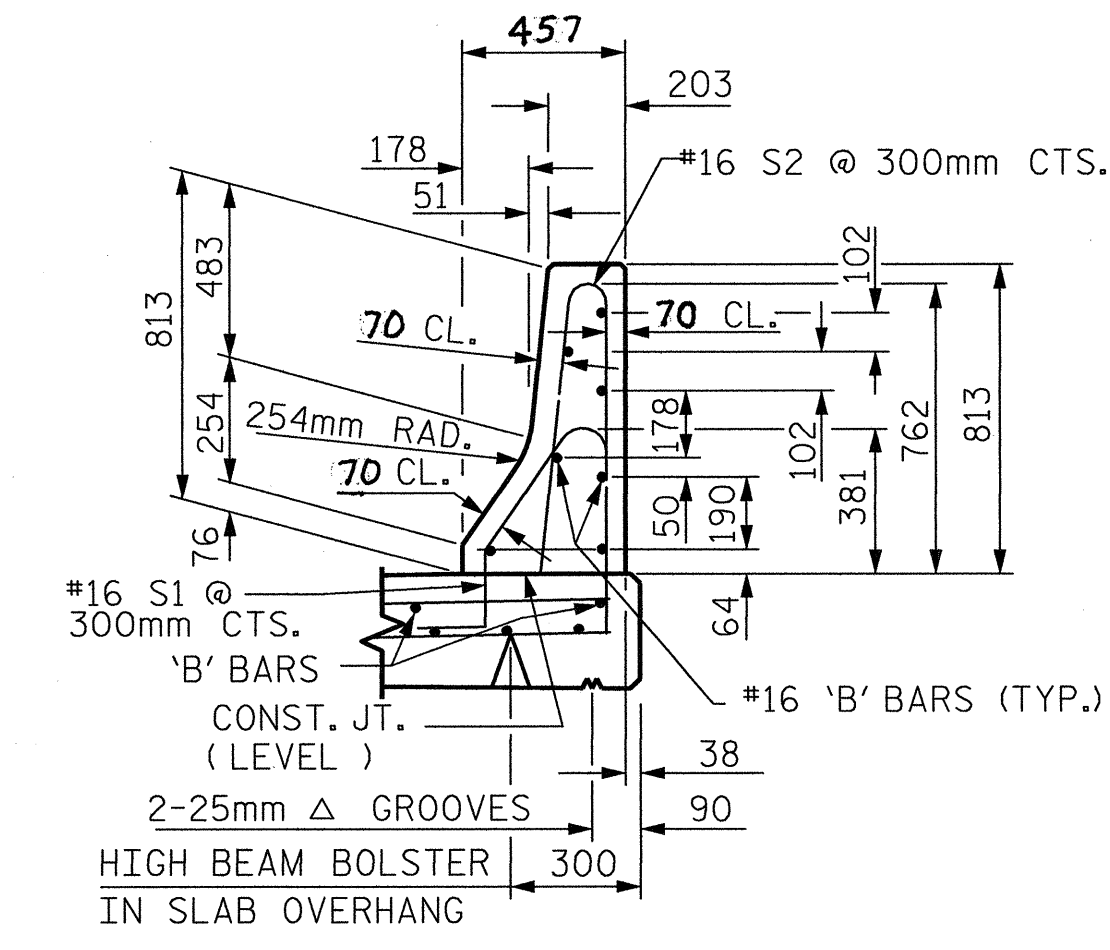


**PLAN OF CONCRETE BARRIER RAIL**

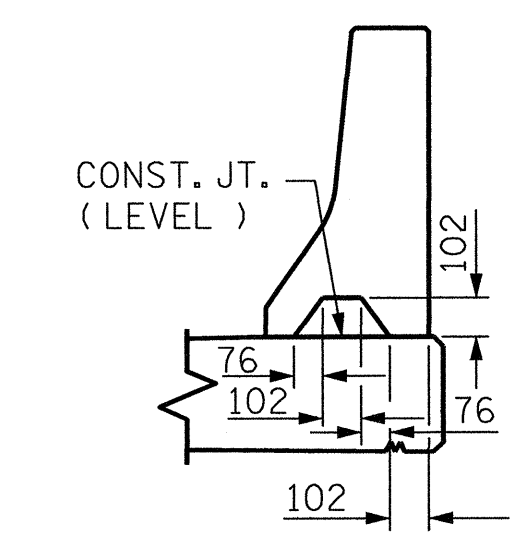
\*16 'S' BARS MAY BE SHIFTED SLIGHTLY IN ORDER TO MAINTAIN 50mm MIN. CLEARANCE TO EXPANSION JOINT IN RAILS



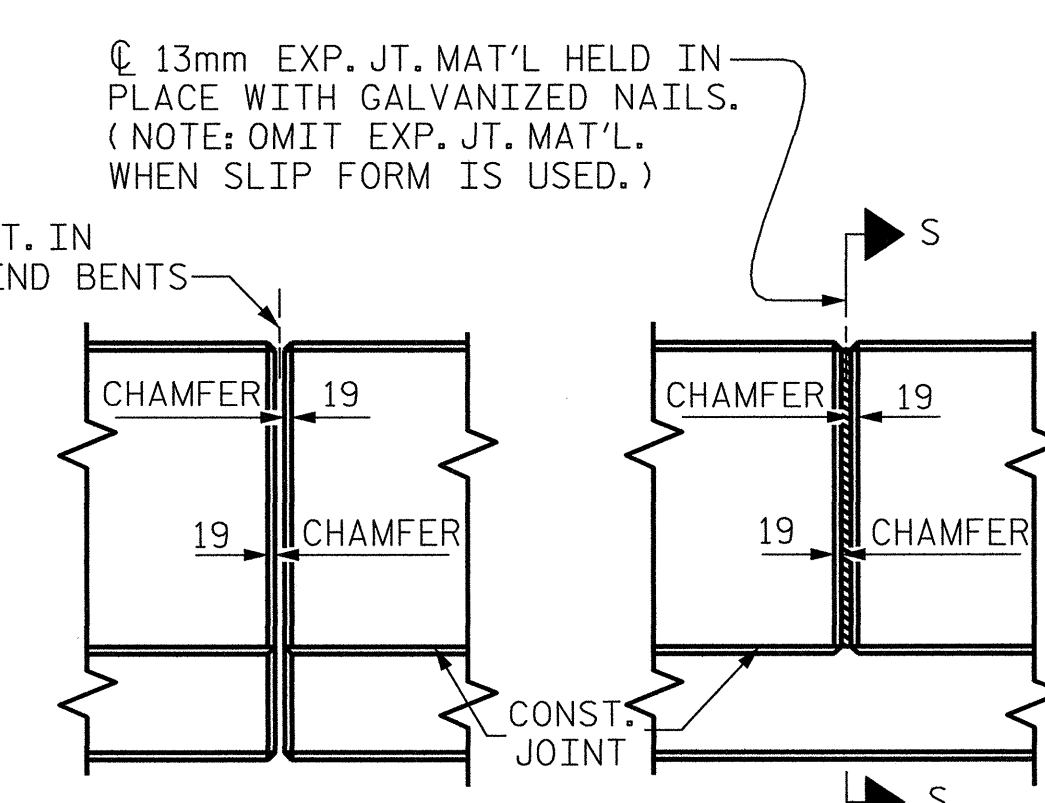
PLAN  
END OF RAIL DETAILS



SECTION THRU RAIL



SECTION S-S  
AT DAM IN OPEN JOINT  
(THIS IS TO BE USED ONLY WHEN SLIP FORM IS USED)



ELEVATION AT EXPANSION JOINTS  
BARRIER RAIL DETAILS

**NOTES**

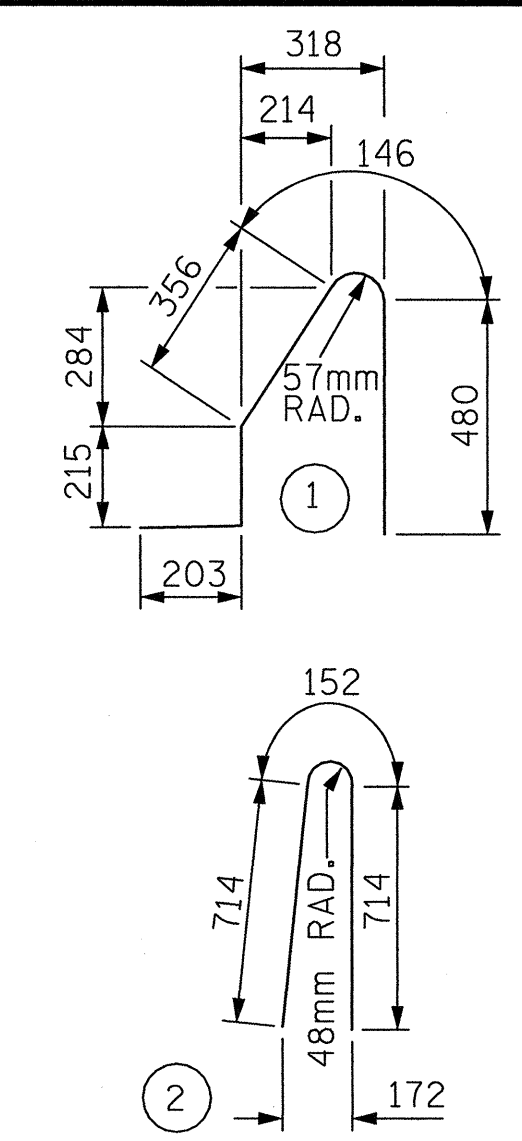
THE BARRIER RAIL IN A CONTINUOUS UNIT SHALL NOT BE CAST UNTIL ALL SLAB CONCRETE IN THAT SPAN HAS BEEN CAST AND HAS REACHED A MINIMUM COMPRESSIVE STRENGTH OF 20.7 MPa.

WHEN USING ARMORED EVAZOTE JOINT SEAL, THE JOINT IN THE DECK SHALL BE FORMED PRIOR TO THE CASTING OF BARRIER RAIL.

ALL REINFORCING STEEL IN BARRIER RAILS SHALL BE EPOXY COATED.

VERTICAL GROOVED CONTRACTION JOINTS, 12mm IN DEPTH, SHALL BE TOOLED IN ALL EXPOSED FACES OF THE BARRIER RAIL AND IN ACCORDANCE WITH ARTICLE 825-10(B) OF THE STANDARD SPECIFICATIONS. A JOINT SHALL BE LOCATED AT EACH THIRD POINT BETWEEN BARRIER RAIL EXPANSION JOINTS. ONLY ONE JOINT IS REQUIRED AT MIDPOINT OF BARRIER RAIL SEGMENTS LESS THAN 6.1m IN LENGTH AND NO JOINTS ARE REQUIRED FOR THOSE SEGMENTS LESS THAN 3.5m IN LENGTH.

**BAR TYPES**



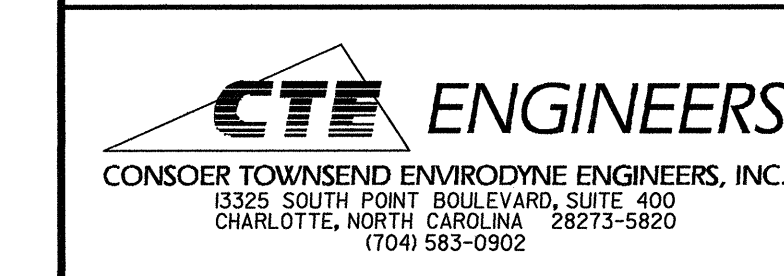
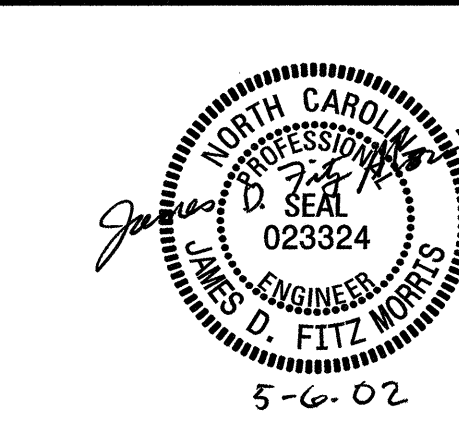
ALL BAR DIMENSIONS ARE OUT TO OUT

**BILL OF MATERIAL**

FOR CONCRETE BARRIER RAIL ONLY					
BAR	NO.	SIZE	TYPE	LENGTH	WEIGHT
* B1	28	#16	STR	3580	156
* B2	84	#16	STR	7080	923
* B3	28	#16	STR	4120	179
* S1	374	#16	1	1400	813
* S2	374	#16	2	1580	917
* EPOXY COATED REINFORCING STEEL					2988 kg
CLASS AA CONCRETE					28.2 CU. METER
CONCRETE BARRIER RAIL					112.401 METERS

\* DENOTES EPOXY COATED REINFORCING STEEL

PROJECT NO. **R-2552B**  
**JOHNSTON** COUNTY  
 STATION: **97+46.378-L-RT POC**



STATE OF NORTH CAROLINA  
 DEPARTMENT OF TRANSPORTATION  
 RALEIGH  
**STANDARD**  
**CONCRETE BARRIER RAIL**

REVISIONS				SHEET NO.
NO.	BY:	DATE:	NO.	DATE:
1			3	
2			4	

TOTAL SHEETS: 431

ASSEMBLED BY : MHF	DATE : 05/01/02
CHECKED BY : MSB	DATE : 05/01/02
DRAWN BY : ARB 5/87	REV. 7/17/98 RWW/LES
CHECKED BY : SJD 9/87	REV. 8/16/99 RWW/LES
	REV. 10/17/00R RWW/LES