

SECTION A-A

— BILL OF MATERIAL —  
END BENT No. 2

BAR	No.	SIZE	TYPE	LENGTH	WEIGHT
B1	8	#32	1	13320	682
B2	4	#22	STR	12520	152
B3	8	#13	STR	6620	53
B4	11	#13	STR	900	10
B5	12	#13	STR	860	10
H1	9	#16	7	3080	42
H2	9	#16	7	3040	42
H3	9	#16	6	2780	39
H4	9	#16	6	2820	39
K1	16	#13	STR	6620	105
K2	8	#13	STR	900	7
S1	44	#13	2	2380	104
S2	44	#13	3	1120	49
S3	14	#13	4	1980	28
U1	36	#13	5	1120	40
U2	9	#13	5	1820	16
V1	72	#16	STR	1780	199
V2	28	#13	STR	2220	62
V3	26	#13	STR	2180	56
REINFORCING STEEL					1735 kg

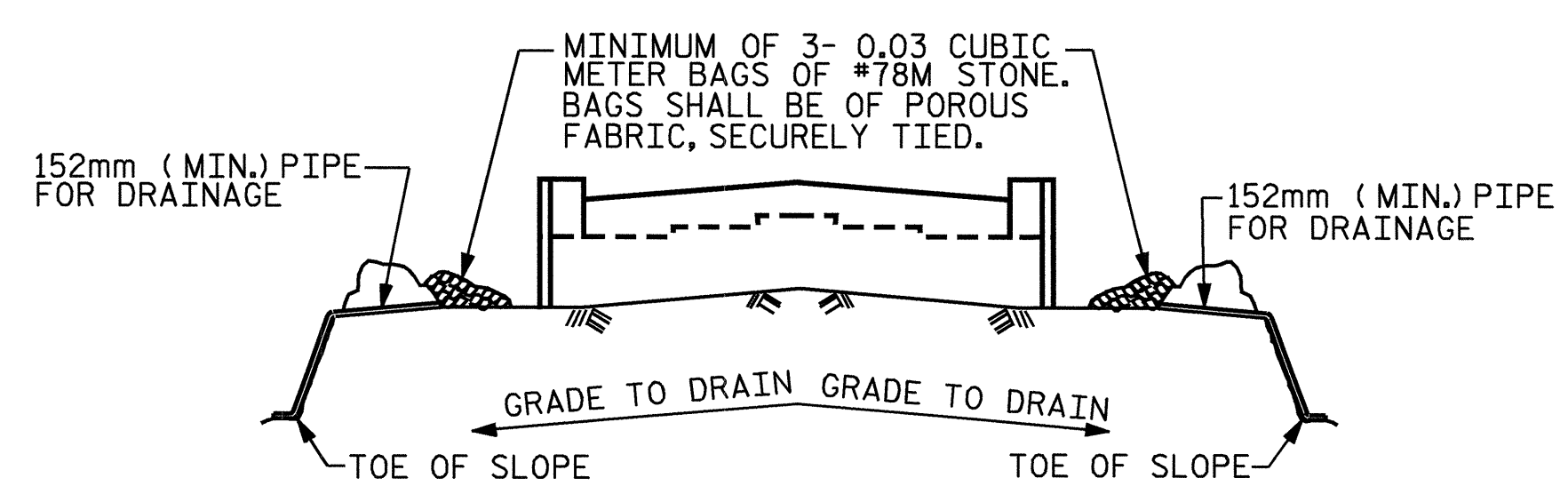
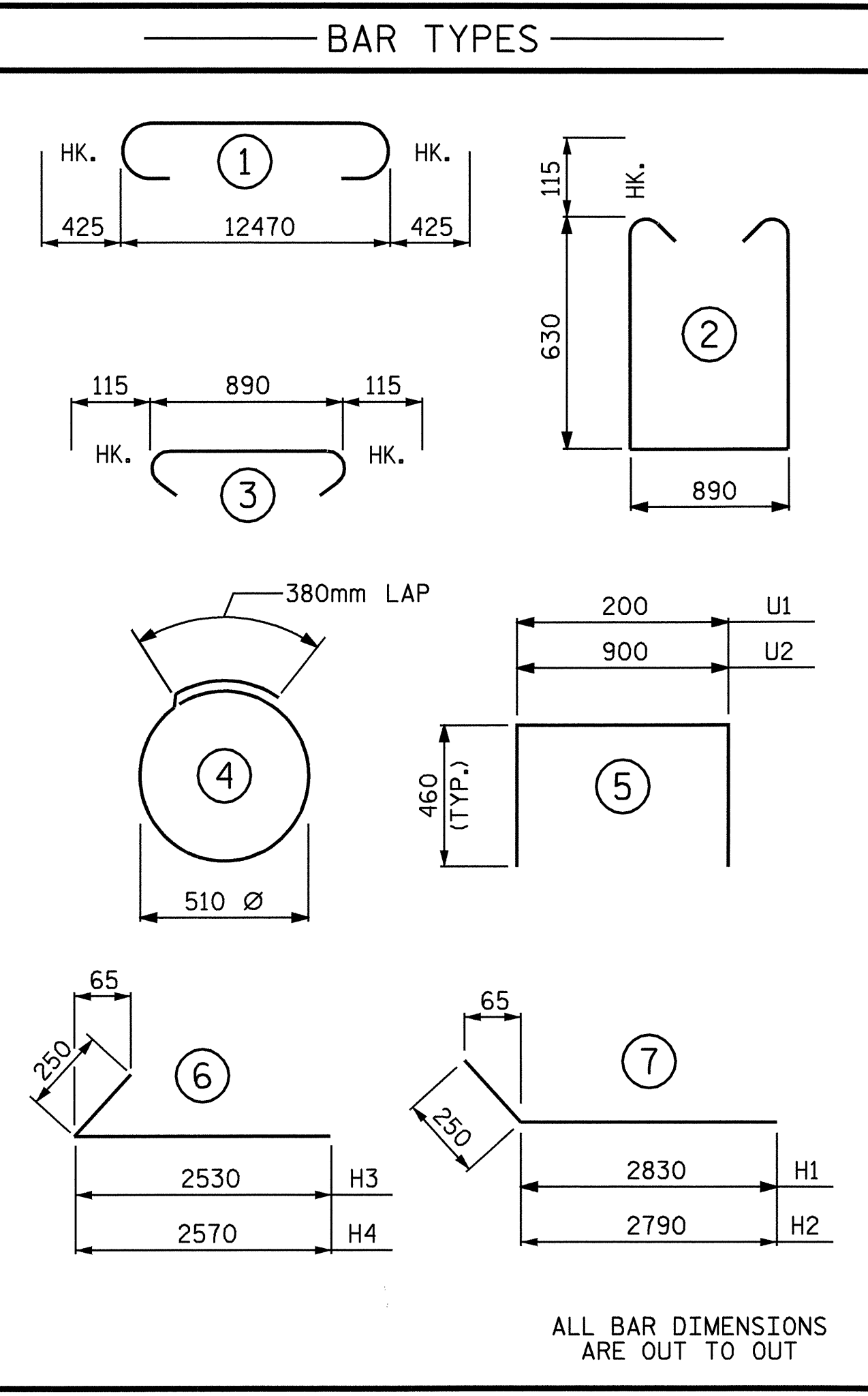
  

CLASS A CONCRETE BREAKDOWN

POUR #1 (CAP & LOWER PART OF WINGS)	= 11.4m <sup>3</sup>
POUR #2 (BACKWALL & UPPER PART OF WINGS)	= 7.1m <sup>3</sup>
TOTAL CLASS A CONCRETE	= 18.5m <sup>3</sup>

HP 310 x 79 STEEL PILES	
No. 7 METERS 33.5	



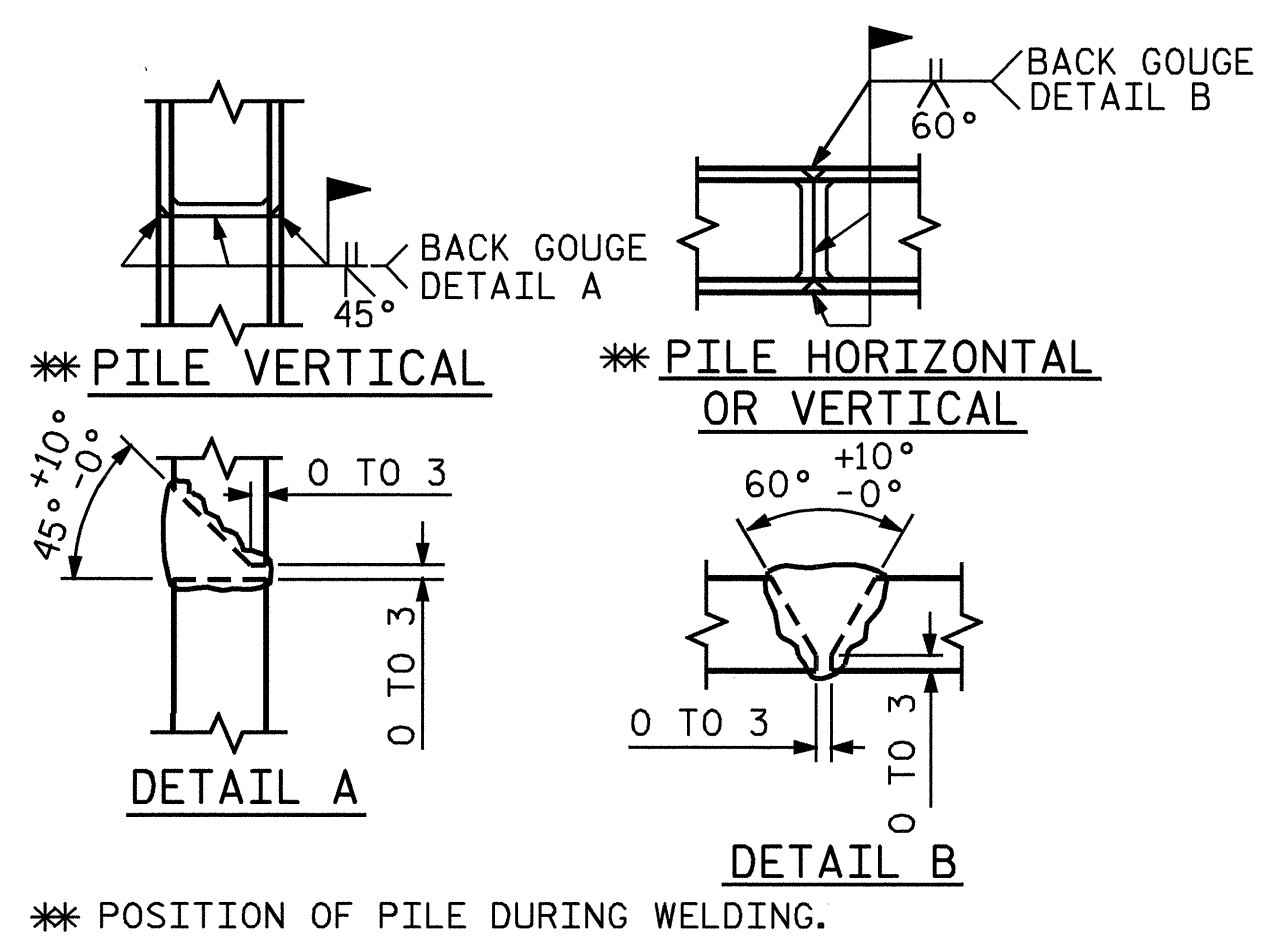
MINIMUM OF 3- 0.03 CUBIC METER BAGS OF #78M STONE. BAGS SHALL BE OF POROUS FABRIC, SECURELY TIED.

BAGGED STONE AND PIPE SHALL BE PLACED IMMEDIATELY AFTER COMPLETION OF END BENT EXCAVATION. PIPE MAY BE EITHER CONCRETE, CORRUGATED STEEL, CORRUGATED ALUMINUM ALLOY, OR CORRUGATED PLASTIC. PERFORATED PIPE WILL NOT BE ALLOWED.

BAGGED STONE SHALL REMAIN IN PLACE UNTIL THE ENGINEER DIRECTS THAT IT BE REMOVED. THE CONTRACTOR SHALL REMOVE AND DISPOSE OF SILT ACCUMULATIONS AT BAGGED STONE WHEN SO DIRECTED BY THE ENGINEER. BAGS SHALL BE REMOVED AND REPLACED WHENEVER THE ENGINEER DETERMINES THAT THEY HAVE DETERIORATED AND LOST THEIR EFFECTIVENESS.

NO SEPARATE PAYMENT WILL BE MADE FOR THIS WORK AND THE ENTIRE COST OF THIS WORK SHALL BE INCLUDED IN THE UNIT CONTRACT PRICE FOR THE SEVERAL PAY ITEMS.

TEMPORARY DRAINAGE AT END BENT



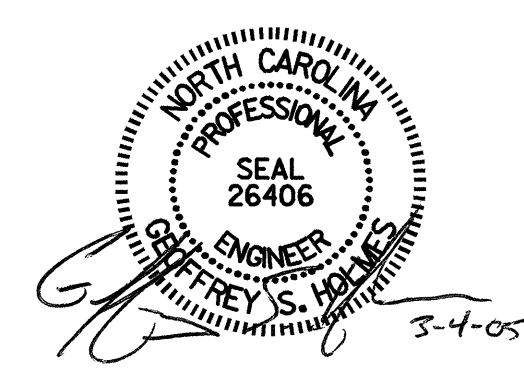
PILE SPLICE DETAILS

PROJECT NO. R-2552B  
JOHNSTON COUNTY  
 STATION: 14+72.000-Y11-REV.

SHEET 3 OF 3

STATE OF NORTH CAROLINA  
 DEPARTMENT OF TRANSPORTATION  
 RALEIGH

SUBSTRUCTURE  
 END BENT No. 2



DRAWN BY : P.C. BREWER DATE : 8/23/04  
 CHECKED BY : H. LUCAS DATE : 9/13/04

REVISIONS						SHEET NO.
NO.	BY:	DATE:	NO.	BY:	DATE:	TOTAL SHEETS
1			3			5-175
2			4			431