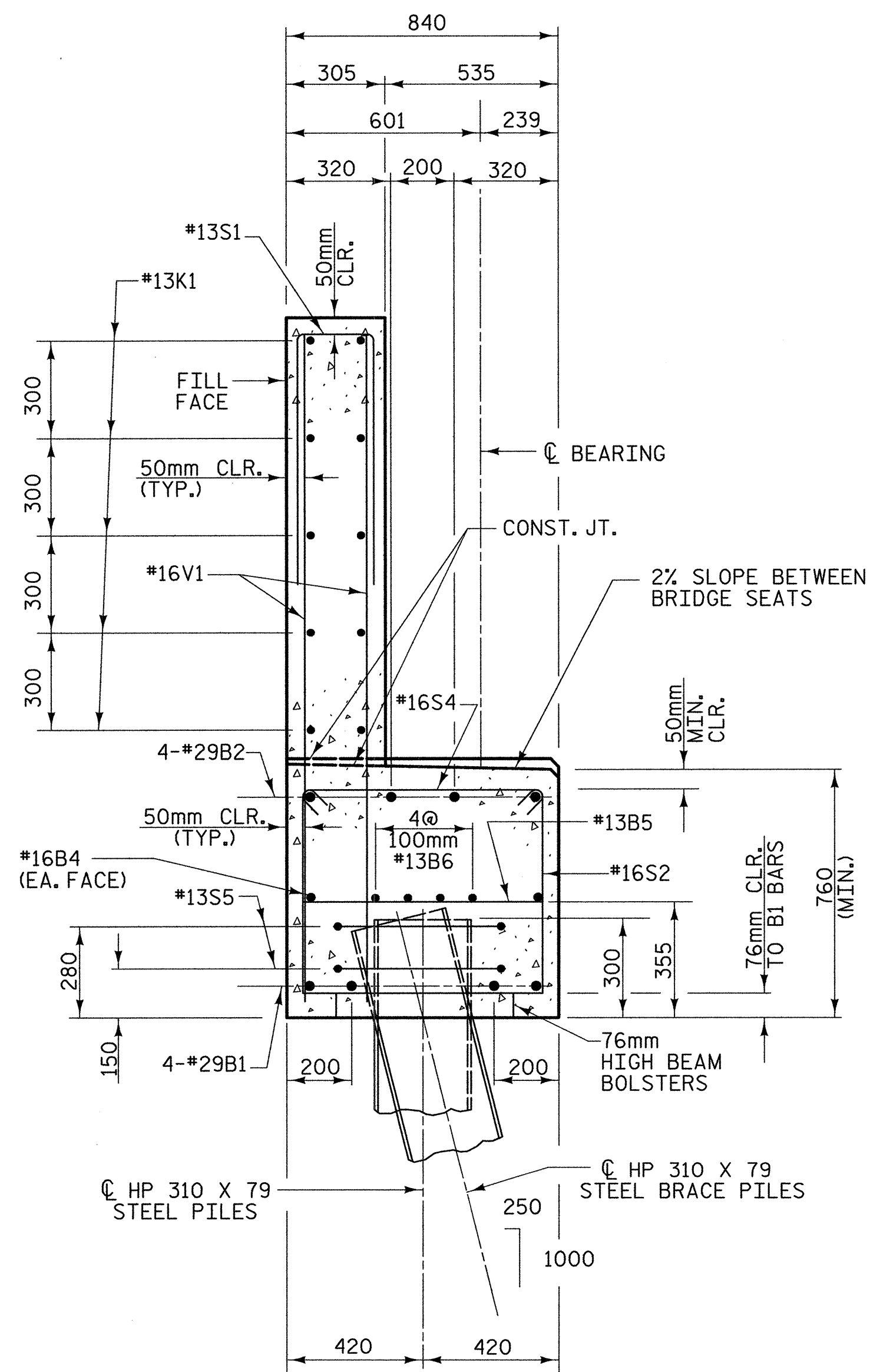


BAGGED STONE AND PIPE SHALL BE PLACED IMMEDIATELY AFTER COMPLETION OF END BENT EXCAVATION. PIPE MAY BE EITHER CONCRETE, CORRUGATED STEEL, CORRUGATED ALUMINUM ALLOY, OR CORRUGATED PLASTIC. PERFORATED PIPE WILL NOT BE ALLOWED.

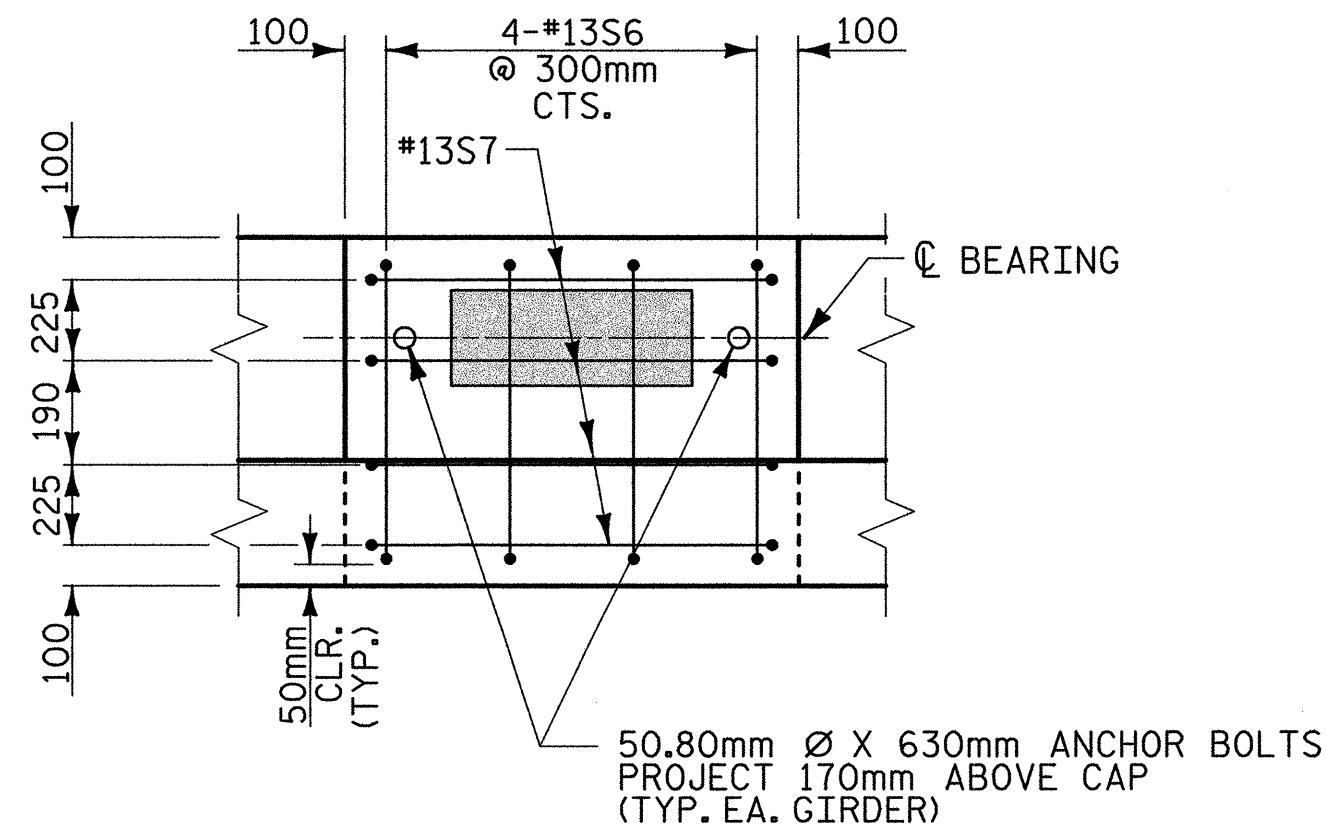
BAGGED STONE SHALL REMAIN IN PLACE UNTIL THE ENGINEER DIRECTS THAT IT BE REMOVED. THE CONTRACTOR SHALL REMOVE AND DISPOSE OF SILT ACCUMULATIONS AT BAGGED STONE WHEN SO DIRECTED BY THE ENGINEER. BAGS SHALL BE REMOVED AND REPLACED WHENEVER THE ENGINEER DETERMINES THAT THEY HAVE DETERIORATED AND LOST THEIR EFFECTIVENESS.

NO SEPARATE PAYMENT WILL BE MADE FOR THIS WORK AND THE ENTIRE COST OF THIS WORK SHALL BE INCLUDED IN THE UNIT CONTRACT PRICE FOR THE SEVERAL PAY ITEMS.

TEMPORARY DRAINAGE AT END BENT

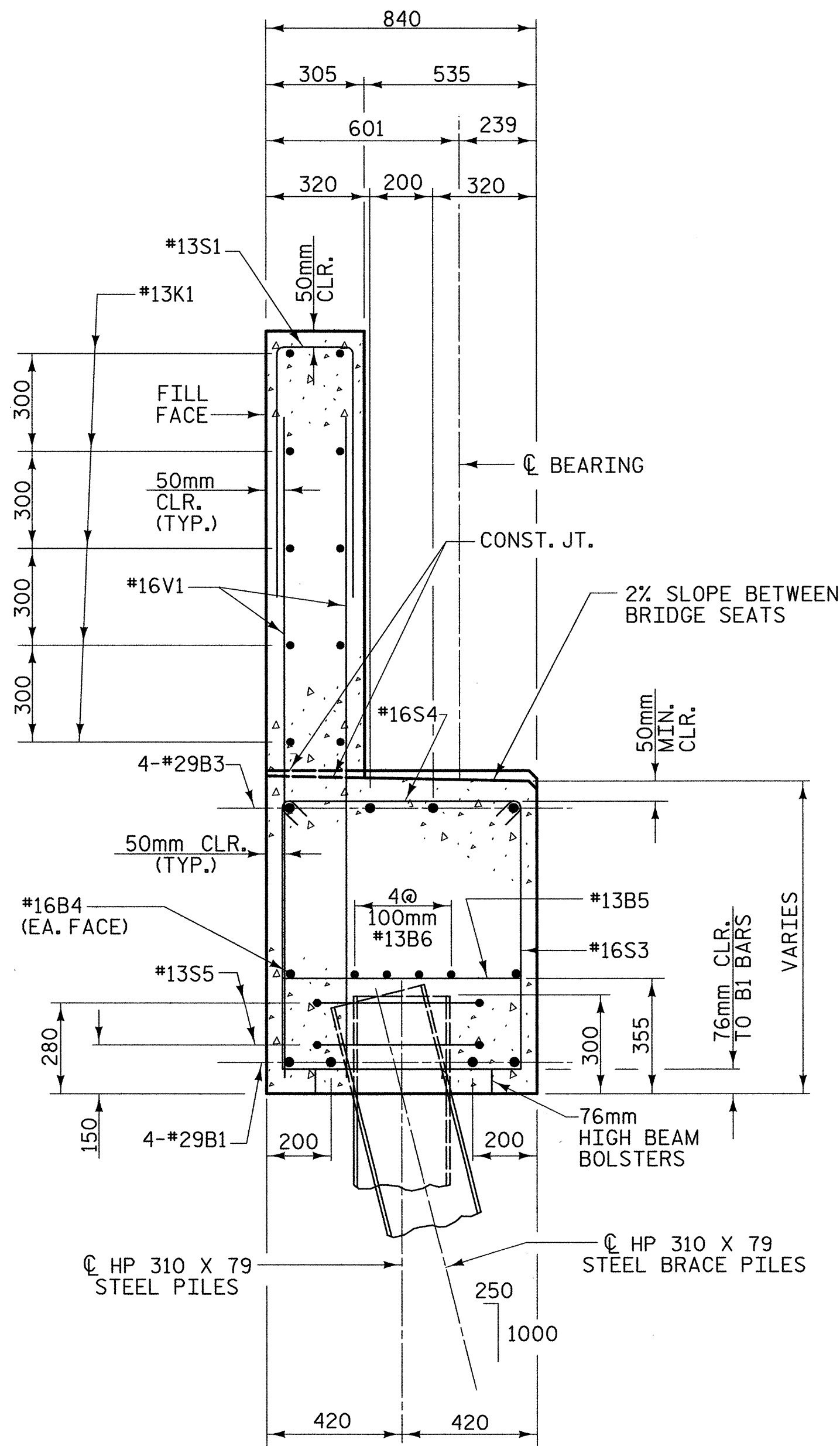


SECTION A-A



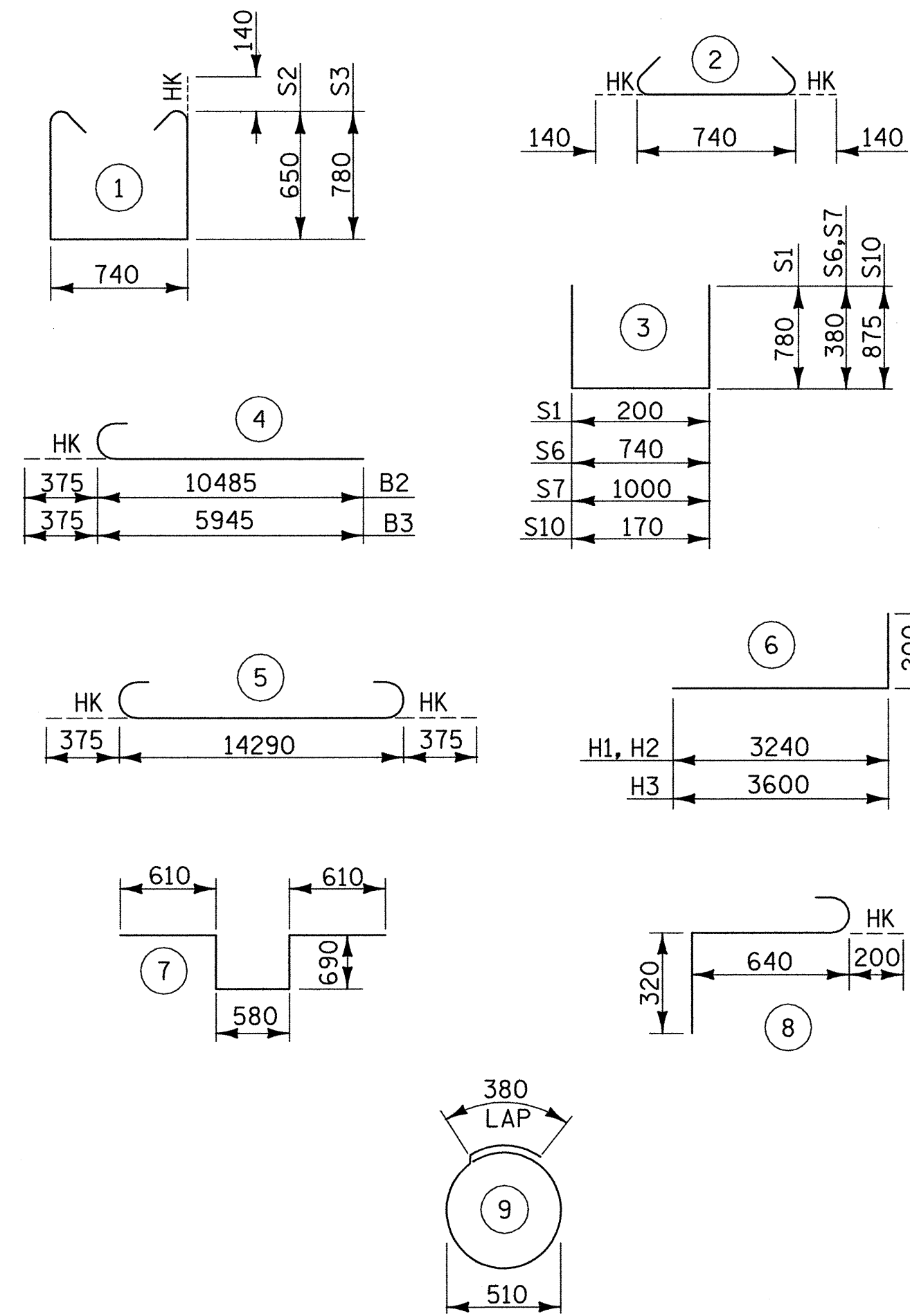
SEAT DETAIL

(TYP. SEATS 2 & 4)



SECTION B-B

BAR TYPES



ALL BAR DIMENSIONS ARE OUT TO OUT

BILL OF MATERIAL

FOR END BENT 1

BAR	NO.	SIZE	TYPE	LENGTH	WEIGHT
B1	4	#29	5	15040	239
B2	4	#29	4	10860	173
B3	4	#29	4	6320	100
B4	2	#16	STR	14280	44
B5	12	#13	STR	740	9
B6	8	#13	STR	7520	60
H1	12	#16	6	3440	64
H2	10	#13	6	3440	34
H3	22	#13	6	3800	83
K1	20	#13	STR	7520	149
S1	42	#13	3	1760	73
S2	32	#16	1	2320	115
S3	24	#16	1	2580	96
S4	56	#16	2	1020	89
S5	16	#13	9	1980	31
S6	8	#13	3	1500	12
S7	8	#13	3	1760	14
S8	1	#19	7	3180	7
S9	3	#19	8	1160	8
S10	4	#13	3	1920	8
V1	84	#16	STR	2040	266
V2	11	#16	STR	2420	41
V3	17	#13	STR	2420	41
V4	12	#16	STR	2680	50
V5	18	#13	STR	2680	48

TOTAL REINFORCING STEEL =	1854 kg
CLASS "A" CONCRETE - CU. METERS	
POUR 1	12.2 cu. m
POUR 2	10.0 cu. m
TOTAL	22.2 cu. m

PILE EXCAVATION IN SOIL - LIN. METERS	6
PILE EXCAVATION NOT IN SOIL - LIN. METERS	6
HP 310 X 79 STEEL PILES	
9 PILES REQUIRED - LIN. METERS	37

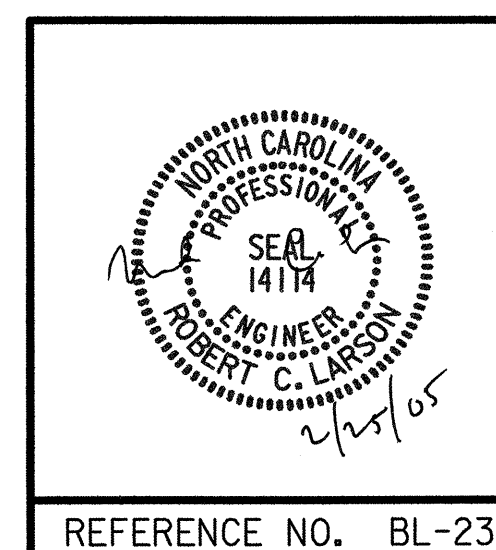


PROJECT NO. R-2552C
 JOHNSTON COUNTY
 STATION: 109+56.000 -L2LT- POT

SHEET 3 OF 3

STATE OF NORTH CAROLINA
 DEPARTMENT OF TRANSPORTATION
 RALEIGH

SUBSTRUCTURE END BENT 1 (LEFT LANE)



REVISIONS				SHEET NO.	
NO.	BY:	DATE:	NO.	BY:	DATE:
1			3		
2			4		

REFERENCE NO. BL-23

02/21/2005 07:28:02 AM n:\Structures\Site In\Left Lane\R2552C-SD.EI.03.dgn

DRAWN BY: J. P. SHERMAN DATE: 9/04
 CHECKED BY: R. C. LARSON DATE: 12/04