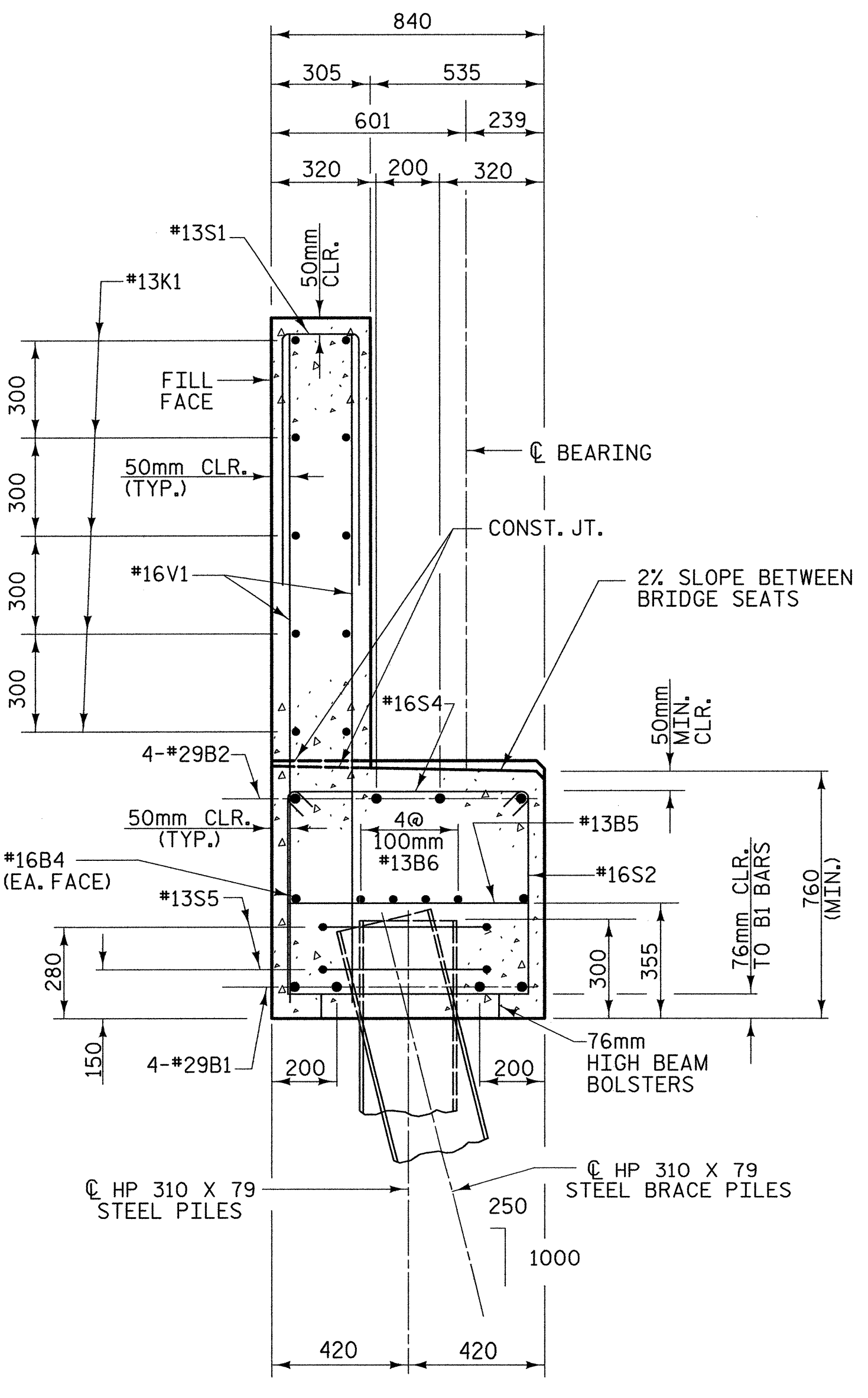
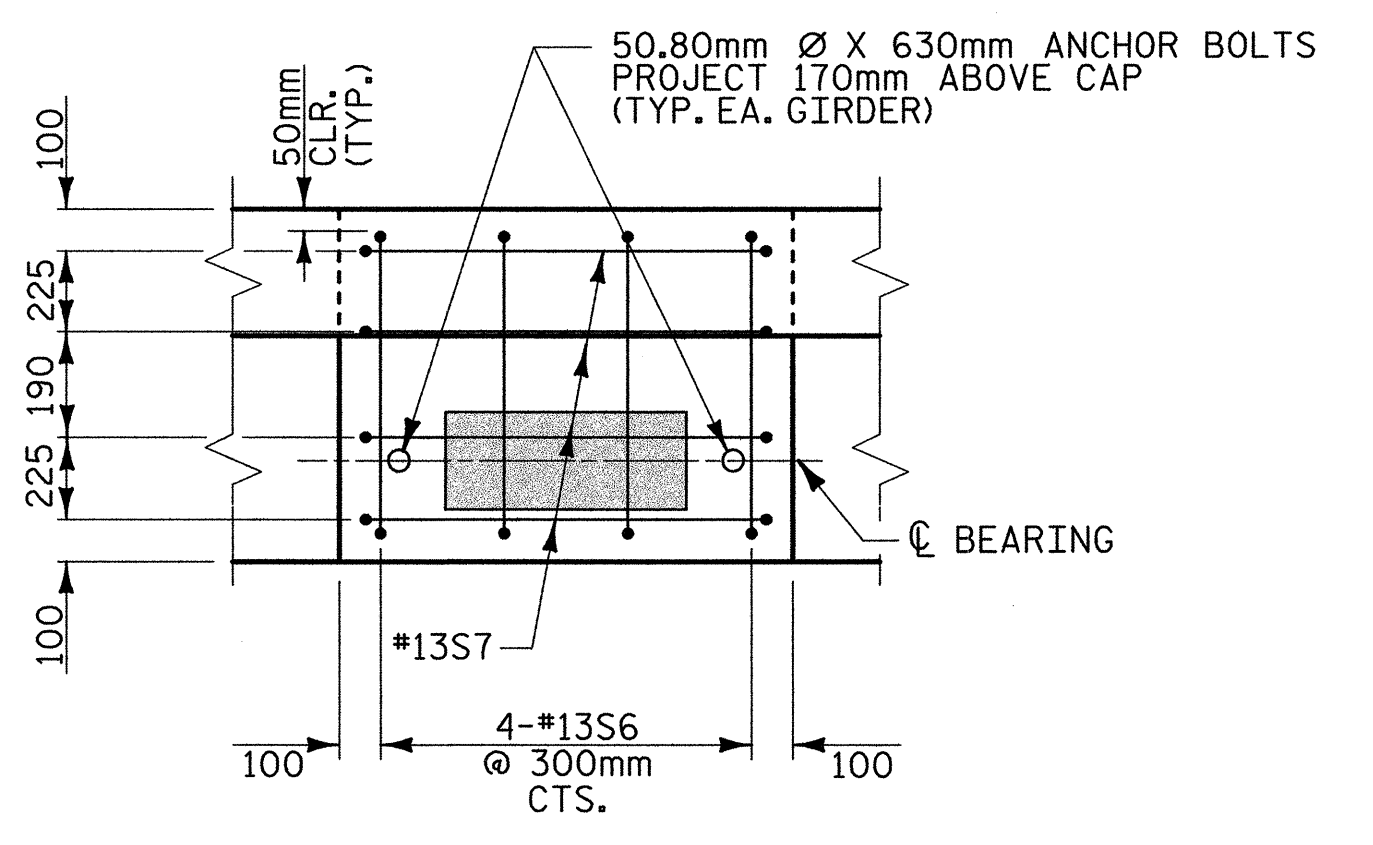


**\* POSITION OF PILE DURING WELDING.**

**PILE SPlice DETAILS**

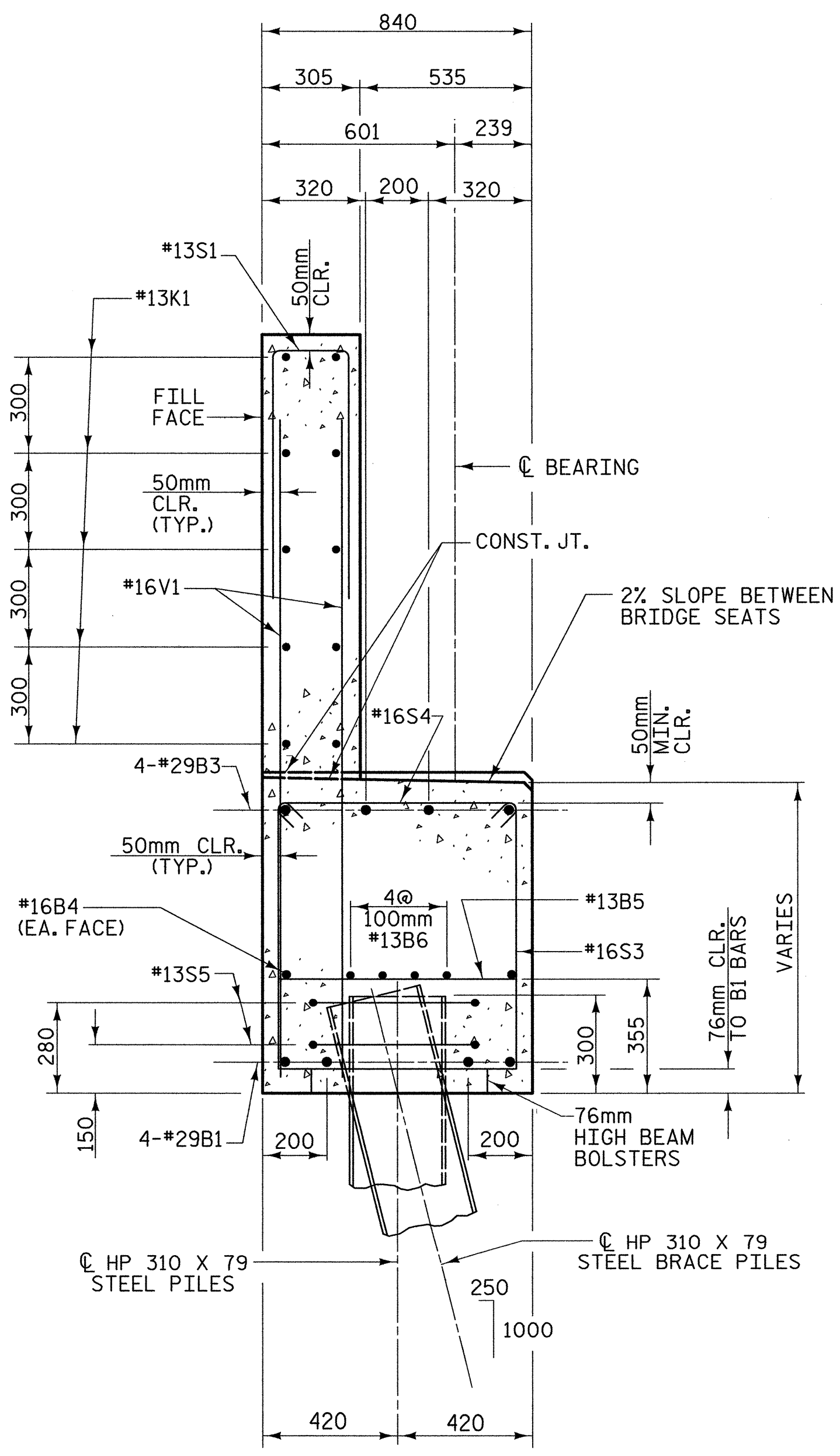


**SECTION A-A**

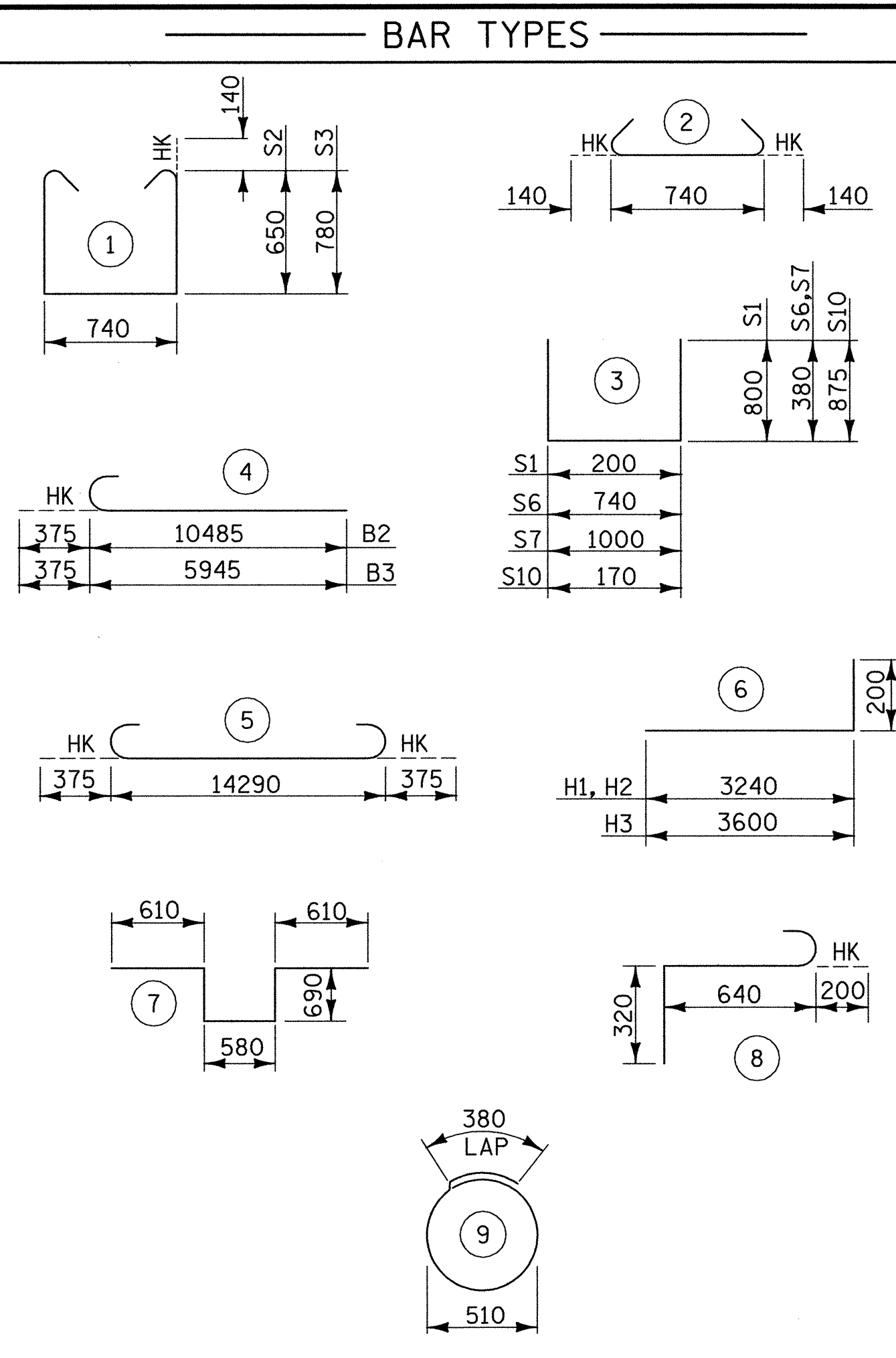


**SEAT DETAIL**

(TYP. SEATS 2 & 4)



**SECTION B-B**



ALL BAR DIMENSIONS ARE OUT TO OUT

**BILL OF MATERIAL**

FOR END BENT 2

BAR	NO.	SIZE	TYPE	LENGTH	WEIGHT
B1	4	#29	5	15040	239
B2	4	#29	4	10860	173
B3	4	#29	4	6320	100
B4	2	#16	STR	14280	44
B5	12	#13	STR	740	9
B6	8	#13	STR	7520	60
H1	12	#16	6	3440	64
H2	10	#13	6	3440	34
H3	22	#13	6	3800	83
K1	20	#13	STR	7520	149
S1	42	#13	3	1800	75
S2	32	#16	1	2320	115
S3	24	#16	1	2580	96
S4	56	#16	2	1020	89
S5	16	#13	9	1980	31
S6	8	#13	3	1500	12
S7	8	#13	3	1760	14
S8	1	#19	7	3180	7
S9	3	#19	8	1160	8
S10	4	#13	3	1920	8
V1	84	#16	STR	2040	266
V2	11	#16	STR	2440	42
V3	17	#13	STR	2440	41
V4	12	#16	STR	2700	50
V5	18	#13	STR	2700	48
TOTAL REINFORCING STEEL =					1857 kg
CLASS "A" CONCRETE - CU. METERS					
POUR 1				12.2	cu. m
POUR 2				10.0	cu. m
TOTAL				22.2	cu. m
HP 310 X 79 STEEL PILES					
9 PILES REQUIRED - LIN. METERS				120	



PROJECT NO. R-2552C

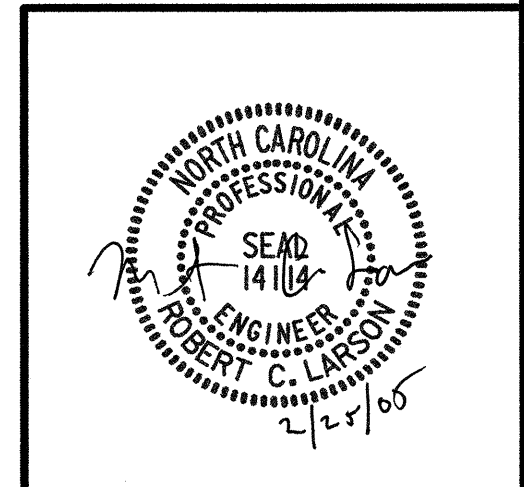
JOHNSTON COUNTY

STATION: 109+56.000 -L2LT- POT

SHEET 3 OF 3

STATE OF NORTH CAROLINA  
DEPARTMENT OF TRANSPORTATION  
RALEIGH

**SUBSTRUCTURE  
END BENT 2  
(LEFT LANE)**



REVISIONS				SHEET NO.	
NO.	BY:	DATE:	NO.	BY:	DATE:
1			3		
2			4		

TOTAL SHEETS: 431

REFERENCE NO. BL-36

02/21/2005 07:26:51 AM F:\A\Structures\She N\Left Lanes\R2552C-SD-EZ.dgn

DRAWN BY: J.P. SHERMAN DATE: 9/04  
CHECKED BY: R.C. LARSON DATE: 12/04