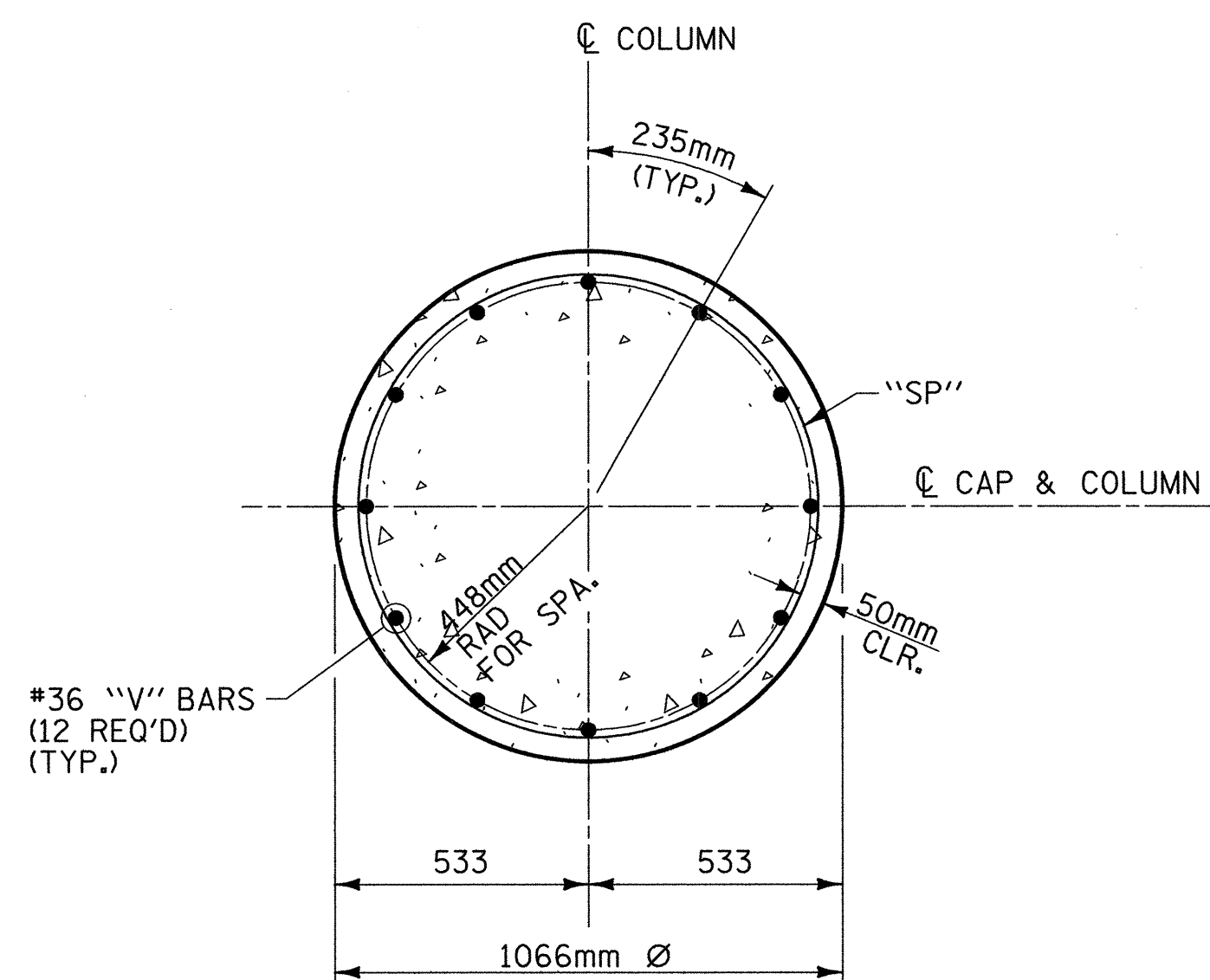


SECTION A-A

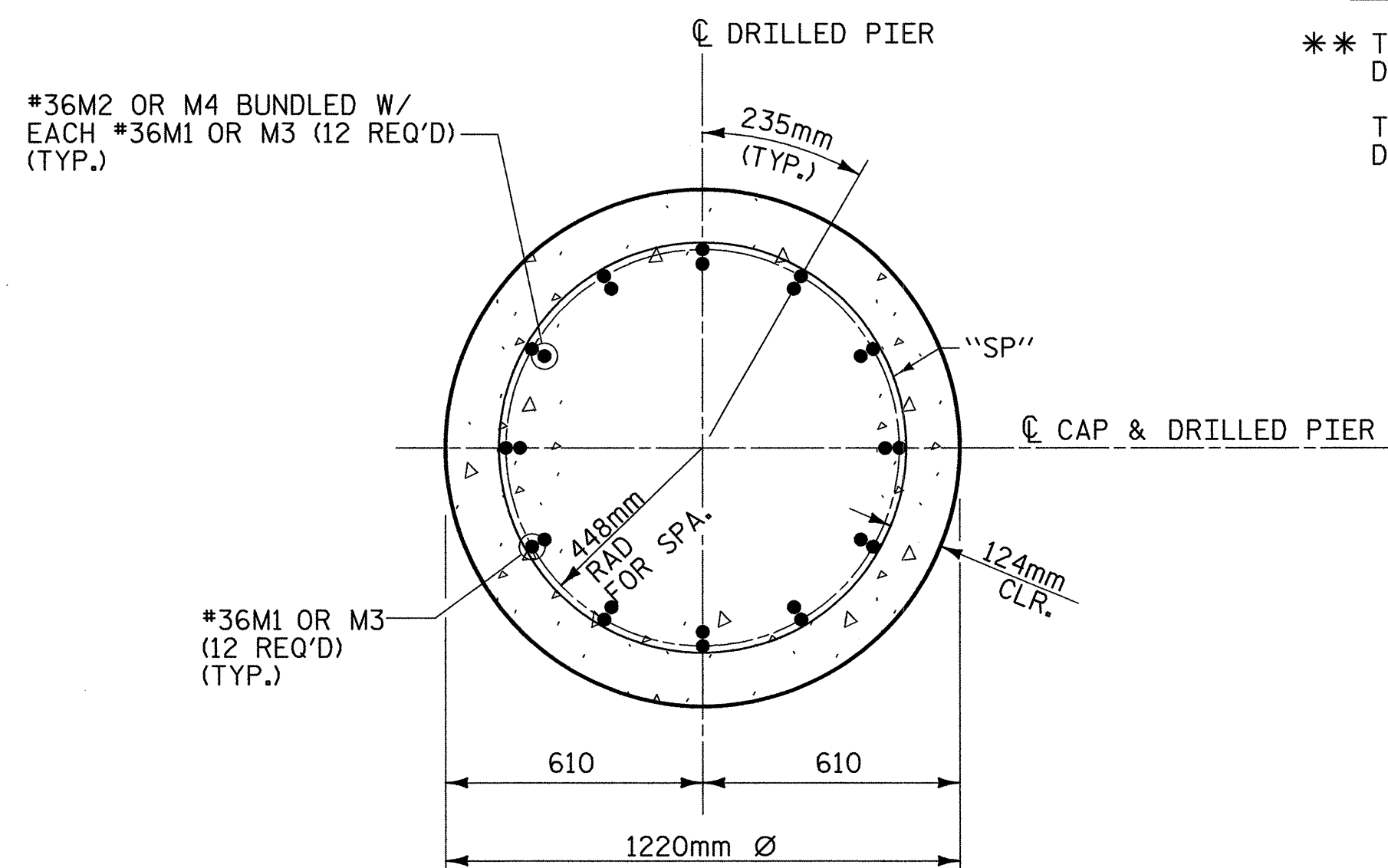
NOTES:

- STIRRUPS IN THE CAP MAY BE SHIFTED AS NECESSARY TO CLEAR ANCHOR BOLTS.
- HOOKS ON "V" BARS MAY BE TURNED AS NECESSARY FOR PLACING REINFORCING STEEL.
- THE CONTRACTOR'S ATTENTION IS CALLED TO THE FACT THAT THE LONGITUDINAL REINFORCEMENT FOR THE DRILLED PIERS IS DETAILED WITH ONE METER OF EXTRA LENGTH.
- ALL STEEL IN THE DRILLED PIERS IS INCLUDED IN THE PAY ITEMS FOR "REINFORCING STEEL" AND "SPIRAL COLUMN REINFORCING STEEL".



SECTION THRU COLUMN

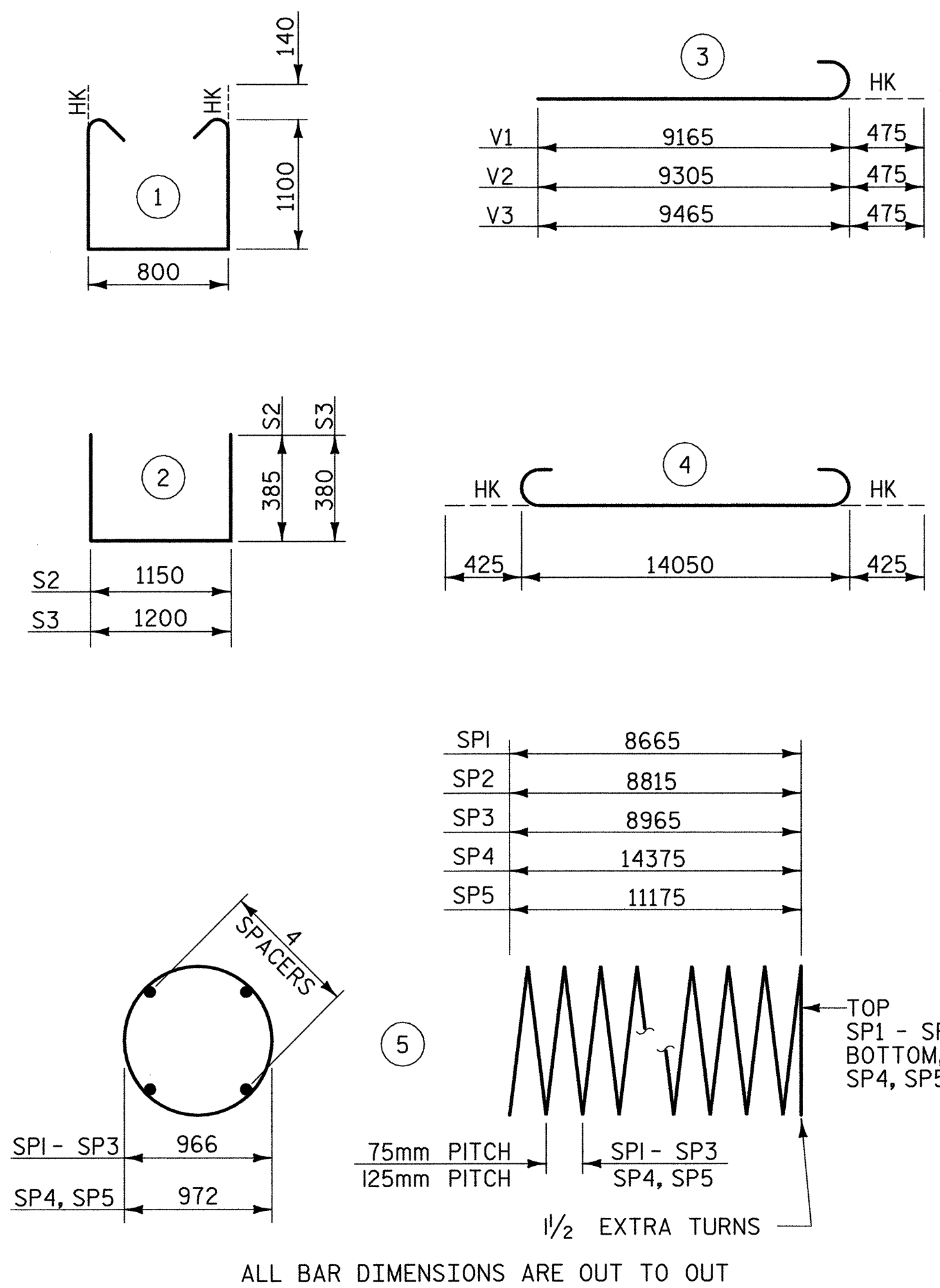
(ALL COLUMNS SIMILAR)
(SEE ELEVATION FOR BAR MARKS)



SECTION THRU DRILLED PIER

(ALL DRILLED PIERS SIMILAR)
(SEE ELEVATION FOR BAR MARKS)

BAR TYPES



- ** THE SP1 - SP3 SPIRAL REINFORCING STEEL SHALL BE W20 OR D-20 COLD DRAWN WIRE OR #13 PLAIN OR DEFORMED BAR.
- THE SP4 & SP5 SPIRAL REINFORCING STEEL SHALL BE W31 OR D-31 COLD DRAWN WIRE OR #16 PLAIN OR DEFORMED BAR.

ALL BAR DIMENSIONS ARE OUT TO OUT

BILL OF MATERIAL

FOR BENT 1					
BAR	NO.	SIZE	TYPE	LENGTH	WEIGHT
B1	6	#32	STR	14100	542
B2	6	#32	4	14900	573
B3	6	#19	STR	14100	189
M1	24	#36	STR	17700	3359
M2	24	#36	STR	15240	2892
M3	12	#36	STR	14500	1376
M4	12	#36	STR	12040	1142
S1	76	#16	1	3280	387
S2	18	#13	2	1920	34
S3	45	#13	2	1960	88
V1	12	#36	3	9640	915
V2	12	#36	3	9780	928
V3	12	#36	3	9940	943
TOTAL REINFORCING STEEL =					13368 kg
SP1	1	**	5	345645	344
SP2	1	**	5	351629	350
SP3	1	**	5	357612	355
SP4	2	**	5	345325	1072
SP5	1	**	5	268452	417
SPIRAL COLUMN REINFORCING STEEL =					2538 kg
CLASS "A" CONCRETE - CU. METERS					
POUR 2 (COLUMNS)					23.4 C.M.
POUR 3 (CAP)					23.1 C.M.
TOTAL					46.5 C.M.
DRILLED PIER @ BENT 1					
1220mm DIA. DRILLED PIERS IN SOIL =					31.3 LIN M.
1220mm DIA. DRILLED PIERS NOT IN SOIL =					8.7 LIN M.
SID INSPECTION =					1 EA.
SPT TESTING =					2 EA.
CROSSHOLE SONIC LOGGING =					1 EA.
CSL TUBES =					170.2 LIN M.
DRILLED PIER CONC. (FOR INFORMATION ONLY) =					46.8 C.M.

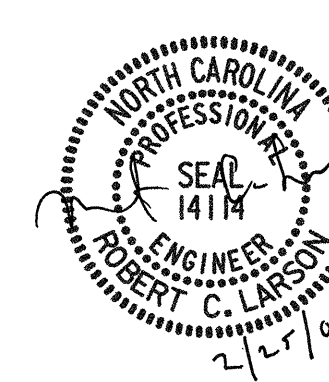


PROJECT NO. R-2552C
JOHNSTON COUNTY
 STATION: 110+37.000 -L2RT- POC

SHEET 2 OF 2

STATE OF NORTH CAROLINA
 DEPARTMENT OF TRANSPORTATION
 RALEIGH

**SUBSTRUCTURE
 BENT 1
 (RIGHT LANE)**



REVISIONS						SHEET NO.
NO.	BY:	DATE:	NO.	BY:	DATE:	TOTAL SHEETS
1			3			431
2			4			

REFERENCE NO. BR-27