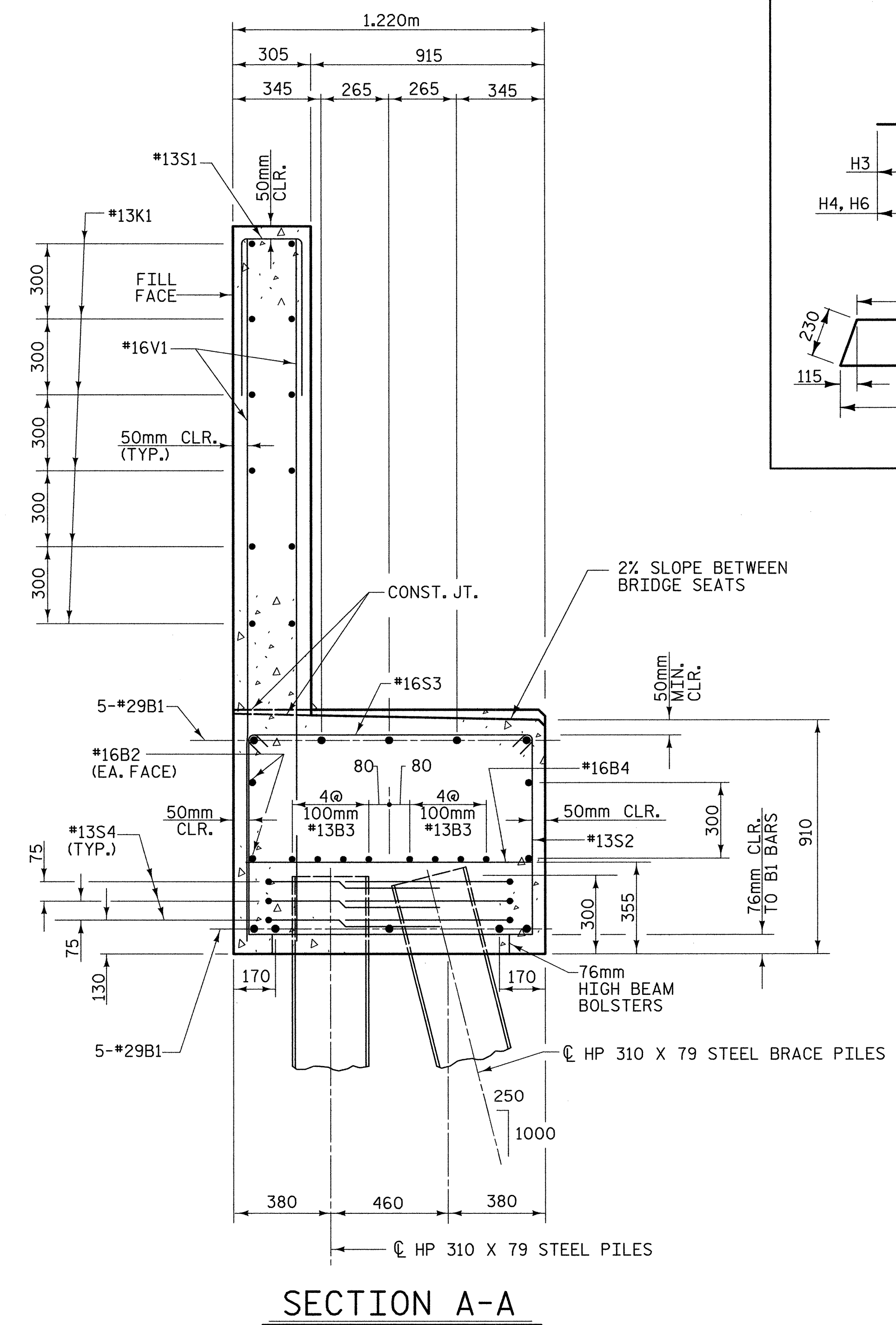
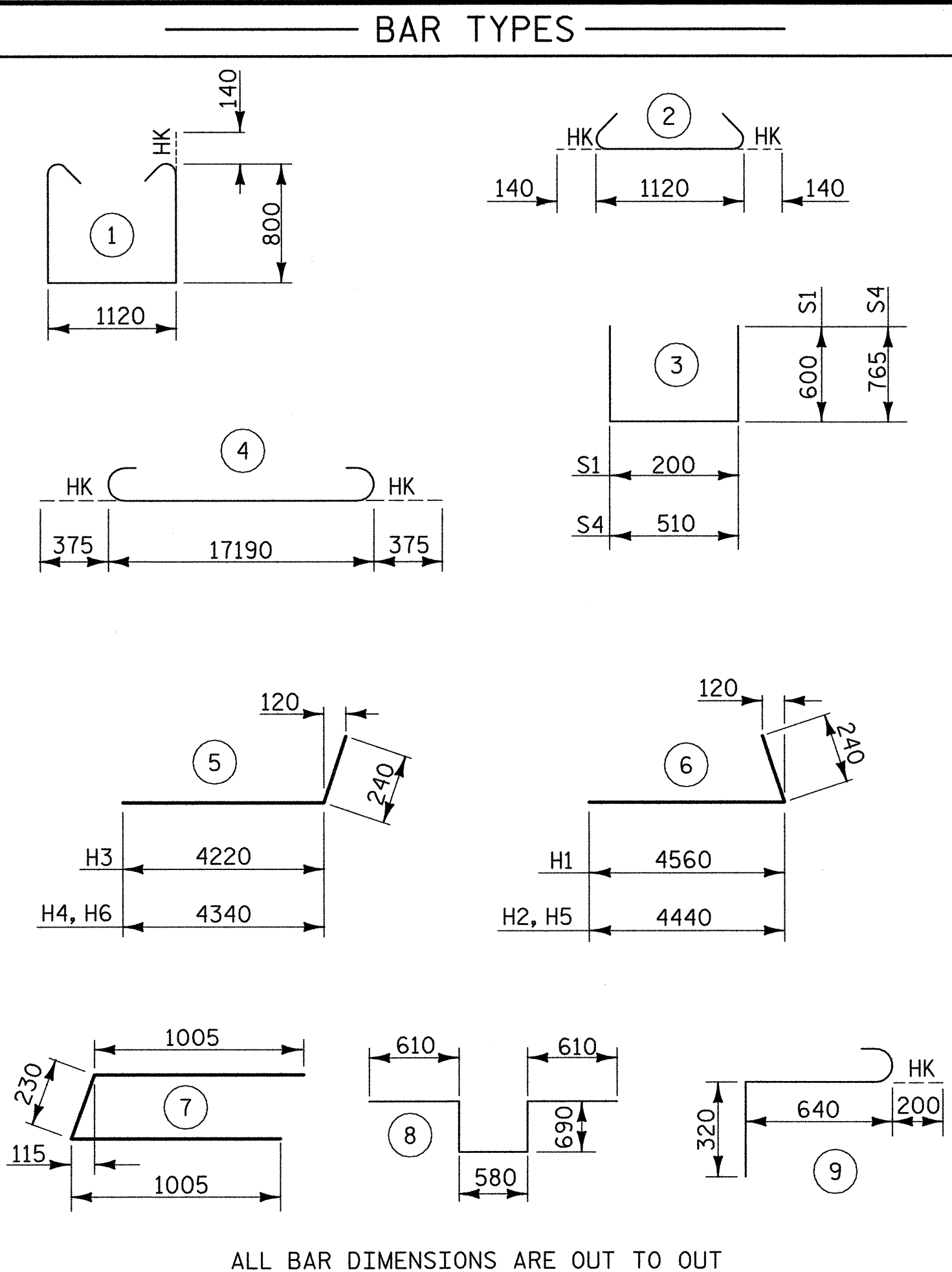


\* POSITION OF PILE DURING WELDING.  
**PILE SPLICE DETAILS**

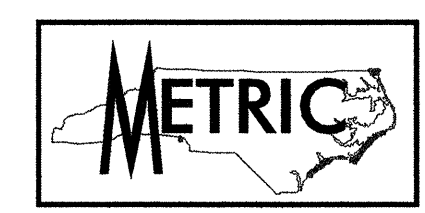


**SECTION A-A**



ALL BAR DIMENSIONS ARE OUT TO OUT

BILL OF MATERIAL					
FOR END BENT 2					
BAR	NO.	SIZE	TYPE	LENGTH	WEIGHT
B1	10	#29	4	17940	713
B2	4	#16	STR	17200	107
B3	16	#13	STR	8980	143
B4	14	#13	STR	1120	16
H1	12	#13	6	4800	57
H2	8	#13	6	4680	37
H3	12	#13	5	4460	53
H4	8	#13	5	4580	36
H5	4	#16	6	4680	29
H6	4	#16	5	4580	28
K1	24	#13	STR	8980	214
S1	50	#13	3	1400	70
S2	68	#16	1	3000	317
S3	68	#16	2	1400	148
S4	42	#13	3	2040	85
S5	4	#13	7	2240	9
S6	2	#19	8	3180	14
S7	6	#19	9	1160	16
V1	100	#16	STR	2740	425
V2	10	#13	STR	3140	31
V3	30	#13	STR	1940	58
V4	56	#16	STR	2000	174
V5	10	#13	STR	3080	31
V6	26	#13	STR	1880	49
V7	54	#16	STR	1940	163
TOTAL REINFORCING STEEL =				3023	kg
CLASS "A" CONCRETE - CU. METERS					
POUR 1				22.4	C. M.
POUR 2				15.7	C. M.
TOTAL				38.1	C. M.
HP 310 X 79 STEEL PILES					
16 PILES REQUIRED - LIN. METERS				240	

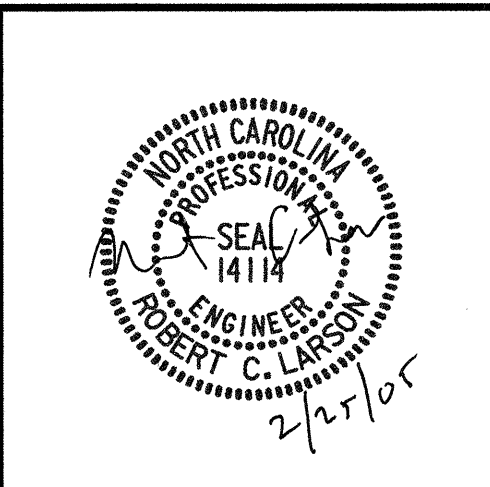


PROJECT NO. R-2552C  
JOHNSTON COUNTY  
 STATION: 110+37.000 -L2RT- POC

SHEET 3 OF 3

STATE OF NORTH CAROLINA  
 DEPARTMENT OF TRANSPORTATION  
 RALEIGH

**SUBSTRUCTURE  
 END BENT 2  
 (RIGHT LANE)**



REVISIONS				SHEET NO.	
NO.	BY:	DATE:	NO.	BY:	DATE:
1			3		
2			4		

REFERENCE NO. BR-34

02/21/2005 12:59:54 PM G:\p\p\01\2004\23\01R-2552\STRUCTURES\She I\Right Lona\R2552C.SD.E2.03.dgn

DRAWN BY : W. B. ALLEN DATE : 11/04  
 CHECKED BY : R. C. LARSON DATE : 1/05