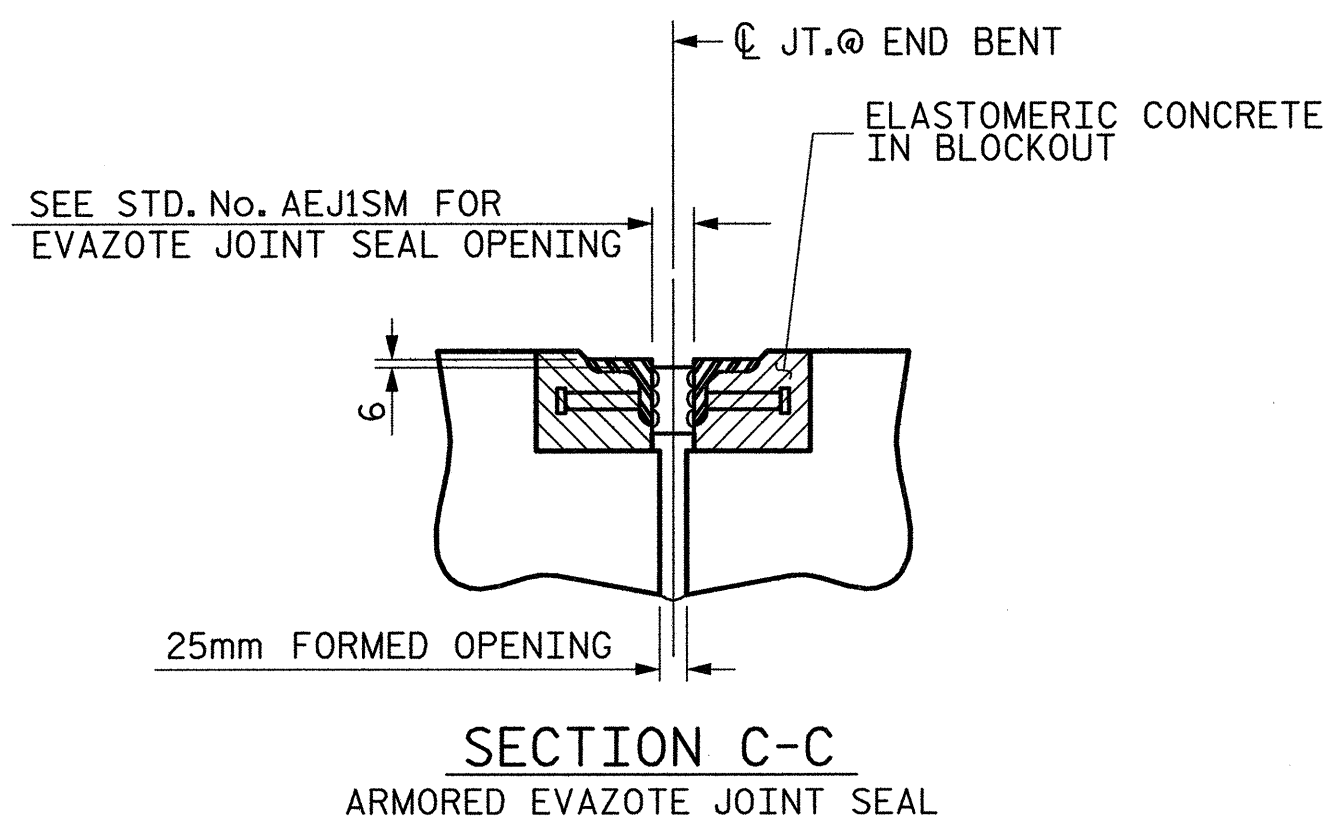
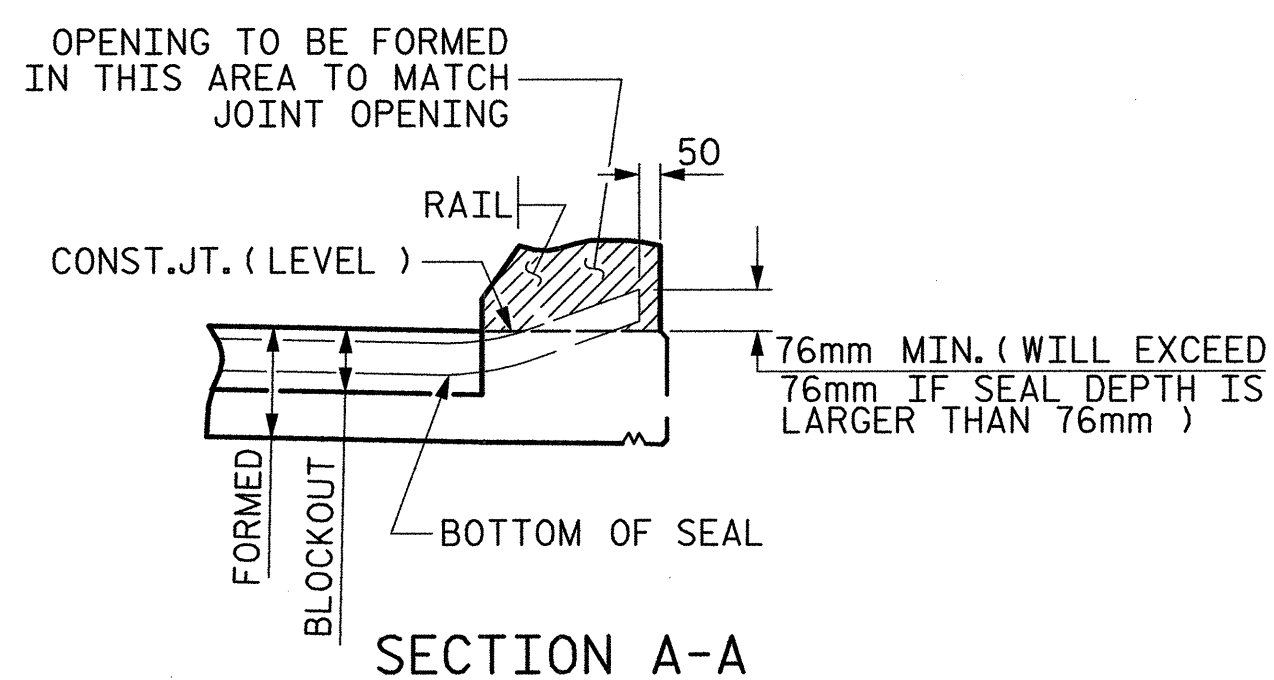


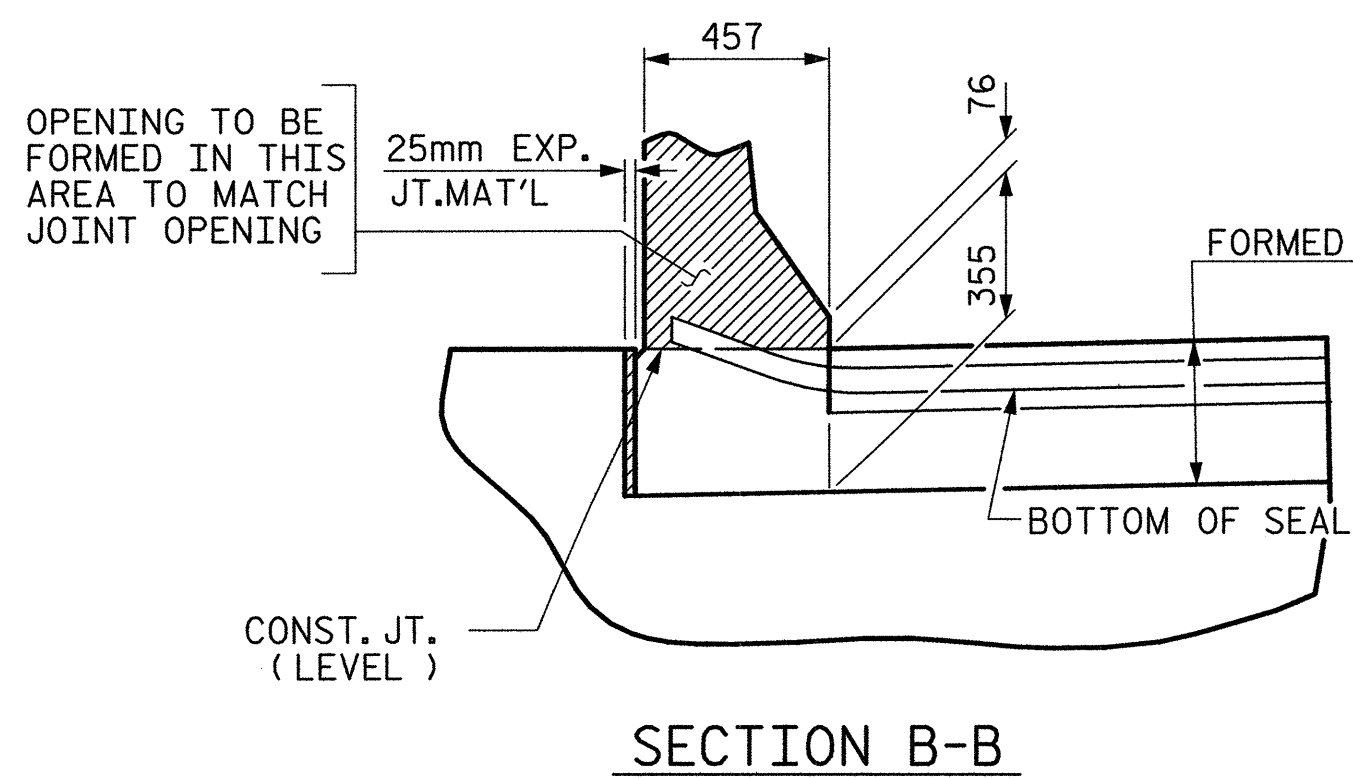
PLAN



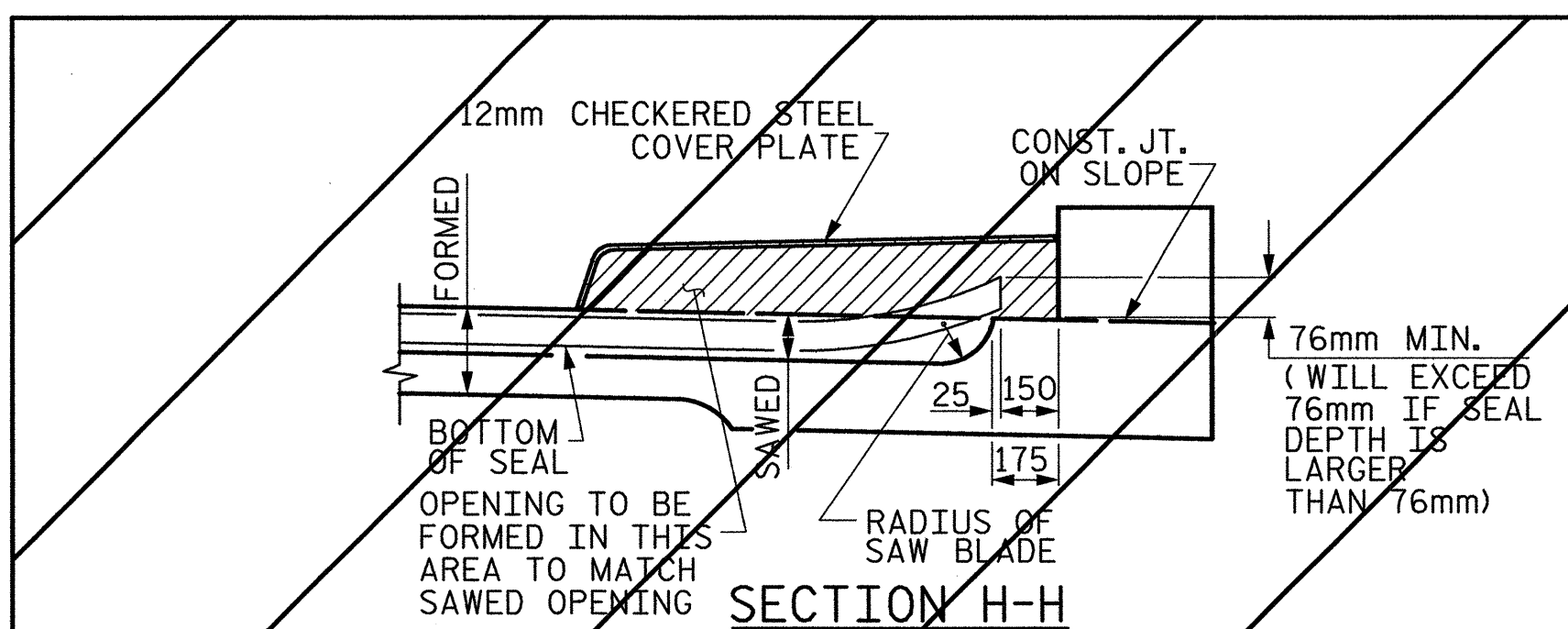
SECTION C-C
ARMORED EVAZOTE JOINT SEAL



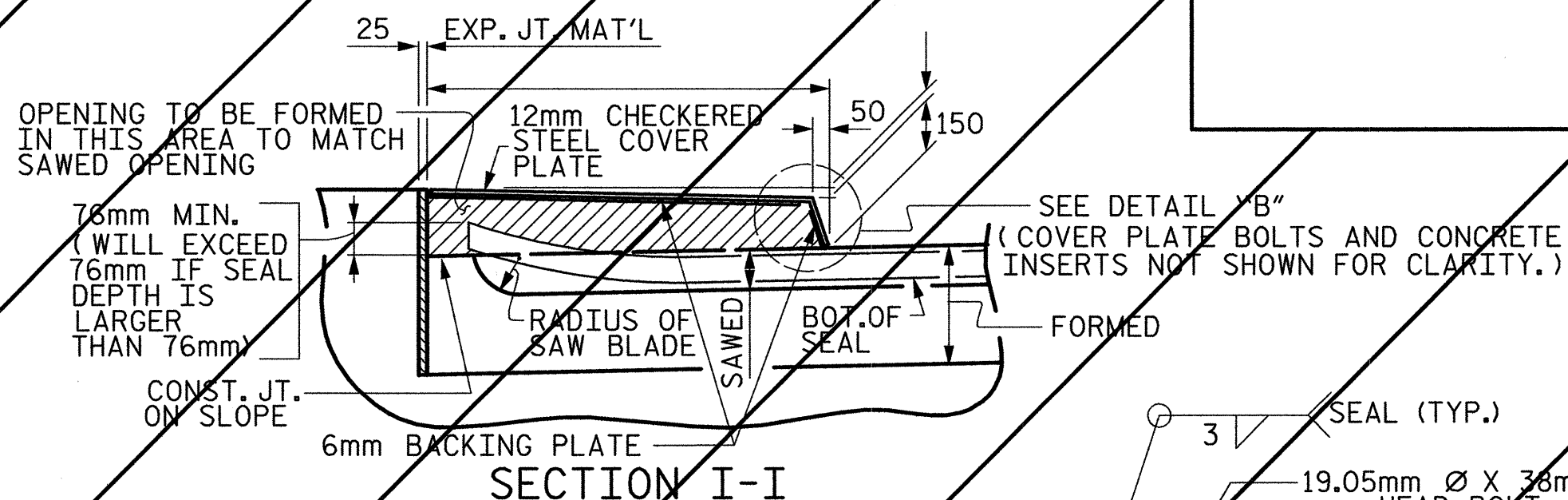
SECTION A-A



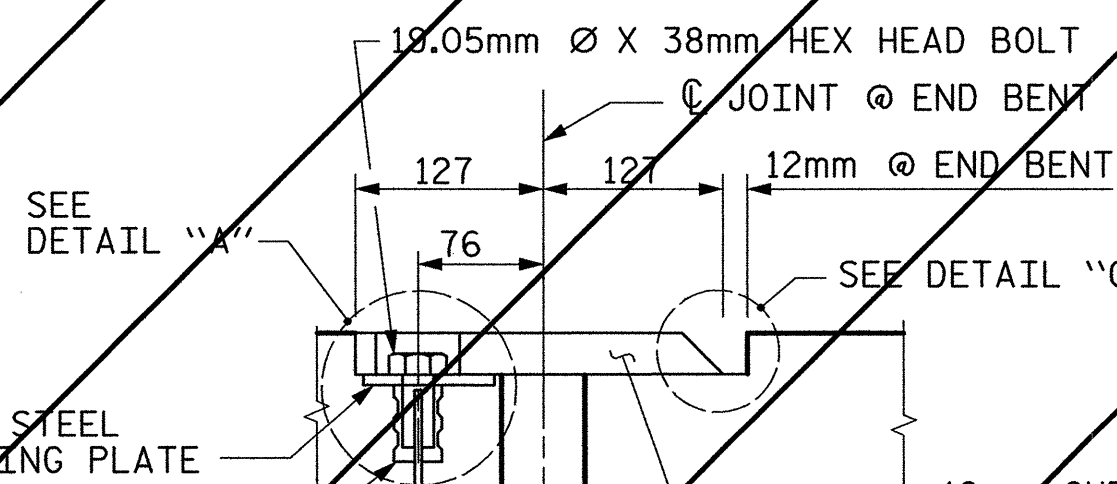
SECTION B-B
JOINT SEAL DETAILS @ END BENT



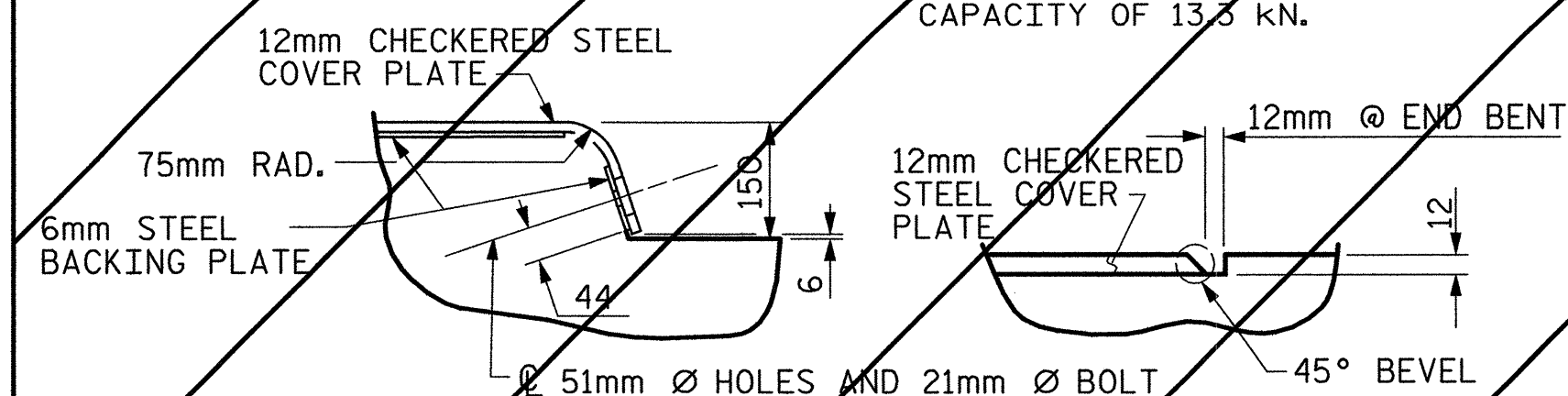
SECTION H-H



SECTION I-I



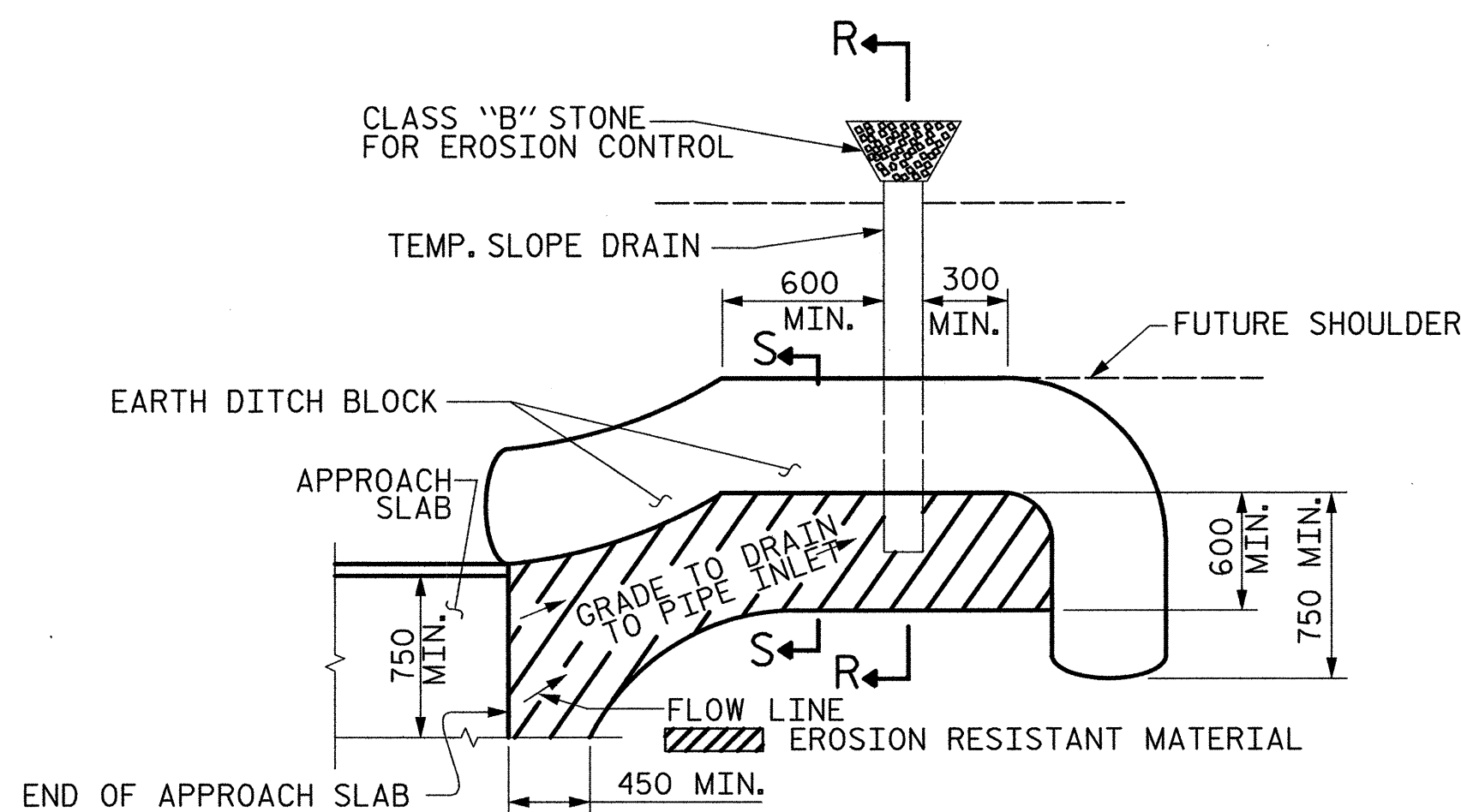
SECTION K-K



DETAIL "B"

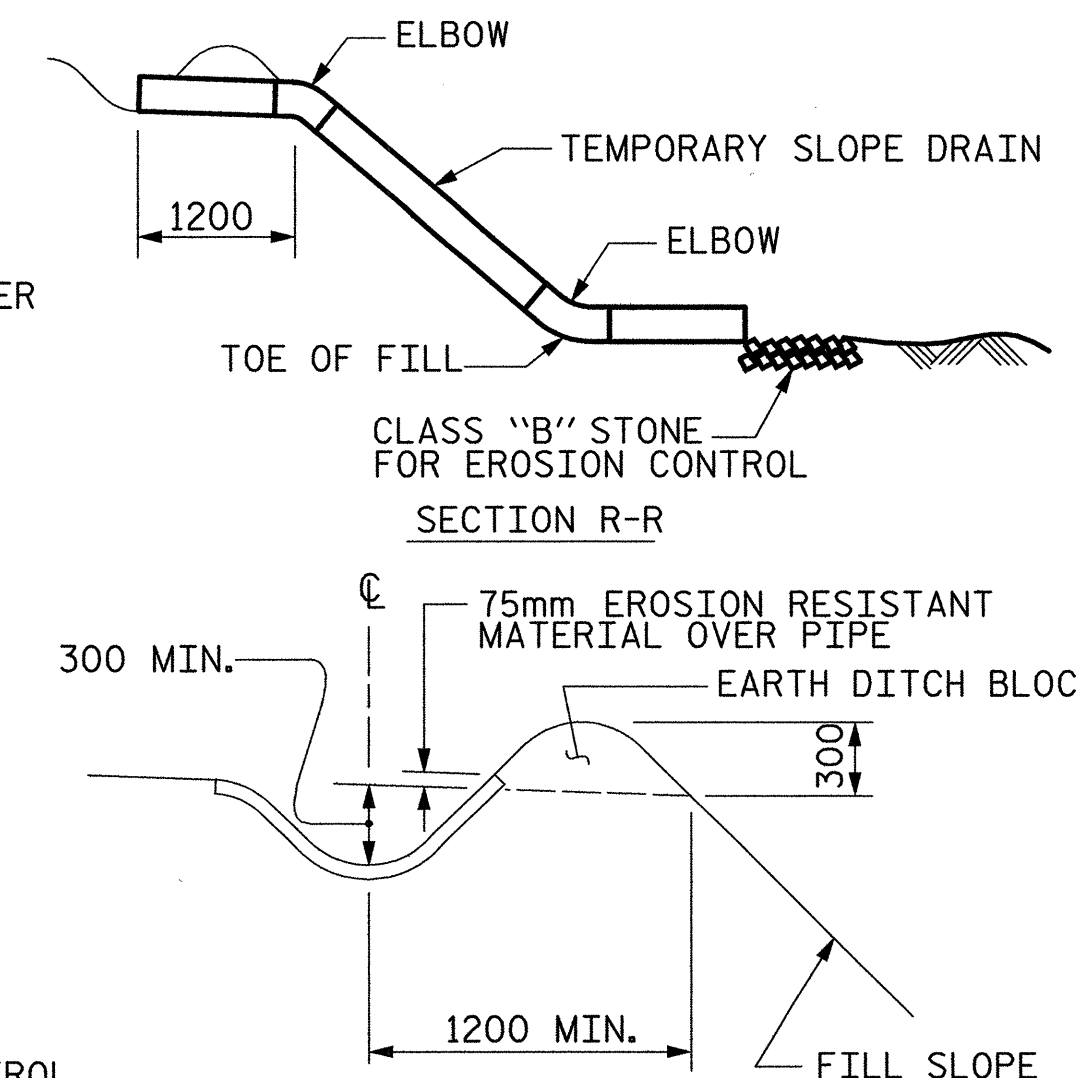
DETAIL "C"

JOINT SEAL DETAILS @ END BENT
(FOR SIDEWALK)

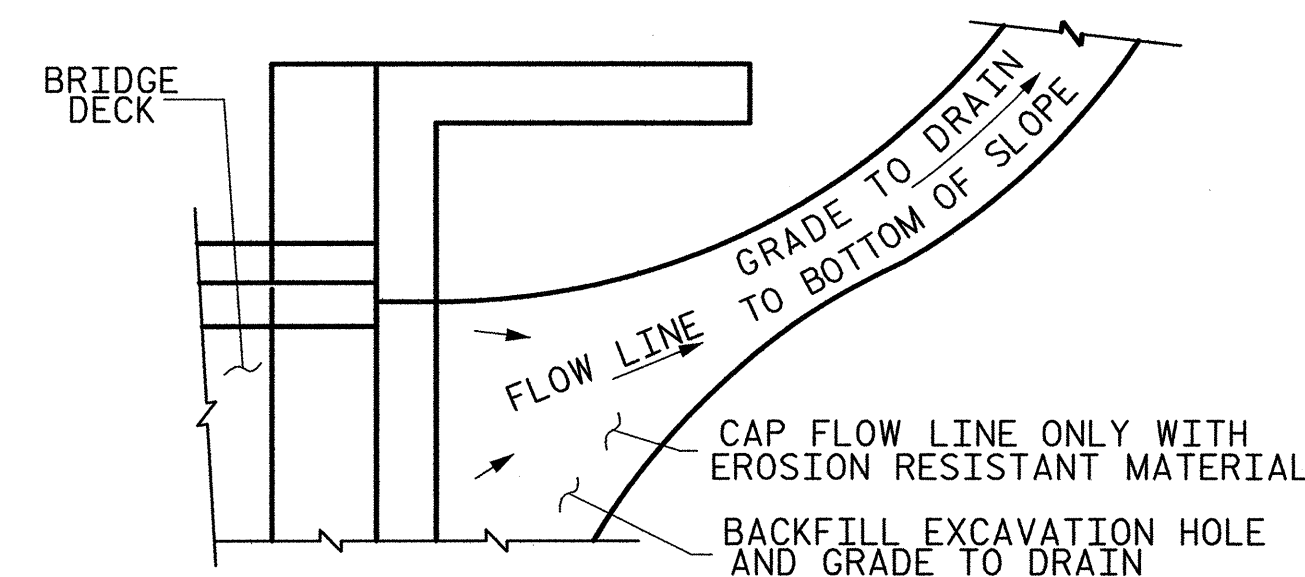


PLAN VIEW

TEMPORARY BERM AND SLOPE DRAIN DETAILS

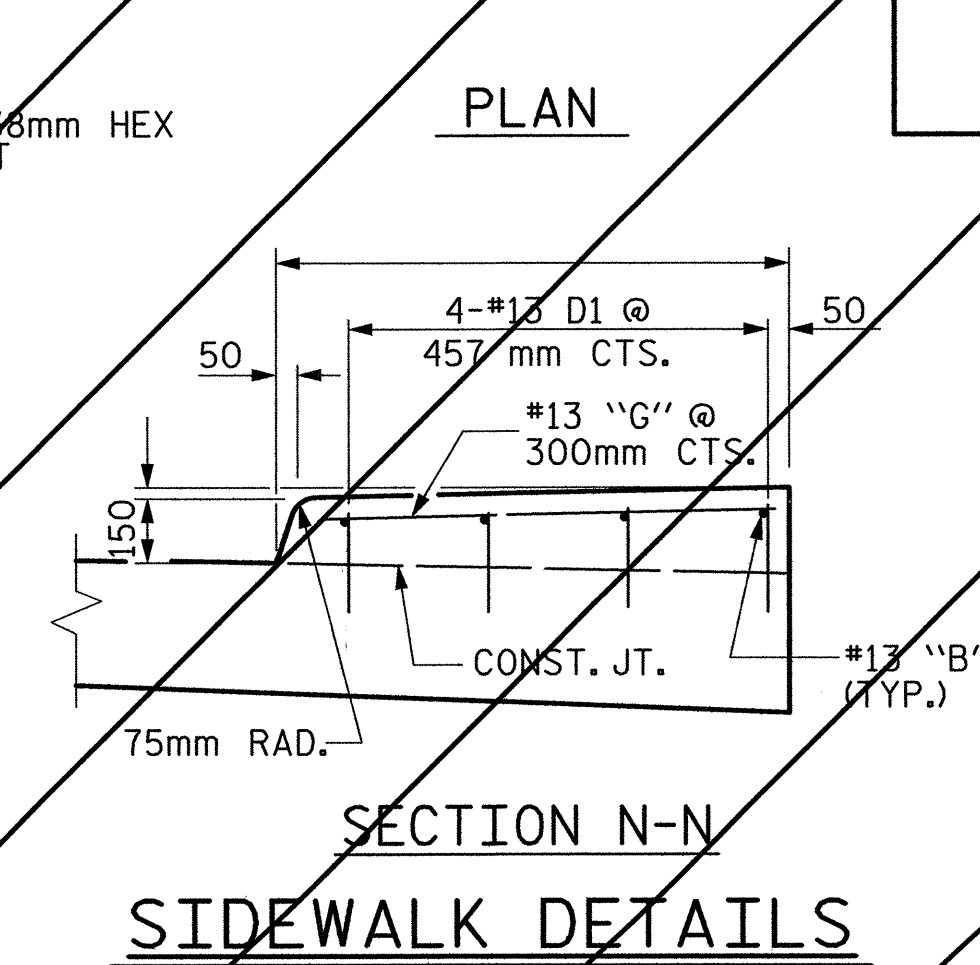


SECTION S-S



NOTE: IF THE APPROACH SLAB IS NOT CONSTRUCTED IMMEDIATELY AFTER THE BACKFILLING OF THE END BENT EXCAVATION, GRADE TO DRAIN TO THE BOTTOM OF THE SLOPE AND PROVIDE EROSION RESISTANT MATERIAL, SUCH AS FIBERGLASS ROVING OR AS DIRECTED BY THE ENGINEER TO PREVENT SOIL EROSION AND TO PROTECT THE AREA ADJACENT TO THE STRUCTURE. THE CONTRACTOR WILL BE REQUIRED TO REMOVE THESE MATERIALS PRIOR TO CONSTRUCTION OF THE APPROACH SLAB.

TEMPORARY DRAINAGE DETAIL



SECTION N-N

SIDEWALK DETAILS

PROJECT NO. R-2552C
JOHNSTON COUNTY
STATION: 110+37.000 -L2RT- POC

SHEET 4 OF 4

STATE OF NORTH CAROLINA
DEPARTMENT OF TRANSPORTATION
RALEIGH

STANDARD
BRIDGE APPROACH
SLAB DETAILS
(RIGHT LANE)

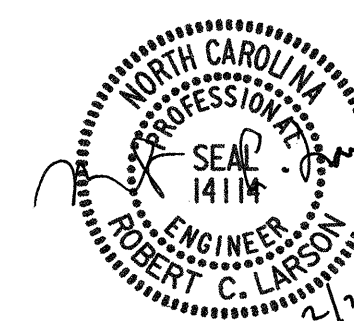
STD. NO. BAS10SM

REVISIONS

NO.	BY:	DATE:	NO.	BY:	DATE:
1			3		
2			4		

SHEET NO.
5-265
TOTAL SHEETS
431

THIS STANDARD DRAWING REVIEWED & ADOPTED FOR USE AT THE REFERENCED LOCATION BY THE UNDERSIGNED:



PLANS PREPARED BY:



REFERENCE NO. BR-40

ASSEMBLED BY: W. B. ALLEN DATE: 10/04
CHECKED BY: R. C. LARSON DATE: 1/05
DRAWN BY: FCJ 11/88 REV. 8/16/99 RAL/LES
CHECKED BY: ARB 11/88 REV. 10/17/00 RWW/LES
REV. 5/17/03 RWW/JTE