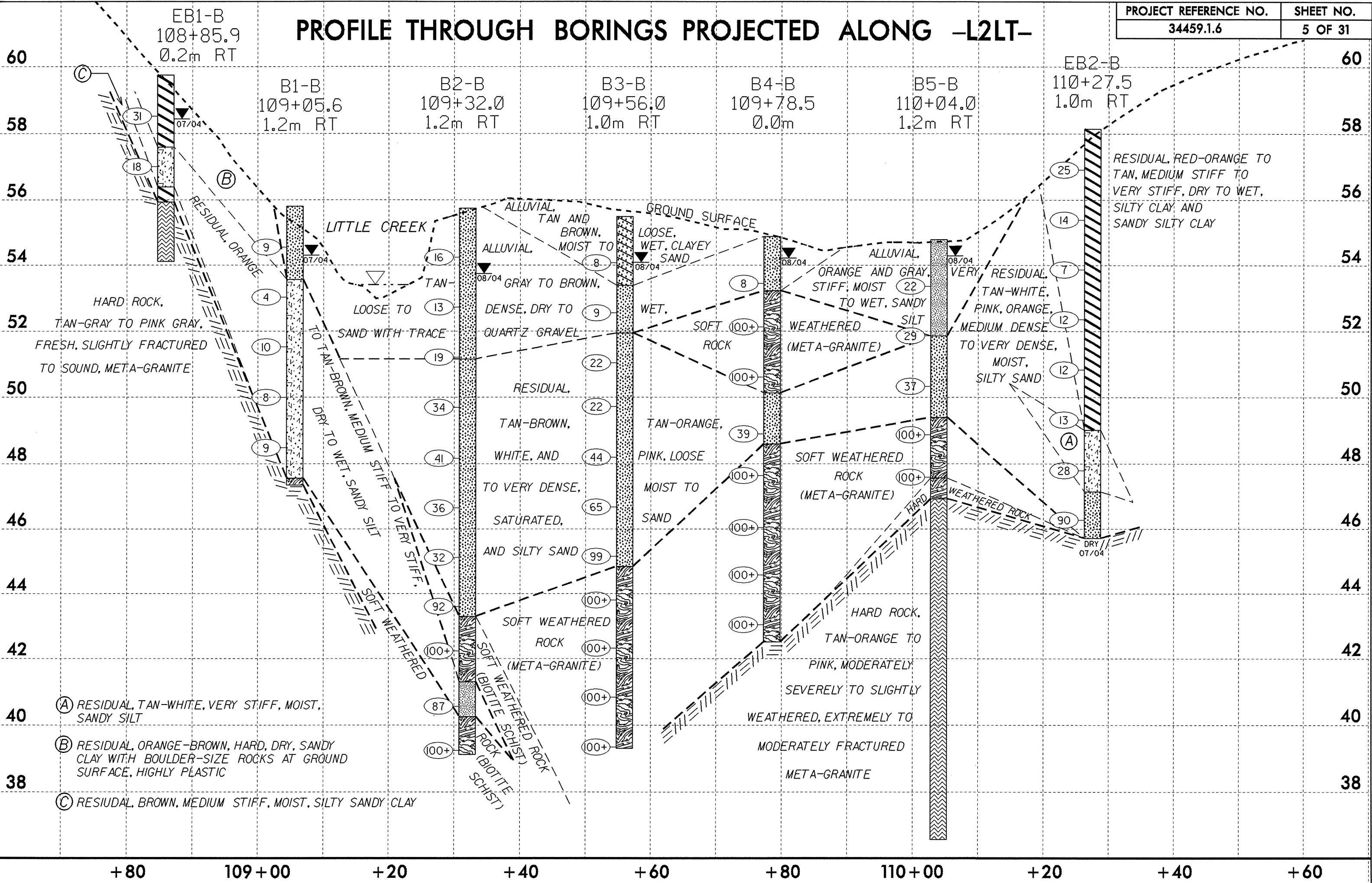


PROFILE THROUGH BORINGS PROJECTED ALONG -L2LT-



EB1-B
108+85.9
0.2m RT

B1-B
109+05.6
1.2m RT

B2-B
109+32.0
1.2m RT

B3-B
109+56.0
1.0m RT

B4-B
109+78.5
0.0m

B5-B
110+04.0
1.2m RT

EB2-B
110+27.5
1.0m RT

60
58
56
54
52
50
48
46
44
42
40
38

60
58
56
54
52
50
48
46
44
42
40
38

+80 109+00 +20 +40 +60 +80 110+00 +20 +40 +60

- (A) RESIDUAL, TAN-WHITE, VERY STIFF, MOIST, SANDY SILT
- (B) RESIDUAL, ORANGE-BROWN, HARD, DRY, SANDY CLAY WITH BOULDER-SIZE ROCKS AT GROUND SURFACE, HIGHLY PLASTIC
- (C) RESIDUAL, BROWN, MEDIUM STIFF, MOIST, SILTY SANDY CLAY

RESIDUAL, RED-ORANGE TO TAN, MEDIUM STIFF TO VERY STIFF, DRY TO WET, SILTY CLAY AND SANDY SILTY CLAY

HARD ROCK, TAN-GRAY TO PINK GRAY, FRESH, SLIGHTLY FRACTURED TO SOUND, META-GRANITE

LITTLE CREEK
RESIDUAL, ORANGE
TAN-BROWN, MEDIUM STIFF TO VERY STIFF, DRY TO WET, SANDY SILT

ALLUVIAL, TAN AND BROWN, MOIST TO DENSE, DRY TO WET, QUARTZ GRAVEL
RESIDUAL, TAN-BROWN, WHITE, AND TO VERY DENSE, SATURATED, AND SILTY SAND
SOFT WEATHERED ROCK (BIOTITE SCHIST)

GROUND SURFACE
ALLUVIAL, TAN AND BROWN, MOIST TO DENSE, DRY TO WET, QUARTZ GRAVEL
RESIDUAL, TAN-BROWN, WHITE, AND TO VERY DENSE, SATURATED, AND SILTY SAND
SOFT WEATHERED ROCK (BIOTITE SCHIST)

LOOSE, WET, CLAYEY SAND
ALLUVIAL, ORANGE AND GRAY, STIFF, MOIST TO WET, SANDY WEATHERED ROCK (META-GRANITE)
HARD ROCK, TAN-ORANGE TO PINK, MODERATELY SEVERELY TO SLIGHTLY WEATHERED, EXTREMELY TO MODERATELY FRACTURED META-GRANITE

ALLUVIAL, ORANGE AND GRAY, STIFF, MOIST TO WET, SANDY WEATHERED ROCK (META-GRANITE)
RESIDUAL, TAN-WHITE, PINK, ORANGE, MEDIUM DENSE TO VERY DENSE, MOIST, SILTY SAND
HARD ROCK, TAN-ORANGE TO PINK, MODERATELY SEVERELY TO SLIGHTLY WEATHERED, EXTREMELY TO MODERATELY FRACTURED META-GRANITE

WEATHERED ROCK (META-GRANITE)
DRY 07/04