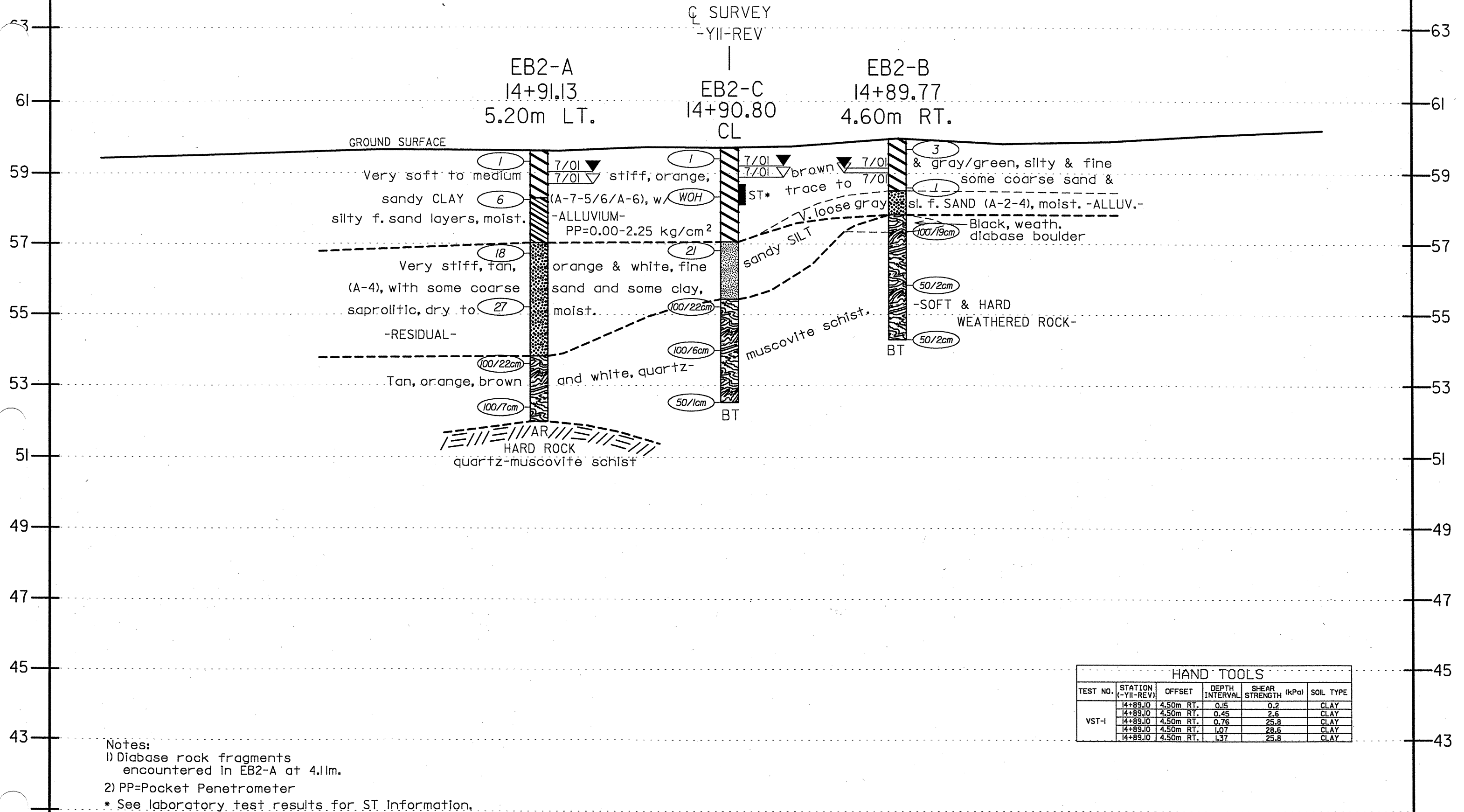
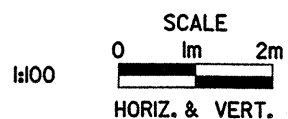


# SECTION THROUGH END BENT 2



Notes:  
 1) Diabase rock fragments encountered in EB2-A at 4.11m.  
 2) PP=Pocket Penetrometer  
 \* See laboratory test results for ST information.



**FROEHLING & ROBERTSON, INC.**  
 GEOTECHNICAL • ENVIRONMENTAL • MATERIALS  
 ENGINEERS • LABORATORIES  
*"OVER ONE HUNDRED YEARS OF SERVICE"*  
 310 Hubert Street  
 Raleigh, North Carolina 27603  
 (919) 828-3441; Fax: (919) 828-5751

CLIENT: N.C. Department of Transportation	
LOCATION: Relocation of Bridge #207 on SR 1560 over Little Creek	
STATE PROJ. No.: 8.T311002	COUNTY: Johnston
TIP No.: R-2552B	FA No.: NHF-60-K(9)
DATE: 9/01	SCALE: 1:100 HORIZ. & VERT.
DRAWING No.: 5	