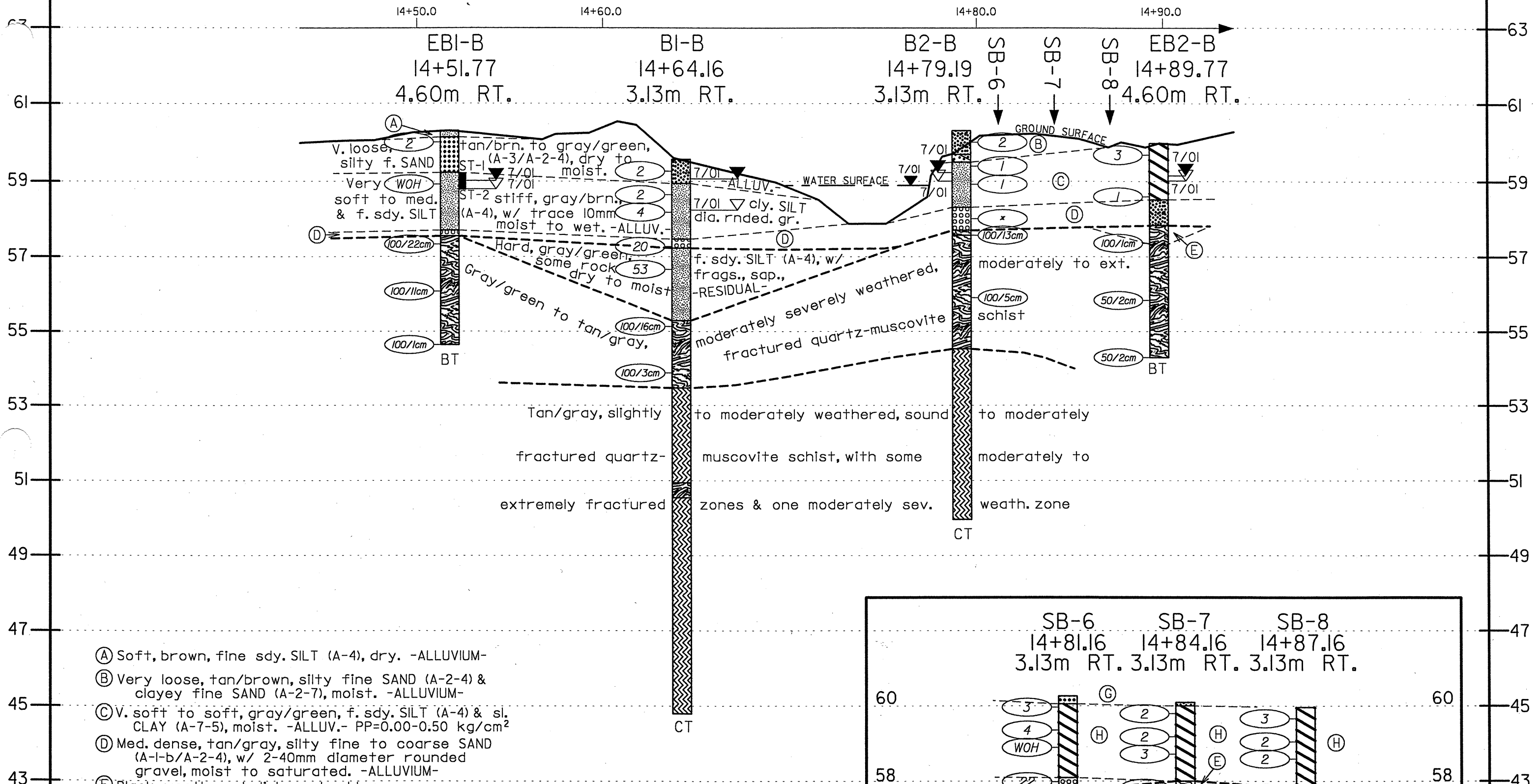
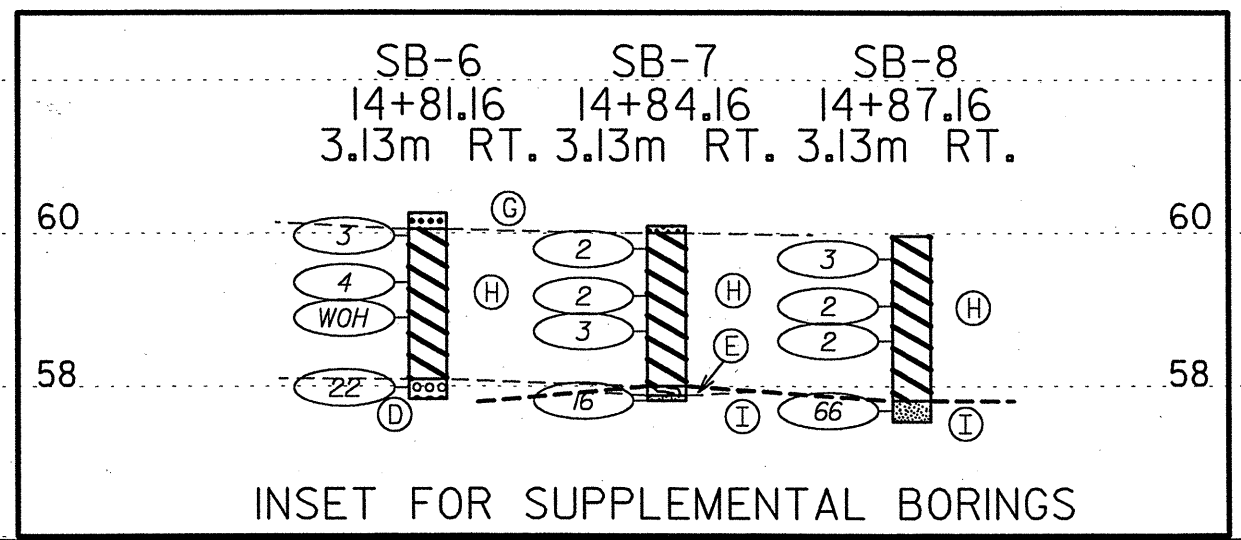



PROFILE 4.60m RIGHT OF -Y11-REV



- (A) Soft, brown, fine sdy. SILT (A-4), dry. -ALLUVIUM-
- (B) Very loose, tan/brown, silty fine SAND (A-2-4) & clayey fine SAND (A-2-7), moist. -ALLUVIUM-
- (C) V. soft to soft, gray/green, f. sdy. SILT (A-4) & sl. CLAY (A-7-5), moist. -ALLUV.- PP=0.00-0.50 kg/cm²
- (D) Med. dense, tan/gray, silty fine to coarse SAND (A-1-b/A-2-4), w/ 2-40mm diameter rounded gravel, moist to saturated. -ALLUVIUM-
- (E) Black, weathered diabase boulder.
- (G) V. loose, tan & orange, rned. f. SAND (A-3) & sl. SAND (A-2-4), moist. -ALLUVIUM-
- (H) V. soft to med. stiff, orange & gray, sl. CLAY (A-7-5), moist. -ALLUVIUM-
- (I) Hard, tan & orange to gray/green, f. sdy. SILT (A-4), moist to wet. -RESIDUAL-

Notes:
 1) * - N-value inflated due to quartz fragments.
 2) Diabase rock fragments encountered in B2-B at 2.59m.



 FROEHLING & ROBERTSON, INC. GEOTECHNICAL • ENVIRONMENTAL • MATERIALS ENGINEERS • LABORATORIES "OVER ONE HUNDRED YEARS OF SERVICE" 310 Hubert Street Raleigh, North Carolina 27603 (919) 828-3441; Fax: (919) 828-5751	CLIENT: N.C. Department of Transportation		
	LOCATION: Relocation of Bridge #207 on SR 1560 over Little Creek		
	STATE PROJ. No.: 8.T311002	COUNTY: Johnston	
	TIP No.: R-2552B	FA No.: NHF-60-(19)	
	DATE: 9/01	SCALE: 1:200 HORIZ., 1:100 VERT.	DRAWING No.: 6