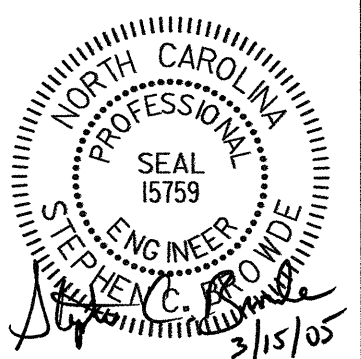
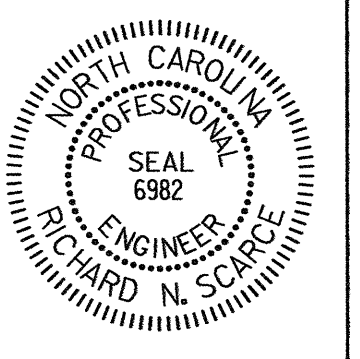
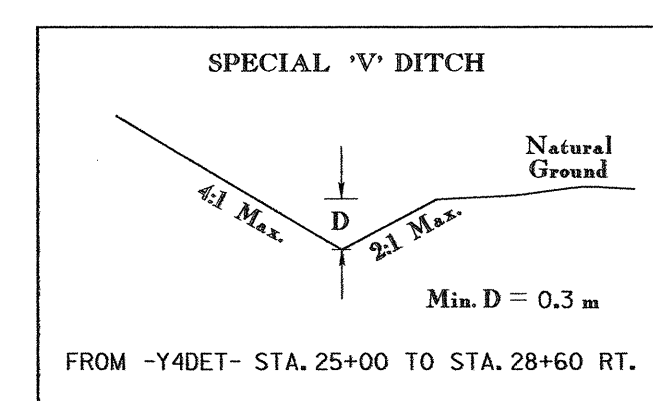
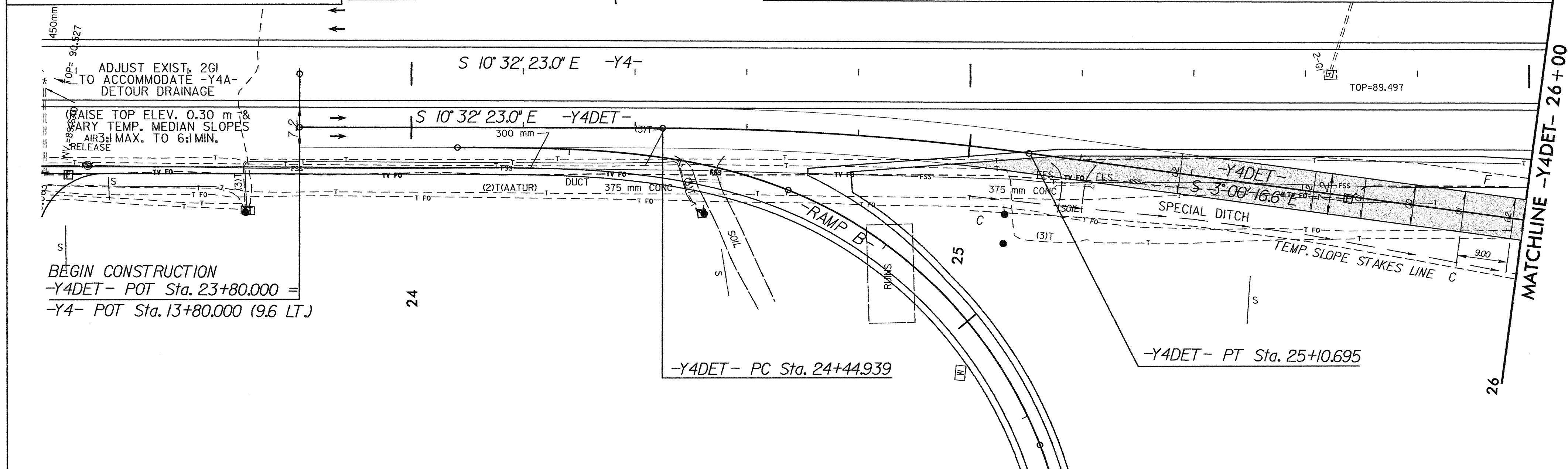
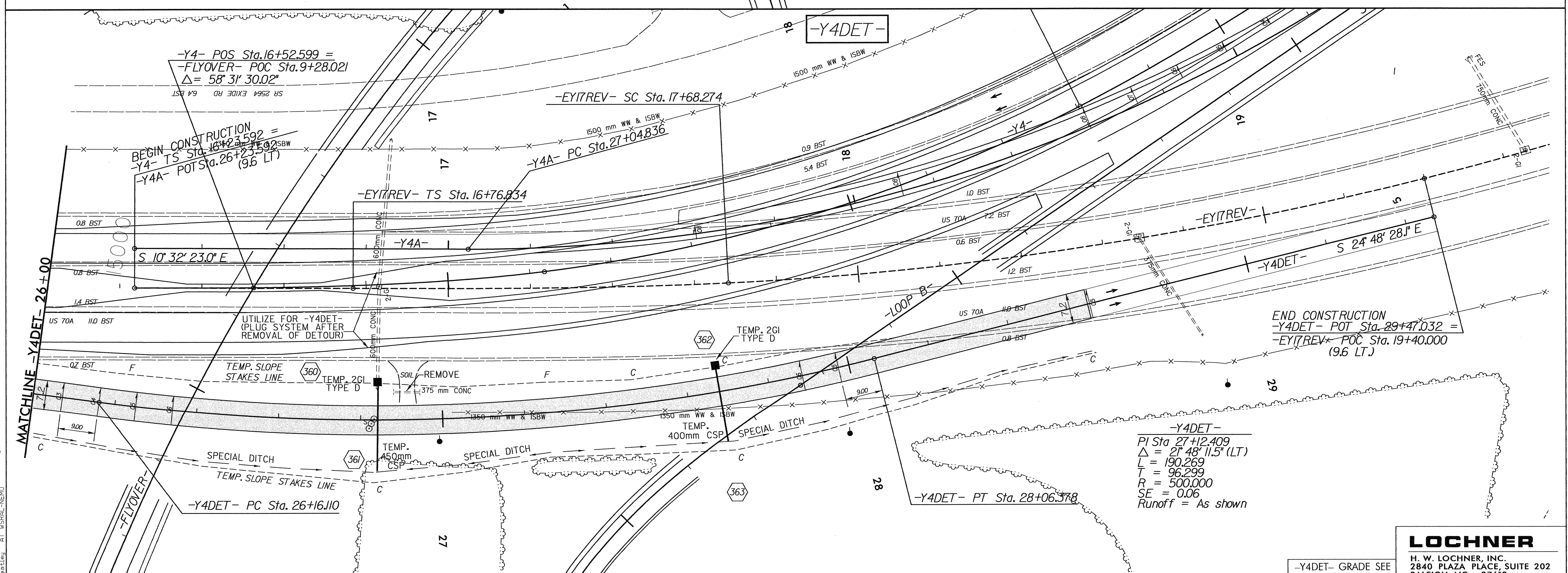


REVISIONS

PROJECT REFERENCE NO. R-2552C		SHEET NO. 2-1
R/W SHEET NO.		
ROADWAY DESIGN ENGINEER	HYDRAULICS ENGINEER	
		
CONST. REV.		
R/W REV.		



-Y4DET-
 PI Sta 24+77.865
 $\Delta = 7^{\circ} 32' 06.4''$ (RT)
 L = 65.756
 T = 32.926
 R = 500.000
 SE = Exist.
 Runoff = As shown



-Y4DET-
 PI Sta 27+12.409
 $\Delta = 2^{\circ} 48' 11.5''$ (LT)
 L = 190.269
 T = 96.299
 R = 500.000
 SE = 0.06
 Runoff = As shown

-Y4DET- GRADE SEE PROFILE SHEET 2-

LOCHNER
 H. W. LOCHNER, INC.
 2840 PLAZA PLACE, SUITE 202
 RALEIGH, NC 27612

21-WAY-CODE, 03/03, 2-RESPEC, BDY, FSH021.dgn
 2/15/05 10:11 AM WESRAE-RENO