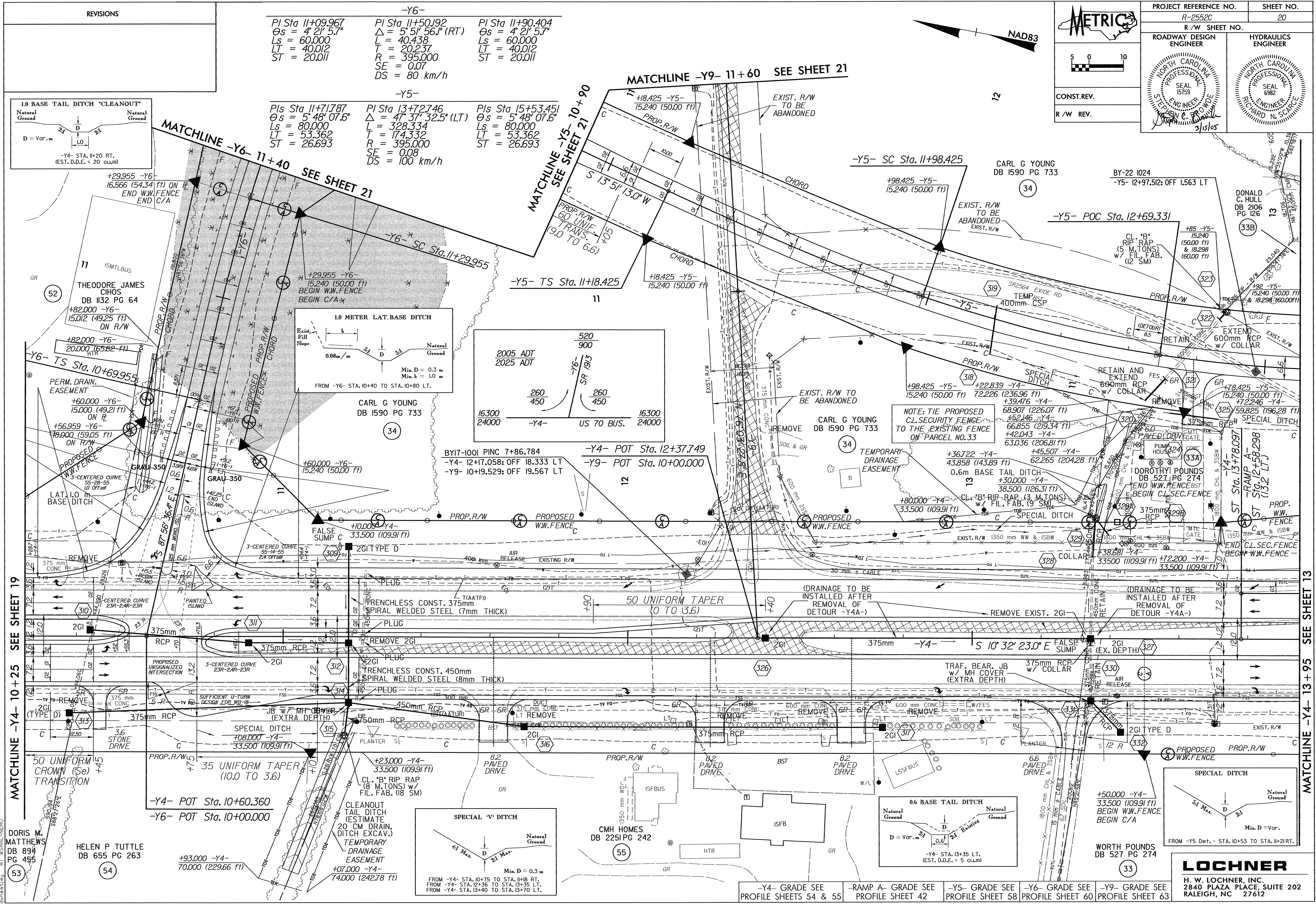
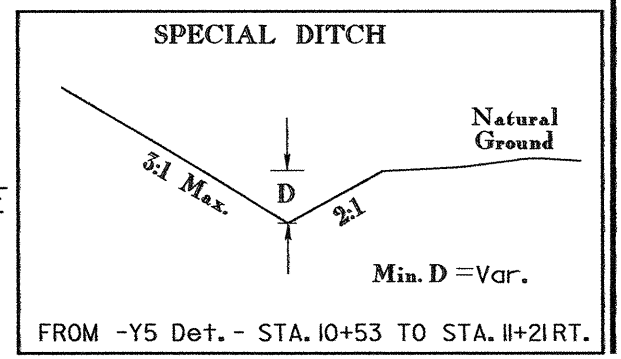
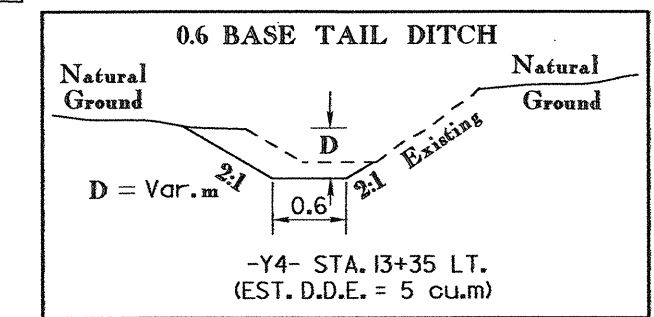
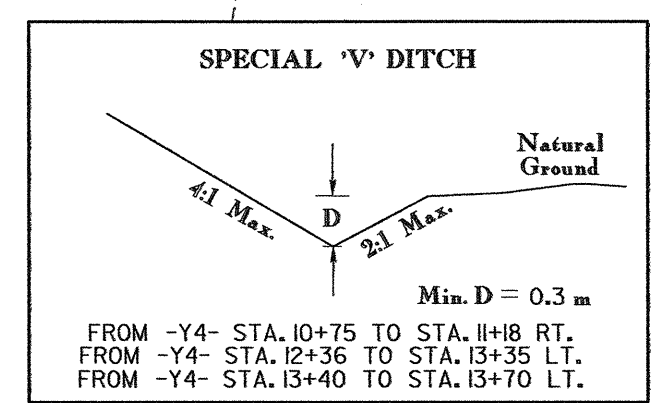
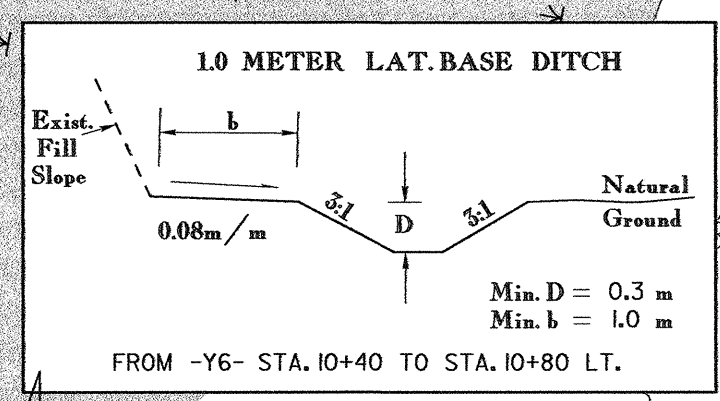
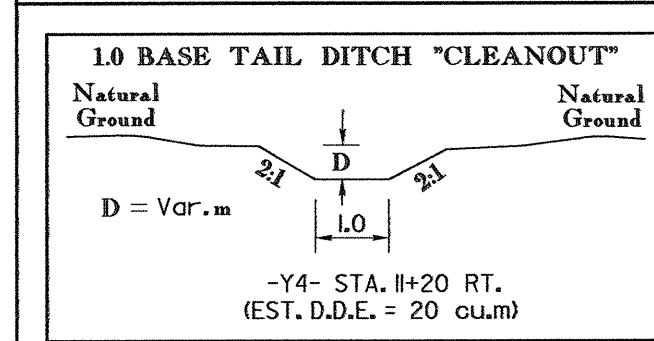


REVISIONS

-Y6-		
PI Sta 11+09.967	PI Sta 11+50.192	PI Sta 11+90.404
$\Theta s = 4^\circ 21' 57''$	$\Delta = 5^\circ 51' 56.1''$ (RT)	$\Theta s = 4^\circ 21' 57''$
Ls = 60.000	L = 40.438	Ls = 60.000
LT = 40.012	T = 20.237	LT = 40.012
ST = 20.011	R = 395.000	ST = 20.011
	SE = 0.07	
	DS = 80 km/h	

-Y5-		
PIs Sta 11+71.787	PI Sta 13+72.746	PIs Sta 15+53.451
$\Theta s = 4^\circ 48' 07.6''$	$\Delta = 47^\circ 37' 32.5''$ (LT)	$\Theta s = 5^\circ 48' 07.6''$
Ls = 80.000	L = 328.334	Ls = 80.000
LT = 53.362	T = 174.332	LT = 53.362
ST = 26.693	R = 395.000	ST = 26.693
	SE = 0.08	
	DS = 100 km/h	



MATCHLINE -Y4- 10+25 SEE SHEET 19

MATCHLINE -Y4- 13+95 SEE SHEET 13

DORIS M. MATTHEWS  
DB 894 PG 455

HELEN P TUTTLE  
DB 655 PG 263

-Y4- GRADE SEE PROFILE SHEETS 54 & 55	RAMP A- GRADE SEE PROFILE SHEET 42	-Y5- GRADE SEE PROFILE SHEET 58	-Y6- GRADE SEE PROFILE SHEET 60	-Y9- GRADE SEE PROFILE SHEET 63
---------------------------------------	------------------------------------	---------------------------------	---------------------------------	---------------------------------

PROJECT REFERENCE NO. R-2552C  
SHEET NO. 20

R/W SHEET NO. ROADWAY DESIGN ENGINEER HYDRAULICS ENGINEER

SEAL 15759  
SEAL 6982

LOCHNER  
H. W. LOCHNER, INC.  
2840 PLAZA PLACE, SUITE 202  
RALEIGH, NC 27612