

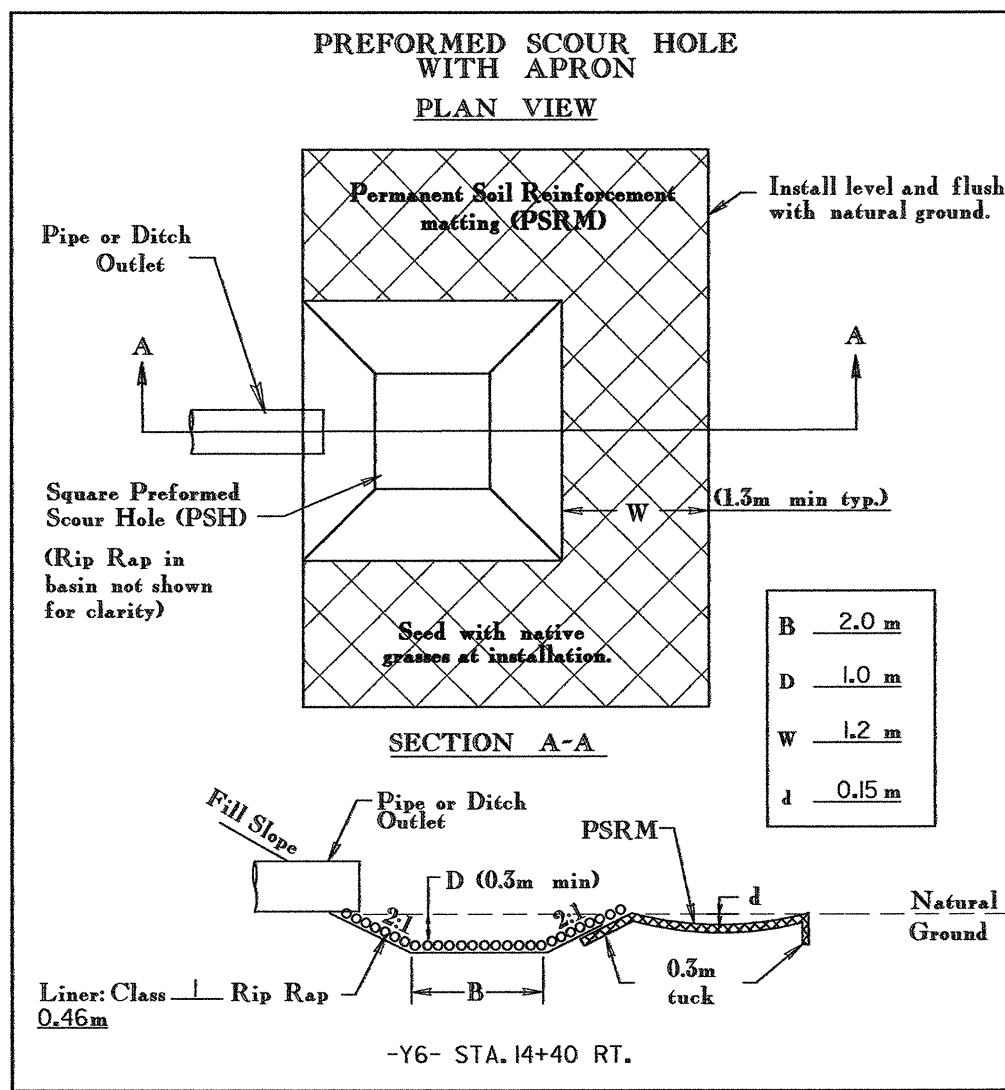
REVISIONS

-Y6-  
 PI Sta 11+09.967  
 $\Delta = 5' 51'' 56.1''$  (RT)  
 $L_s = 60.000$   
 $LT = 40.012$   
 $ST = 20.011$

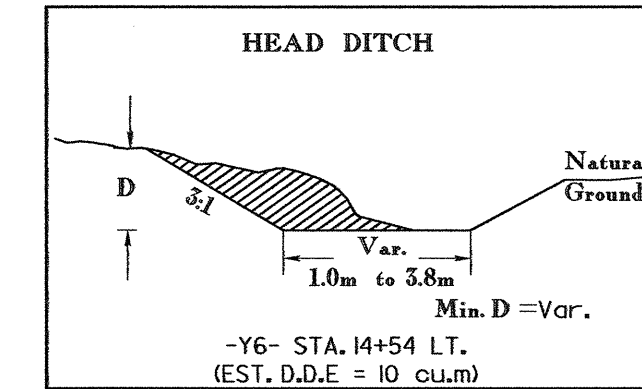
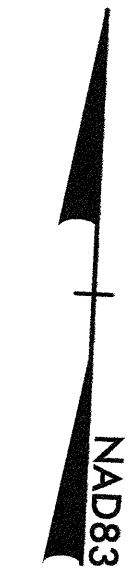
-Y6-  
 PI Sta 13+33.231  
 $\Delta = 8' 43'' 8.1''$   
 $L_s = 70.000$   
 $LT = 46.723$   
 $ST = 23.385$

-Y6-  
 PI Sta 11+50.192  
 $\Delta = 18' 45'' 37.4''$  (LT)  
 $L = 40.438$   
 $T = 20.237$   
 $R = 395.000$   
 $SE = 0.07$   
 $DS = 80$  km/h

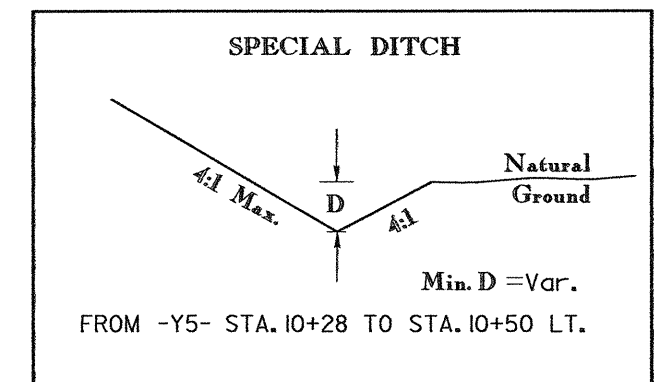
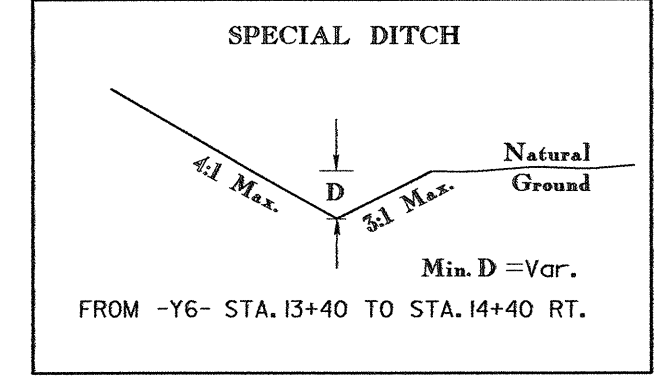
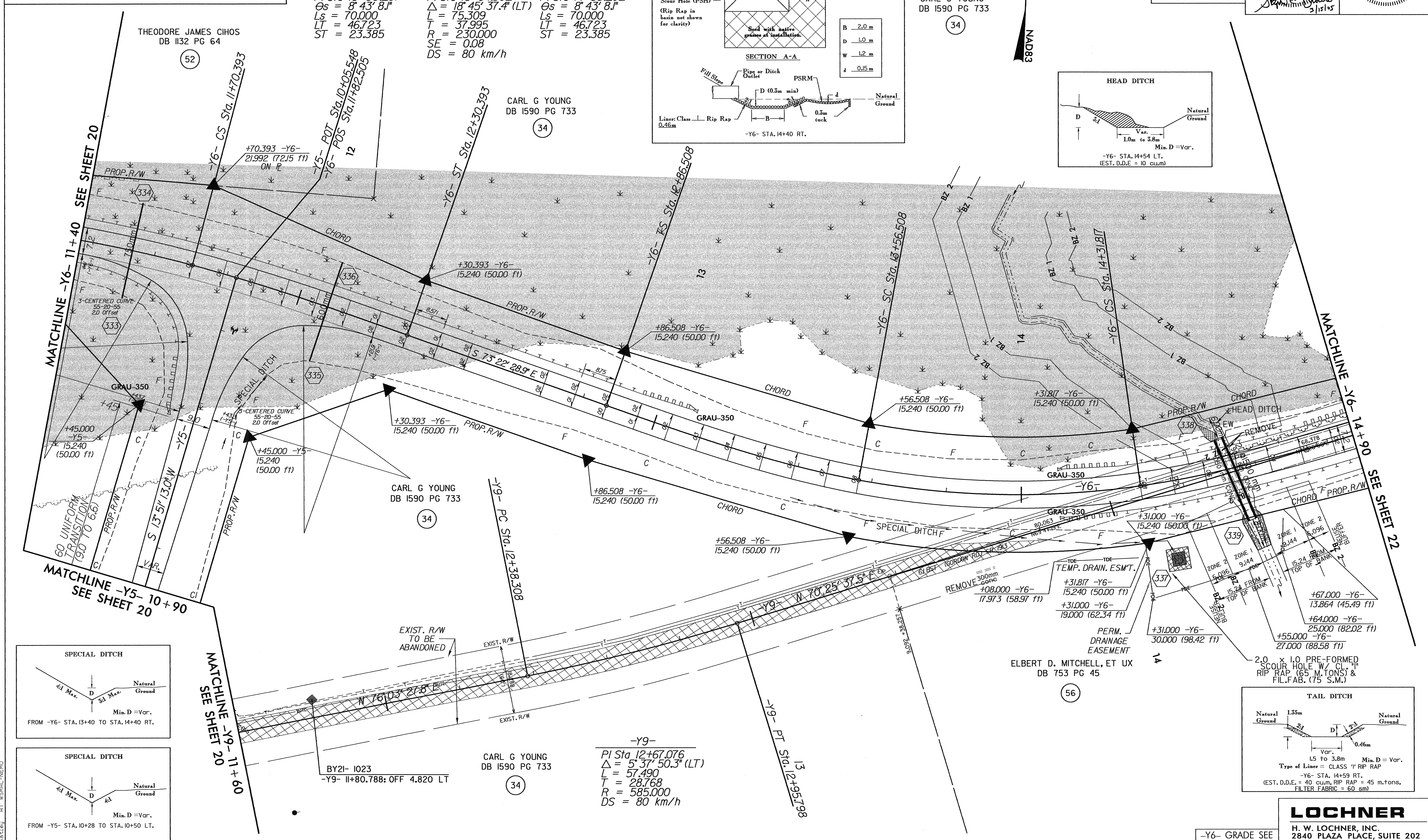
-Y6-  
 PI Sta 14+55.202  
 $\Delta = 8' 43'' 8.1''$   
 $L_s = 70.000$   
 $LT = 46.723$   
 $ST = 23.385$



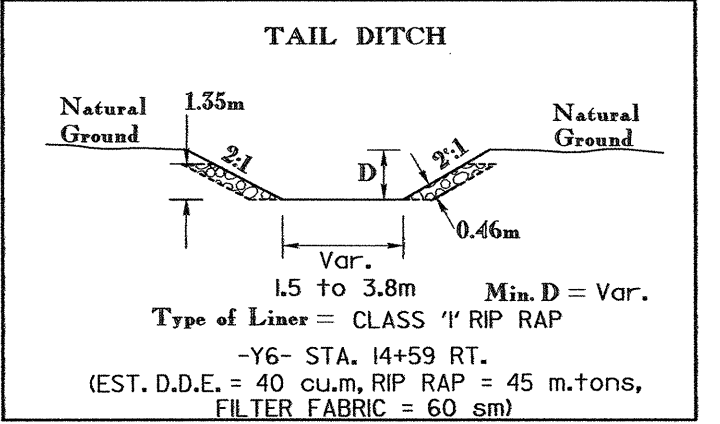
CARL G YOUNG  
 DB 1590 PG 733



PROJECT REFERENCE NO. R-2552C		SHEET NO. 21	
R/W SHEET NO.			
ROADWAY DESIGN ENGINEER		HYDRAULICS ENGINEER	
CONST. REV.		R/W REV.	



ELBERT D. MITCHELL, ET UX  
 DB 753 PG 45



**LOCHNER**  
 H. W. LOCHNER, INC.  
 2840 PLAZA PLACE, SUITE 202  
 RALEIGH, NC 27612

-Y6- GRADE SEE  
 PROFILE SHEET 60

16-1457-005-1548-20252C-RD-Y-FSH21.DGN  
 11/15/2011 10:45 AM  
 WSPRAT-RENO