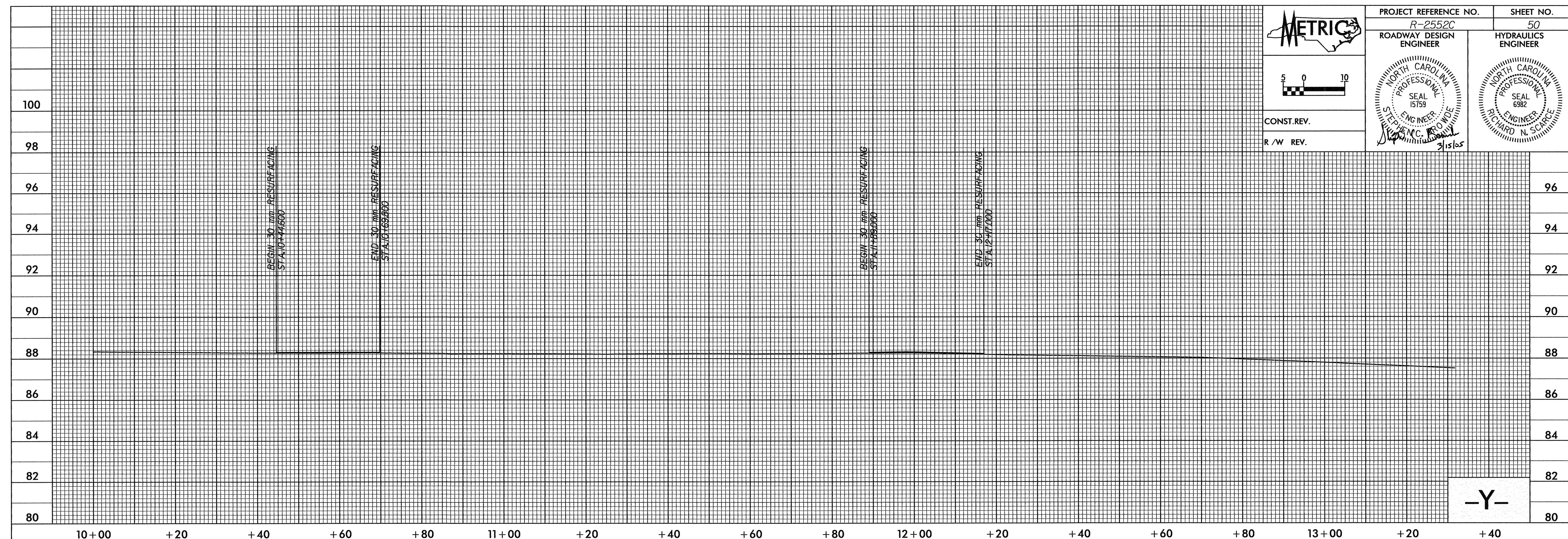
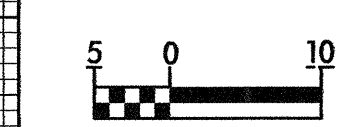
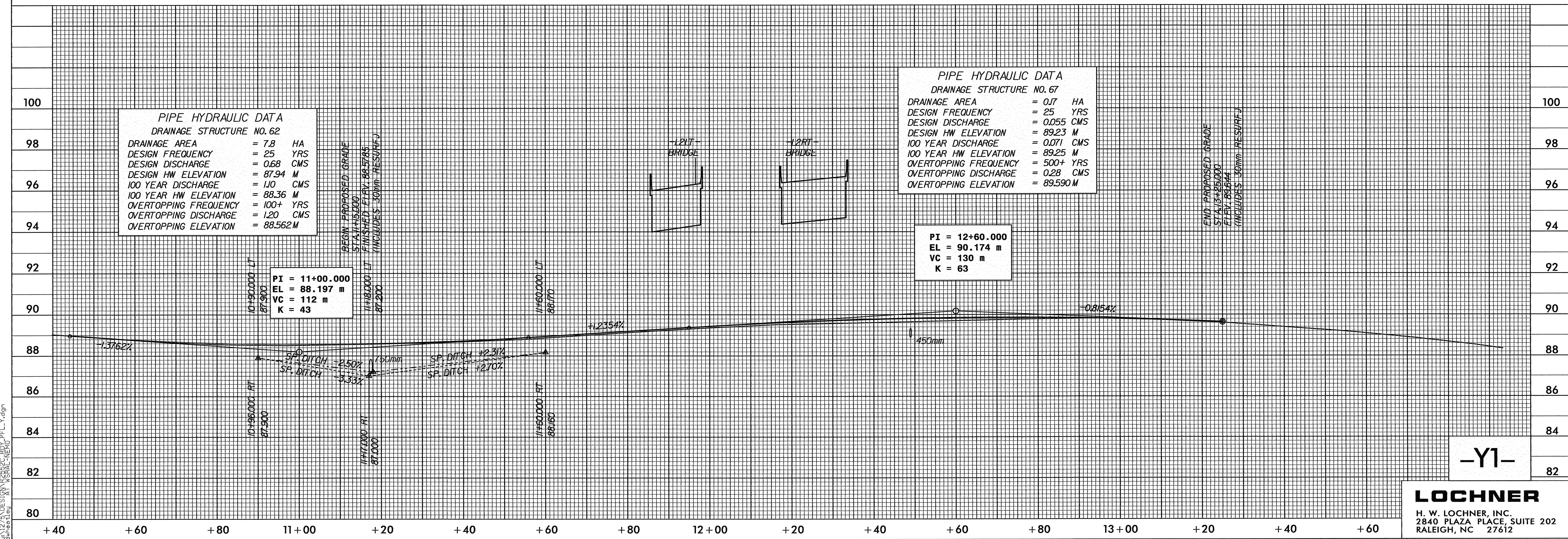




PROJECT REFERENCE NO. R-2552C	SHEET NO. 50
ROADWAY DESIGN ENGINEER	HYDRAULICS ENGINEER
CONST. REV.	
R/W REV.	



-Y-

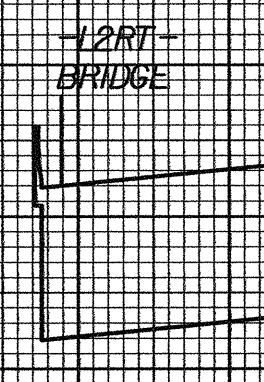
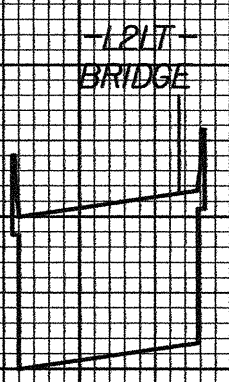


PIPE HYDRAULIC DATA
DRAINAGE STRUCTURE NO. 62

DRAINAGE AREA	= 7.8 HA
DESIGN FREQUENCY	= 25 YRS
DESIGN DISCHARGE	= 0.68 CMS
DESIGN HW ELEVATION	= 87.94 M
100 YEAR DISCHARGE	= 1.10 CMS
100 YEAR HW ELEVATION	= 88.36 M
OVERTOPPING FREQUENCY	= 100+ YRS
OVERTOPPING DISCHARGE	= 1.20 CMS
OVERTOPPING ELEVATION	= 88.562 M

BEGIN PROPOSED GRADE
STA 11+50.00
FINISHED FLOW 88.5785
(INCLUDES 30mm RESURF.)

PI = 11+00.000
EL = 88.197 m
VC = 112 m
K = 43



PIPE HYDRAULIC DATA
DRAINAGE STRUCTURE NO. 67

DRAINAGE AREA	= 0.17 HA
DESIGN FREQUENCY	= 25 YRS
DESIGN DISCHARGE	= 0.055 CMS
DESIGN HW ELEVATION	= 89.23 M
100 YEAR DISCHARGE	= 0.071 CMS
100 YEAR HW ELEVATION	= 89.25 M
OVERTOPPING FREQUENCY	= 500+ YRS
OVERTOPPING DISCHARGE	= 0.28 CMS
OVERTOPPING ELEVATION	= 89.590 M

PI = 12+60.000
EL = 90.174 m
VC = 130 m
K = 63

END PROPOSED GRADE
STA 13+25.000
FINISHED FLOW 89.6144
(INCLUDES 30mm RESURF.)

-Y1-

LOCHNER
H. W. LOCHNER, INC.
2840 PLAZA PLACE, SUITE 202
RALEIGH, NC 27612

17-MAR-2005 10:45:24
 U:\1275\DESIGN\2552C\RDY-PFL.Y.dgn
 dwg:2552c_01