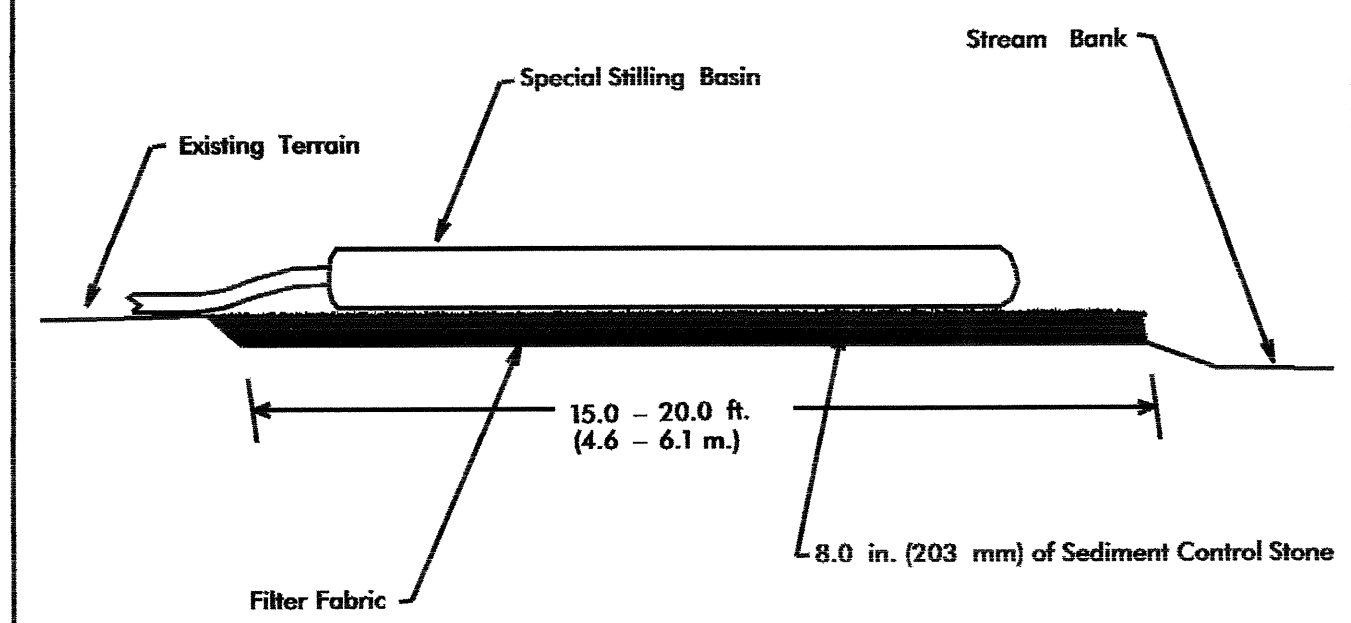


SPECIAL STILLING BASIN WITH ROCK PAD



Not To Scale

Note: Provide Stabilized Outlet to Streambank

ENVIRONMENTALLY SENSITIVE AREA APPLIES TO BUFFER ZONES 1 AND 2 SEE PROJECT SPECIAL PROVISIONS

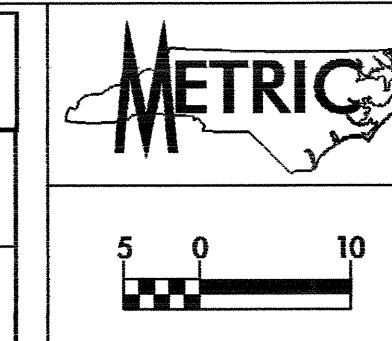
JURISDICTIONAL AREAS DO NOT DISTURB

NOTE: UTILIZE SPECIAL STILLING BASIN AND/OR TEMPORARY ROCK SEDIMENT DAM TYPE - B AS STILLING BASIN WHERE APPLICABLE.

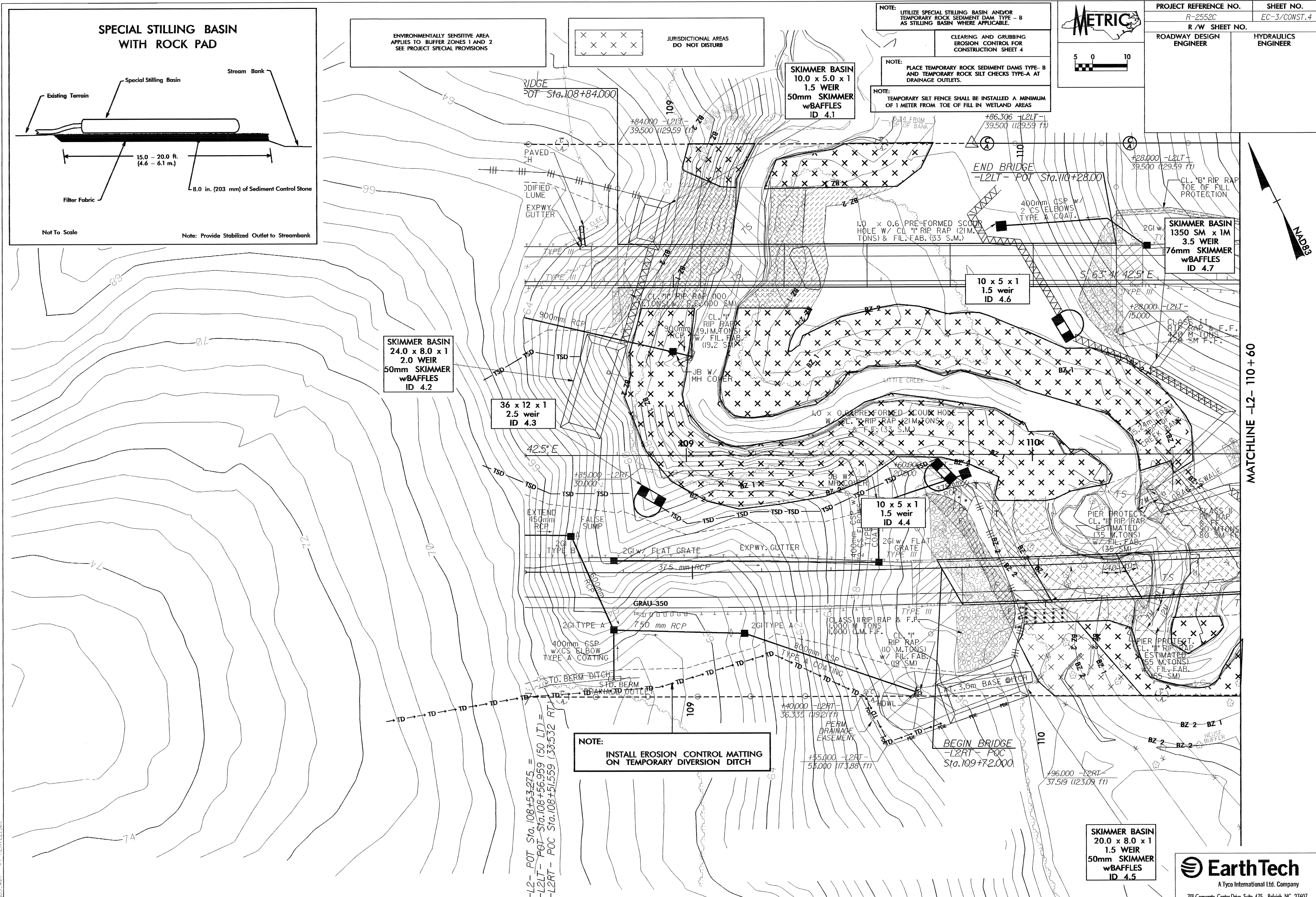
CLEARING AND GRUBBING EROSION CONTROL FOR CONSTRUCTION SHEET 4

NOTE: PLACE TEMPORARY ROCK SEDIMENT DAMS TYPE - B AND TEMPORARY ROCK SILT CHECKS TYPE-A AT DRAINAGE OUTLETS.

NOTE: TEMPORARY SILT FENCE SHALL BE INSTALLED A MINIMUM OF 1 METER FROM TOE OF FILL IN WETLAND AREAS



PROJECT REFERENCE NO. R-2552C	SHEET NO. EC-3/CONST.4
R/W SHEET NO.	HYDRAULICS ENGINEER
ROADWAY DESIGN ENGINEER	

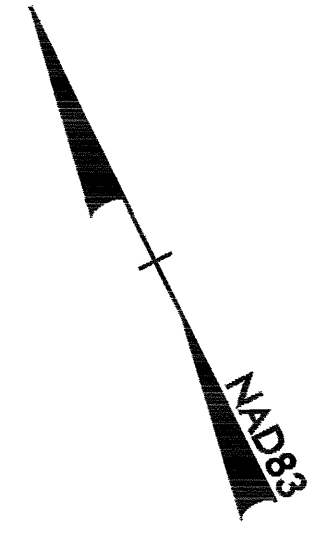


NOTE: INSTALL EROSION CONTROL MATTING ON TEMPORARY DIVERSION DITCH

-L2- POT Sta. 108+53.275 =
-L2LT- POT- Sta. 108+56.959 (50 LT) =
-L2RT- POC Sta. 108+51.559 (33.532 RT) =

SKIMMER BASIN
20.0 x 8.0 x 1
1.5 WEIR
50mm SKIMMER
w/BAFFLES
ID 4.5

MATCHLINE -L2- 110+60



10 FEB 2005 10:48
 c:\pwworking\earthtech\ec-3\108+53.275.dwg
 2552C-3-CONST.4.dwg
 2552C-3-CONST.4.dwg