

UTILITY CONSTRUCTION

ALL WATER AND SEWER LINES OWNED BY JOHNSTON COUNTY

MATCHLINE -Y11- 15+10.500 SEE SHEET UC-7

MATCHLINE -Y13-REV 10+40 SEE SHEET UC-7

MATCHLINE -Y11- 17+38

-Y13-	-Y13-	-Y11-	-Y13-REV
PI= 12+05.300	PI= 10+77.453	PI= 17+98.868	PI= 10+88.120
Δ = 29° 09' 32.9" (RT)	Δ = 37° 01' 13.4" (LT)	Δ = 67° 39' 00.3" (LT)	Δ = 85° 26' 15.3" (LT)
L = 48.087	L = 84.684	L = 399.470	L = 44.735
T = 24.576	T = 43.879	T = 226.706	T = 27.701
R = 94.488	R = 131.064 (61)	R = 338.329	R = 30.000
			SE= 0.060

TIMOTHY EDWARD BOYLAN
DB 1410 PG 326

**PROP. 35M OF 200MM DI WATER PIPE,
PC 2.41 MPA
1 - 200MM X 200MM DI TEE
1 - 200MM GATE VALVE & VALVE BOX,
1.38 MPA WP
CONNECT USING NECESSARY FITTINGS**

**PROP. 22M OF 200MM PVC WATER PIPE,
SDR 21, 1.38MPA WP
CONNECT USING NECESSARY FITTINGS**

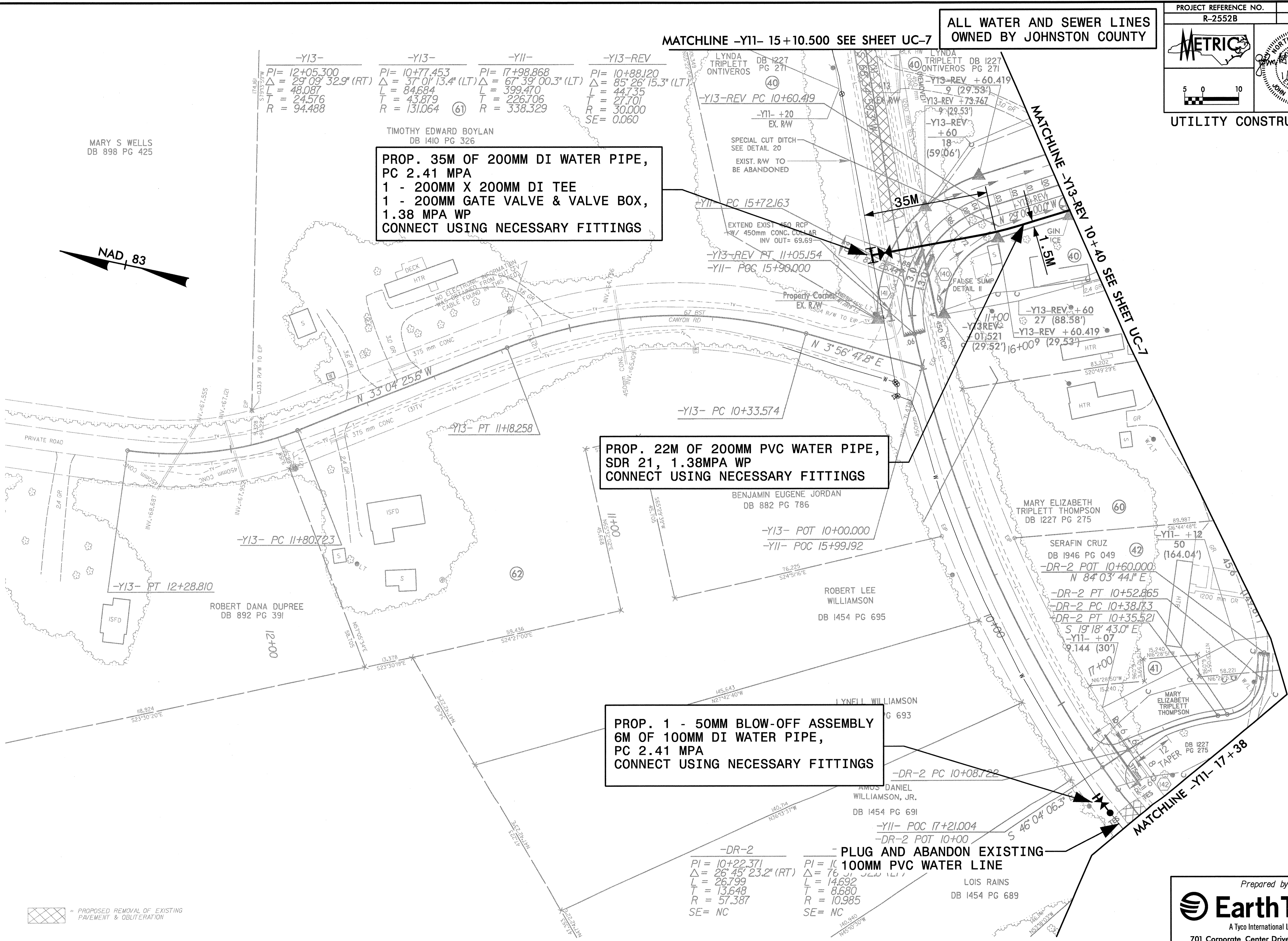
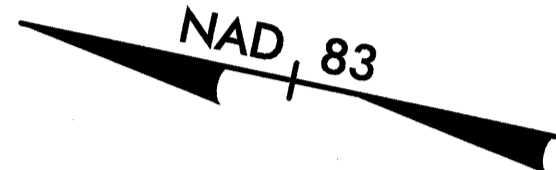
**PROP. 1 - 50MM BLOW-OFF ASSEMBLY
6M OF 100MM DI WATER PIPE,
PC 2.41 MPA
CONNECT USING NECESSARY FITTINGS**

**- DR-2 - PLUG AND ABANDON EXISTING
100MM PVC WATER LINE**

PI= 10+22.371	PI= 10+22.371
Δ = 26° 45' 23.2" (RT)	Δ = 26° 45' 23.2" (RT)
L = 26.799	L = 14.692
T = 13.648	T = 8.680
R = 57.387	R = 10.985
SE= NC	SE= NC

LOIS RAINS
DB 1454 PG 689

MARY S WELLS
DB 898 PG 425



= PROPOSED REMOVAL OF EXISTING PAVEMENT & OBLITERATION

g:\7887\N-2552b\p\c\1\uc\2552buc6.psh
02/28/2005 02:55:42 PM

Prepared by:

A Tyco International Ltd. Company
701 Corporate Center Drive, Suite 475
Raleigh, NC 27607
(919) 854-6200 - (919) 854-6259(fax)