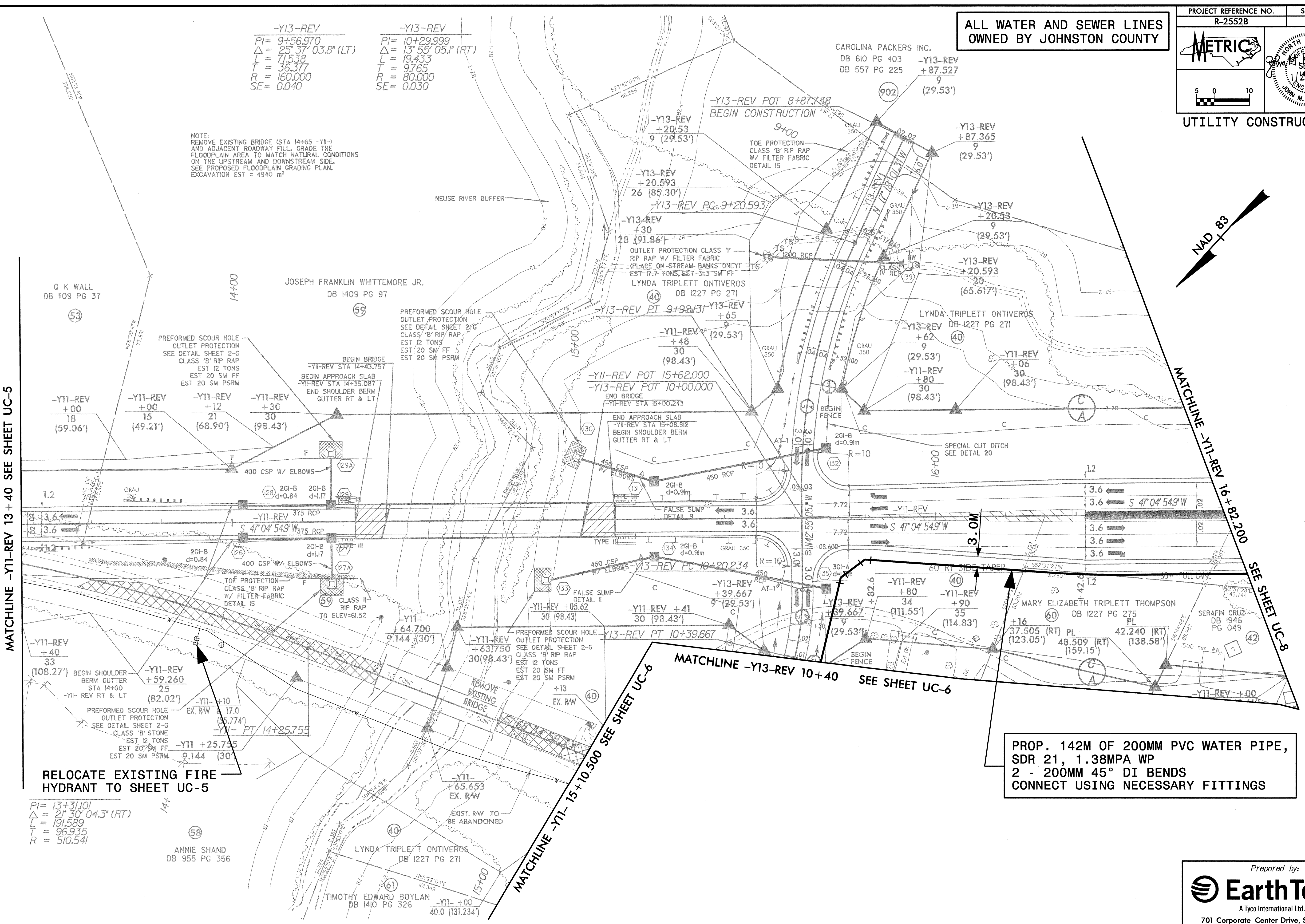


ALL WATER AND SEWER LINES OWNED BY JOHNSTON COUNTY

-Y13-REV  
 PI= 9+56.970  
 Δ = 25° 37' 03.8" (LT)  
 L = 71.538  
 T = 36.377  
 R = 160.000  
 SE = 0.040

-Y13-REV  
 PI= 10+29.999  
 Δ = 13° 55' 05.1" (RT)  
 L = 19.433  
 T = 9.765  
 R = 80.000  
 SE = 0.030

NOTE:  
 REMOVE EXISTING BRIDGE (STA 14+65 -Y11-)  
 AND ADJACENT ROADWAY FILL. GRADE THE  
 FLOODPLAIN AREA TO MATCH NATURAL CONDITIONS  
 ON THE UPSTREAM AND DOWNSTREAM SIDE.  
 SEE PROPOSED FLOODPLAIN GRADING PLAN.  
 EXCAVATION EST = 4940 m<sup>3</sup>



MATCHLINE -Y11-REV 13 + 40 SEE SHEET UC-5

MATCHLINE -Y11-REV 16 + 82.200 SEE SHEET UC-8

MATCHLINE -Y11- 15 + 10.500 SEE SHEET UC-6

MATCHLINE -Y13-REV 10 + 40 SEE SHEET UC-6

RELOCATE EXISTING FIRE HYDRANT TO SHEET UC-5

PROP. 142M OF 200MM PVC WATER PIPE,  
 SDR 21, 1.38MPA WP  
 2 - 200MM 45° DI BENDS  
 CONNECT USING NECESSARY FITTINGS

PI= 13+31.001  
 Δ = 21° 30' 04.3" (RT)  
 L = 191.589  
 T = 96.935  
 R = 510.541

G:\7887\IN\2552B\PROJECT\UC-7\2552BUC7.dwg  
 02/26/2005 02:53:31 PM