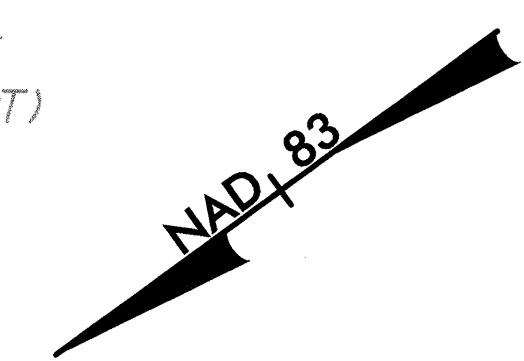


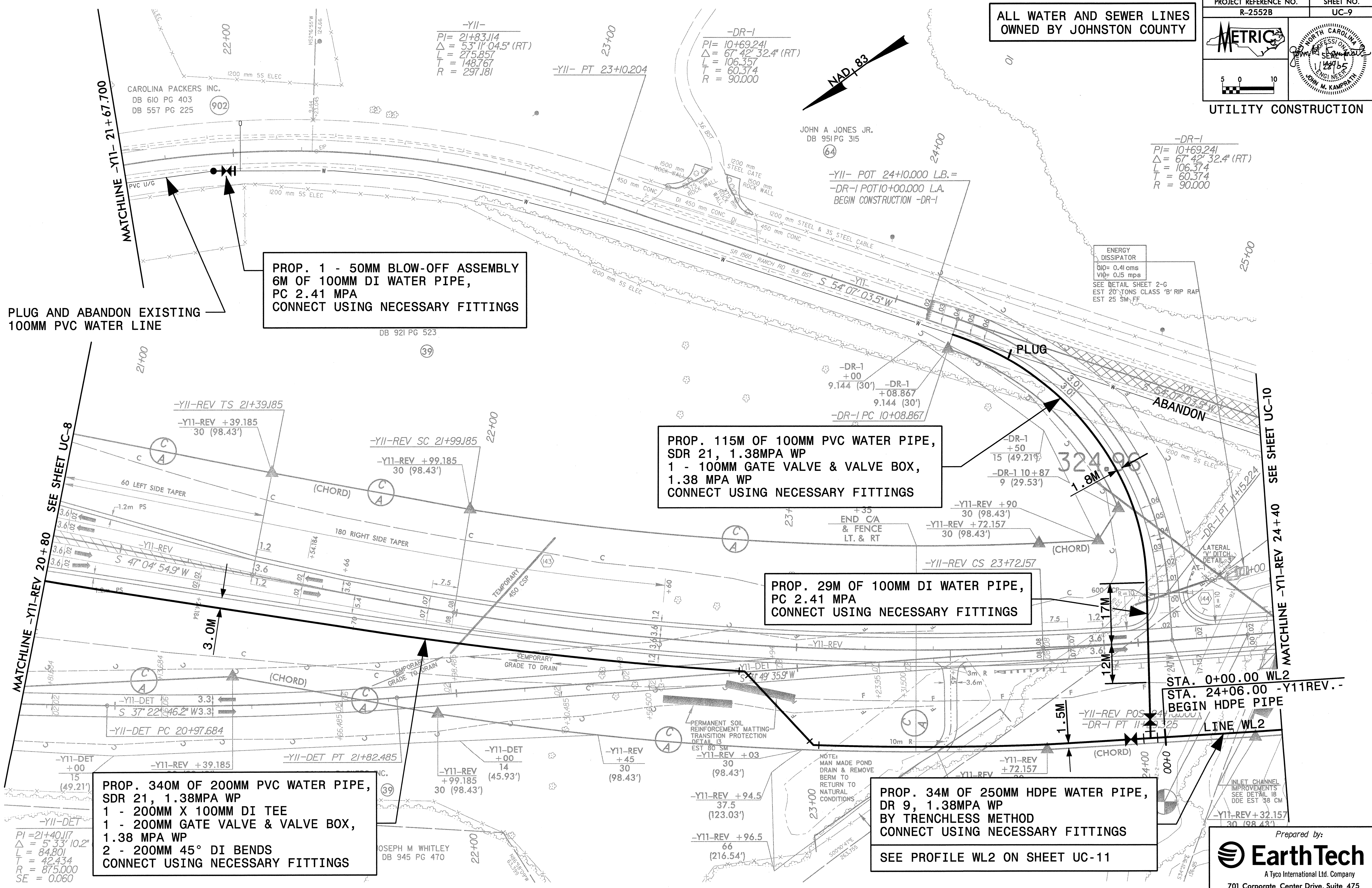
ALL WATER AND SEWER LINES OWNED BY JOHNSTON COUNTY



-Y11-  
PI = 21+83.114  
Δ = 53° 11' 04.5" (RT)  
L = 275.857  
T = 148.767  
R = 297.181

-DR-1  
PI = 10+69.241  
Δ = 67° 42' 32.4" (RT)  
L = 106.357  
T = 60.374  
R = 90.000

-DR-1  
PI = 10+69.241  
Δ = 67° 42' 32.4" (RT)  
L = 106.374  
T = 60.374  
R = 90.000



PROP. 1 - 50MM BLOW-OFF ASSEMBLY  
6M OF 100MM DI WATER PIPE,  
PC 2.41 MPA  
CONNECT USING NECESSARY FITTINGS

PROP. 115M OF 100MM PVC WATER PIPE,  
SDR 21, 1.38MPA WP  
1 - 100MM GATE VALVE & VALVE BOX,  
1.38 MPA WP  
CONNECT USING NECESSARY FITTINGS

PROP. 29M OF 100MM DI WATER PIPE,  
PC 2.41 MPA  
CONNECT USING NECESSARY FITTINGS

PROP. 340M OF 200MM PVC WATER PIPE,  
SDR 21, 1.38MPA WP  
1 - 200MM X 100MM DI TEE  
1 - 200MM GATE VALVE & VALVE BOX,  
1.38 MPA WP  
2 - 200MM 45° DI BENDS  
CONNECT USING NECESSARY FITTINGS

PROP. 34M OF 250MM HDPE WATER PIPE,  
DR 9, 1.38MPA WP  
BY TRENCHLESS METHOD  
CONNECT USING NECESSARY FITTINGS  
SEE PROFILE WL2 ON SHEET UC-11

PLUG AND ABANDON EXISTING  
100MM PVC WATER LINE

8:\7987\Nc-2552b\proj\ug\_r2552buc9.psh  
3/1/2005 02:35:25 PM