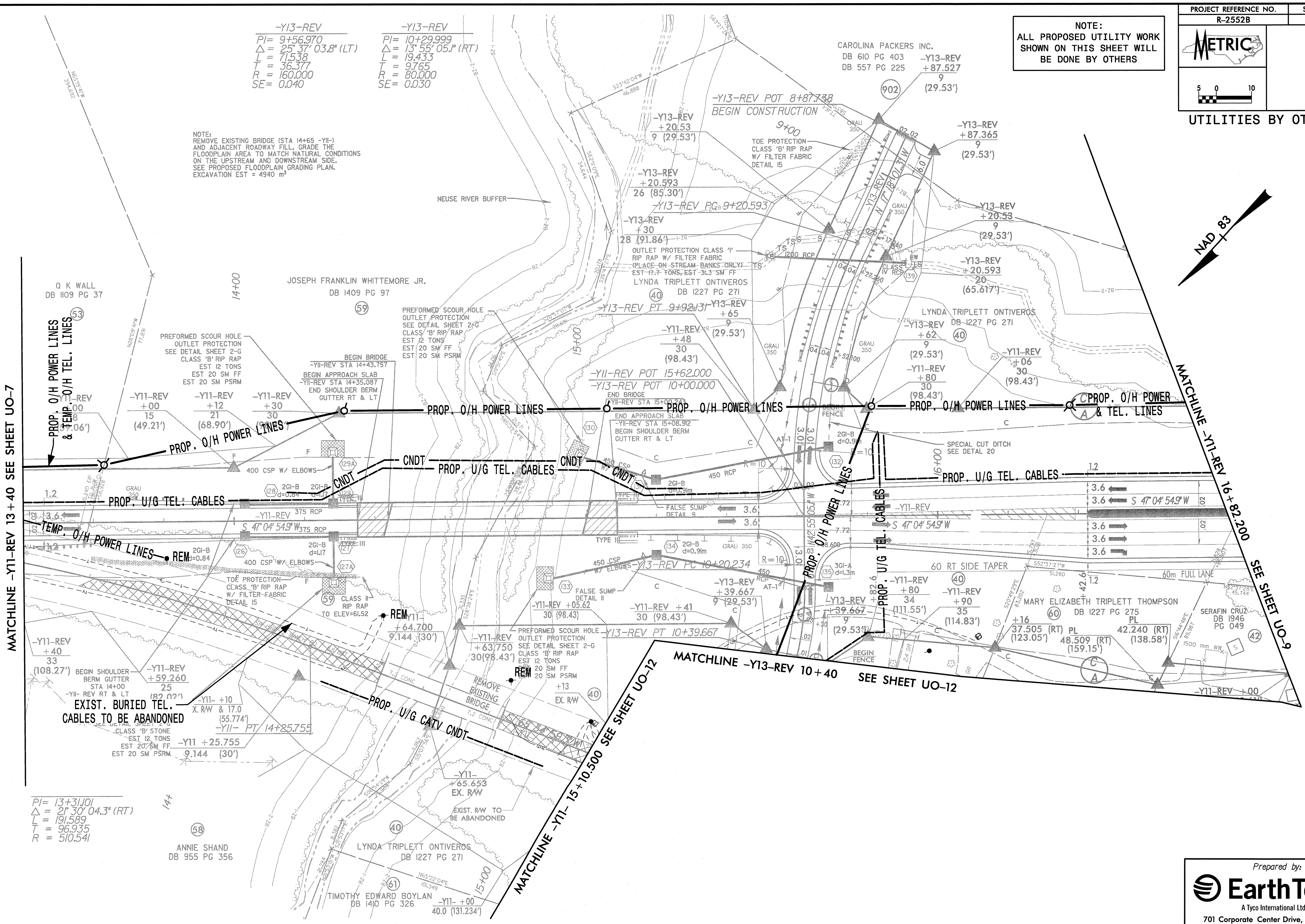


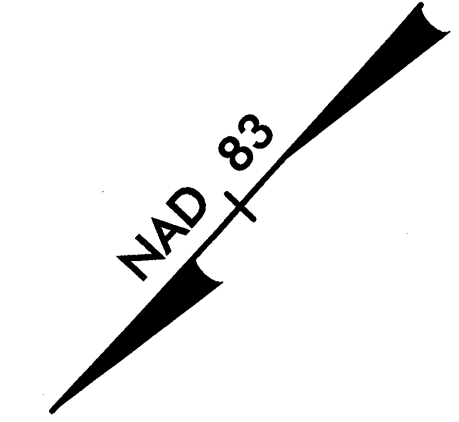
NOTE:
ALL PROPOSED UTILITY WORK
SHOWN ON THIS SHEET WILL
BE DONE BY OTHERS

<p>-Y13-REV $PI = 9+56.970$ $\Delta = 25' 37" 03.8" (LT)$ $L = 71.538$ $T = 36.377$ $R = 160.000$ $SE = 0.040$</p>	<p>-Y13-REV $PI = 10+29.999$ $\Delta = 13' 55' 05.1" (RT)$ $L = 19.433$ $T = 9.765$ $R = 80.000$ $SE = 0.030$</p>
--	---

NOTE:
REMOVE EXISTING BRIDGE (STA 14+65 -Y11-)
AND ADJACENT ROADWAY FILL GRADE THE
FLOODPLAIN AREA TO MATCH NATURAL CONDITIONS
ON THE UPSTREAM AND DOWNSTREAM SIDE.
SEE PROPOSED FLOODPLAIN GRADING PLAN.
EXCAVATION EST = 4940 m³



MATCHLINE -Y11-REV 13+40 SEE SHEET UO-7



MATCHLINE -Y11-REV 16+82.200 SEE SHEET UO-9

MATCHLINE -Y11- 15+10.500 SEE SHEET UO-12

MATCHLINE -Y13-REV 10+40 SEE SHEET UO-12

$PI = 13+31.01$
 $\Delta = 21' 30" 04.3" (RT)$
 $L = 191.589$
 $T = 96.935$
 $R = 510.541$

ANNIE SHAND
DB 955 PG 356

LYNDA TRIPLETT ONTIVEROS
DB 1227 PG 271

TIMOTHY EDWARD BOYLAN
DB 1410 PG 326