

<b>-Y7-DET</b> PI= 12+40.574 Δ= 26° 27' 40.7" (RT) L = 115.459 T = 58.778 R = 250.000 SE = 0.060	<b>-Y7-DET</b> PI= 14+43.027 Δ= 33° 11' 39.3" (LT) L = 144.837 T = 74.515 R = 250.000 SE = 0.060	<b>-DR-3</b> PI= 10+50.286 Δ= 53° 23' 32.4" (RT) L = 93.187 T = 50.286 R = 100.000	<b>-DR-3</b> PI= 9+70.847 Δ= 75° 18' 55.1" (LT) L = 13.145 T = 7.717 R = 10.000	<b>-Y7-</b> PI= 12+04.373 Δ= 18° 50' 36.6" (RT) L = 174.307 T = 87.948 R = 530.000 SE = 0.060	<b>-Y7-</b> PI= 15+28.255 Δ= 4° 24' 12.3" (LT) L = 134.495 T = 67.281 R = 1750.000 SE = 0.030
--	--	---	--	---	---

<b>-L-</b> PIs= 65+11.242 Θs= 1° 36' 03.3" Ls= 95.000 LT= 63.3359 ST= 31.6690	<b>-L-</b> PI= 69+63.482 Δ= 27° 47' 29.8" (RT) L = 824.5940 T = 420.5756 R = 1700.000 SE = 0.040
--	--

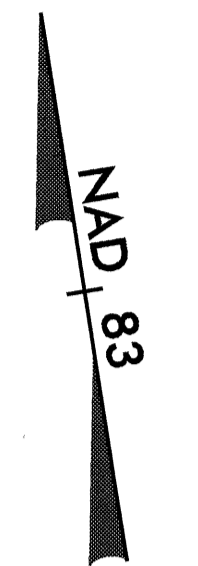
**METRIC**

CONST. REV.  
R/W REV.

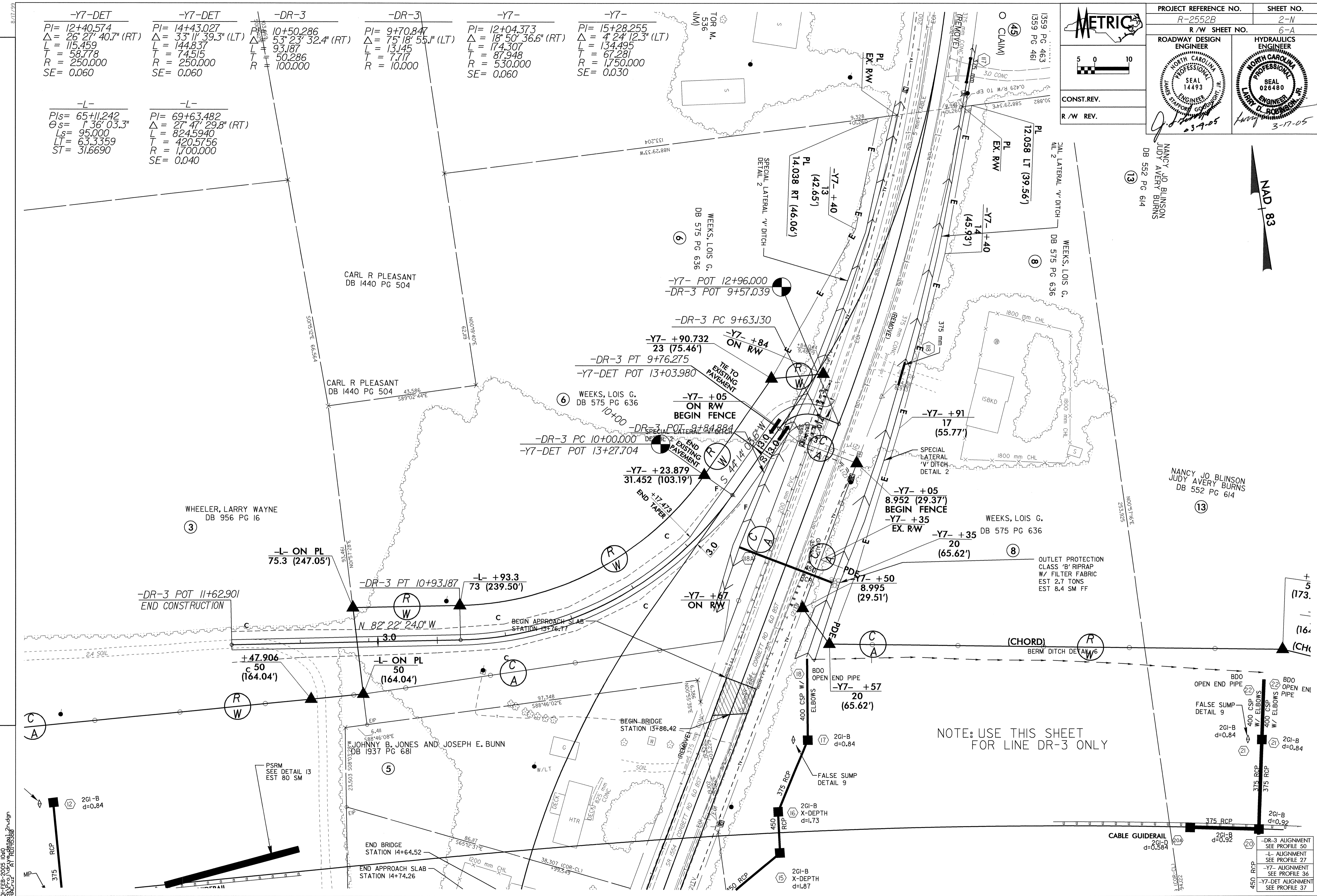
PROJECT REFERENCE NO. R-2552B	SHEET NO. 2-N
R/W SHEET NO. 6-A	HYDRAULICS ENGINEER SEAL 026480
ROADWAY DESIGN ENGINEER SEAL 14493	PROFESSIONAL ENGINEER SEAL 026480

DATE: 03-17-05

NANCY JO BLINSON  
JUDY AVERY BURNS  
DB 552 PG 6/4



REVISIONS  
R/W REVISION - PER SUBMITTAL OF APRIL 9, 2002  
BY MRH JUNE 7, 2002



NOTE: USE THIS SHEET FOR LINE DR-3 ONLY

DR-3 ALIGNMENT SEE PROFILE 50
-L- ALIGNMENT SEE PROFILE 27
-Y7- ALIGNMENT SEE PROFILE 36
-Y7-DET ALIGNMENT SEE PROFILE 37