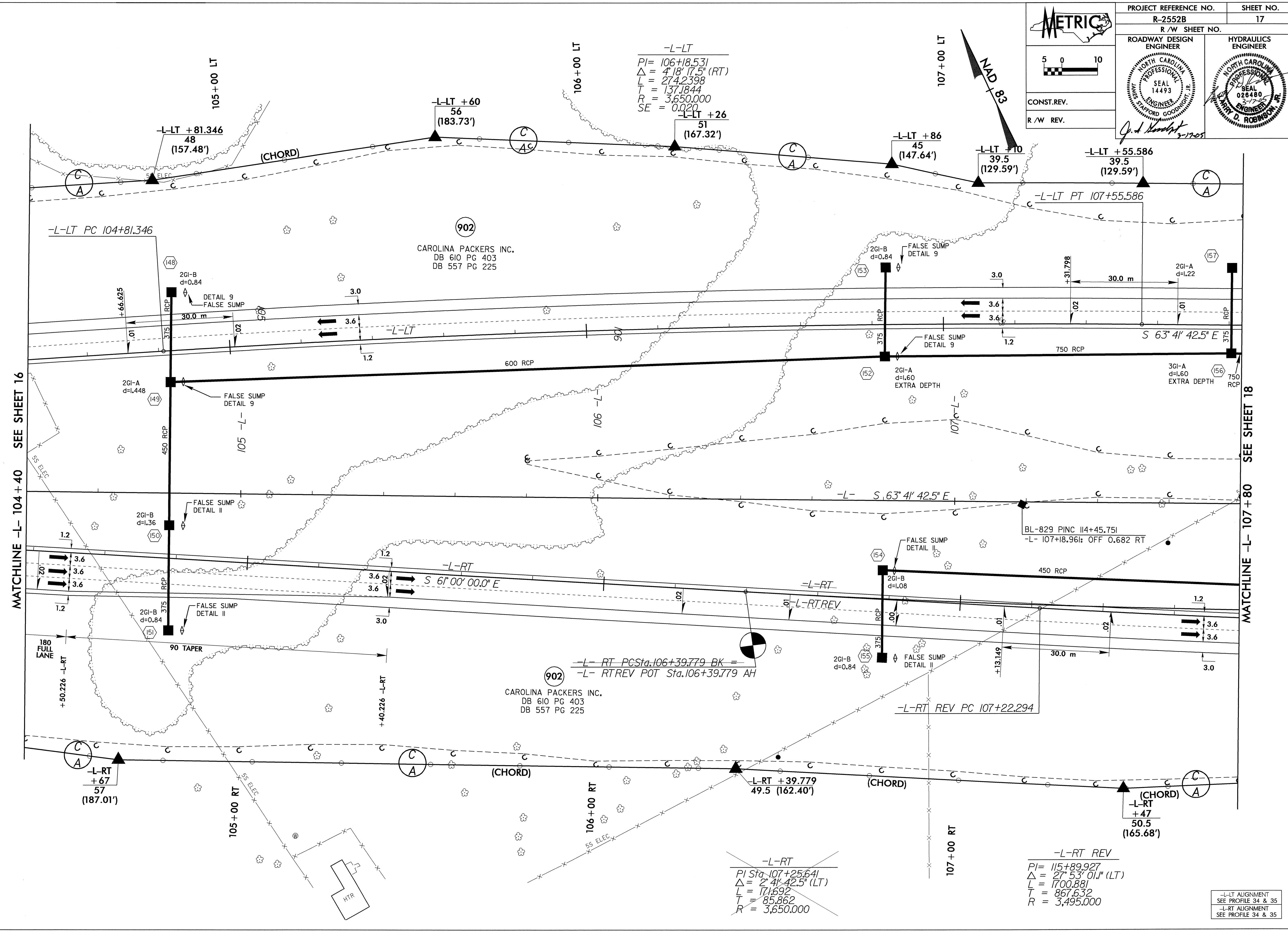


	PROJECT REFERENCE NO.	SHEET NO.
	R-2552B	17
ROADWAY DESIGN ENGINEER		HYDRAULICS ENGINEER
CONST. REV.		R/W REV.

5 0 10

NAD 83



-L-LT
 $PI = 106+18.531$
 $\Delta = 4' 18'' 17.5'' (RT)$
 $L = 274.2398$
 $T = 137.1844$
 $R = 3,650.000$
 $SE = 0.020$

~~**-L-RT**
 $PI Sta. 107+25.641$
 $\Delta = 2' 41'' 42.5'' (LT)$
 $L = 171.692$
 $T = 85.862$
 $R = 3,650.000$~~

-L-RT REV
 $PI = 115+89.927$
 $\Delta = 27' 53'' 01.1'' (LT)$
 $L = 1700.881$
 $T = 867.632$
 $R = 3,495.000$

MATCHLINE -L- 104 + 40 SEE SHEET 16

MATCHLINE -L- 107 + 80 SEE SHEET 18

REVISIONS

10-MAR-2005 10:00 AM
 MBLetchworth rd-04oce34

-L-LT ALIGNMENT
 SEE PROFILE 34 & 35
 -L-RT ALIGNMENT
 SEE PROFILE 34 & 35