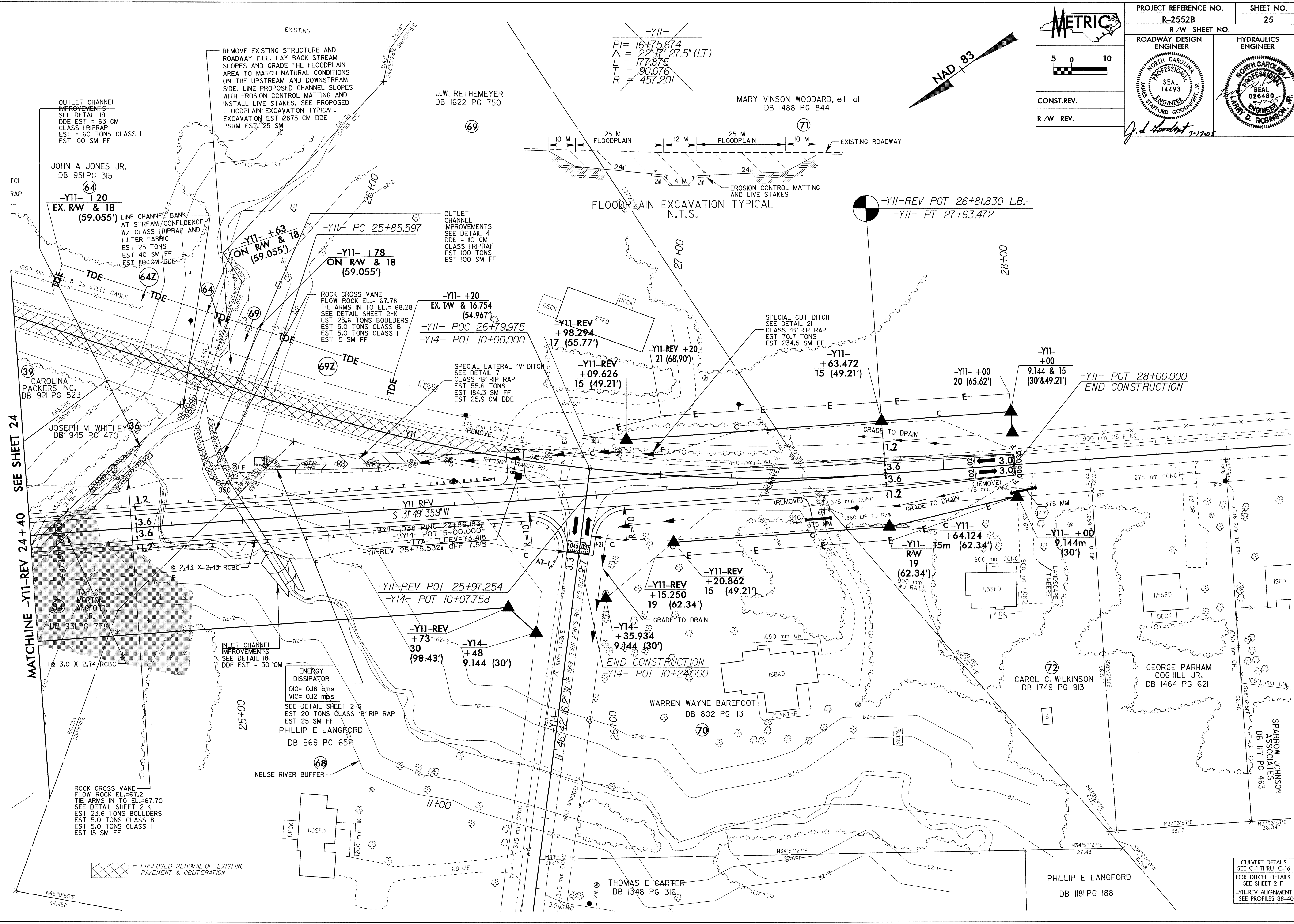


~~-Y11-~~
 $PI = 16+75.674$
 $\Delta = 22.7^\circ 27.5' (LT)$
 $L = 177.875$
 $T = 90.076$
 $R = 457.201$

10-MAR-2005 09:55:52 h:\25\rd-04\oc34\25.dwg
 MBLetchworth



MATCHLINE -Y11-REV 24+40 SEE SHEET 24

OUTLET CHANNEL IMPROVEMENTS
 SEE DETAIL 18
 DDE EST = 63 CM
 CLASS IRIPRAP
 EST = 60 TONS CLASS I
 EST 100 SM FF

JOHN A JONES JR.
 DB 951 PG 315

-Y11- +20
 EX. RW & 18
 (59.055')

CAROLINA PACKERS INC.
 DB 921 PG 523

JOSEPH M WHITLEY
 DB 945 PG 470

TAYLOR MORTON LANGFORD, JR.
 DB 931 PG 778

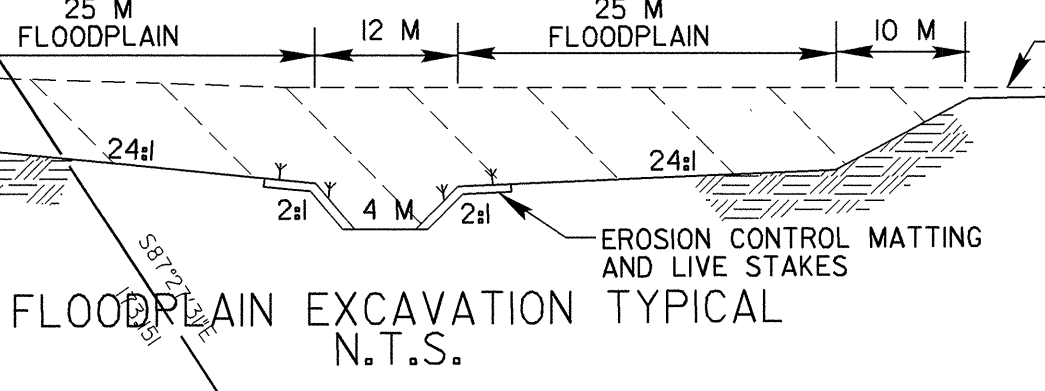
ROCK CROSS VANE
 FLOW ROCK EL.=67.2
 TIE ARMS IN TO EL.=67.70
 SEE DETAIL SHEET 2-K
 EST 23.6 TONS BOULDERS
 EST 5.0 TONS CLASS B
 EST 5.0 TONS CLASS I
 EST 15 SM FF

ENERGY DISSIPATOR
 Q10= 0.18 cms
 V10= 0.12 mps
 SEE DETAIL SHEET 2-G
 EST 20 TONS CLASS 'B' RIP RAP
 EST 25 SM FF
 PHILLIP E LANGFORD
 DB 969 PG 652

ROCK CROSS VANE
 FLOW ROCK EL.= 67.78
 TIE ARMS IN TO EL.= 68.28
 SEE DETAIL SHEET 2-K
 EST 23.6 TONS BOULDERS
 EST 5.0 TONS CLASS B
 EST 5.0 TONS CLASS I
 EST 15 SM FF

J.W. RETHEMEYER
 DB 1622 PG 750

MARY VINSON WOODARD, et al
 DB 1488 PG 844



OUTLET CHANNEL IMPROVEMENTS
 SEE DETAIL 4
 DDE = 110 CM
 CLASS IRIPRAP
 EST 100 TONS
 EST 100 SM FF

-Y11- +20
 EX. TW & 16.754
 (54.967)
 -Y11- POC 26+79.975
 -Y14- POT 10+00.000

SPECIAL LATERAL 'V' DITCH
 SEE DETAIL 7
 CLASS 'B' RIP RAP
 EST 55.6 TONS
 EST 184.3 SM FF
 EST 25.9 CM DDE

-Y11-REV
 S 31°49'35.9"W
 BY11= 1038 PINC 22+86.183=
 BY14= POT 5+00.000=
 T7A= ELEV=73.418
 -Y11-REV 25+75.532: OFF 7.515

-Y11-REV POT 25+97.254
 -Y14- POT 10+07.758

-Y11-REV
 +73- B2-2
 30 (98.43')
 -Y14-
 +48
 9.144 (30')

-Y11-REV
 +98.294
 17 (55.77')

-Y11-REV
 +09.626
 15 (49.21')

-Y11-REV
 +15.250
 19 (62.34')

-Y11-REV
 +20.862
 15 (49.21')

-Y14-
 +35.934
 9.144 (30')

END CONSTRUCTION
 -Y14- POT 10+24.000

SPECIAL CUT DITCH
 SEE DETAIL 2J
 CLASS 'B' RIP RAP
 EST 70.7 TONS
 EST 234.5 SM FF

-Y11-
 +63.472
 15 (49.21')

C-Y11-
 +64.124
 15m (62.34')

-Y11-
 R/W
 19 (62.34')

-Y11-
 +20.862
 15 (49.21')

WARREN WAYNE BAREFOOT
 DB 802 PG 113

-Y11- +00
 20 (65.62')

-Y11- +00
 9.144 & 15
 (30' & 49.21')

CAROL C. WILKINSON
 DB 1749 PG 913

PHILLIP E LANGFORD
 DB 1181 PG 188

-Y11- POT 28+00.000
 END CONSTRUCTION

GEORGE PARHAM COGHILL JR.
 DB 1464 PG 621

SPARROW JOHNSON ASSOCIATES
 DB 1177 PG 463

 = PROPOSED REMOVAL OF EXISTING PAVEMENT & OBLITERATION

CUVERT DETAILS
 SEE C-1 THRU C-16
 FOR DITCH DETAILS
 SEE SHEET 2-F
 -Y11-REV ALIGNMENT
 SEE PROFILES 38-40