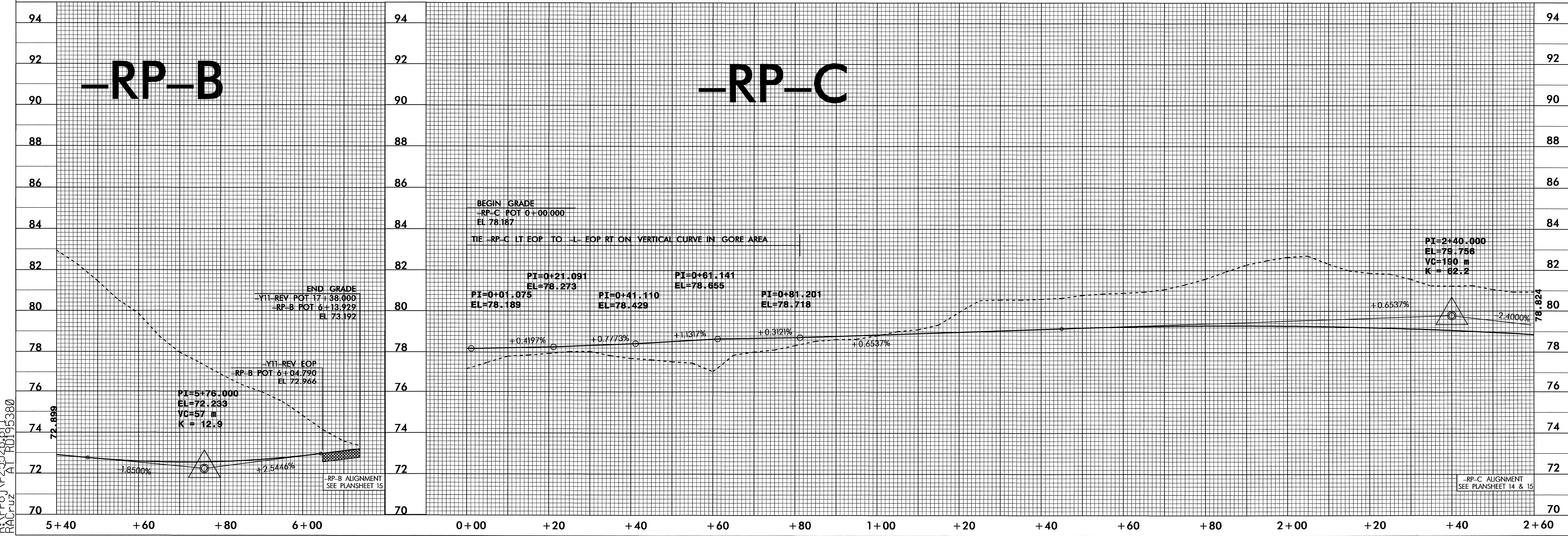
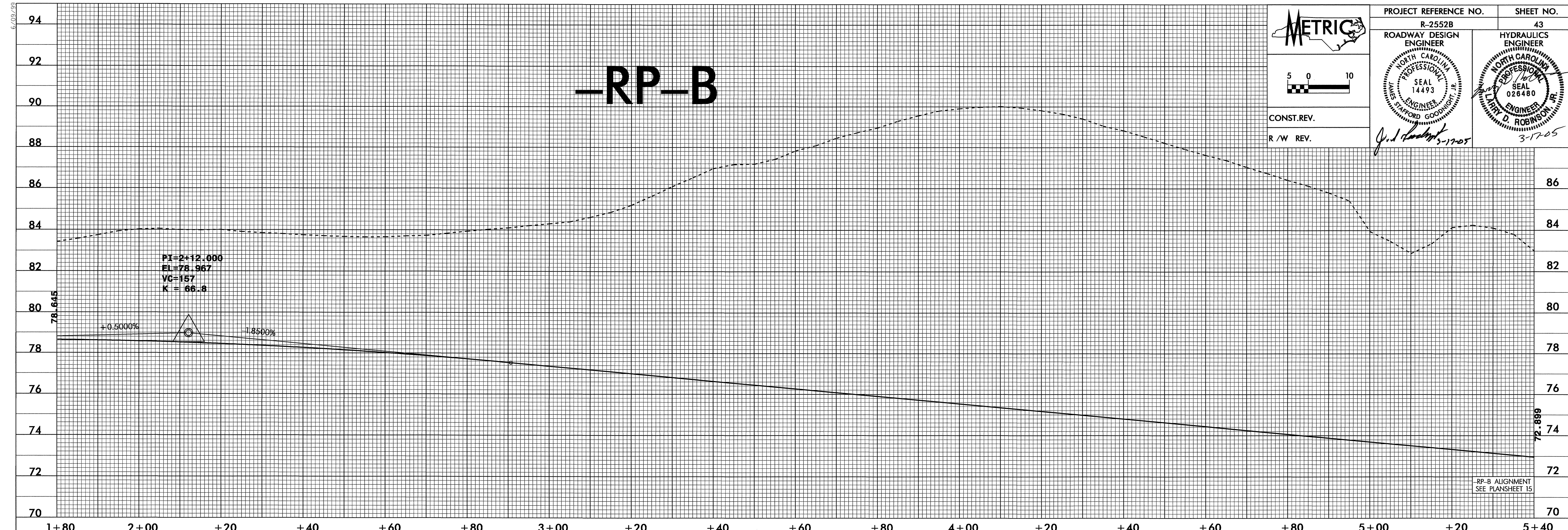


**METRIC**

CONST. REV.  
R / W REV.

PROJECT REFERENCE NO. R-2552B	SHEET NO. 43
ROADWAY DESIGN ENGINEER SEAL 14493 JAMES SAFFORD GOODRIGHT	HYDRAULICS ENGINEER SEAL 026480 MARRY D. ROBINSON

*J. J. Goodright* 3-17-05



31-JAN-2005 14:54  
 P:\PROJ\2552B\RD195380\PLANS\RP-C.dwg  
 RACRUZ AT RD195380