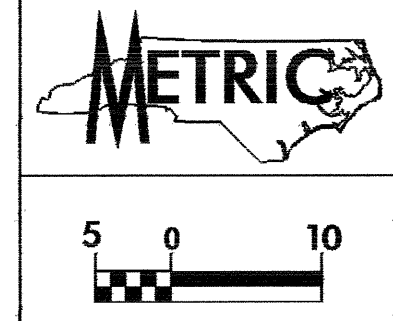


| | |
|-----------------------|---------------|
| PROJECT REFERENCE NO. | SHEET NO. |
| R-2552B | PHASE I EC-14 |
| R/W SHEET NO. | |
| CONST. REV. | |
| R/W REV. | |

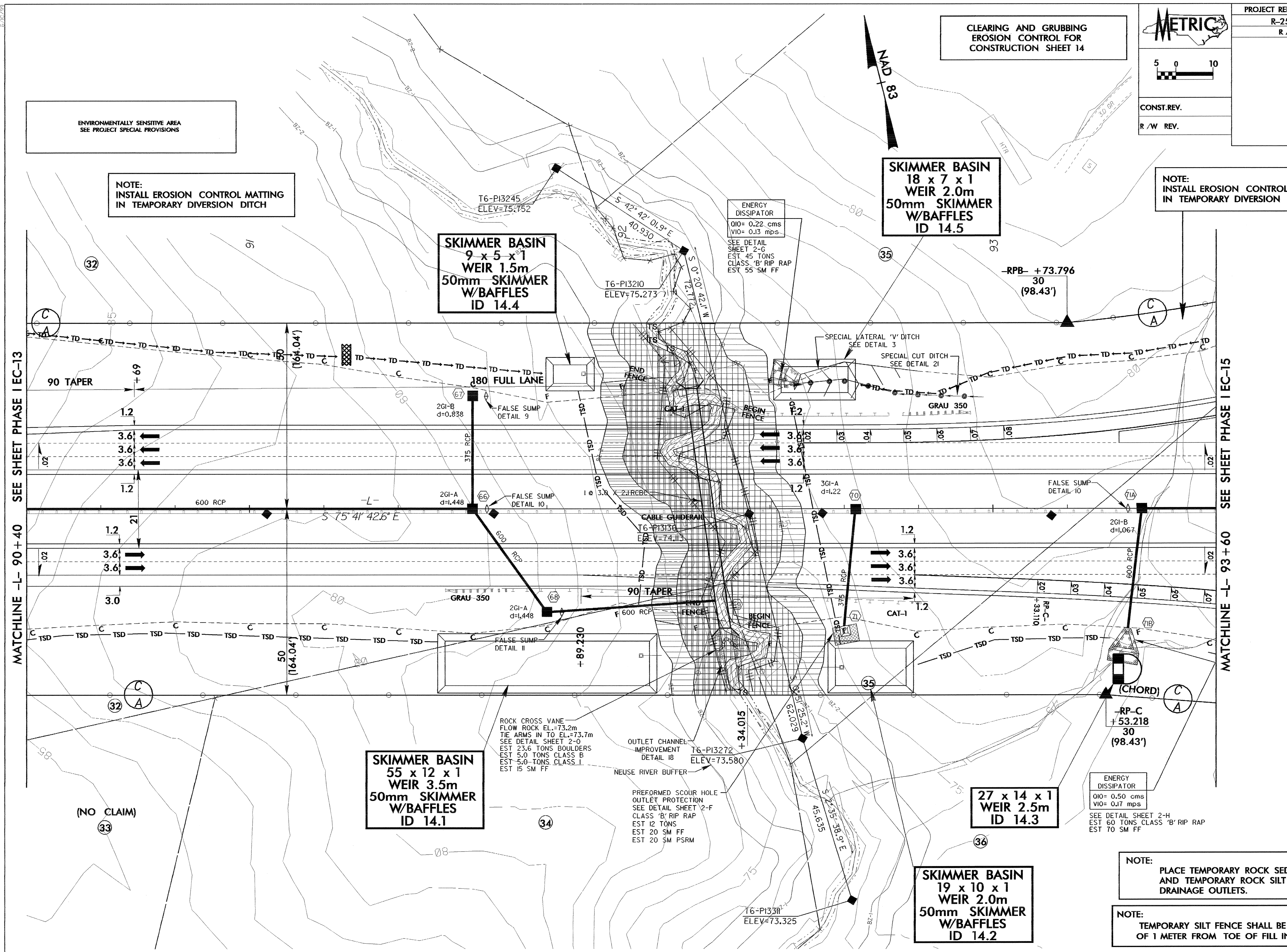


CLEARING AND GRUBBING
EROSION CONTROL FOR
CONSTRUCTION SHEET 14

ENVIRONMENTALLY SENSITIVE AREA
SEE PROJECT SPECIAL PROVISIONS

NOTE:
INSTALL EROSION CONTROL MATTING
IN TEMPORARY DIVERSION DITCH

NOTE:
INSTALL EROSION CONTROL MATTING
IN TEMPORARY DIVERSION DITCH



SKIMMER BASIN
9 x 5 x 1
WEIR 1.5m
50mm SKIMMER
W/BAFFLES
ID 14.4

SKIMMER BASIN
18 x 7 x 1
WEIR 2.0m
50mm SKIMMER
W/BAFFLES
ID 14.5

SKIMMER BASIN
55 x 12 x 1
WEIR 3.5m
50mm SKIMMER
W/BAFFLES
ID 14.1

27 x 14 x 1
WEIR 2.5m
ID 14.3

SKIMMER BASIN
19 x 10 x 1
WEIR 2.0m
50mm SKIMMER
W/BAFFLES
ID 14.2

ENERGY DISSIPATOR
Q10= 0.22 cms
V10= 0.13 mps
SEE DETAIL SHEET 2-G
EST 45 TONS
CLASS 'B' RIP RAP
EST 55 SM FF

ROCK CROSS VANE
FLOW ROCK EL.=73.2m
TIE ARMS IN TO EL.=73.7m
SEE DETAIL SHEET 2-O
EST 23.6 TONS BOULDERS
EST 5.0 TONS CLASS B
EST 5.0 TONS CLASS I
EST 15 SM FF

OUTLET CHANNEL
IMPROVEMENT
DETAIL 18
NEUSE RIVER BUFFER
PREFORMED SCOUR HOLE
OUTLET PROTECTION
SEE DETAIL SHEET 2-F
CLASS 'B' RIP RAP
EST 12 TONS
EST 20 SM FF
EST 20 SM PSRM

ENERGY DISSIPATOR
Q10= 0.50 cms
V10= 0.17 mps
SEE DETAIL SHEET 2-H
EST 60 TONS CLASS 'B' RIP RAP
EST 70 SM FF

NOTE:
PLACE TEMPORARY ROCK SEDIMENT DAMS TYPE-B
AND TEMPORARY ROCK SILT CHECKS TYPE-A AT
DRAINAGE OUTLETS.

NOTE:
TEMPORARY SILT FENCE SHALL BE INSTALLED A MINIMUM
OF 1 METER FROM TOE OF FILL IN WETLAND AREAS

MATCHLINE -L- 90+40 SEE SHEET PHASE I EC-13

MATCHLINE -L- 93+60 SEE SHEET PHASE I EC-15

(NO CLAIM)
33

34

36

T6-P1331
ELEV=73.325

(CHORD)
-RP-C
+53.218
30
(98.43')

180 FULL LANE

90 TAPER

90 TAPER

CABLE GUIDEWAY

SPECIAL LATERAL 'V' DITCH
SEE DETAIL 3

SPECIAL CUT DITCH
SEE DETAIL 21

FALSE SUMP
DETAIL 9

FALSE SUMP
DETAIL 10

FALSE SUMP
DETAIL 11

FALSE SUMP
DETAIL 10

DETAIL 18

DETAIL 18

DETAIL 18

DETAIL 18

DETAIL 18

DETAIL 18

DETAIL 18

DETAIL 18

DETAIL 18

DETAIL 18

DETAIL 18