



PROJECT REFERENCE NO. SHEET NO.

R-2552B PHASE I EC-14A

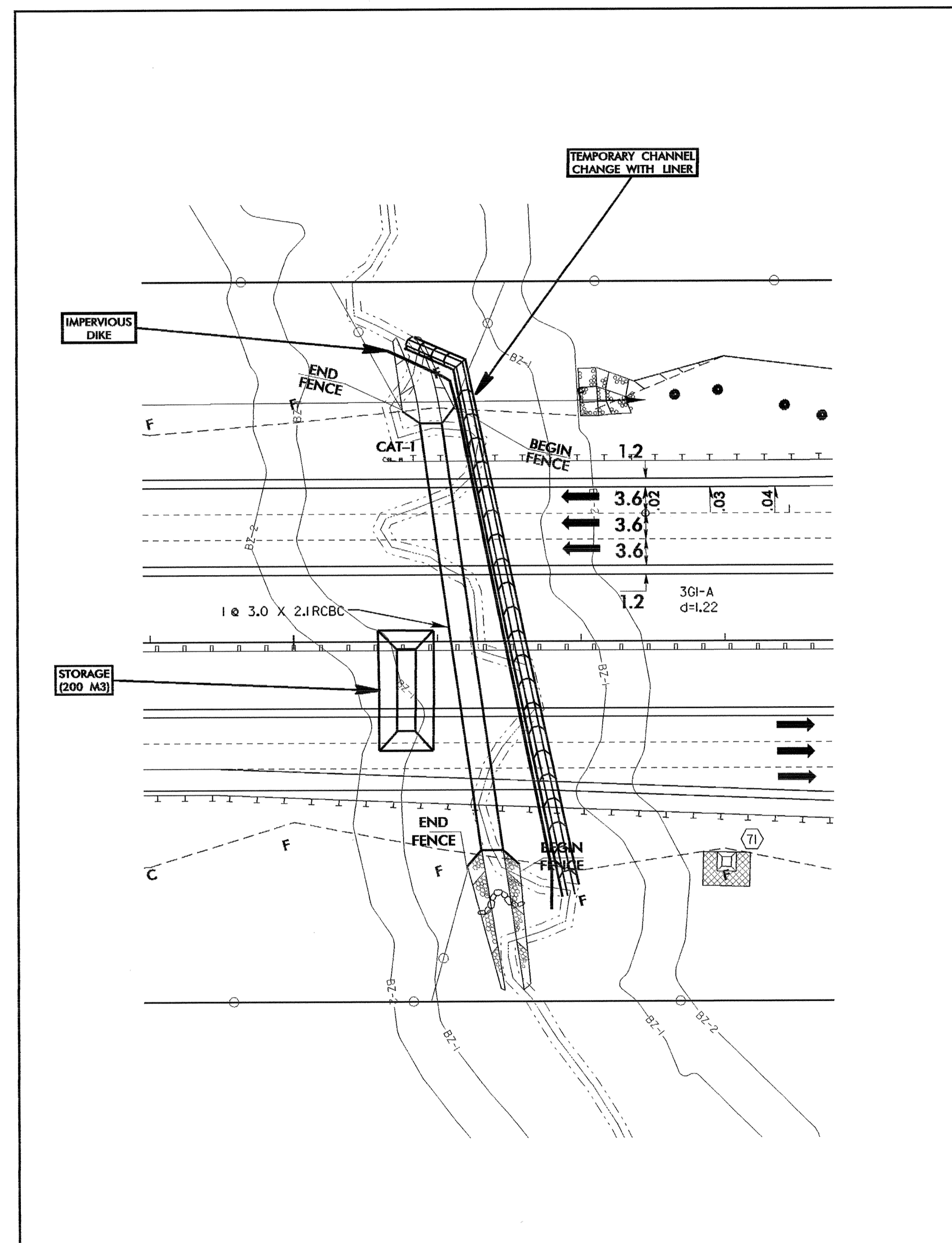
R /W SHEET NO.

ROADWAY DESIGN ENGINEER HYDRAULICS ENGINEER



CONST.REV.

R /W REV.



CULVERT CONSTRUCTION SEQUENCE STA. 92+24 -L-

1. CONSTRUCT STILLING BASIN (200 M3).
2. CONSTRUCT TEMPORARY CHANNEL CHANGE WITH LINER (BASE = 2M, SIDE SLOPES = 1.5:1, DEPTH = 1.2M).
3. INSTALL IMPERVIOUS DIKE APPROXIMATELY 3M MINIMUM FROM THE UPSTREAM AND DOWNSTREAM WINGWALLS.
4. CONSTRUCT THE 1 @ 3.0M X 2.1M RCBC, WINGWALLS, AND UPSTREAM AND DOWNSTREAM CHANNEL IMPROVEMENTS PLACING RIP RAP ON THE CHANNEL BANKS.
5. REMOVE IMPERVIOUS DIKE AND FILL TEMPORARY CHANNEL CHANGE WITH LINER.
6. DIVERT WATER THROUGH 1 @ 3.0M X 2.1M RCBC.
7. COMPLETE ROADWAY CONSTRUCTION.