
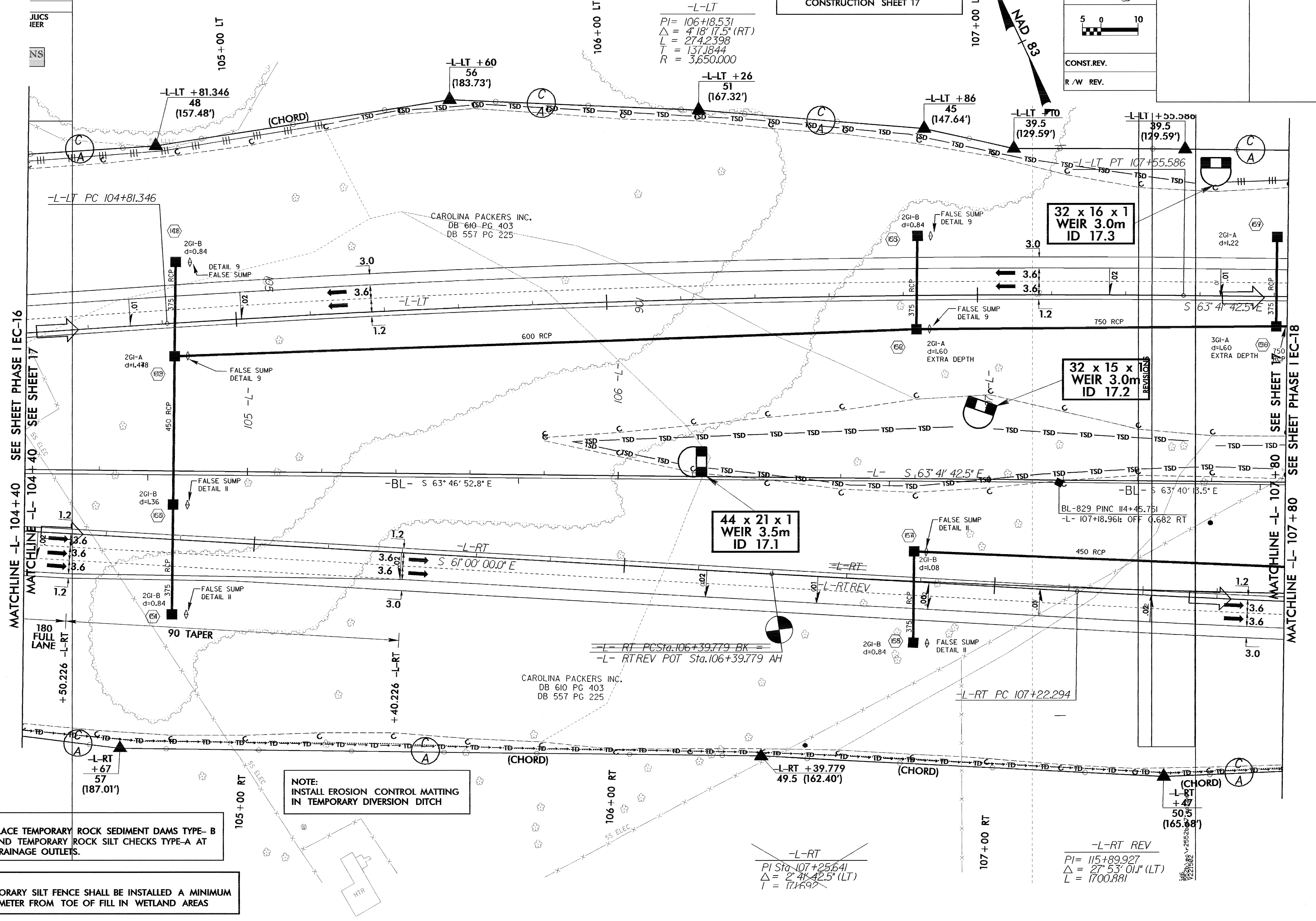


6.10.2018

NET NO.
16
JULICS
KEER
NS

CLEARING AND GRUBBING
EROSION CONTROL FOR
CONSTRUCTION SHEET 17

 5 0 10 CONST.REV. R/W REV.	PROJECT REFERENCE NO. R-2552B	SHEET NO. PHASE I EC-17
	R/W SHEET NO.	



NOTE:
PLACE TEMPORARY ROCK SEDIMENT DAMS TYPE- B
AND TEMPORARY ROCK SILT CHECKS TYPE-A AT
DRAINAGE OUTLETS.

NOTE:
TEMPORARY SILT FENCE SHALL BE INSTALLED A MINIMUM
OF 1 METER FROM TOE OF FILL IN WETLAND AREAS

NOTE:
INSTALL EROSION CONTROL MATTING
IN TEMPORARY DIVERSION DITCH

-L-LT
 $PI = 106+18.531$
 $\Delta = 4' 18' 17.5'' (RT)$
 $L = 274.2398$
 $T = 137.1844$
 $R = 3,650.000$

-L-RT PC Sta. 106+39.779 BK =
 -L-RTREV POT Sta. 106+39.779 AH

-L-RT
 $PI Sta. 107+25.641$
 $\Delta = 2' 41' 42.5'' (LT)$
 $L = 171.692$

-L-RT REV
 $PI = 115+89.927$
 $\Delta = 27' 53' 01'' (LT)$
 $L = 1700.881$

MATCHLINE -L- 104 +40 SEE SHEET PHASE I EC-16
 MATCHLINE -L- 107 +80 SEE SHEET PHASE I EC-18