
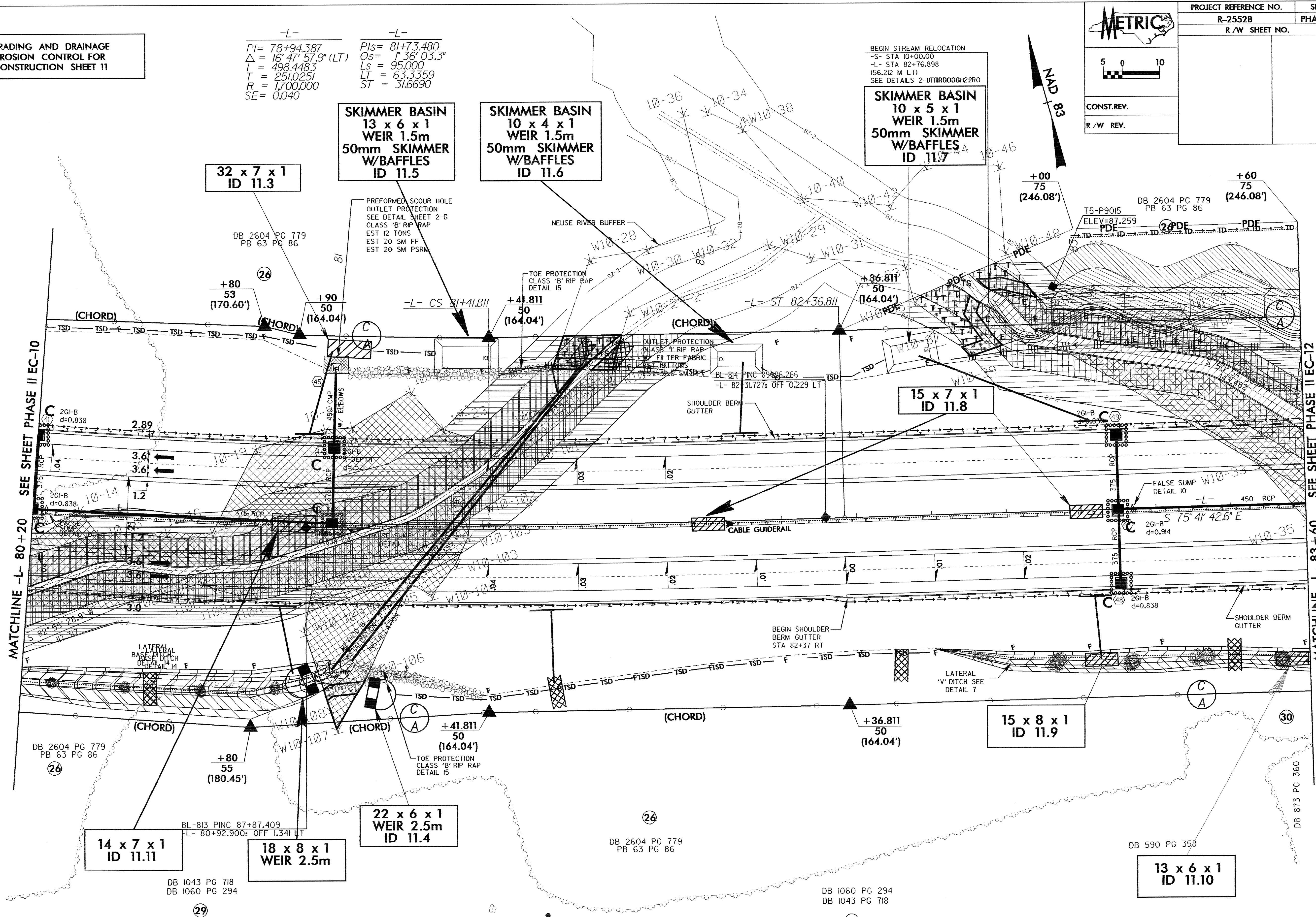


GRADING AND DRAINAGE  
EROSION CONTROL FOR  
CONSTRUCTION SHEET 11

-L-  
 $P1s = 78+94.387$   
 $\Delta = 16' 47" 57.9" (LT)$   
 $L = 498.4483$   
 $T = 251.0251$   
 $R = 1,700.000$   
 $SE = 0.040$

-L-  
 $P1s = 81+73.480$   
 $\Delta = 17' 36" 03.3"$   
 $Ls = 95.000$   
 $LT = 63.3359$   
 $ST = 31.6690$

 5 0 10 CONST. REV. R/W REV.	PROJECT REFERENCE NO.	SHEET NO.
	R-2552B	PHASE II EC-11
	R/W SHEET NO.	



NOTE:  
 TEMPORARY SILT FENCE SHALL BE INSTALLED A MINIMUM  
 OF 1 METER FROM TOE OF FILL IN WETLAND AREAS