

PROJECT REFERENCE NO.	SHEET NO.
R-2552B	PHASE II EC-24
R/W SHEET NO.	

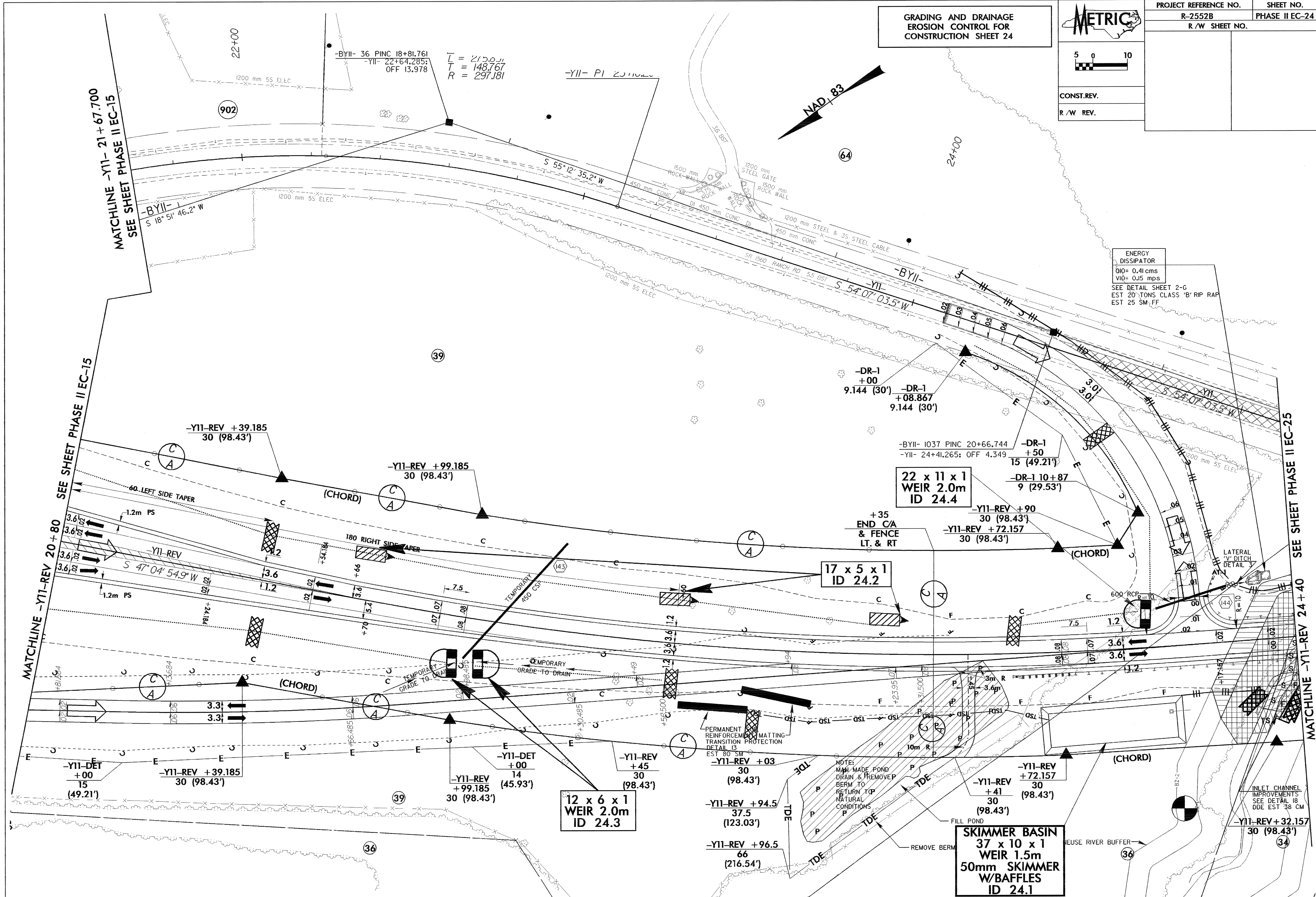
METRIC

5 0 10

CONST. REV.

R/W REV.

GRADING AND DRAINAGE
EROSION CONTROL FOR
CONSTRUCTION SHEET 24



ENERGY DISSIPATOR
 $V_{10} = 0.41 \text{ cms}$
 $V_{10} = 0.15 \text{ mps}$
 SEE DETAIL SHEET 2-G
 EST 20 TONS CLASS 'B' RIP RAP
 EST 25 SM.FF

22 x 11 x 1
WEIR 2.0m
ID 24.4

17 x 5 x 1
ID 24.2

12 x 6 x 1
WEIR 2.0m
ID 24.3

SKIMMER BASIN
37 x 10 x 1
WEIR 1.5m
50mm SKIMMER
W/BAFFLES
ID 24.1

MATCHLINE -Y11- 21 + 67.700
SEE SHEET PHASE II EC-15

MATCHLINE -Y11-REV 20 + 80
SEE SHEET PHASE II EC-15

MATCHLINE -Y11-REV 24 + 40
SEE SHEET PHASE II EC-25

INLET CHANNEL
IMPROVEMENTS
SEE DETAIL 18
DDE EST 38 CM

NOTES:
 1. MAN-MADE POND
 DRAIN & REMOVE P
 BERM TO RETURN TO
 NATURAL CONDITIONS

-BY11- 36 PINC 18+81.761
 -Y11- 22+64.285;
 OFF 13.978
 $L = 215.04$
 $T = 148.767$
 $R = 297.181$

-BY11-
 S 18° 51' 46.2" W

-Y11- P1 23.110

NAD 83

60 LEFT SIDE TAPER

180 RIGHT SIDE TAPER

TEMPORARY
GRADE TO DRAIN

TEMPORARY
GRADE TO DRAIN

PERMANENT
REINFORCEMENT MATTING
TRANSITION PROTECTION
DETAIL 13
EST 80 SM

FILL POND

REMOVE BERM

NEUSE RIVER BUFFER

-Y11-DET +00
15 (49.21')

-Y11-REV +39.185
30 (98.43')

-Y11-REV +99.185
30 (98.43')

-Y11-DET +00
14 (45.93')

-Y11-REV +45
30 (98.43')

-Y11-REV +03
30 (98.43')

-Y11-REV +94.5
37.5 (123.03')

-Y11-REV +96.5
66 (216.54')

-Y11-REV +72.157
30 (98.43')

-Y11-REV +41
30 (98.43')

-Y11-REV +32.157
30 (98.43')

-DR-1 +00
9.144 (30')

-DR-1 +08.867
9.144 (30')

-BY11- 1037 PINC 20+66.744
-Y11- 24+41.265; OFF 4.349

-DR-1 +50
15 (49.21')

-DR-1 10+87
9 (29.53')

-Y11-REV +90
30 (98.43')

-Y11-REV +72.157
30 (98.43')

LATERAL
DITCH
DETAIL 3

INLET CHANNEL
IMPROVEMENTS
SEE DETAIL 18
DDE EST 38 CM