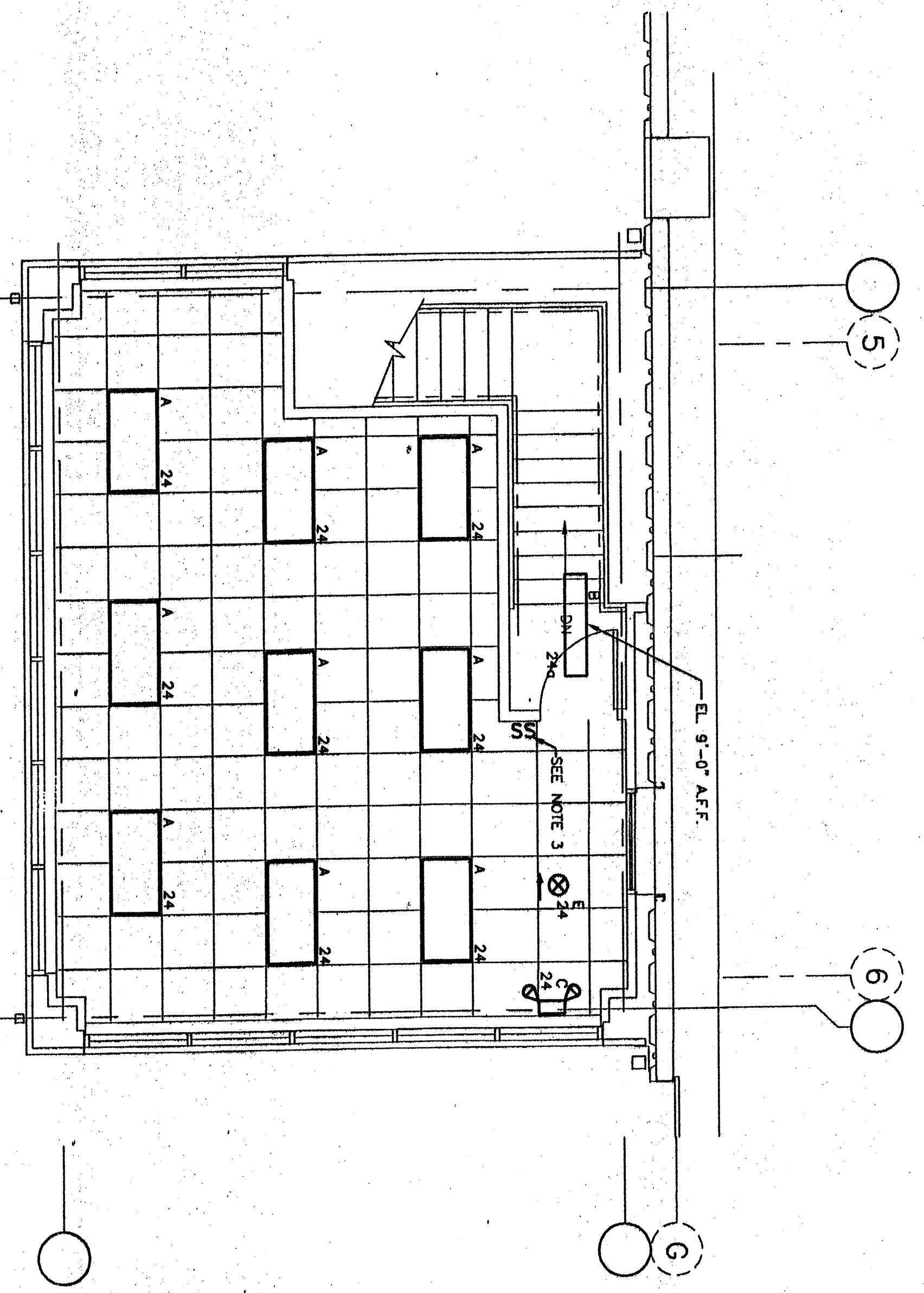
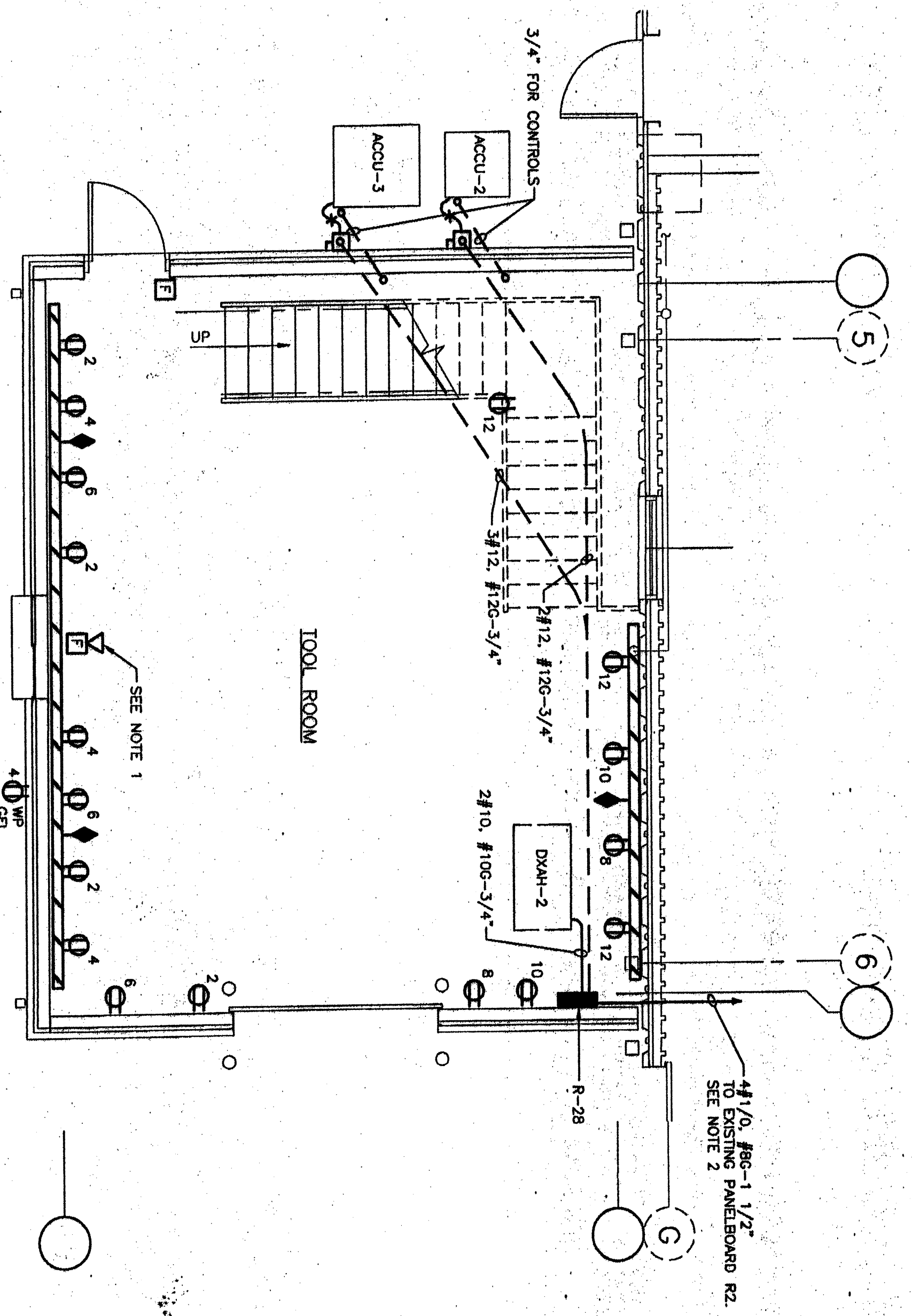


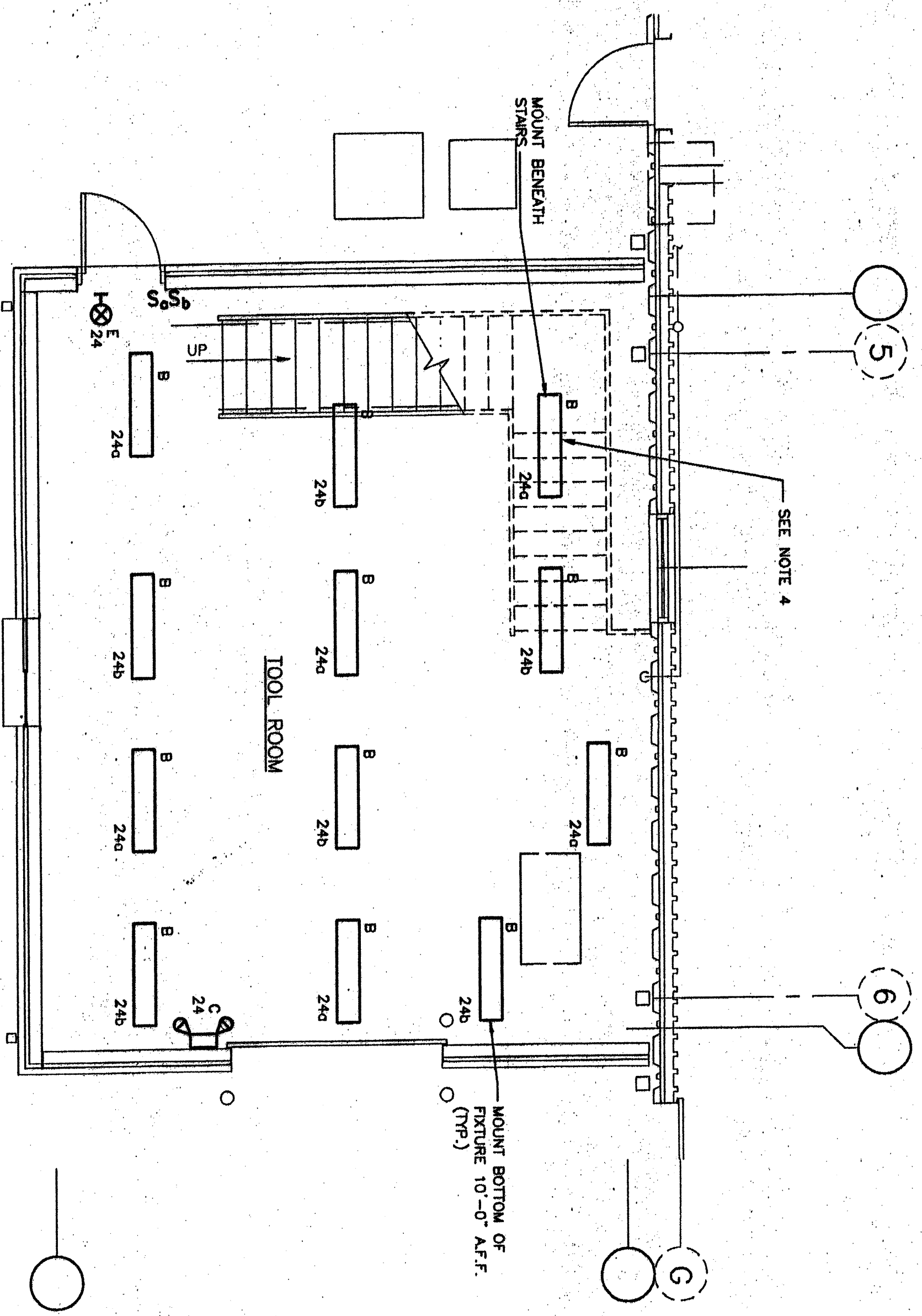
SECOND FLOOR OBSERVATION ROOM  
FIRE ALARM PLAN  
SCALE: 1/4" = 1'-0"



SECOND FLOOR  
OBSERVATION ROOM  
LIGHTING PLAN  
SCALE: 1/4" = 1'-0"

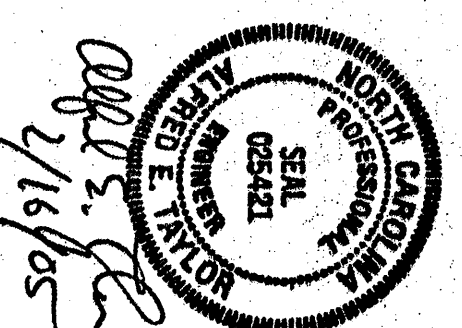


FIRST FLOOR TOOL ROOM  
POWER, COMMUNICATIONS &  
FIRE ALARM PLAN  
SCALE: 1/4" = 1'-0"



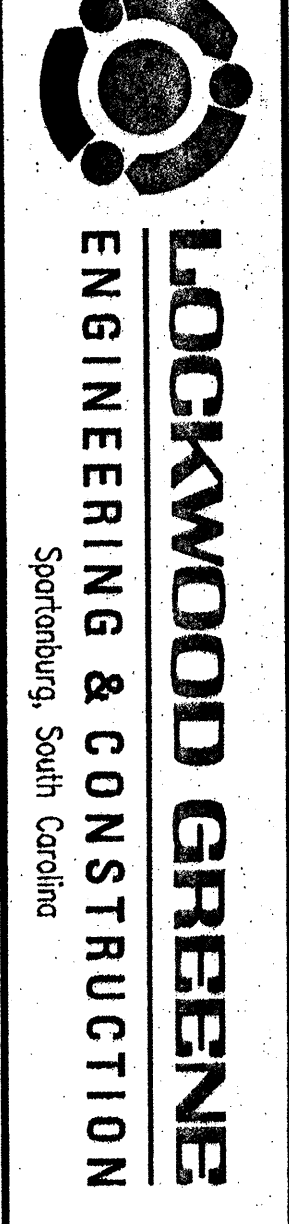
FIRST FLOOR TOOL ROOM  
LIGHTING PLAN  
SCALE: 1/4" = 1'-0"

- NOTES:
1. CONNECT FIRE ALARM PULL STATIONS & HORN/SIRENS IN NEW ADDITION TO EXISTING WIRING.
  2. PROVIDE 3 FIRE ALARM 1000 AMP 240 VOLT RATED CIRCUIT BREAKER WITH MINIMUM 10000 AMP RATING AND INSTALL IN EXISTING PANELBOARD R2, C.T. 34, 35, 36, 38 ROUTE CONDUIT ABOVE CONDUIT IN WAREHOUSE.
  3. CONNECT EXISTING WIRING TO OTHER SWITCH.
  4. CONNECT ALL WIRING TO EXISTING PANELBOARD L1, C.T. 24 IN WAREHOUSE. PROVIDE SINGLE POLE, 20 AMP, 120 VOLT CIRCUIT BREAKER WITH SAME RATING AND INSTALLED IN EXISTING PANELBOARD L1, C.T. 24. CONNECT EMERGENCY LIGHTS AND EXIT SIGNS AHEAD OF SWITCHING.
  5. PROVIDE 3/4" CONDUIT WITH PULL WIRE FROM DATA STUD-O-UT ABOVE CONDUIT RAIS.



NO.	DATE	DESCRIPTION	BY	CHK.
0	16-FEB-2005	ISSUED FOR BID/CONSTRUCTION - STAGE 1 PACKAGE	JMS	JMS

DESIGNED BY	J. SHAW
CHECKED BY	E.G. HEINRICH
DATE	



MAIN BUILDING ADDITION  
LIGHTING AND POWER PLANS

PHASE VII  
MARINE MAINTENANCE FACILITY  
NORTH CAROLINA DEPARTMENT OF TRANSPORTATION  
MANN'S HARBOR, NC

PROJECT NO.	019064	REV. NO.	0
PROJECT NAME	E0000709	DATE	E-709