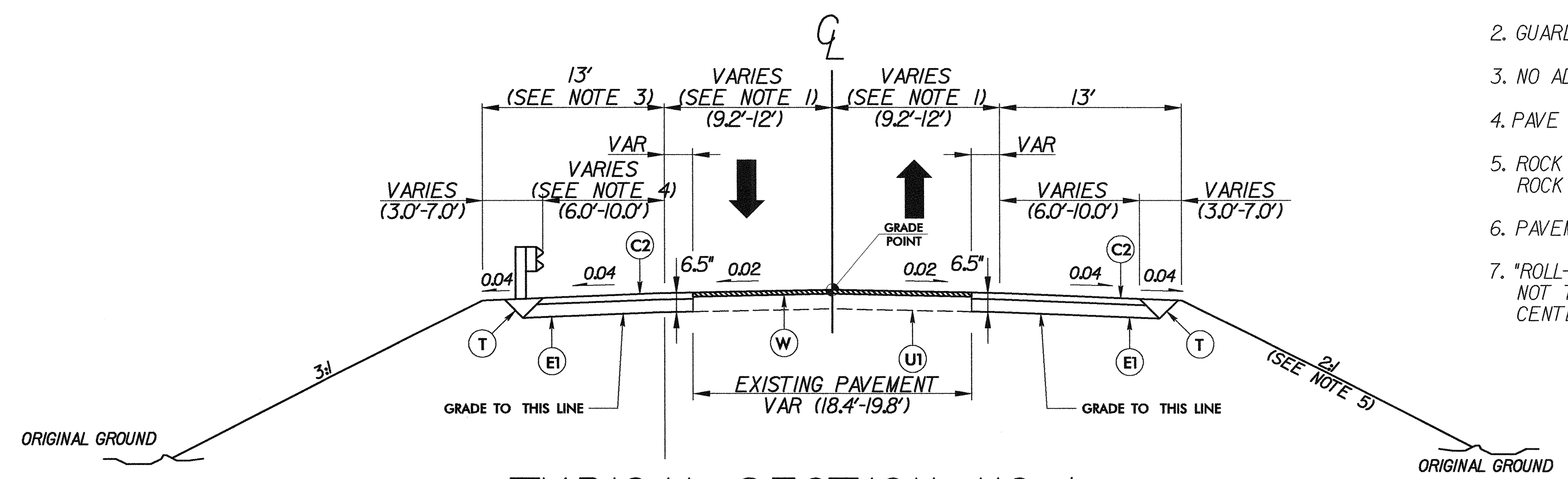


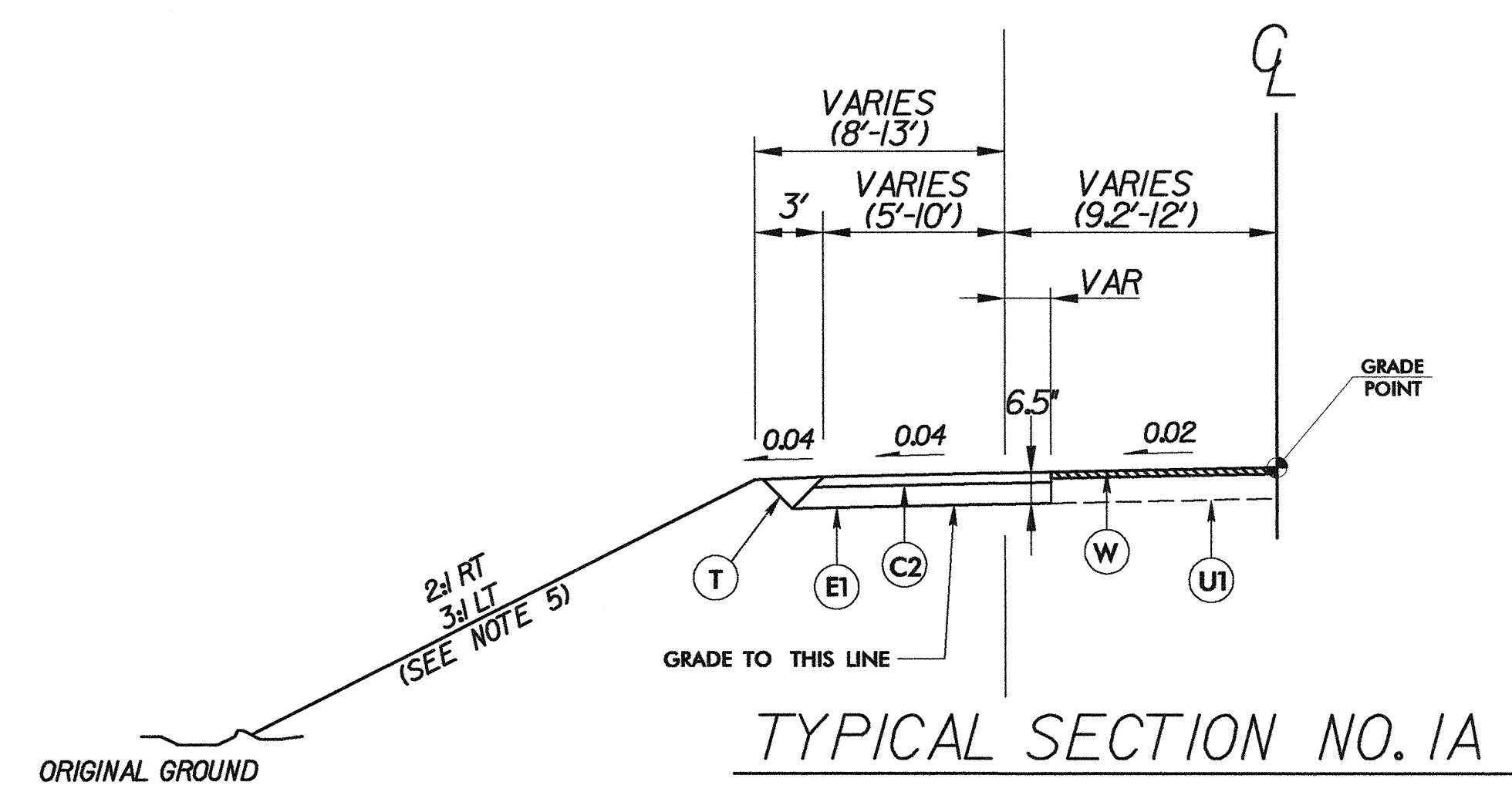
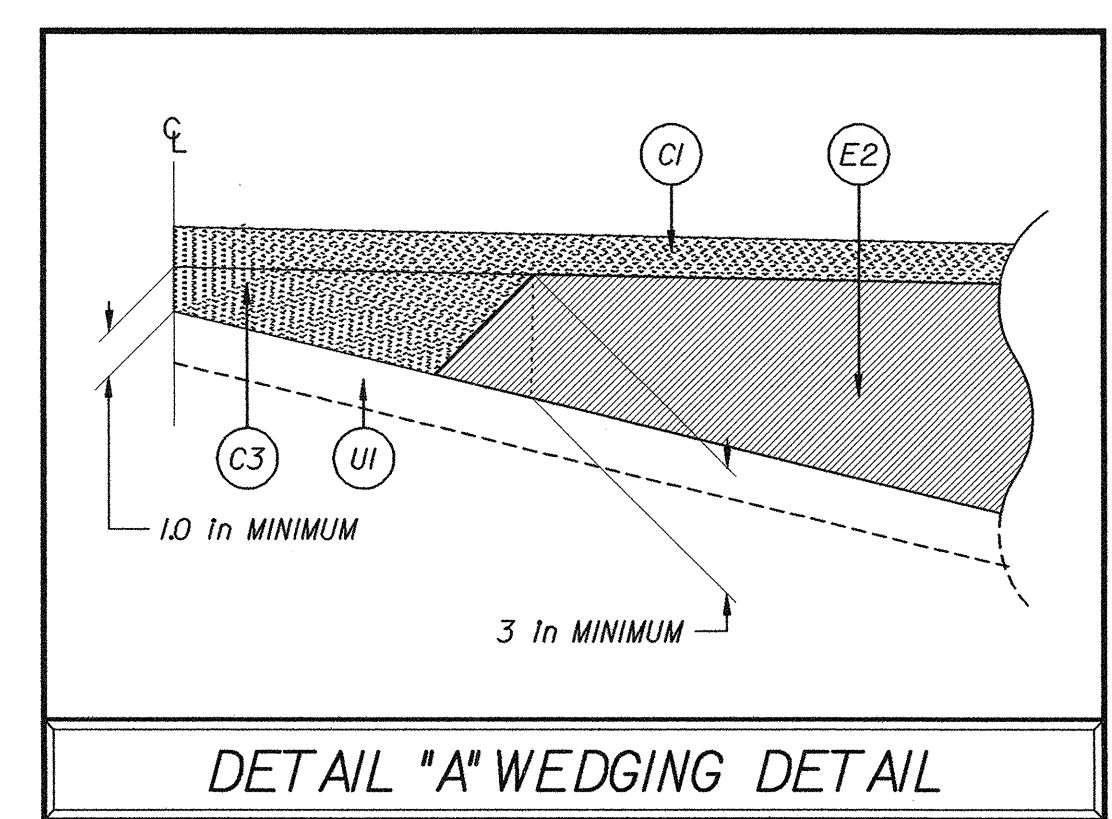
NOTES:

1. TRAVEL LANES ARE 12 FT FROM STA 21+05.00 TO STA 27+35.00
2. GUARDRAIL TO BE PLACED AS SHOWN IN PLAN VIEW
3. NO ADDITIONAL WIDENING REQUIRED FOR GUARDRAIL
4. PAVE TO FACE OF GUARDRAIL
5. ROCK PLATING TO BE PLACED AS SHOWN IN PLAN VIEW (SEE ROCK PLATING DETAIL SHEET 2A).
6. PAVEMENT EDGE SLOPES ARE 1:1 UNLESS SHOWN OTHERWISE
7. "ROLL-OVER" ALGEBRAIC DIFFERENCE IN RATES OF CROSS SLOPE NOT TO EXCEED 0.06. IF SUPERELEVATION IS REVOLVED ABOUT CENTERLINE OF PAVEMENT, SAME APPLIES.



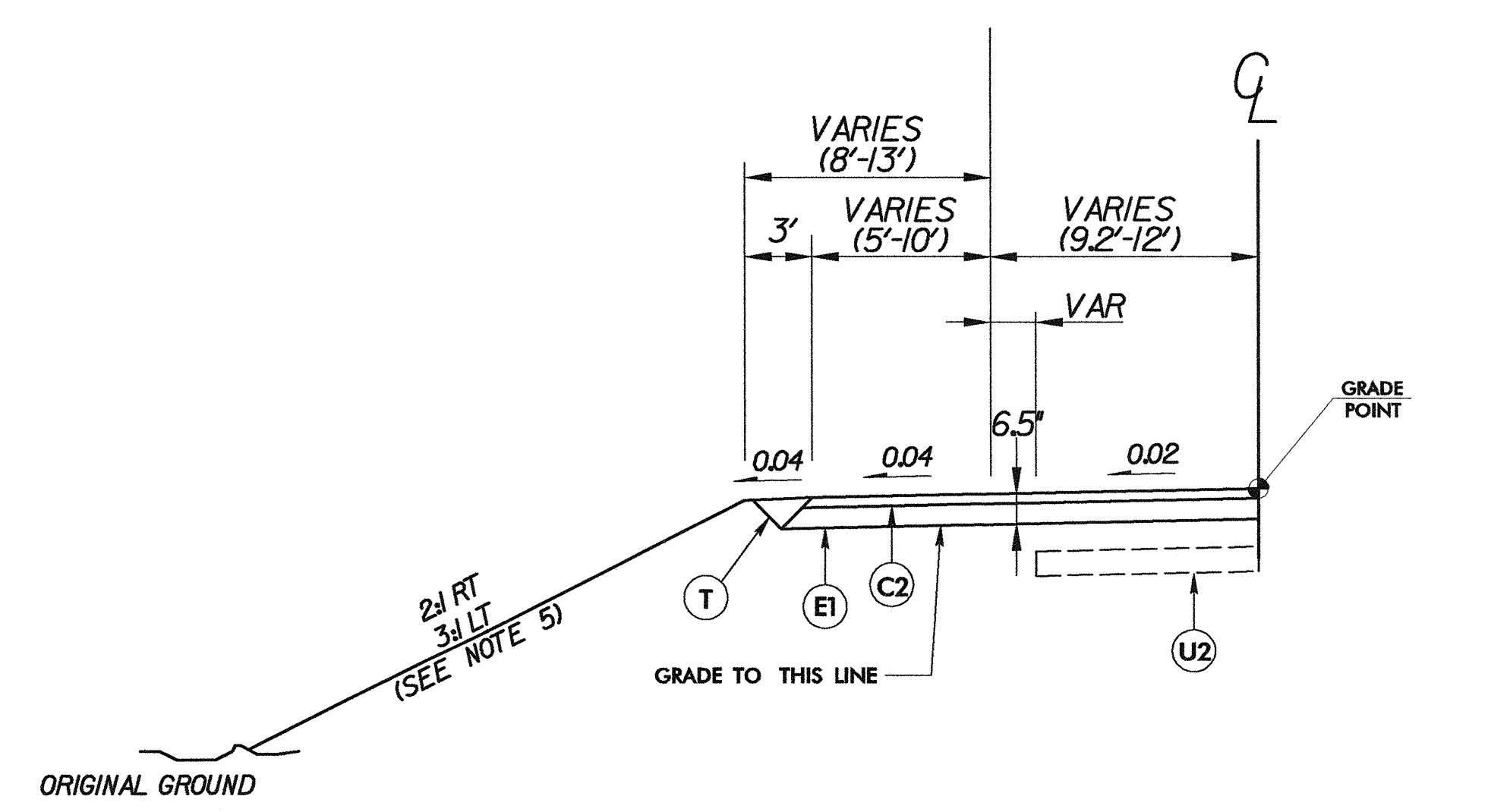
USE TYPICAL SECTION NO. 1:

- L- STA 19+65.00 TO -L- STA 21+04.00
- L- STA 26+99.50 TO -L- STA 28+70.00



USE TYPICAL SECTION NO. 1A IN CONJUNCTION WITH TYPICAL SECTION NO. 1 AS FOLLOWS:

- L- STA 19+65.00 TO -L- STA 20+95.00 LT
- L- STA 19+65.00 TO -L- STA 21+04.00 RT
- L- STA 27+30.00 TO -L- STA 28+70.00 LT
- L- STA 27+40.00 TO -L- STA 28+70.00 RT



USE TYPICAL SECTION NO. 2A IN CONJUNCTION WITH TYPICAL SECTION NO. 2 AS FOLLOWS:

- L- STA 21+04.00 TO -L- STA 22+00.00 LT
- L- STA 21+04.00 TO -L- STA 22+00.00 RT
- L- STA 25+46.00 TO -L- STA 26+99.50 LT
- L- STA 25+46.00 TO -L- STA 26+99.50 RT

PAVEMENT SCHEDULE	
C1	PROP. APPROX. 1 1/4" ASPHALT CONCRETE SURFACE COURSE, TYPE SF9.5A, AT AN AVERAGE RATE OF 137.5 LBS. PER SQ. YD.
C2	PROP. APPROX. 2 1/4" ASPHALT CONCRETE SURFACE COURSE, TYPE SF9.5A, AT AN AVERAGE RATE OF 137.5 LBS. PER SQ. YD. IN EACH OF TWO LAYERS.
C3	PROP. VAR. DEPTH ASPHALT CONCRETE SURFACE COURSE, TYPE SF9.5A AT AN AVERAGE RATE OF 110 LBS. PER SQ. YD. PER 1" DEPTH BE PLACED IN LAYERS NOT LESS THAN 1" IN DEPTH OR GREATER THAN 1 1/2" IN DEPTH.
E1	PROP. APPROX. 4" ASPHALT CONCRETE BASE COURSE, TYPE B25.0B, AT AN AVERAGE RATE OF 456 LBS. PER SQ. YD.
E2	PROP. VAR. DEPTH ASPHALT CONCRETE BASE COURSE, TYPE B25.0B, AT AN AVERAGE RATE OF 114 LBS. PER SQ. YD. PER 1" DEPTH TO BE PLACED IN LAYERS NOT LESS THAN 3" IN DEPTH OR GREATER THAN 5 1/2" IN DEPTH.
J	PROP. 8" AGGREGATE BASE COURSE.
R	SHOULDER BERM GUTTER.
T	EARTH MATERIAL.
U1	EXISTING PAVEMENT.
U2	EXISTING PAVEMENT - SCARIFIED.
W	VARIABLE DEPTH ASPHALT PAVEMENT (SEE DETAIL "A" - WEDGING DETAIL - THIS SHEET)

7/2/99
 04/12/2004
 I:\Borwick\Projects\0910017.001-B3445\Plan\English\b3445.txd
 12:55:20 PM