

7/2/99

NOTE:
 1. NCDOT HAS AGREED TO THE SPECIAL COMMITMENT THAT NO IN-WATER WORK WILL BE CONDUCTED BETWEEN MARCH 31 AND SEPTEMBER 30 IN ORDER TO AVOID NEGATIVE IMPACTS TO SPawning POPULATIONS OF FISH SPECIES AT THIS PROJECT SITE.
 2. SEE SHEET 2 FOR ROCK PLATING DETAIL.
 3. SEE SHEET 2B FOR UNDERCUT LIMITS AND DETAIL.
 4. ANY RELOCATION OF EXISTING UTILITIES WILL BE ACCOMPLISHED BY OTHERS.
 5. UNDERCUT LIMITS SHOULD NOT EXTEND BEYOND THE PROJECT TEMPORARY CONSTRUCTION EASEMENT LIMITS.
 6. SHEETING ON NORTH (BAY) SIDE OF BRIDGE SHALL BE REMOVED AFTER INSTALLATION OF ROCK PLATING.
 7. SHEETING ON SOUTH (MARSH) SIDE OF BRIDGE SHALL BE RETAINED AFTER COMPLETION OF CONSTRUCTION.

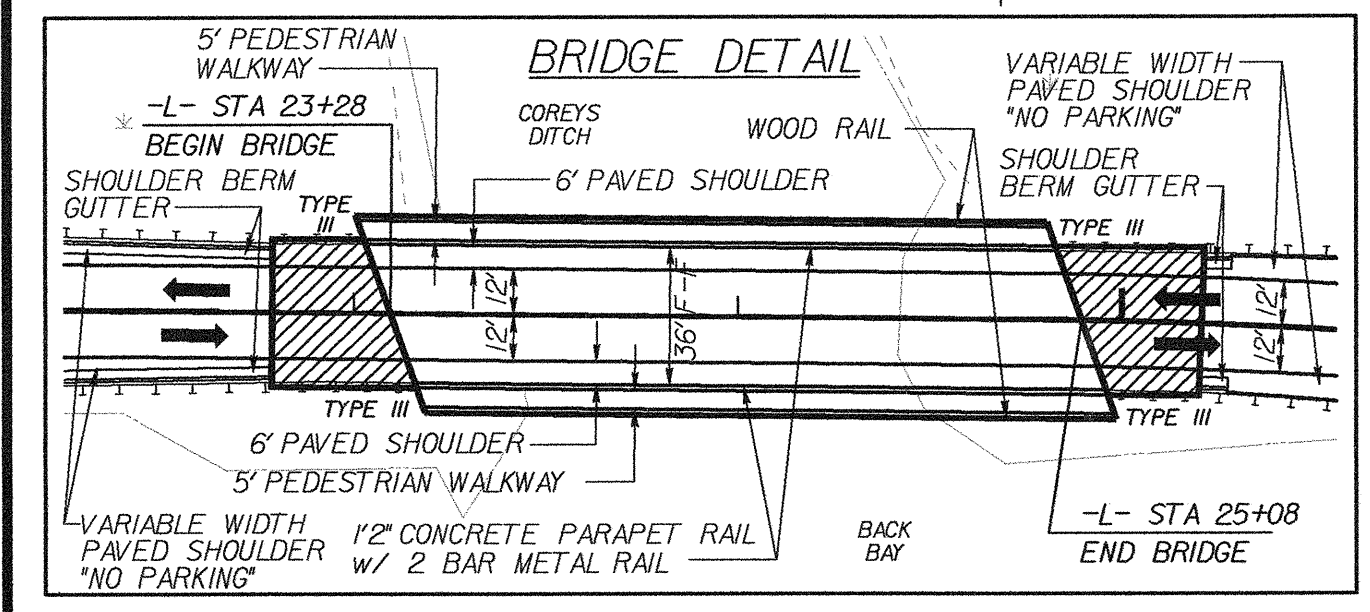
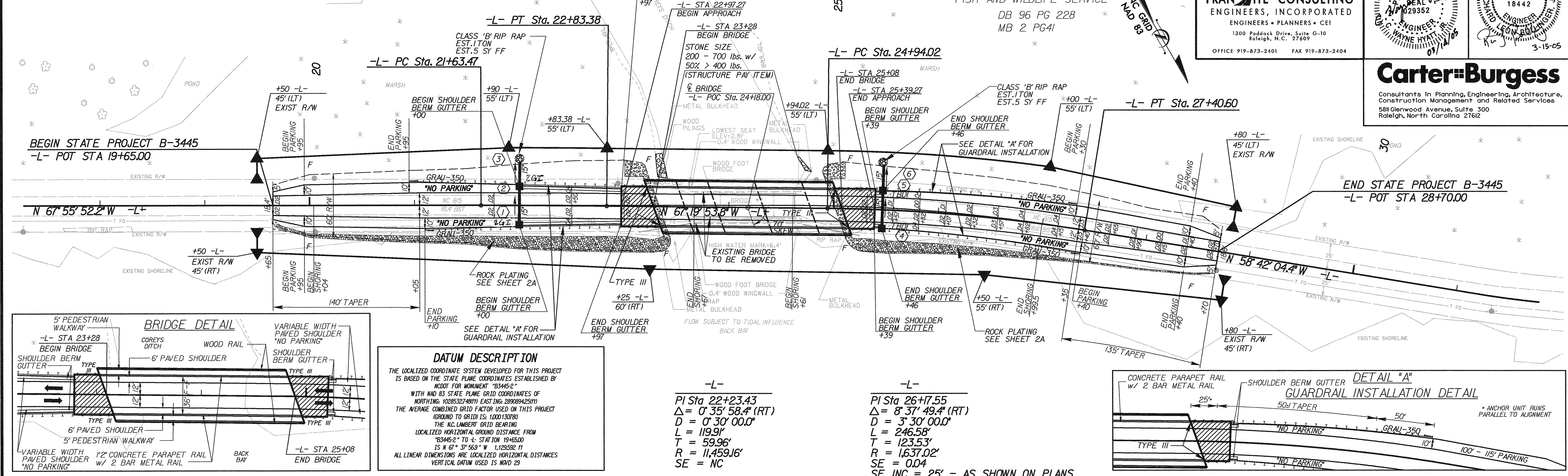
SEE SHEETS S-1 THRU S-43 FOR STRUCTURE PLANS

UNITED STATES DEPARTMENT OF THE INTERIOR
 FISH AND WILDLIFE SERVICE
 DB 96 PG 228
 MB 2 PG41

TRAN SITE CONSULTING
 ENGINEERS • PLANNERS • CEI
 1300 Paddock Drive, Suite G-10
 Raleigh, N.C. 27609
 OFFICE 919-873-2401 FAX 919-873-2404

PROJECT REFERENCE NO. B-3445	SHEET NO. 4
RW SHEET NO.	
ROADWAY DESIGN ENGINEER	HYDRAULICS ENGINEER

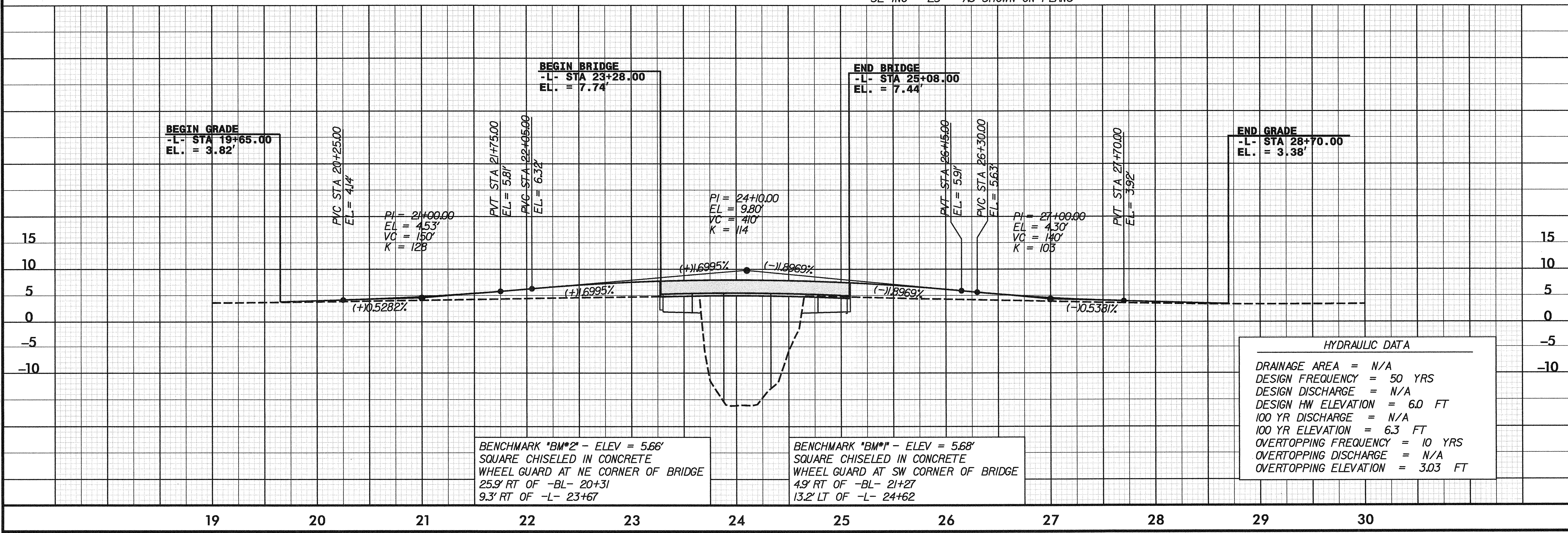
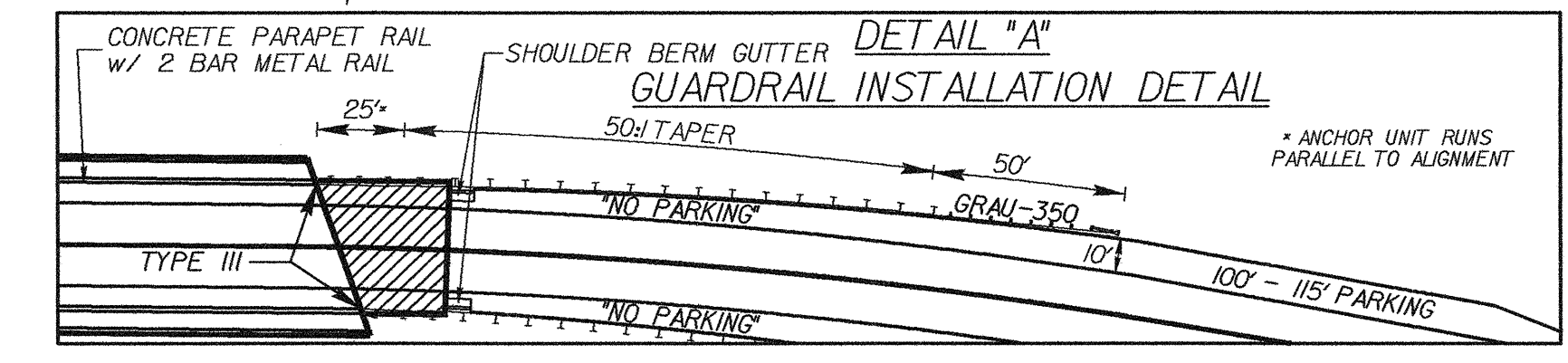
Carter-Burgess
 Consultants in Planning, Engineering, Architecture, Construction Management and Related Services
 581 Glenwood Avenue, Suite 300
 Raleigh, North Carolina 27612



DATUM DESCRIPTION
 THE LOCALIZED COORDINATE SYSTEM DEVELOPED FOR THIS PROJECT IS BASED ON THE STATE PLANE COORDINATES ESTABLISHED BY NCDOT FOR MONUMENT '834452' WITH NAD 83 STATE PLANE GRID COORDINATES OF NORTING: 1026532748(1) EASTING: 289089425(1) THE AVERAGE COMBINED GRID FACTOR USED ON THIS PROJECT (GROUND TO GRID) IS: 1.000130780 THE N.C. LAMBERT GRID BEARING LOCALIZED HORIZONTAL GROUND DISTANCE FROM '834452' TO -L- STATION 19+65.00 IS N 67° 37' 56.9" W 1.129592 (1) ALL LINEAR DIMENSIONS ARE LOCALIZED HORIZONTAL DISTANCES VERTICAL DATUM USED IS NAVD 29

-L-
 PI Sta 22+23.43
 $\Delta = 0' 35' 58.4" (RT)$
 $D = 0' 30' 00.0"$
 $L = 119.9'$
 $T = 59.96'$
 $R = 11,459.16'$
 $SE = NC$

-L-
 PI Sta 26+17.55
 $\Delta = 8' 37' 49.4" (RT)$
 $D = 3' 30' 00.0"$
 $L = 246.58'$
 $T = 123.53'$
 $R = 1,637.02'$
 $SE = 0.04$
 $SE INC = 25' - AS SHOWN ON PLANS$



HYDRAULIC DATA
 DRAINAGE AREA = N/A
 DESIGN FREQUENCY = 50 YRS
 DESIGN DISCHARGE = N/A
 DESIGN HW ELEVATION = 6.0 FT
 100 YR DISCHARGE = N/A
 100 YR ELEVATION = 6.3 FT
 OVERTOPPING FREQUENCY = 10 YRS
 OVERTOPPING DISCHARGE = N/A
 OVERTOPPING ELEVATION = 3.03 FT

1:20:26 PM Projecta\0500017.001-B3445\1\log\Eng\ish\B3445s04.psh 3/14/2008