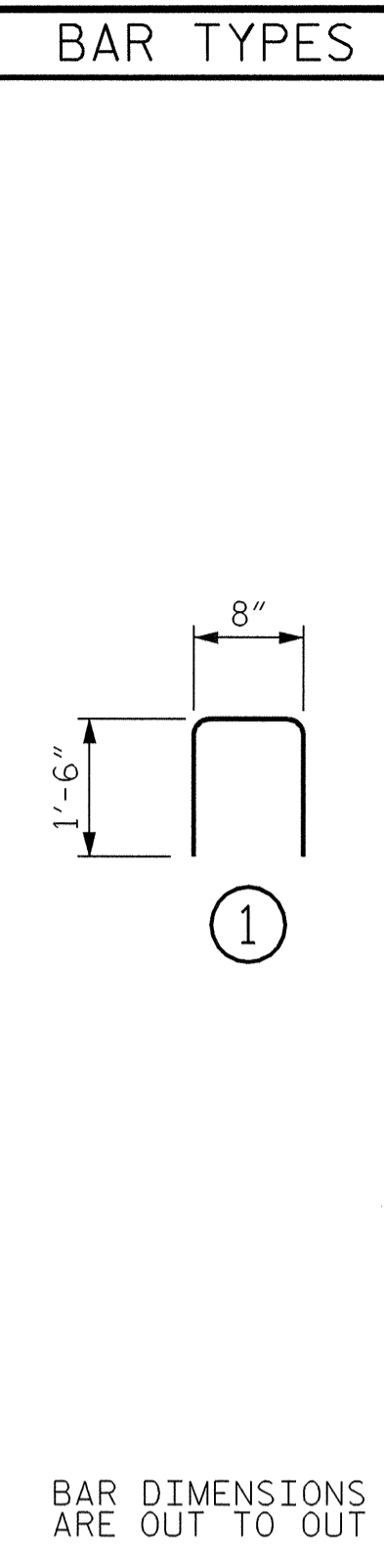


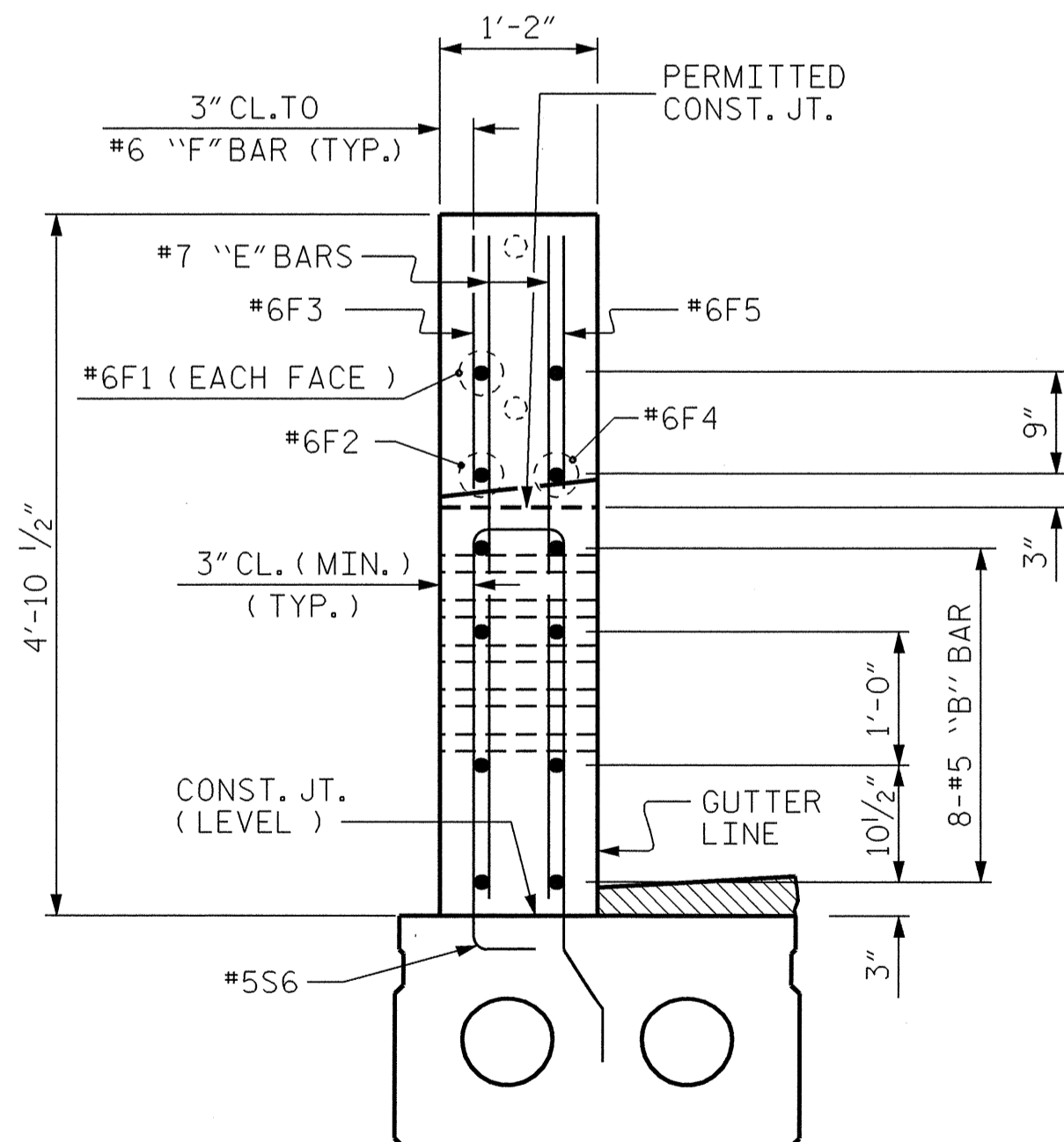
PLAN OF PARAPET



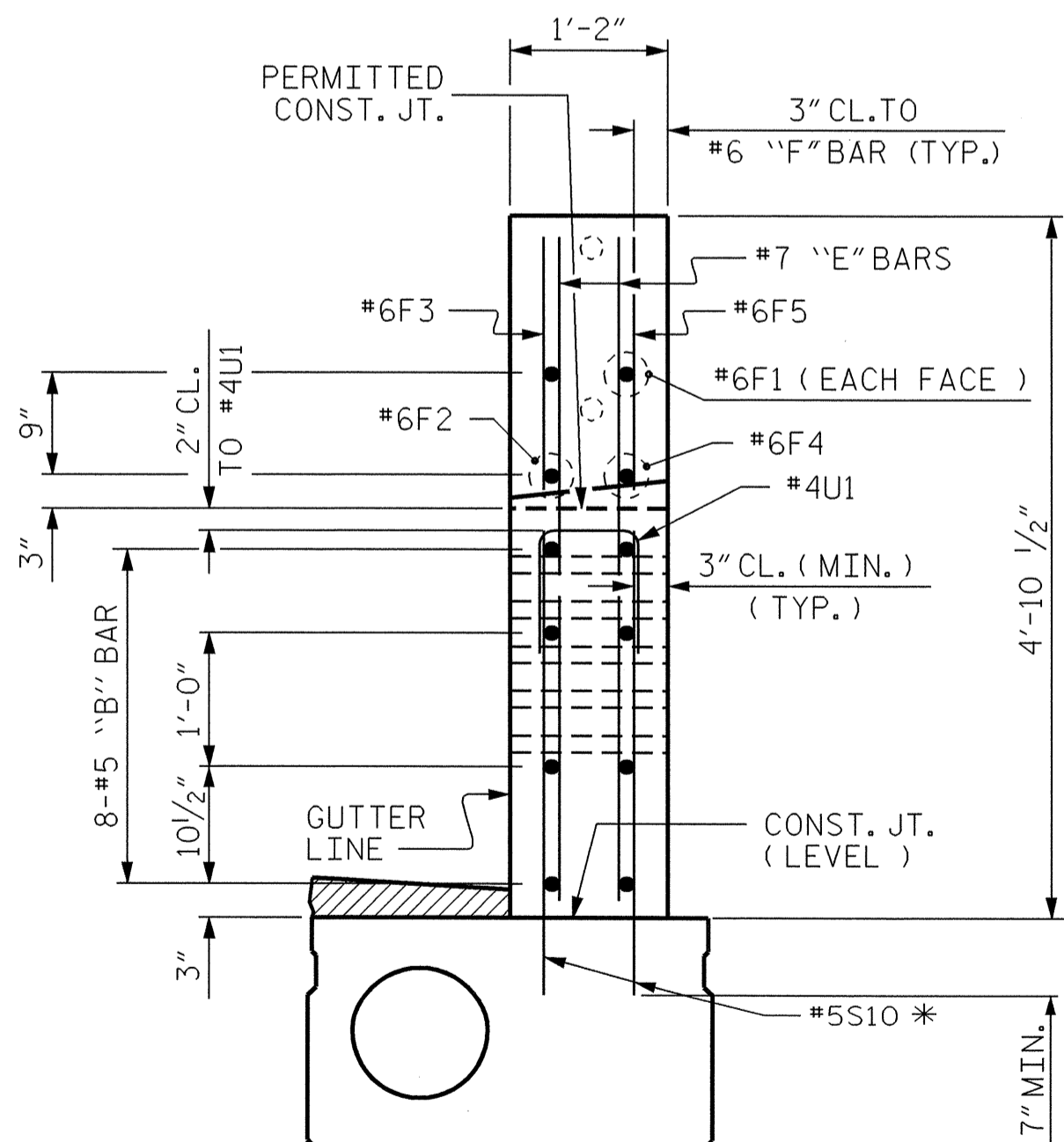
BAR TYPES		BILL OF MATERIAL					BILL OF MATERIAL				
		PARAPET AND END POSTS					PARAPET AND END POSTS				
		STAGE 2					STAGE 3				
BAR	NO.	SIZE	TYPE	LENGTH	WEIGHT	BAR	NO.	SIZE	TYPE	LENGTH	WEIGHT
*B10	8	#5	STR	46'-4"	387	*B10	8	#5	STR	46'-4"	387
*B11	16	#5	STR	47'-6"	793	*B11	16	#5	STR	47'-6"	793
*B12	8	#5	STR	34'-4"	286	*B12	8	#5	STR	34'-4"	286
*E1	4	#7	STR	2'-9"	22	*E1	4	#7	STR	2'-9"	22
*E2	4	#7	STR	3'-3"	27	*E2	4	#7	STR	3'-3"	27
*E3	4	#7	STR	3'-9"	31	*E3	4	#7	STR	3'-9"	31
*E4	4	#7	STR	4'-2"	34	*E4	4	#7	STR	4'-2"	34
*E5	4	#7	STR	4'-7"	37	*E5	4	#7	STR	4'-7"	37
*F1	4	#6	STR	1'-9"	11	*F1	4	#6	STR	1'-9"	11
*F2	2	#6	STR	3'-4"	10	*F2	2	#6	STR	3'-4"	10
*F3	2	#6	STR	4'-1"	12	*F3	2	#6	STR	4'-1"	12
*F4	2	#6	STR	3'-1"	9	*F4	2	#6	STR	3'-1"	9
*F5	2	#6	STR	3'-11"	12	*F5	2	#6	STR	3'-11"	12
						*S10	368	#5	STR	3'-1"	1183
						*U1	184	#4	1	3'-8"	451
* EPOXY COATED REINFORCING STEEL =					1671 LBS	* EPOXY COATED REINFORCING STEEL =					3305 LBS
CLASS "AA" CONCRETE					21.2 C.Y.	CLASS "AA" CONCRETE					21.2 C.Y.
CONCRETE PARAPET					177.61 L.F.	CONCRETE PARAPET					177.61 L.F.
* THESE BARS ARE EPOXY COATED						* THESE BARS ARE EPOXY COATED					

TOTAL BILL OF MATERIAL

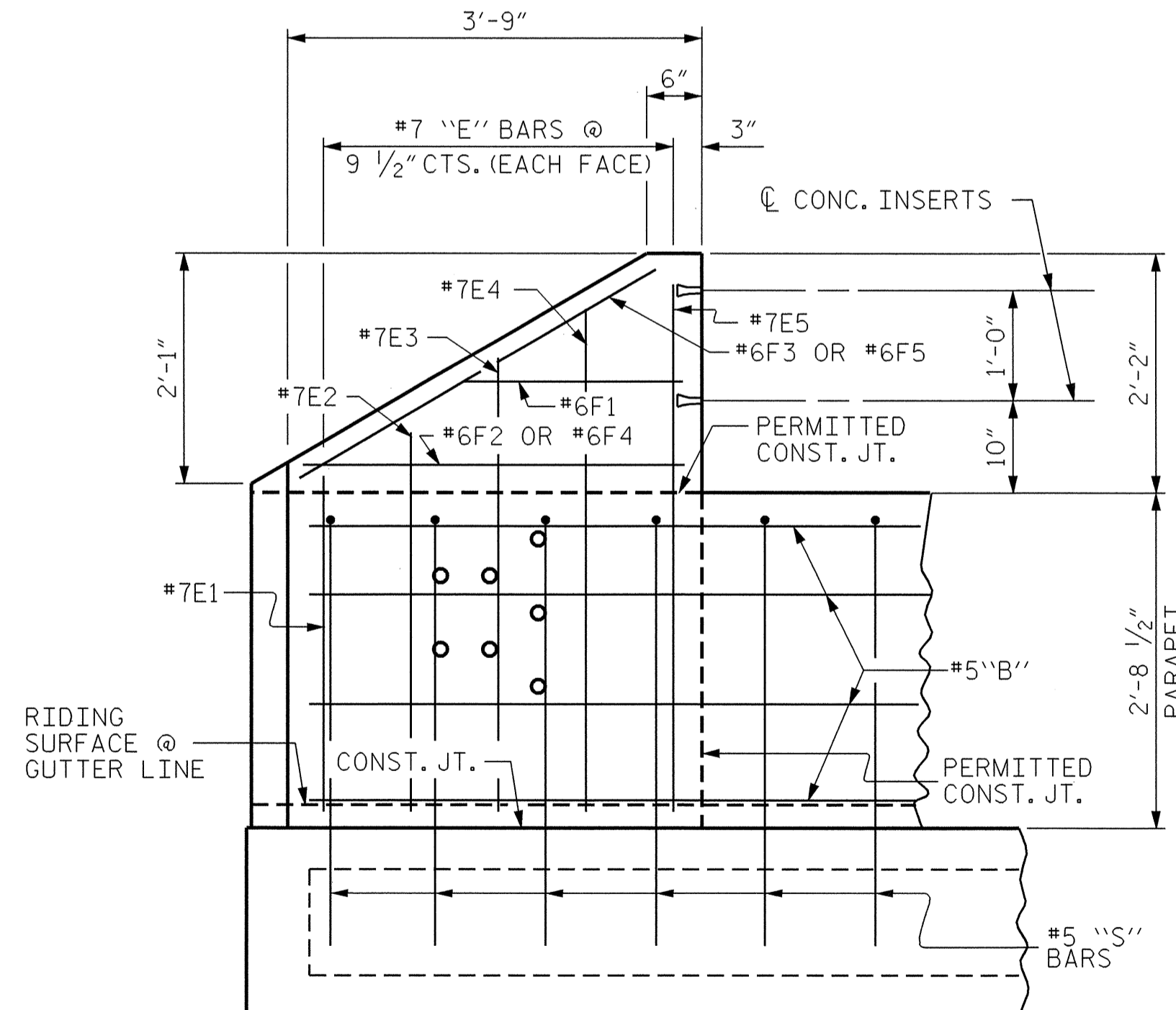
EPOXY COATED REINFORCING STEEL = 4976 LBS
 CLASS "AA" CONCRETE = 42.4 C.Y.
 CONCRETE PARAPET = 355.22 L.F.



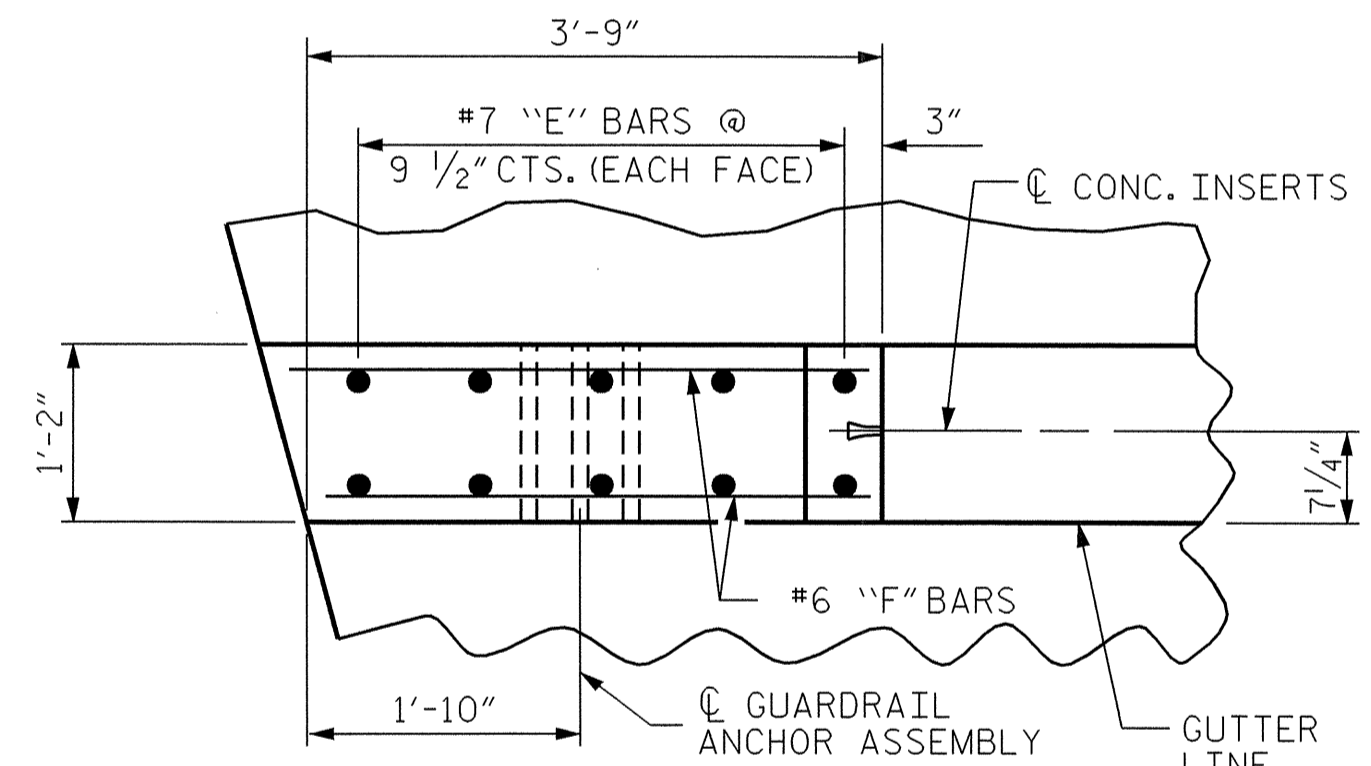
END VIEW (STAGE 2)



END VIEW (STAGE 3)



ELEVATION



PLAN OF END POST (STAGE 2 SHOWN STAGE 3 SIMILAR)

PARAPET AND END POST FOR TWO BAR RAIL

* FOR PLACEMENT OF 'S10' BARS, SEE PLAN OF SPANS.

PROJECT NO. B-3445
CURRITUCK COUNTY
 STATION: 24+18.00 -L-

SHEET 2 OF 2

STATE OF NORTH CAROLINA
 DEPARTMENT OF TRANSPORTATION
 RALEIGH
**RAIL POST SPACINGS
 AND
 END OF RAIL DETAILS**
 FOR TWO BAR METAL RAILS
 (STAGES 2 & 3)



REVISIONS					SHEET NO.
NO.	BY:	DATE:	NO.	DATE:	TOTAL SHEETS
1			3		43
2			4		

DRAWN BY: M. J. OSTRISHKO DATE: 12-20-01
 CHECKED BY: K. D. LAYNE DATE: 1-18-02

23-JUN-2004 16:45
 W:\squad1\b3445\finalplans\b344501mr.dgn
 klayne