

NOTES

THE STRUCTURAL CONCRETE ANCHOR ASSEMBLY SHALL CONSIST OF THE FOLLOWING COMPONENTS :

- A. FERRULES SHALL BE MADE FROM STEEL MEETING THE REQUIREMENTS OF AASHTO M169, GRADE 12L14 AND SHALL HAVE A MINIMUM LENGTH OF THREADS OF 2 1/2" FOR 1" FERRULES.
- B. WIRE STRUT SHOWN IN THE CONCRETE ANCHOR ASSEMBLY DETAIL IS THE MINIMUM ALLOWABLE SIZE AND SHALL HAVE A MINIMUM TENSILE STRENGTH OF 100,000 PSI.
- C. THE ANCHOR ASSEMBLIES TO BE HOT DIPPED GALVANIZED TO CONFORM TO REQUIREMENTS OF AASHTO M111.
- D. THE COST OF THE ANCHOR ASSEMBLIES IN PLACE SHALL BE INCLUDED IN THE PRICE BID FOR PRESTRESSED CONCRETE CORED SLABS.
- E. FERRULES TO BE PLUGGED DURING CASTING OF THE CORED SLAB UNITS AS RECOMMENDED BY THE MANUFACTURER.

THE BARK SIDE OF ALL LUMBER USED ON THE TOP RAIL SHALL BE TURNED UP. THE BARK SIDE SHALL BE TURNED TOWARD WALKWAY FOR ALL SIDE RAILS.

ALL FIELD SAW CUT EDGES FOR LUMBER MEMBERS SHALL BE TREATED WITH A PRESERVATIVE SOLUTION COMPATIBLE WITH THE PRESERVATIVE SOLUTION USED TO PRESSURE TREAT THE LUMBER.

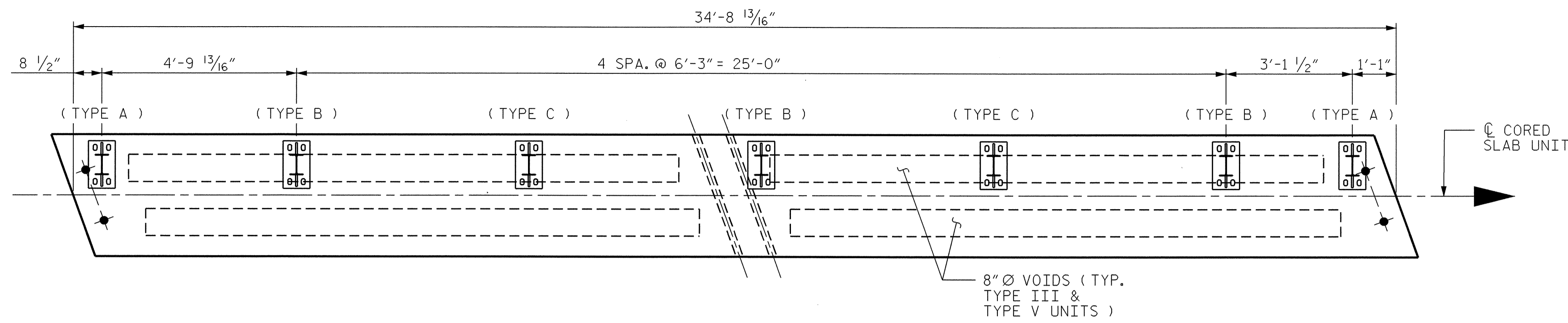
PRE-DRILLING BEFORE INSTALLING SCREWS OR BOLTS WILL BE REQUIRED. LUMBER WITH SPLITS DUE TO SCREWING OR BOLTING WILL HAVE CAUSE FOR REJECTION.

THE CONTRACTOR SHALL DETERMINE THE QUANTITY OF FASTNERS AND VARIOUS LUMBER COMPONENTS OF THE WOODEN RAILING.

FOR TYPE A, B AND C DETAILS, SEE "WOODEN RAIL CONNECTION TYPE - ELEVATION" SHEET 4 OF 4 OF "WOODEN RAIL".

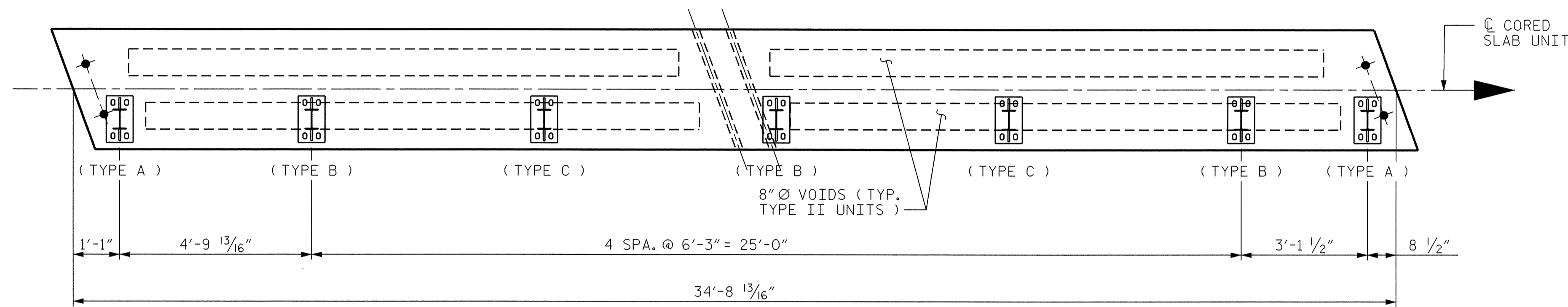
SEE "RAILING SYSTEM" SPECIAL PROVISIONS.

POST SPACING FOR THE TYPE III UNITS ARE FOR THE TEMPORARY GUARDRAIL.



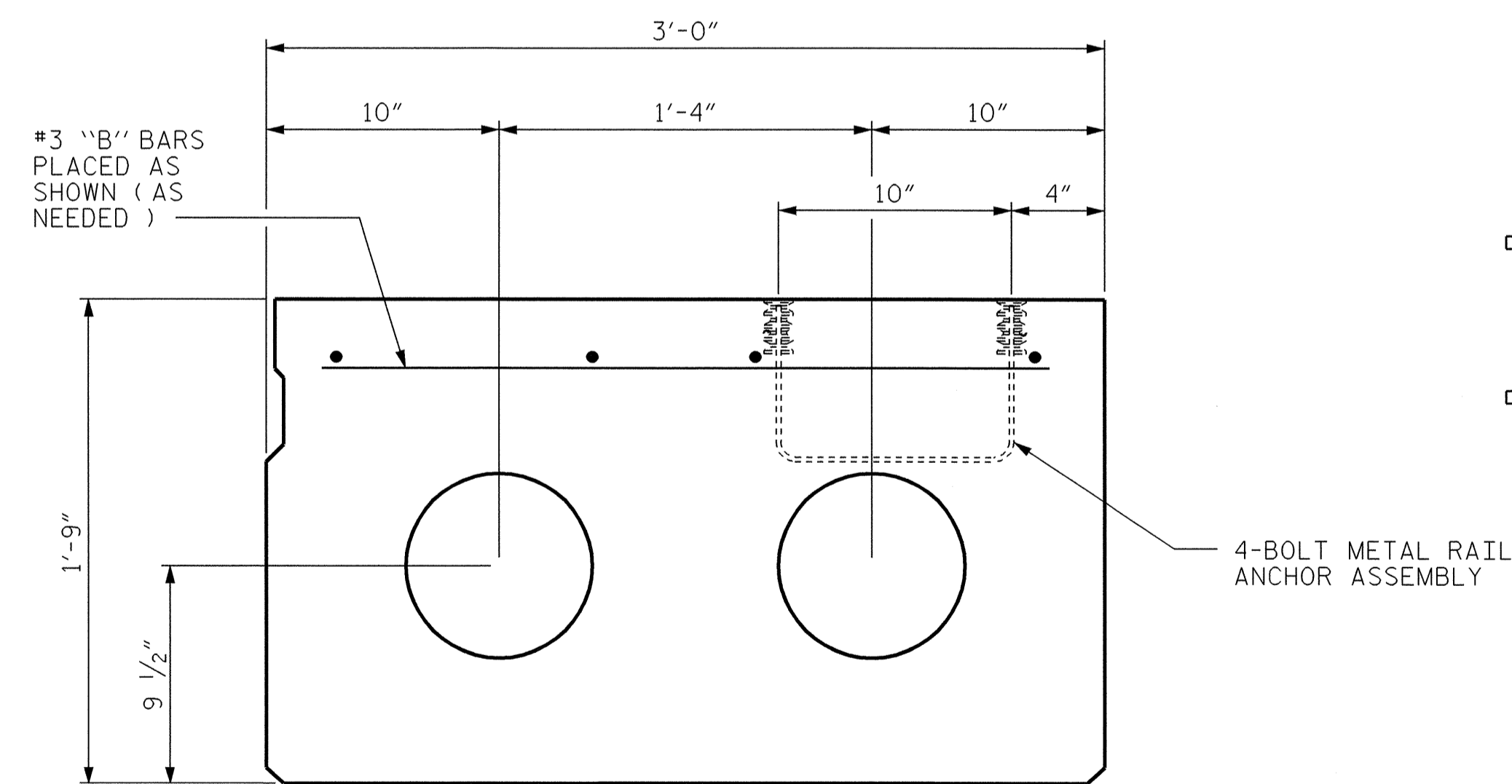
RAIL POST SPACING FOR SPAN D - STAGES 1 & 2

TYPE III & TYPE V UNITS SHOWN.



RAIL POST SPACING FOR SPAN D - STAGE 1

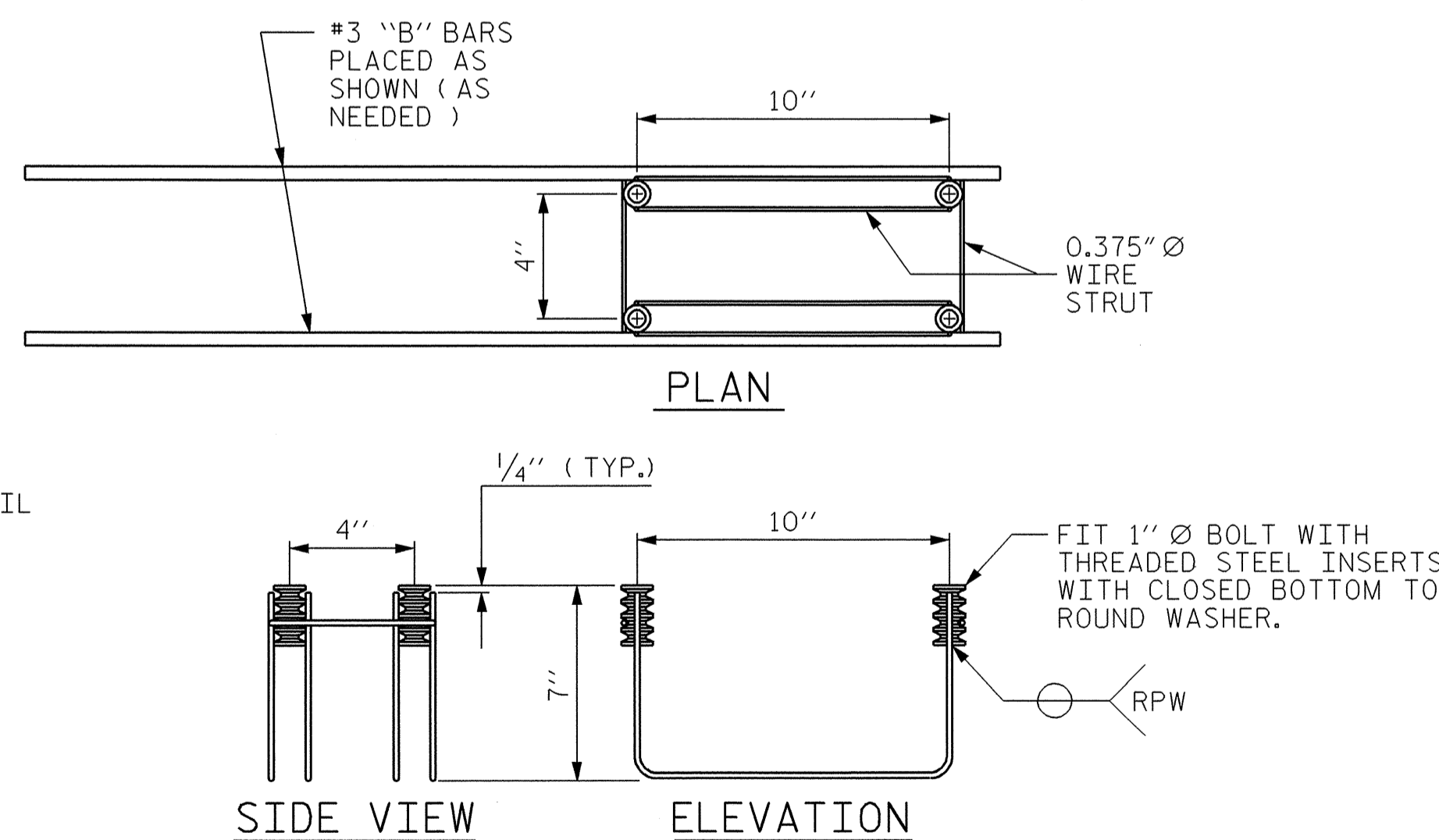
TYPE II UNIT SHOWN.



ELEVATION OF ANCHOR ASSEMBLY LOCATION

(TYPE II UNIT OF STAGE 1 SHOWN
TYPE III UNIT STAGE 1 & TYPE V UNIT MIRRORED)

THE #3 BARS ARE INCIDENTAL AND THEIR COST SHALL BE INCLUDED IN THE PRICE BID FOR THE PRESTRESSED CONCRETE CORED SLABS.



SIDE VIEW ELEVATION

MINIMUM LENGTH OF THREADS IN INSERT (FERRULE) : 2 1/2"

4-BOLT METAL RAIL ANCHOR ASSEMBLY

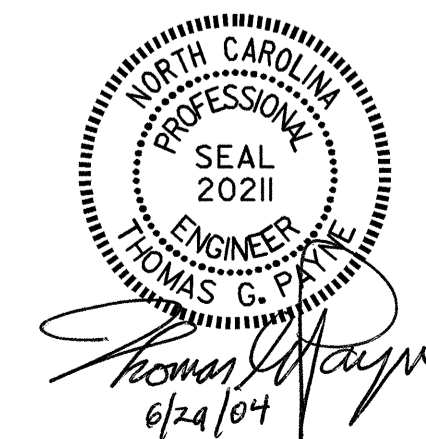
(102 ASSEMBLIES REQUIRED)

PROJECT NO. B-3445
CURRITUCK COUNTY
STATION: 24+18.00 -L-

SHEET 2 OF 4

STATE OF NORTH CAROLINA
DEPARTMENT OF TRANSPORTATION
RALEIGH

WOODEN RAIL
RAIL POST SPACING,
TYPE OF RAIL CONNECTIONS
& DETAILS



DRAWN BY : M. J. OSTRISHKO DATE : 12-12-01
CHECKED BY : T. G. PAYNE DATE : 4-18-02

23-JUN-2004 16:46
W:\squad\B3445\FinalPlans\B344501wr.dgn
klayne

REVISIONS						SHEET NO.
NO.	BY:	DATE:	NO.	BY:	DATE:	S-28
1			3			TOTAL SHEETS
2			4			43