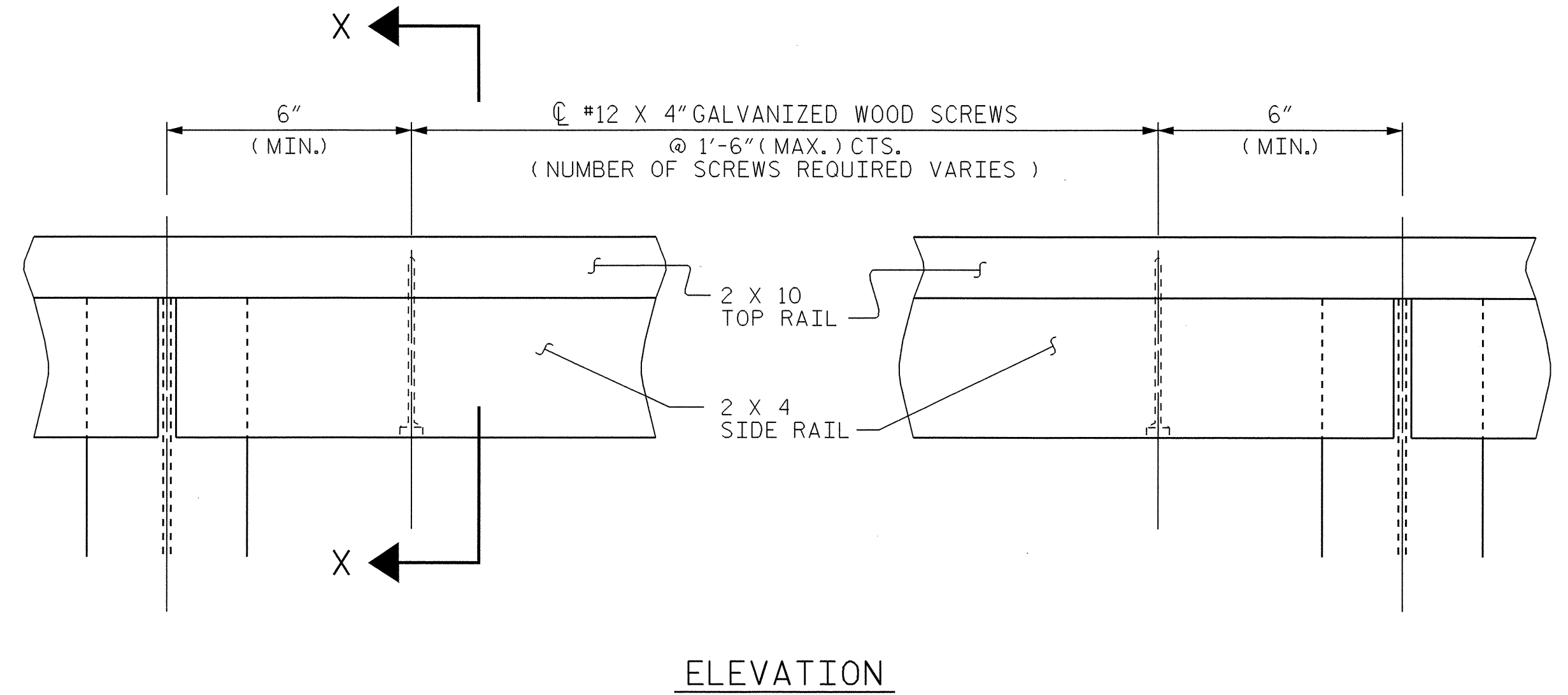
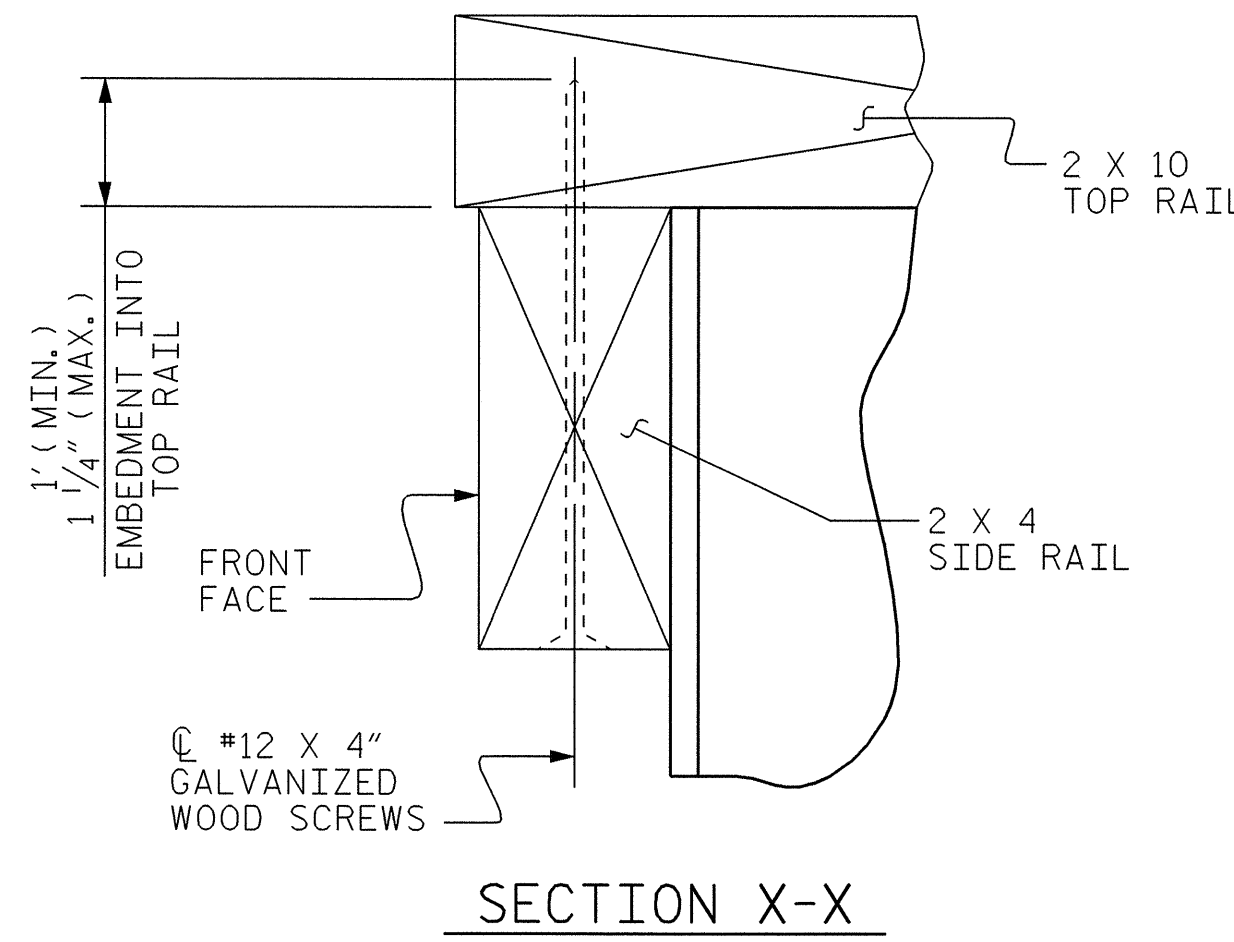
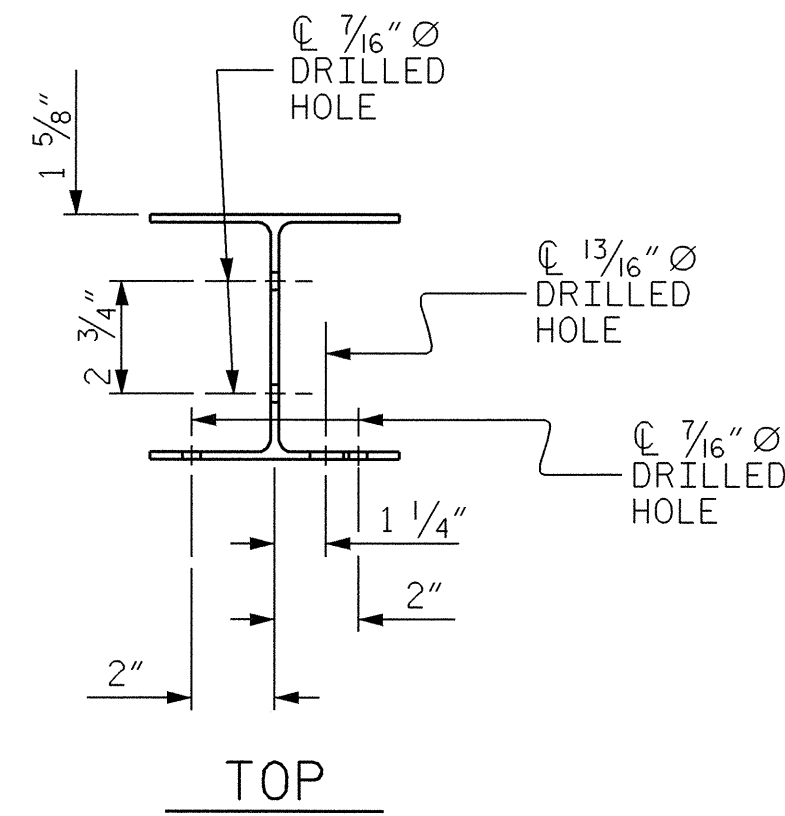
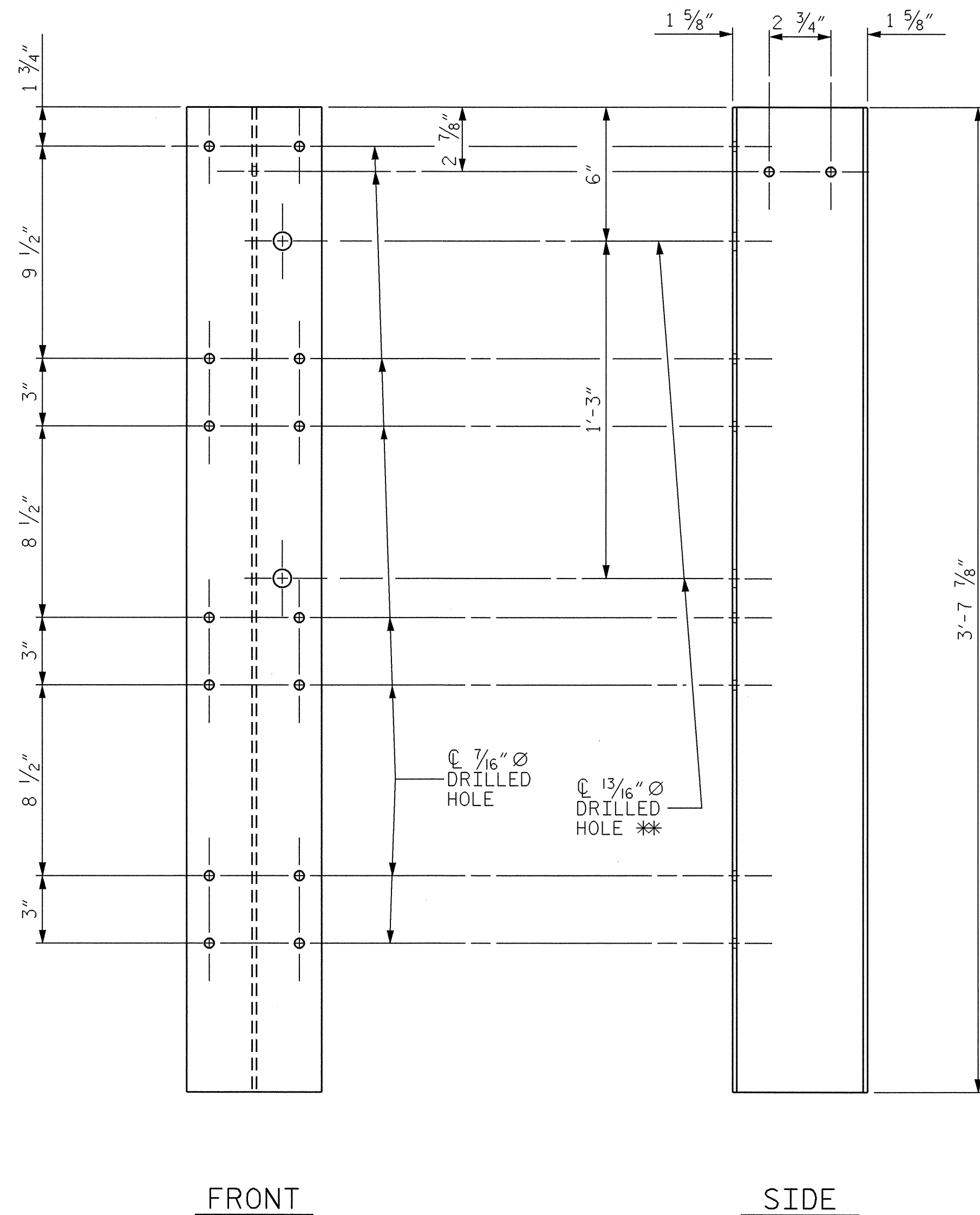


CONTRACTOR'S ATTENTION IS CALLED TO THE FACT IT MAY BE NECESSARY TO COUNTER SINK WOOD SCREW TO OBTAIN 1" (MIN.) EMBEDMENT.

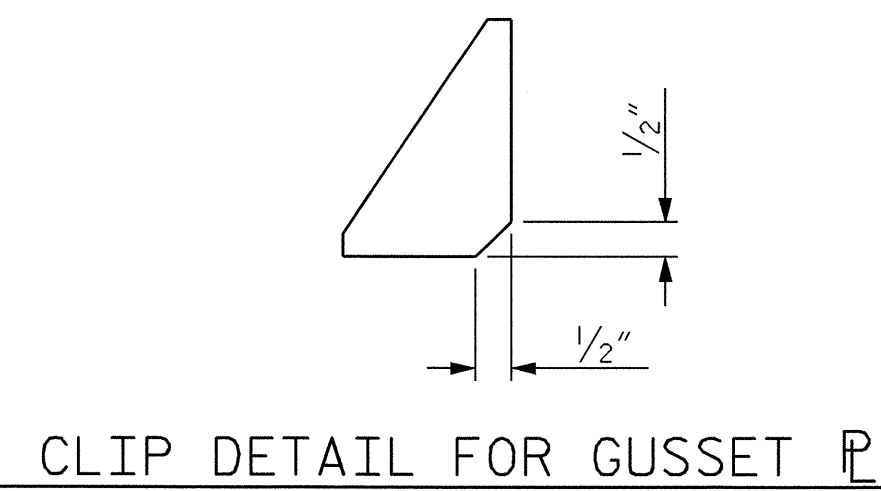


2 X 4 SIDE RAIL CONNECTION TO 2 X 10 TOP RAIL

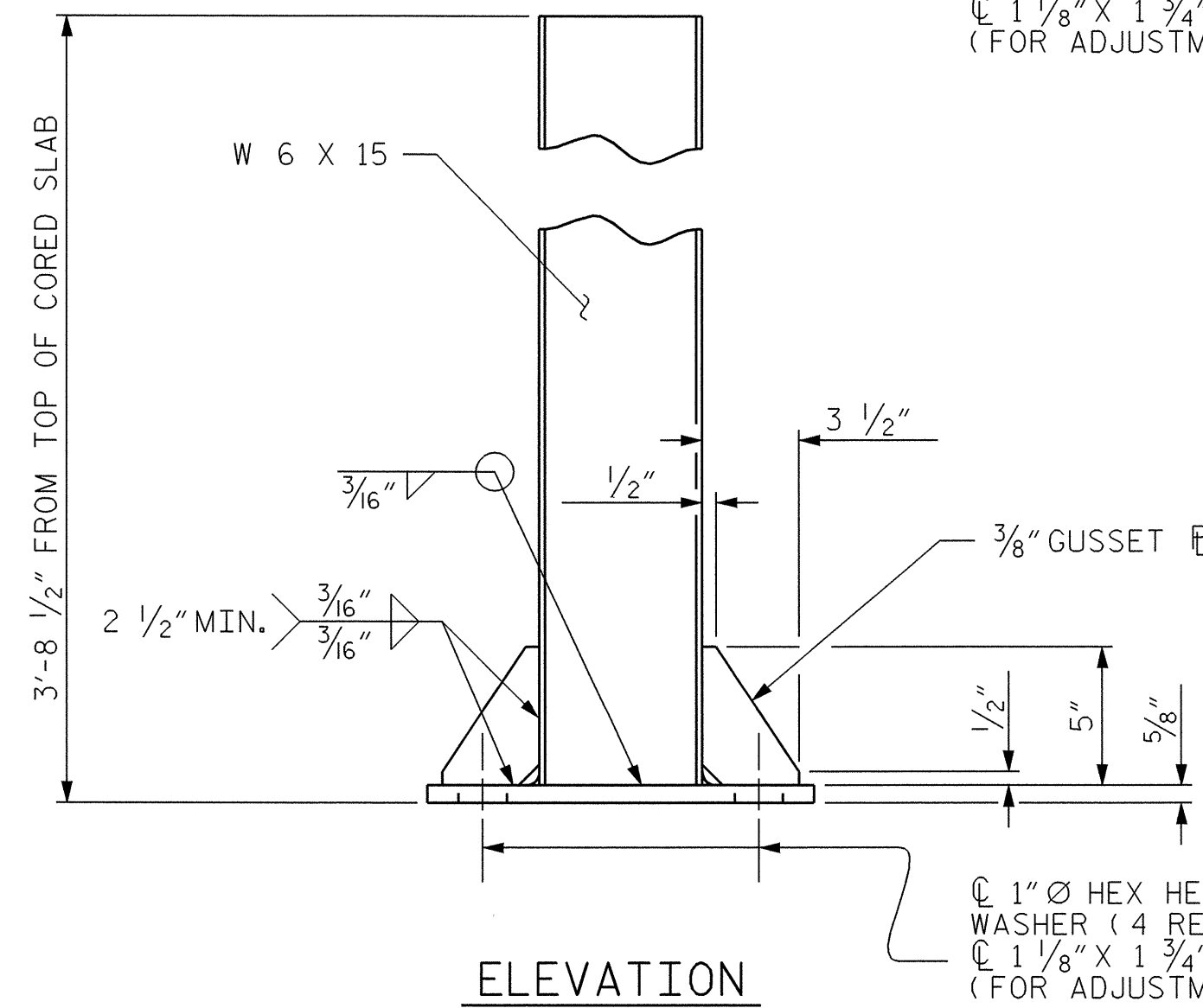


W 6 X 15 RAIL POST DETAILS
(102 REQ'D.)

** PRE-DRILLED 13/16" Ø HOLES IN THE FRONT FACE TO BE USED FOR ATTACHMENT OF TEMPORARY GUARDRAIL.

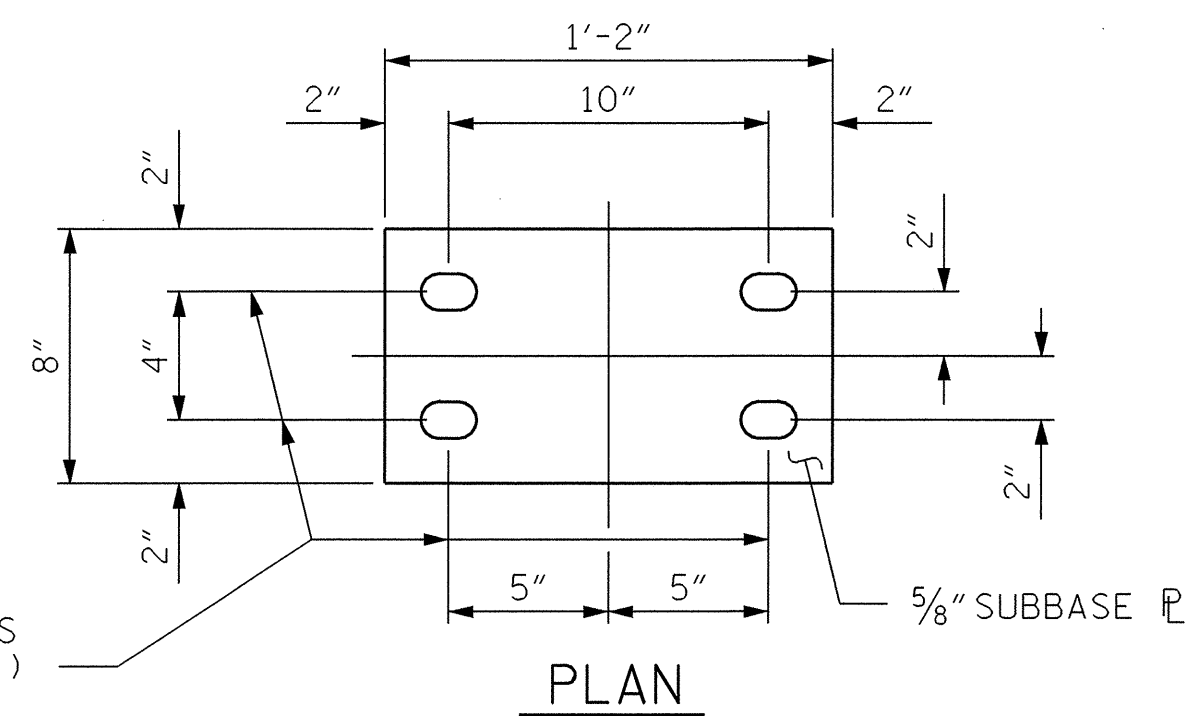


CLIP DETAIL FOR GUSSET

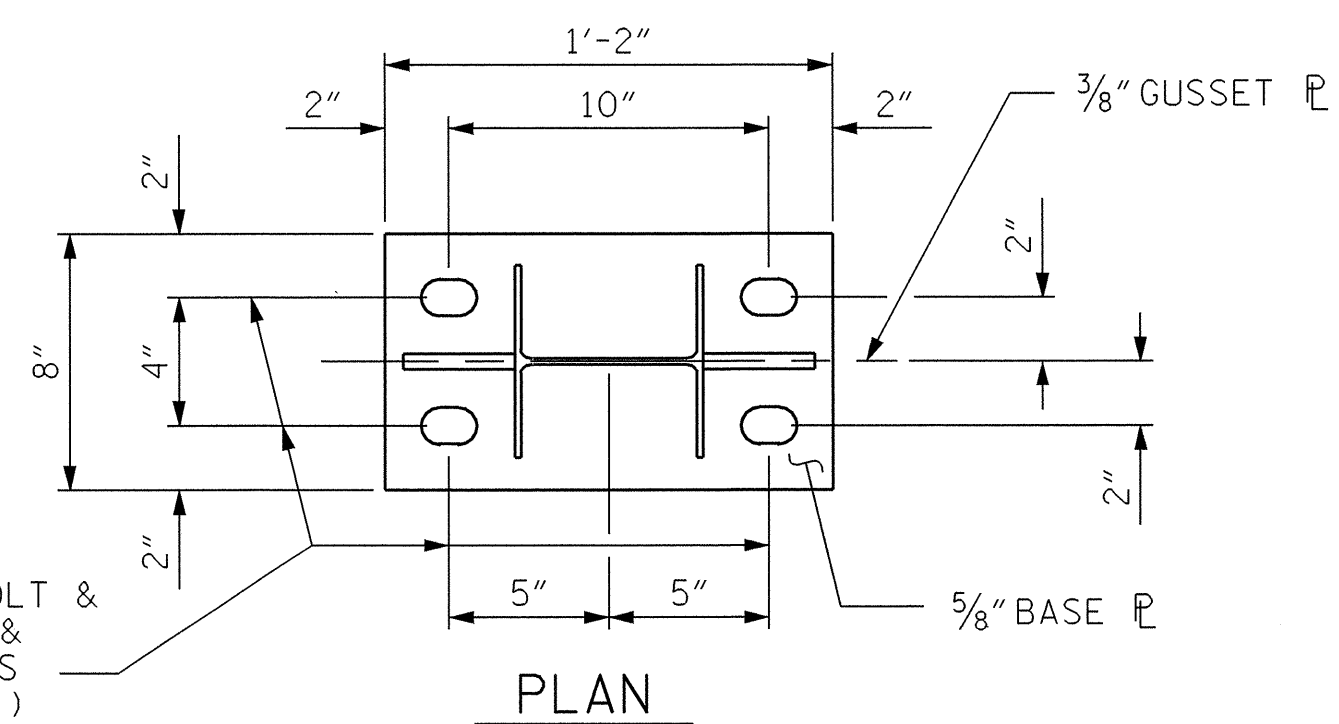


ELEVATION

BASE PLATE FOR RAIL POST
(102 REQ'D.)



PLAN
SUBBASE PLATE
(18 REQUIRED FOR STAGE 1 OF EXISTING BRIDGE)



PLAN

NOTES

POST AND POST BASE PLATES SHALL CONFORM TO THE REQUIREMENTS OF A.S.T.M. M270 GRADE 36 AND SHALL BE GALVANIZED AFTER FABRICATION TO CONFORM TO THE REQUIREMENTS OF A.S.T.M. A-123.

4 - 1" X 2 1/2" BOLTS WITH WASHERS ARE REQUIRED FOR ANCHORAGE AT THE CORED SLAB UNIT LOCATIONS AND 4 - 1" X 9/2" BOLTS WITH WASHERS ARE REQUIRED FOR ANCHORAGE AT THE EXISTING BRIDGE LOCATIONS. BOLTS SHALL CONFORM TO THE REQUIREMENTS OF ASTM A307. BOLTS AND WASHERS SHALL BE GALVANIZED, AT THE CONTRACTOR'S OPTION, STAINLESS STEEL BOLTS AND WASHERS MAY BE USED AS AN ALTERNATE FOR THE GALVANIZED BOLTS AND WASHERS. THEY SHALL CONFORM TO OR EXCEED THE MECHANICAL REQUIREMENTS OF ASTM A307. THE USE OF THIS ALTERNATE SHALL BE APPROVED BY THE ENGINEER.

THE CONTRACTOR SHALL DETERMINE THE QUANTITY OF BOLTS AND WASHERS AND THEIR COST SHALL BE INCLUDED IN THE PRICE BID FOR "RAILING SYSTEM.....LUMP SUM".

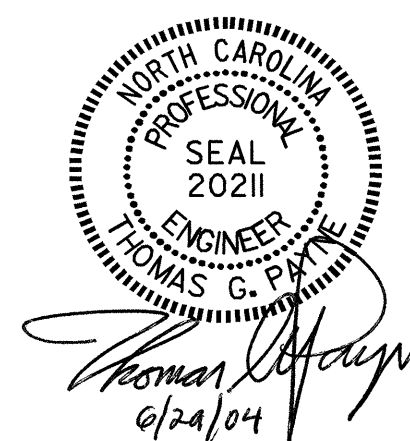
BOLTS TO BE TIGHTENED ONE-HALF TURN WITH A WRENCH FROM A FINGER-TIGHT POSITION.

PROJECT NO. B-3445
CURRITUCK COUNTY
STATION: 24+18.00 -L-

SHEET 3 OF 4

STATE OF NORTH CAROLINA
DEPARTMENT OF TRANSPORTATION
RALEIGH

WOODEN RAIL
RAIL POST
& DETAILS



REVISIONS						SHEET NO.	
NO.	BY:	DATE:	NO.	BY:	DATE:	TOTAL SHEETS	
1			3			S-29	
2			4			43	

DRAWN BY : M. J. OSTRISHKO DATE : 12-12-01
CHECKED BY : T. G. PAYNE DATE : 4-18-02

23-JUN-2004 16:46
W:\squad1\b3445\finalplans\b344501wr.dgn
klayne