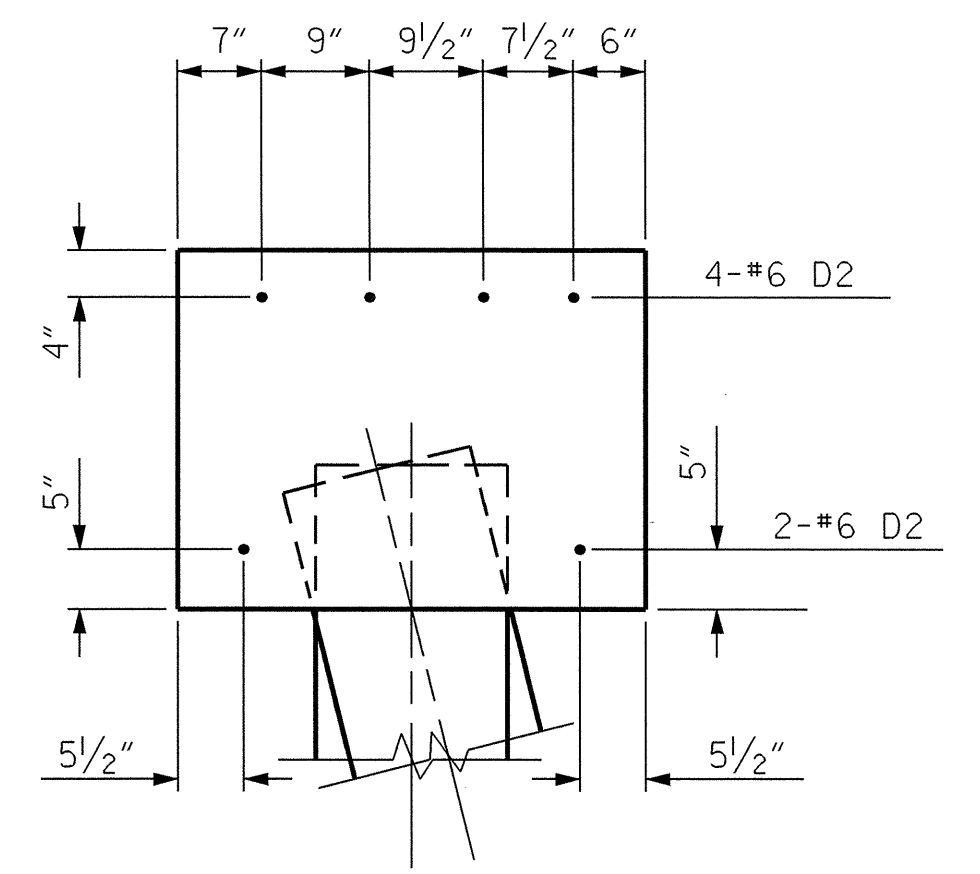
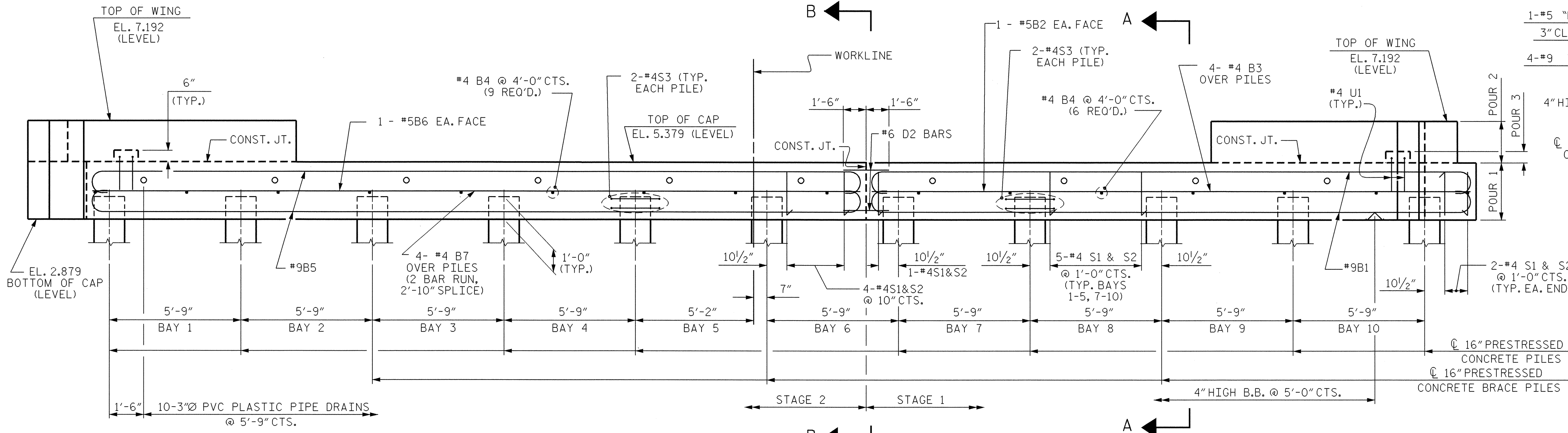


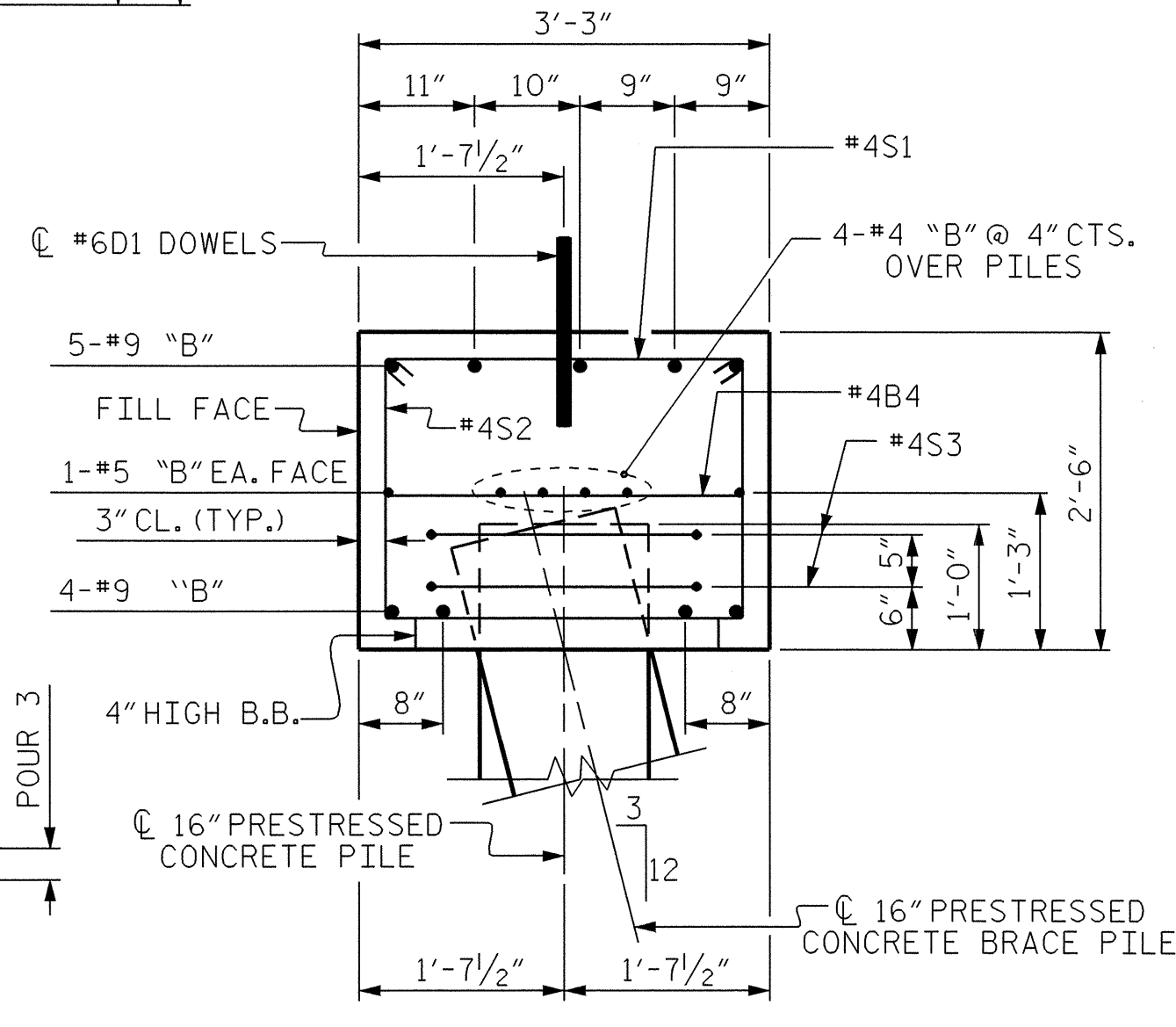
PLAN



SECTION B-B
(PLACEMENT OF DOWELS)



ELEVATION



SECTION A-A

NOTES

- STIRRUPS IN CAP MAY BE SHIFTED AS NECESSARY TO CLEAR DOWELS.
- PIPE DRAINS MAY BE SHIFTED SLIGHTLY AS NECESSARY TO CLEAR REINFORCING STEEL AND DOWELS.
- THE DOWELS AT THE CONSTRUCTION JOINT SHALL BE DRILLED AND GROUTED BEFORE STAGE 2 IS BUILT. DOWELS SHALL BE PARALLEL TO CAP.
- THE LATERAL GUIDE AT EACH END OF THE CAP IS NOT TO BE POURED UNTIL AFTER CORED SLAB UNITS ARE IN PLACE.
- ALL BAR SUPPORTS USED IN THE END BENT CAPS AND ALL INCIDENTAL REINFORCING STEEL SHALL BE EPOXY COATED IN ACCORDANCE WITH THE STANDARD SPECIFICATIONS.

PROJECT NO. B-3445
CURRITUCK COUNTY
 STATION: 24+18.00 -L-

SHEET 1 OF 2

STATE OF NORTH CAROLINA
 DEPARTMENT OF TRANSPORTATION
 RALEIGH

**SUBSTRUCTURE
 END BENT 1
 (STAGE 1 & 2)**

REVISIONS						SHEET NO.	
NO.	BY:	DATE:	NO.	BY:	DATE:	S-31	
1			3			TOTAL SHEETS	
2			4			43	



DRAWN BY : H.A. LOCKLEAR DATE : 3/1/02
 CHECKED BY : D.B. MOORE DATE : 3/26/02