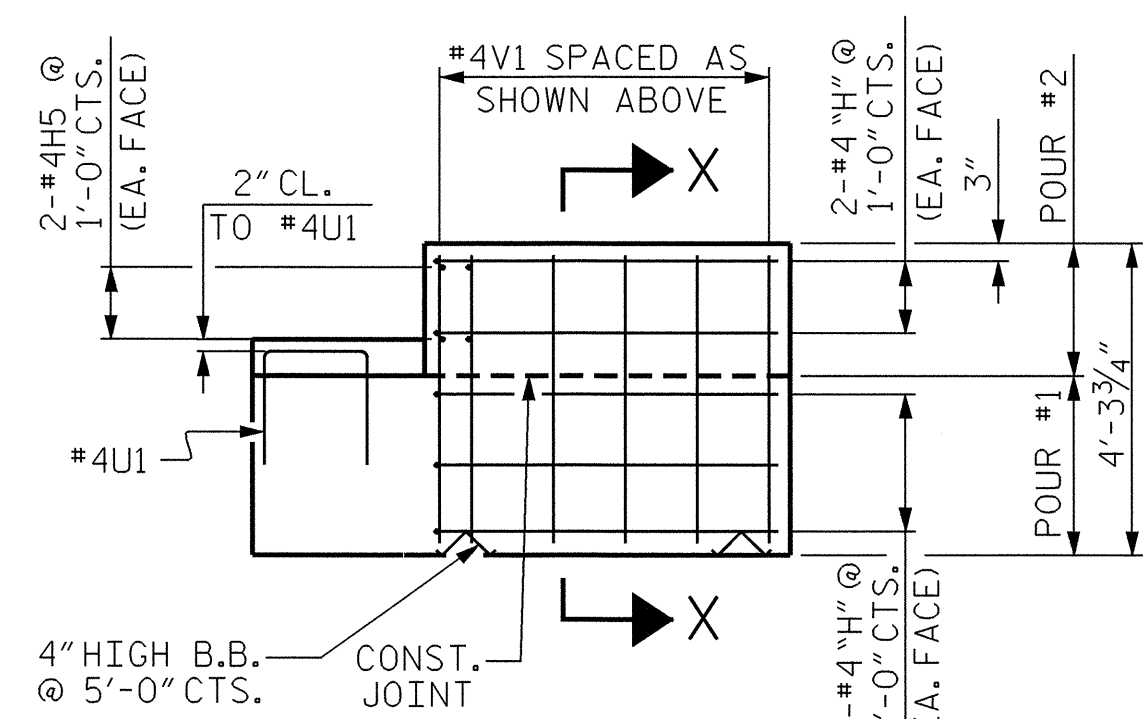
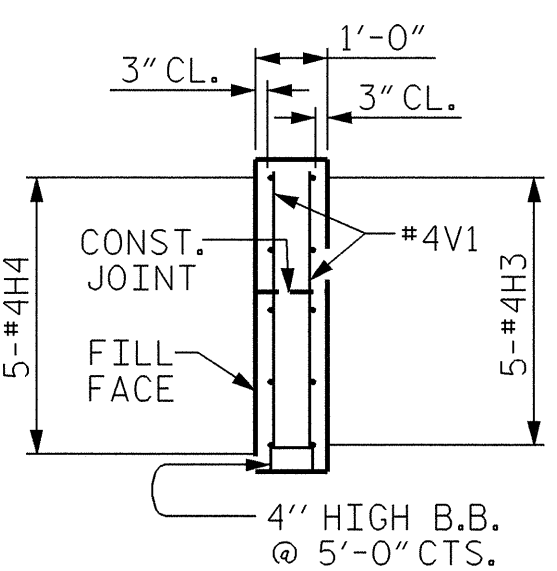


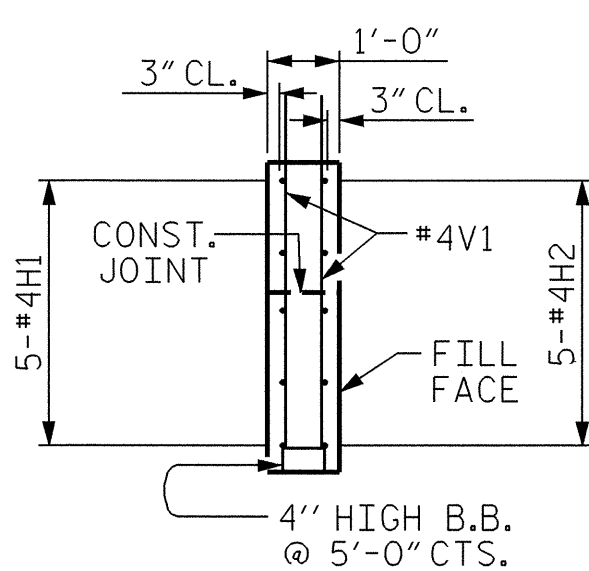
PLAN OF LEFT WING - W1



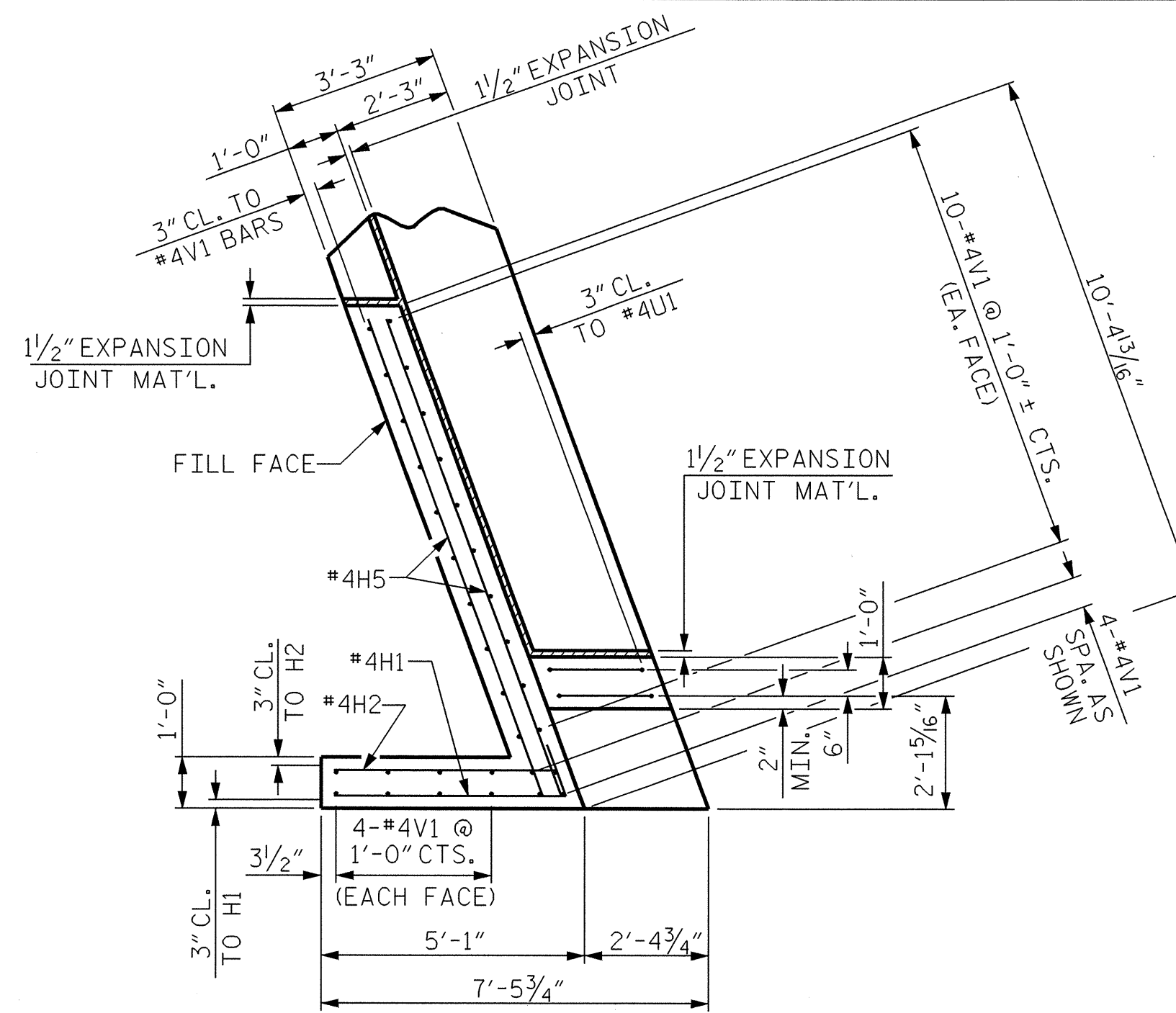
ELEVATION OF LEFT WING - W1



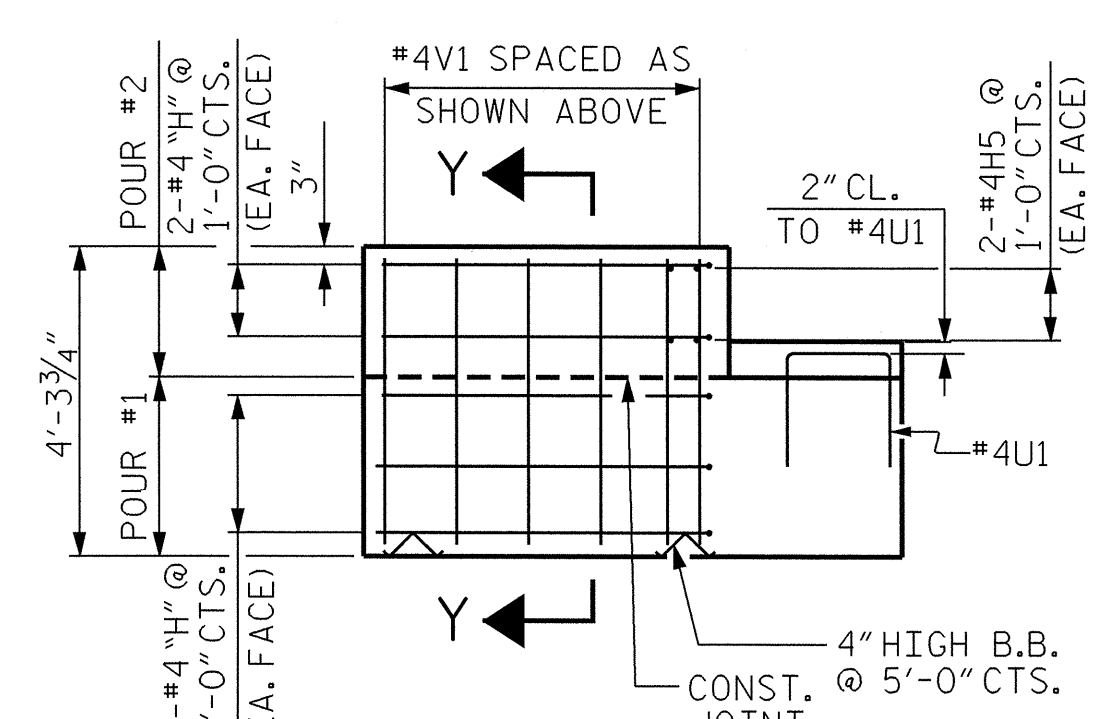
SECTION X-X



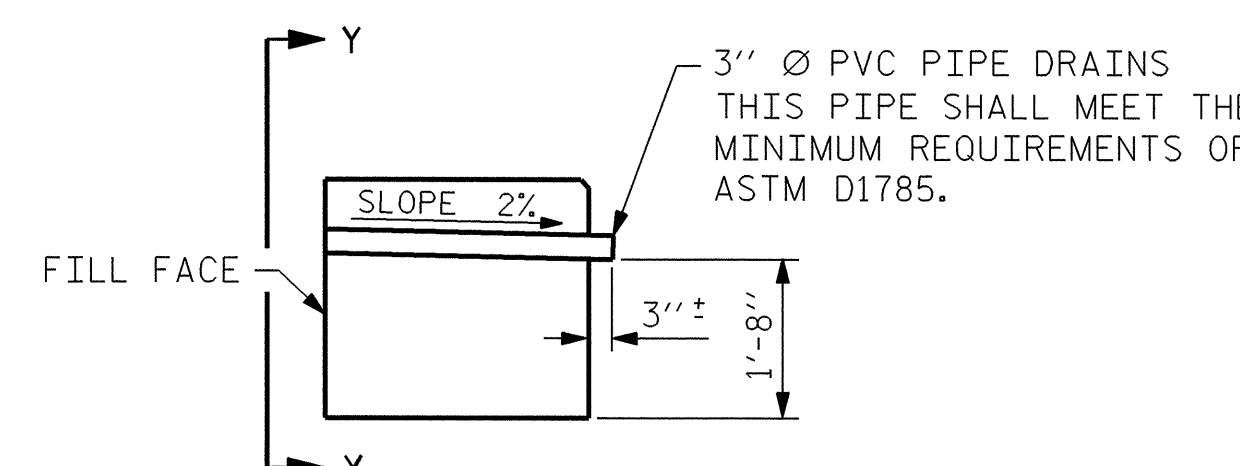
SECTION Y-Y



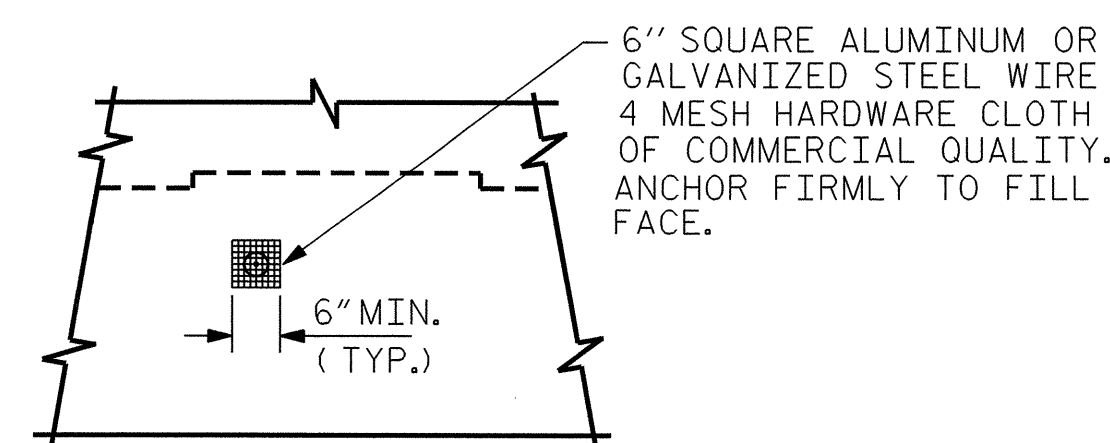
PLAN OF RIGHT WING - W2



ELEVATION OF RIGHT WING - W2



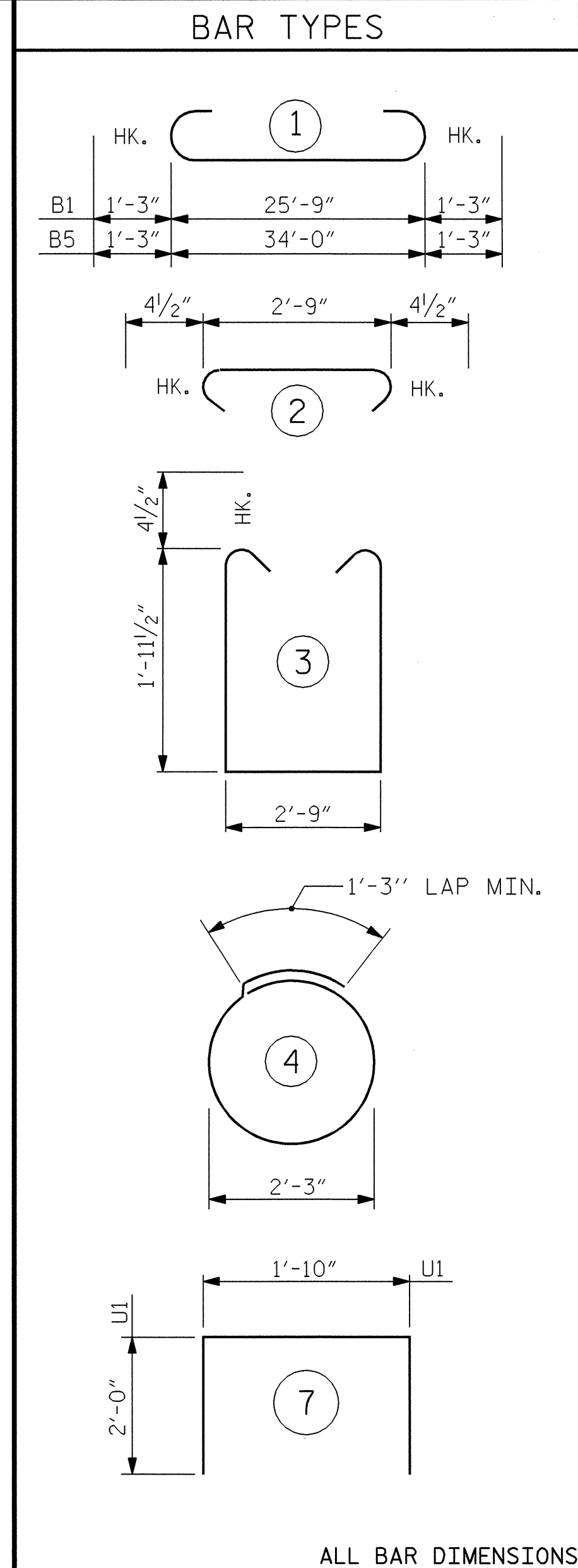
SECTION THRU CAP



VIEW Y-Y

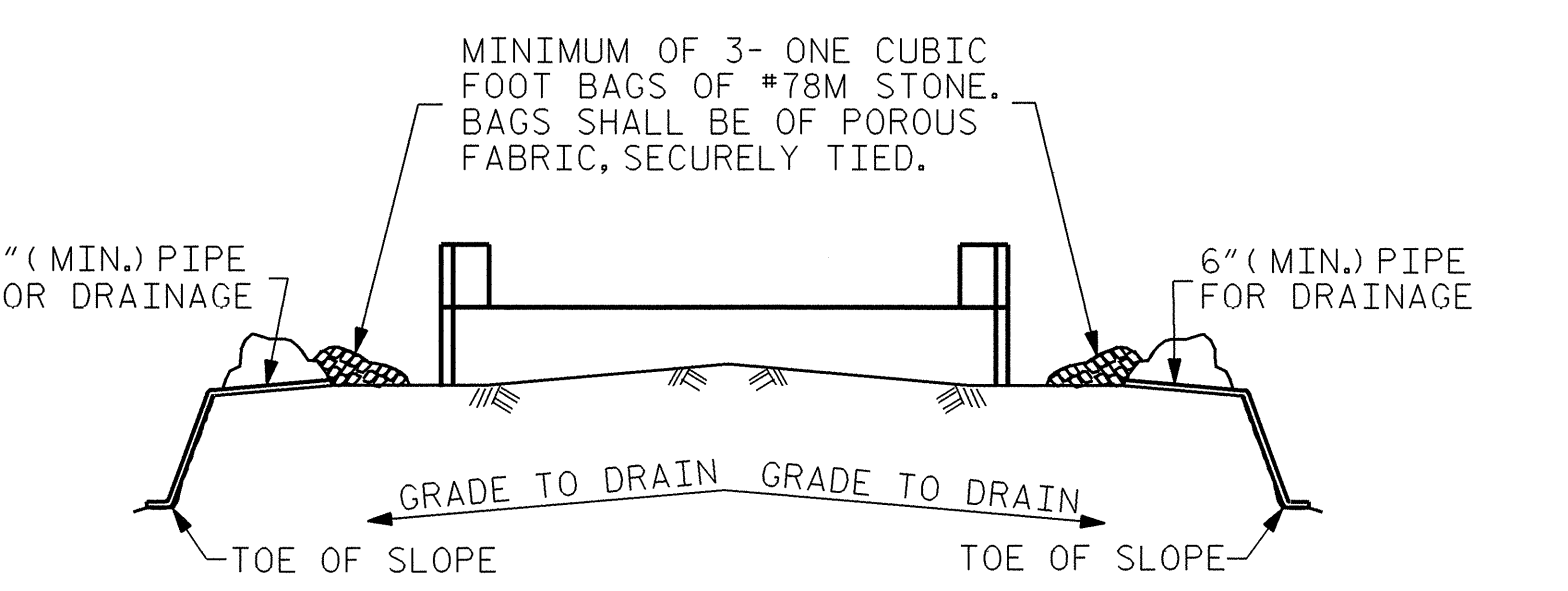
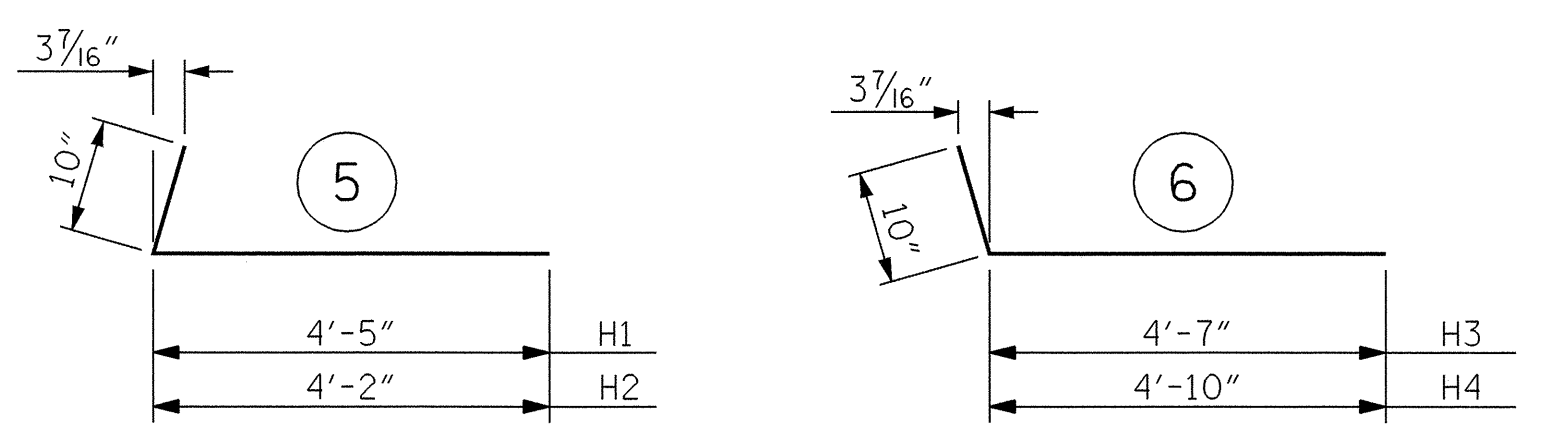
NOTE: NO SEPARATE PAYMENT WILL BE MADE FOR FURNISHING AND INSTALLING THE PVC PIPE DRAINS, HARDWARE CLOTH AND FASTENERS. THE ENTIRE COST OF THIS WORK SHALL BE INCLUDED IN THE UNIT CONTRACT PRICE BID FOR THE SEVERAL PAY ITEMS.

PIPE DRAIN DETAILS



ALL BAR DIMENSIONS ARE OUT TO OUT.

BILL OF MATERIAL						BILL OF MATERIAL					
END BENT 1 (STAGE 1)						END BENT 1 (STAGE 2)					
BAR NO.	SIZE	TYPE	LENGTH	WEIGHT		BAR NO.	SIZE	TYPE	LENGTH	WEIGHT	
*B1	9		28-3	864		*B4	9	4	STR	2-9	17
*B2	2	5	STR	25-9	54	*B5	9	9	1	36-6	1117
*B3	4	4	STR	25-9	69	*B6	2	5	STR	34-0	71
*B4	6	4	STR	2-9	11	*B7	8	4	STR	18-5	98
*D1	14	6	STR	1-6	32	*D1	20	6	STR	1-6	45
*H1	5	4		5-3	18	*D2	6	6	STR	3-0	27
*H2	5	4		5-0	17	*H3	5	4		5-5	18
*H5	4	4	STR	9-10	26	*H4	5	4		5-8	19
*S1	23	4		3-6	54	*H5	4	4	STR	9-10	26
*S2	23	4		7-5	114	*S1	31	4		3-6	72
*S3	10	4		8-4	56	*S2	31	4		3-7	154
*U1	2	4		5-10	8	*S3	12	4		8-4	67
*V1	32	4	STR	3-10	82	*U1	2	4		5-10	8
*EPOXY COATED REINFORCING STEEL LBS. 1405						*EPOXY COATED REINFORCING STEEL LBS. 1816					
CLASS AA CONCRETE BREAKDOWN						CLASS AA CONCRETE BREAKDOWN					
POUR #1 (CAP & LOWER WING)= 7.9 CY.						POUR #1 (CAP & LOWER WING)= 10.4 CY.					
POUR #2 (BACKWALL & UPPER WING)= 1.0 CY.						POUR #2 (BACKWALL & UPPER WING)= 1.0 CY.					
POUR #3 (LATERAL GUIDES)= 0.1 CY.						POUR #3 (LATERAL GUIDES)= 0.1 CY.					
CLASS AA CONCRETE TOTAL = 9.0 CY.						CLASS AA CONCRETE TOTAL = 11.5 CY.					
16\"/>						16\"/>					
No. = 5 LIN. FT. = 250						No. = 6 LIN. FT. = 300					
<b>TOTAL BILL OF MATERIAL</b>											
EPOXY COATED REINFORCING STEEL 3221 LBS.						CLASS AA CONCRETE 20.5 CY.					
CLASS AA CONCRETE						16\"/>					
						No. = 11 550 LIN. FT.					



BAGGED STONE AND PIPE SHALL BE PLACED IMMEDIATELY AFTER COMPLETION OF END BENT EXCAVATION. PIPE MAY BE EITHER CONCRETE, CORRUGATED STEEL, CORRUGATED ALUMINUM ALLOY, OR CORRUGATED PLASTIC. PERFORATED PIPE WILL NOT BE ALLOWED.

BAGGED STONE SHALL REMAIN IN PLACE UNTIL THE ENGINEER DIRECTS THAT IT BE REMOVED. THE CONTRACTOR SHALL REMOVE AND DISPOSE OF SILT ACCUMULATIONS AT BAGGED STONE WHEN SO DIRECTED BY THE ENGINEER. BAGS SHALL BE REMOVED AND REPLACED WHENEVER THE ENGINEER DETERMINES THAT THEY HAVE DETERIORATED AND LOST THEIR EFFECTIVENESS.

NO SEPARATE PAYMENT WILL BE MADE FOR THIS WORK AND THE ENTIRE COST OF THIS WORK SHALL BE INCLUDED IN THE UNIT CONTRACT PRICE BID FOR THE SEVERAL PAY ITEMS.

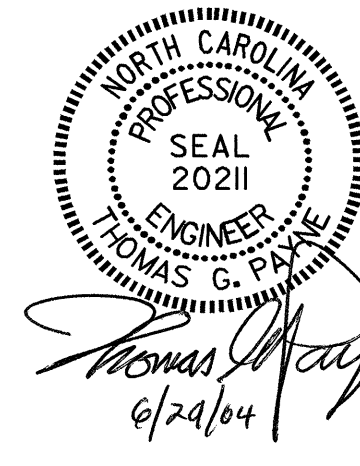
TEMPORARY DRAINAGE AT END BENT

PROJECT NO. B-3445  
CURRITUCK COUNTY  
 STATION: 24+18.00 -L-

SHEET 2 OF 2

STATE OF NORTH CAROLINA  
 DEPARTMENT OF TRANSPORTATION  
 RALEIGH

**SUBSTRUCTURE  
 END BENT 1  
 (STAGE 1 & 2)**



REVISIONS						SHEET NO.	
NO.	BY:	DATE:	NO.	BY:	DATE:	S-32	
1			3			TOTAL SHEETS	43
2			4				

DRAWN BY: H. A. LOCKLEAR DATE: 03/1/02  
 CHECKED BY: D. B. MOORE DATE: 3/26/02