

LATERAL GUIDE DETAILS
(TYP. EA. LATERAL GUIDE)

BILL OF MATERIAL FOR BENT #1 & BENT #2 STAGE 1 (2 REQUIRED)

| BAR | NO. | SIZE | TYPE | LENGTH | WEIGHT |
|-----|-----|------|------|---------|--------|
| *B1 | 4 | #10 | STR | 22'-6" | 387 |
| *B2 | 4 | #10 | 1 | 23'-11" | 412 |
| *B3 | 8 | #4 | STR | 24'-2" | 129 |
| *B5 | 15 | #4 | STR | 3'-8" | 37 |
| *B6 | 1 | #4 | STR | 3'-9" | 3 |
| *B7 | 1 | #4 | STR | 3'-7" | 2 |
| *D1 | 24 | #6 | STR | 1'-6" | 54 |
| *S1 | 14 | #5 | 2 | 9'-0" | 131 |
| *S2 | 14 | #5 | 3 | 4'-7" | 67 |
| *S3 | 8 | #4 | 4 | 10'-9" | 57 |
| *U1 | 4 | #4 | 5 | 4'-0" | 11 |
| *U2 | 2 | #4 | 5 | 5'-6" | 7 |
| *U3 | 1 | #9 | 5 | 10'-8" | 37 |
| *U4 | 1 | #4 | 5 | 3'-7" | 2 |
| *U5 | 1 | #4 | 5 | 3'-10" | 3 |
| *U6 | 1 | #4 | 5 | 4'-1" | 3 |
| *U7 | 1 | #4 | 5 | 4'-4" | 3 |
| *U8 | 1 | #4 | 5 | 4'-7" | 3 |
| *U9 | 16 | #4 | 5 | 8'-6" | 91 |

* EPOXY COATED REINF. STEEL = 1439 LBS

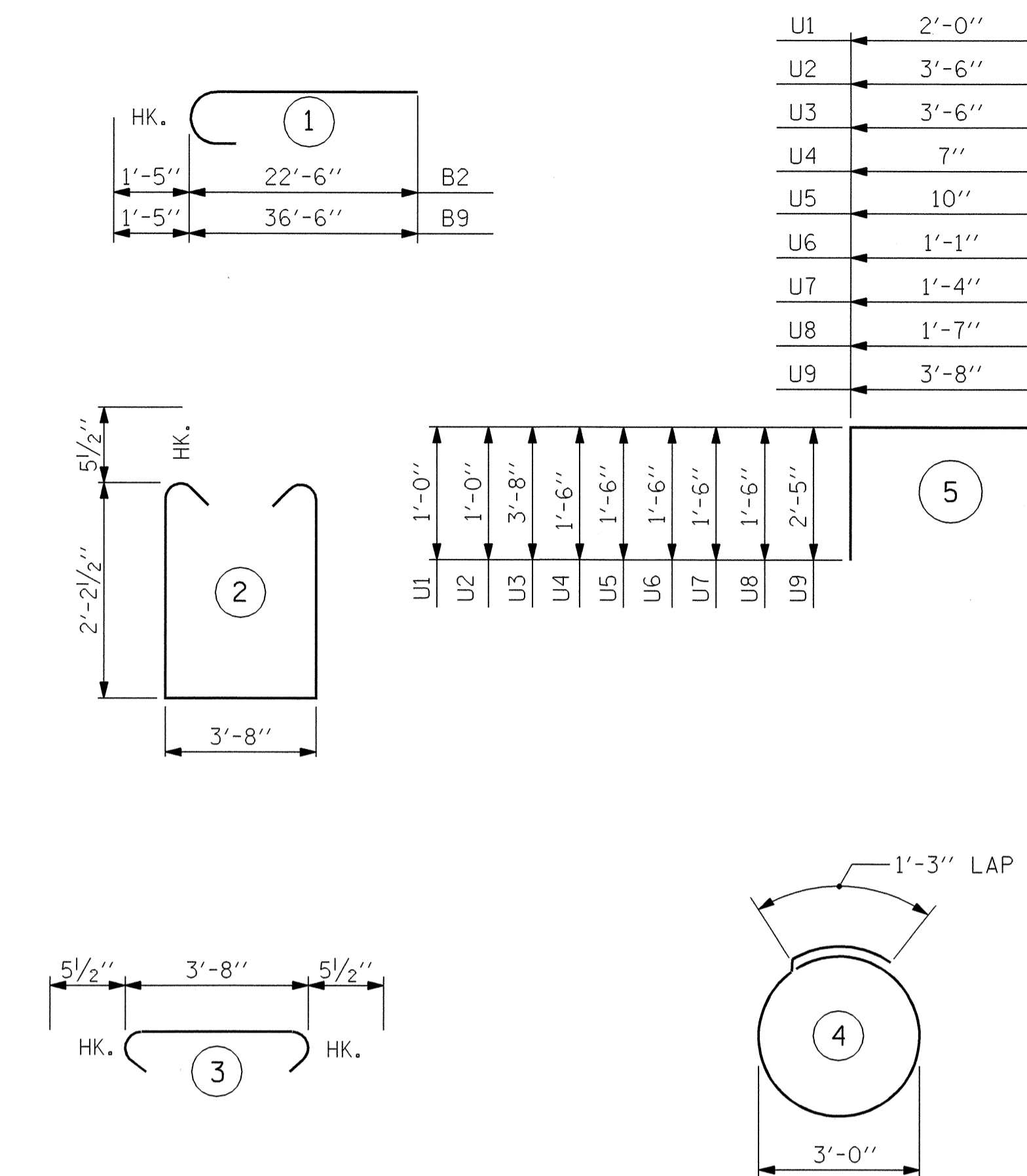
CLASS AA CONCRETE BREAKDOWN

| | | |
|--------------------------------|----------------|------------|
| POUR #1 - CAP | CU. YDS | 8.4 |
| POUR #2 - LATERAL GUIDE | CU. YDS | 0.1 |
| CLASS AA CONCRETE TOTAL | CU. YDS | 8.5 |

24" PRESTRESSED CONCRETE PILES

| | |
|-----------------|----------------|
| No. = 4 | LIN. FT. = 340 |
| STEEL PILE TIPS | EACH = 4 |

BAR TYPES



BILL OF MATERIAL FOR BENT #1 & BENT #2 STAGE 2 (2 REQUIRED)

| BAR | NO. | SIZE | TYPE | LENGTH | WEIGHT |
|------|-----|------|------|---------|--------|
| *B5 | 20 | #4 | STR | 3'-8" | 49 |
| *B6 | 1 | #4 | STR | 3'-9" | 3 |
| *B7 | 1 | #4 | STR | 3'-7" | 2 |
| *B8 | 4 | #10 | STR | 36'-6" | 628 |
| *B9 | 4 | #10 | 1 | 37'-11" | 653 |
| *B10 | 16 | #4 | STR | 19'-7" | 209 |
| *D1 | 44 | #6 | STR | 1'-6" | 99 |
| *S1 | 26 | #5 | 2 | 9'-0" | 244 |
| *S2 | 26 | #5 | 3 | 4'-7" | 124 |
| *S3 | 10 | #4 | 4 | 10'-9" | 72 |
| *U1 | 4 | #4 | 5 | 4'-0" | 11 |
| *U2 | 2 | #4 | 5 | 5'-6" | 7 |
| *U3 | 1 | #9 | 5 | 10'-10" | 37 |
| *U4 | 1 | #4 | 5 | 3'-7" | 2 |
| *U5 | 1 | #4 | 5 | 3'-10" | 3 |
| *U6 | 1 | #4 | 5 | 4'-1" | 3 |
| *U7 | 1 | #4 | 5 | 4'-4" | 3 |
| *U8 | 1 | #4 | 5 | 4'-7" | 3 |
| *U9 | 20 | #4 | 5 | 8'-6" | 114 |

* EPOXY COATED REINF. STEEL = 2266 LBS

CLASS AA CONCRETE BREAKDOWN

| | | |
|--------------------------------|----------------|-------------|
| POUR #1 - CAP | CU. YDS | 14.9 |
| POUR #2 - LATERAL GUIDE | CU. YDS | 0.1 |
| CLASS AA CONCRETE TOTAL | CU. YDS | 15.0 |

24" PRESTRESSED CONCRETE PILES

| | |
|-----------------|----------------|
| No. = 5 | LIN. FT. = 425 |
| STEEL PILE TIPS | EACH = 5 |

TOTAL BILL OF MATERIAL FOR BENT #1 & BENT #2 STAGES 1 & 2 (2 REQUIRED)

| | |
|--------------------------------|---------------------------|
| CLASS AA CONCRETE TOTAL | 23.5 CY. |
| EPOXY COATED REINFORCING STEEL | 3705 LBS |
| 24" PRESTRESSED CONCRETE PILES | No. = 9 765 LIN. FT. |
| STEEL PILE TIPS | 9 EACH |

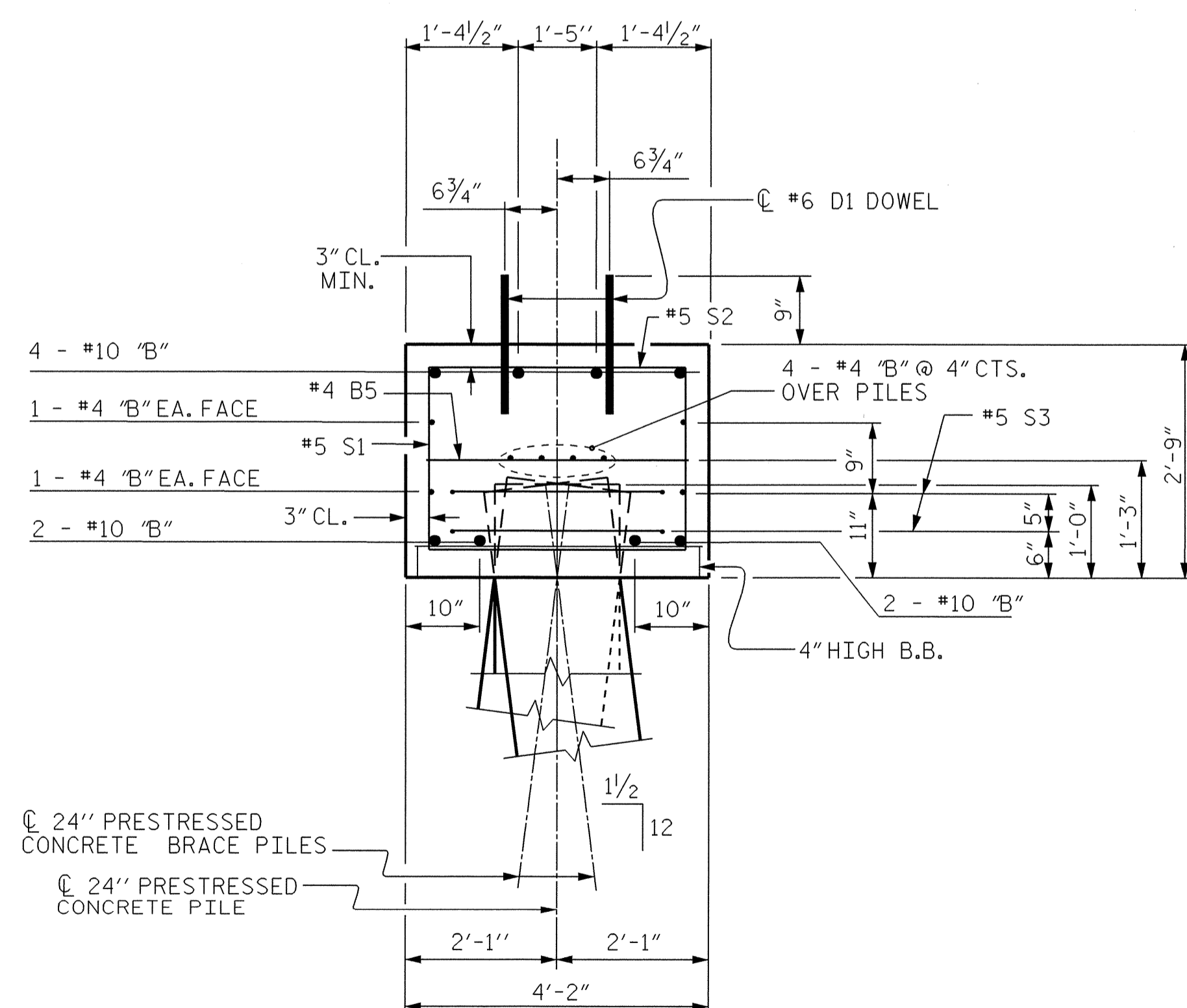
NOTES:

STIRRUPS IN CAP MAY BE SHIFTED AS NECESSARY TO CLEAR "D" DOWELS.

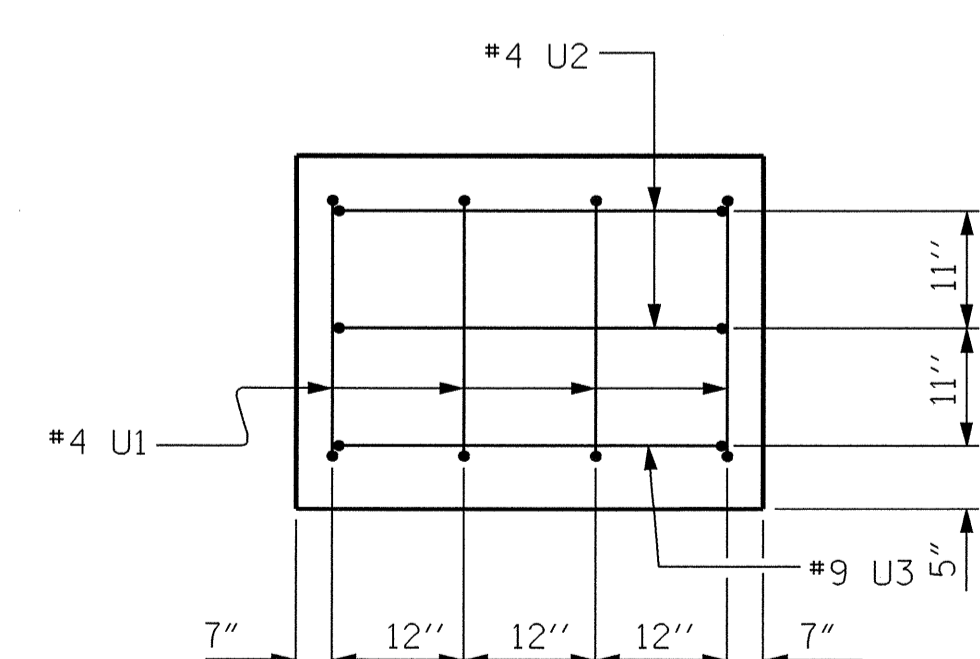
MECHANICAL BUTT SPLICE SHALL BE USED TO JOIN THE LONGITUDINAL "B" BARS IN THE TOP AND BOTTOM OF CAP. THE 1'-6" EXTENSION OF THE REINFORCING MAY BE REDUCED TO FACILITATE INSTALLATION. SEE SPECIAL PROVISIONS FOR MECHANICAL BUTT SPLICING FOR REINFORCING STEEL.

THE LATERAL GUIDE AT EACH END OF THE CAP IS NOT TO BE POURED UNTIL AFTER THE CORED UNITS ARE IN PLACE.

ALL BAR SUPPORTS USED IN THE BENT CAPS AND ALL INCIDENTAL REINFORCING STEEL SHALL BE EPOXY COATED IN ACCORDANCE WITH THE STANDARD SPECIFICATIONS.



SECTION THRU CAP



END OF CAP
(TYP. EA. END)

PROJECT NO. B-3445
CURRITUCK COUNTY
STATION: 24+18.00 -L-

SHEET 2 OF 2

STATE OF NORTH CAROLINA
DEPARTMENT OF TRANSPORTATION
RALEIGH

— SUBSTRUCTURE —
BENT 1
AND
BENT 2



DRAWN BY : W.R. BRILEY/JPA DATE : 3/18/02
CHECKED BY : D.B. MOORE/HAL DATE : 4/10/02

| REVISIONS | | | | | | SHEET NO. |
|-----------|-----|-------|-----|-----|-------|--------------|
| NO. | BY: | DATE: | NO. | BY: | DATE: | S-34 |
| 1 | | | 3 | | | TOTAL SHEETS |
| 2 | | | 4 | | | 43 |