

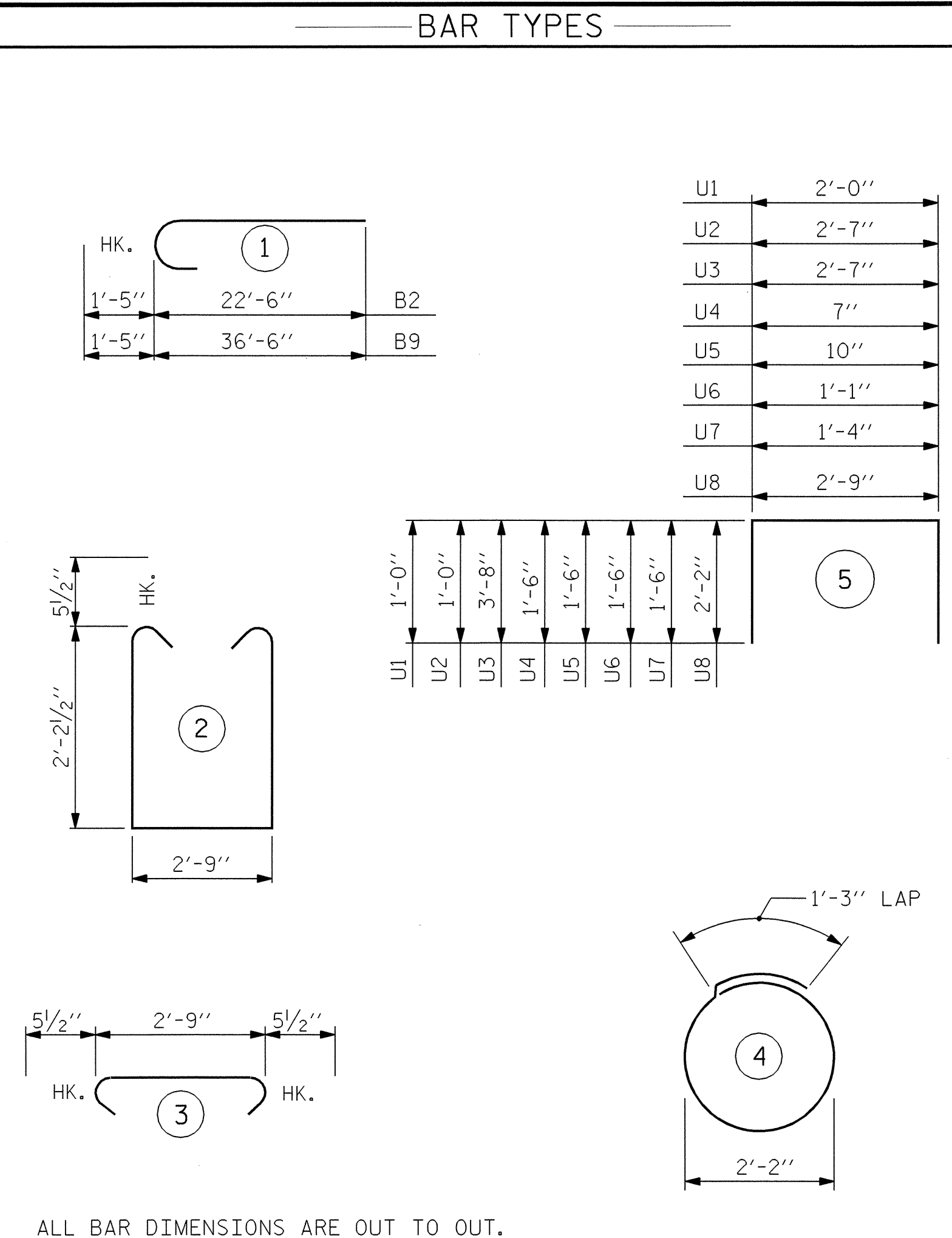
**LATERAL GUIDE DETAILS**  
(TYP. EA. LATERAL GUIDE)

BILL OF MATERIAL FOR BENT #3, STAGE 1					
BAR	NO.	SIZE	TYPE	LENGTH	WEIGHT
*B1	4	#10	STR	22'-6"	387
*B2	4	#10	1	23'-11"	412
*B3	8	#4	STR	24'-2"	129
*B5	15	#4	STR	2'-9"	28
*B6	1	#4	STR	2'-10"	2
*B7	1	#4	STR	2'-8"	2
*D1	24	#6	STR	1'-6"	54
*S1	17	#5	2	8'-1"	143
*S2	17	#5	3	3'-8"	65
*S3	8	#4	4	8'-1"	43
*U1	3	#4	5	4'-0"	8
*U2	2	#4	5	4'-7"	6
*U3	1	#9	5	9'-11"	34
*U4	1	#4	5	3'-7"	2
*U5	1	#4	5	3'-10"	3
*U6	1	#4	5	4'-1"	3
*U7	1	#4	5	4'-4"	3
*U8	16	#4	5	7'-1"	76

\* EPOXY COATED REINF. STEEL = 1400 LBS

CLASS AA CONCRETE BREAKDOWN			
POUR #1 - CAP	CU. YARDS	6.8	
POUR #2 - LATERAL GUIDE	CU. YARDS	0.1	
CLASS AA CONCRETE TOTAL	CU. YARDS	6.9	

16" PRESTRESSED CONCRETE PILES		
No. = 4	LIN. FEET = 260	



BILL OF MATERIAL FOR BENT #3, STAGE 2					
BAR	NO.	SIZE	TYPE	LENGTH	WEIGHT
*B5	20	#4	STR	2'-9"	37
*B6	1	#4	STR	2'-10"	2
*B7	1	#4	STR	2'-8"	2
*B8	4	#10	STR	36'-6"	628
*B9	4	#10	1	37'-11"	653
*B10	16	#4	STR	19'-7"	209
*D1	44	#6	STR	1'-6"	99
*S1	30	#5	2	8'-1"	253
*S2	30	#5	3	3'-8"	115
*S3	10	#4	4	8'-1"	54
*U1	3	#4	5	4'-0"	8
*U2	2	#4	5	4'-7"	6
*U3	1	#9	5	9'-11"	34
*U4	1	#4	5	3'-7"	2
*U5	1	#4	5	3'-10"	3
*U6	1	#4	5	4'-1"	3
*U7	1	#4	5	4'-4"	3
*U8	20	#4	5	7'-1"	95

\* EPOXY COATED REINF. STEEL = 2206 LBS

CLASS AA CONCRETE BREAKDOWN			
POUR #1 - CAP	CU. YARDS	11.9	
POUR #2 - LATERAL GUIDE	CU. YARDS	0.1	
CLASS AA CONCRETE TOTAL	CU. YARDS	12.0	

16" PRESTRESSED CONCRETE PILES		
No. = 5	LIN. FEET = 325	

TOTAL BILL OF MATERIAL FOR BENT #3 STAGES 1 & 2		
CLASS AA CONCRETE TOTAL		18.9 CY.
EPOXY COATED REINFORCING STEEL		3606 LBS
16" PRESTRESSED CONCRETE PILES	No. = 9	585 LIN. FT.

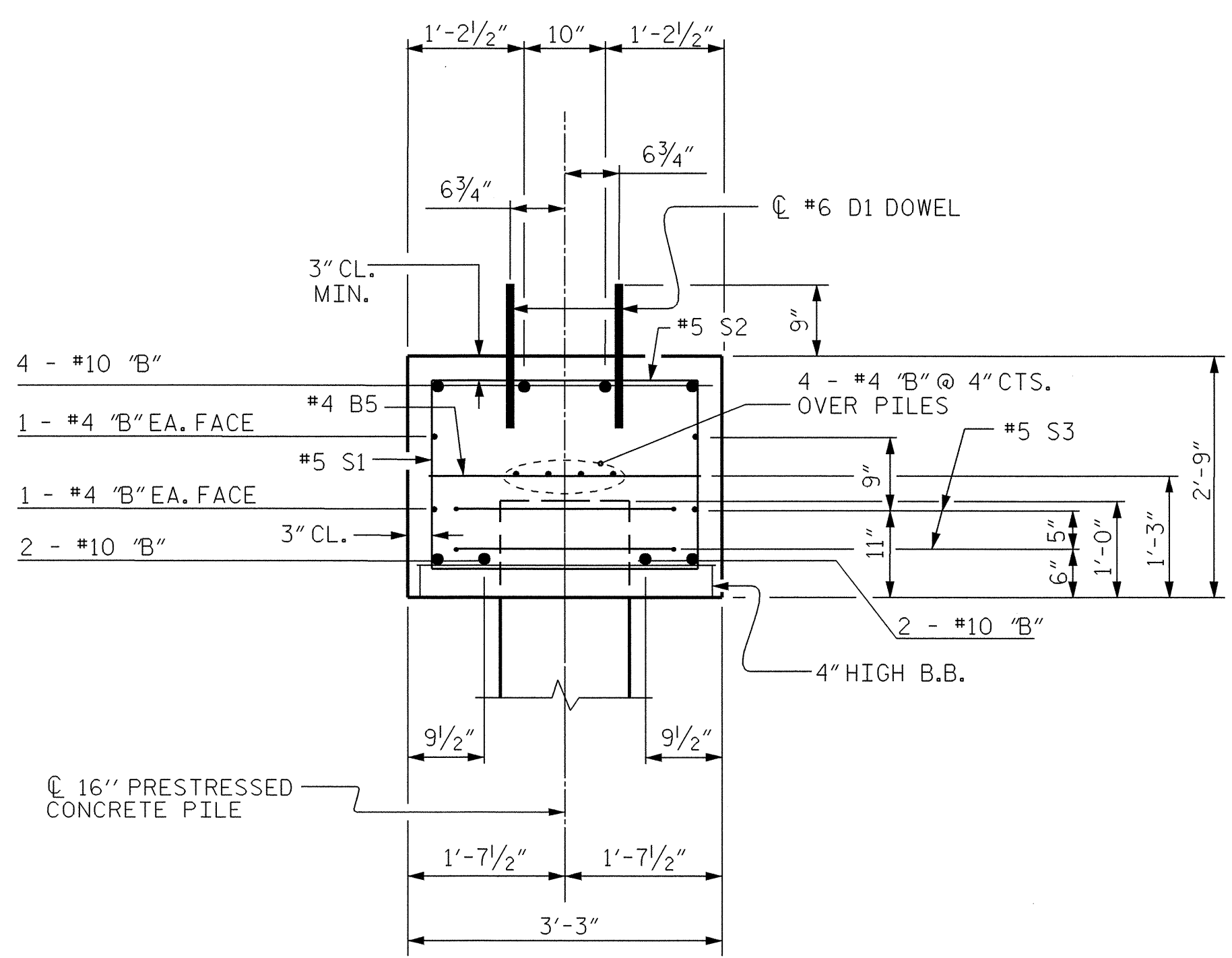
**NOTES:**

STIRRUPS IN CAP MAY BE SHIFTED AS NECESSARY TO CLEAR "D" DOWELS.

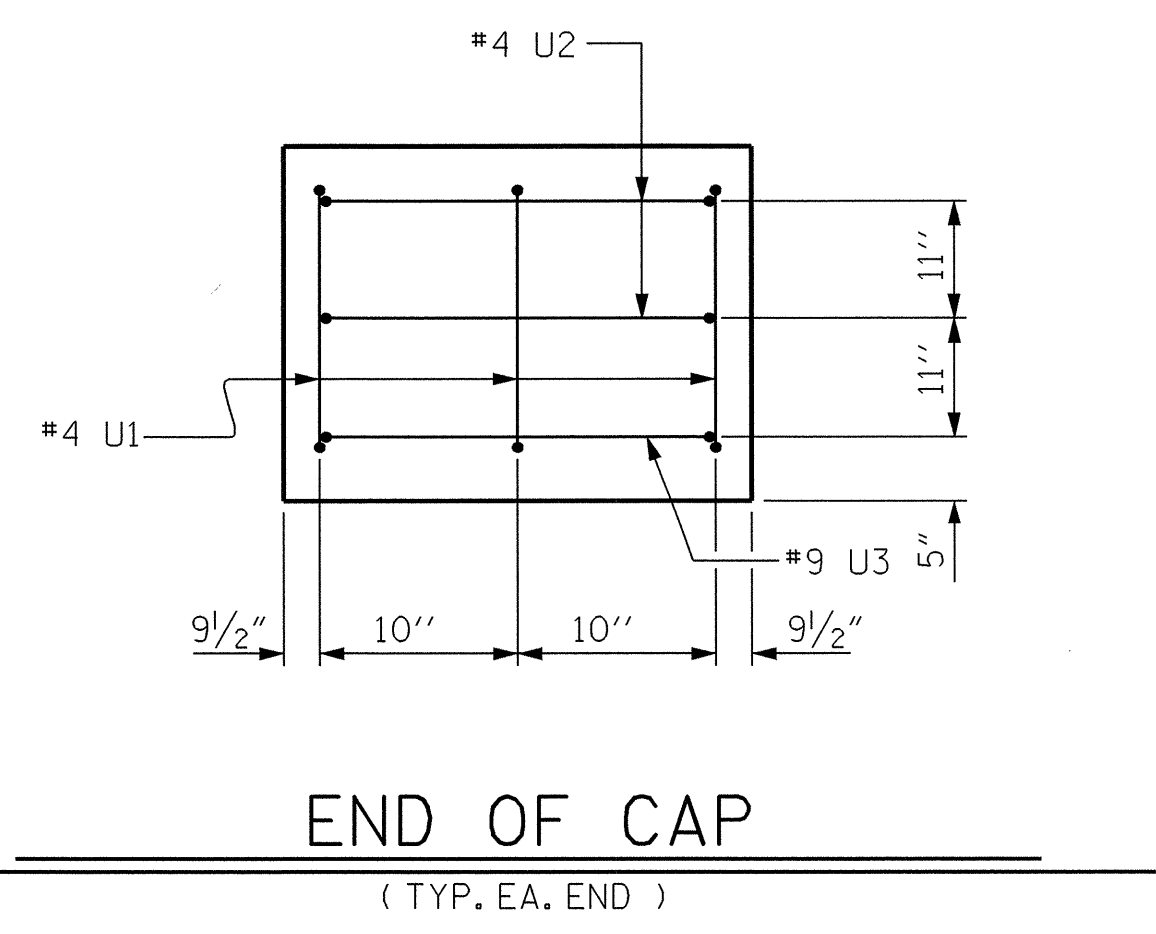
MECHANICAL BUTT SPLICE SHALL BE USED TO JOIN THE LONGITUDINAL "B" BARS IN THE TOP AND BOTTOM OF CAP. THE 1'-6" EXTENSION OF THE REINFORCING MAY BE REDUCED TO FACILITATE INSTALLATION. SEE SPECIAL PROVISIONS FOR MECHANICAL BUTT SPLICING FOR REINFORCING STEEL.

THE LATERAL GUIDE AT THE END OF THE CAP IS NOT TO BE POURED UNTIL AFTER THE CORED SLAB UNITS ARE IN PLACE.

ALL BAR SUPPORTS USED IN THE BENT CAP AND ALL INCIDENTAL REINFORCING STEEL SHALL BE EPOXY COATED IN ACCORDANCE WITH THE STANDARD SPECIFICATIONS.



**SECTION THRU CAP**



**END OF CAP**  
(TYP. EA. END)

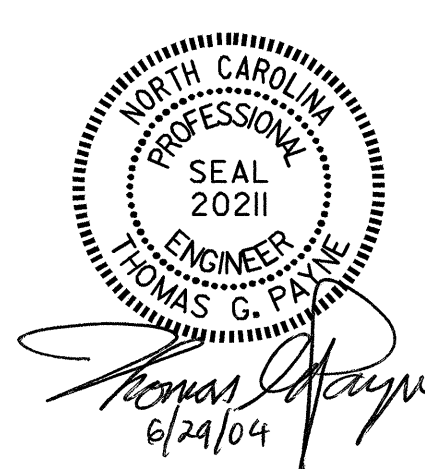
PROJECT NO. B-3445  
CURRITUCK COUNTY  
 STATION: 24+18.00 -L-  
 SHEET 2 OF 2

STATE OF NORTH CAROLINA  
 DEPARTMENT OF TRANSPORTATION  
 RALEIGH

==== SUBSTRUCTURE ====  
**BENT 3**

REVISIONS				SHEET NO.
NO.	BY:	DATE:	NO.	DATE:
1			3	
2			4	

**S-36**  
 TOTAL SHEETS: **43**



DRAWN BY : W.R. BRILEY/JPA DATE : 3/18/02  
 CHECKED BY : D.B. MOORE/HAL DATE : 4/10/02