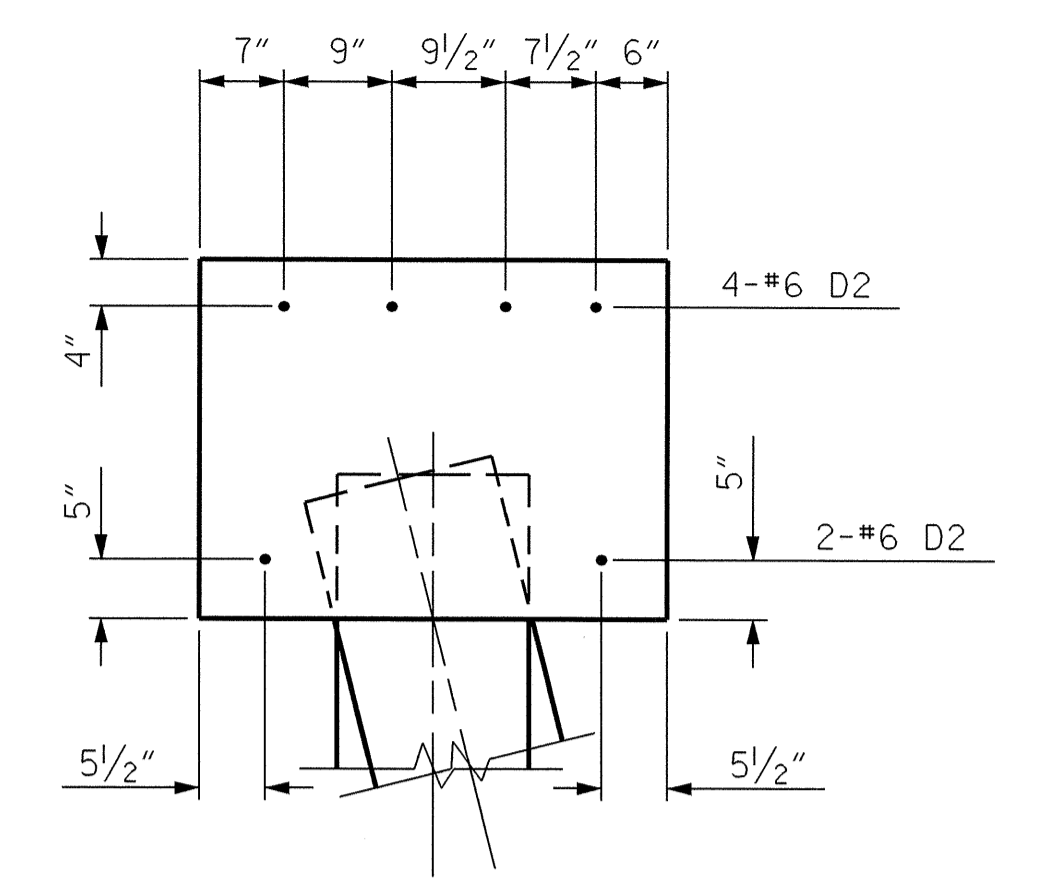
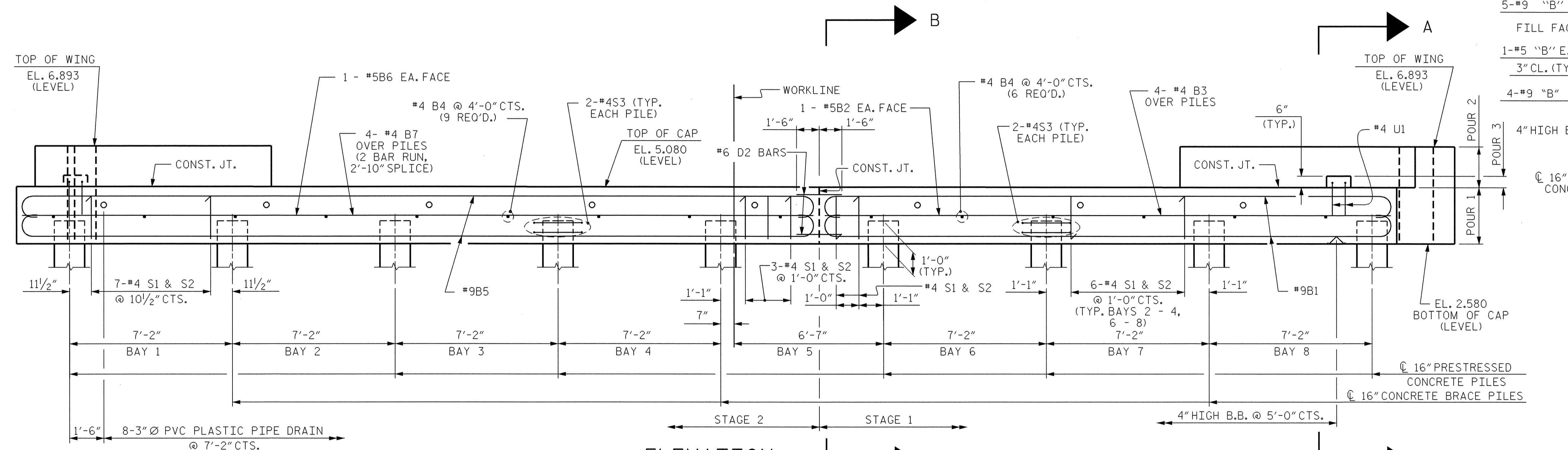


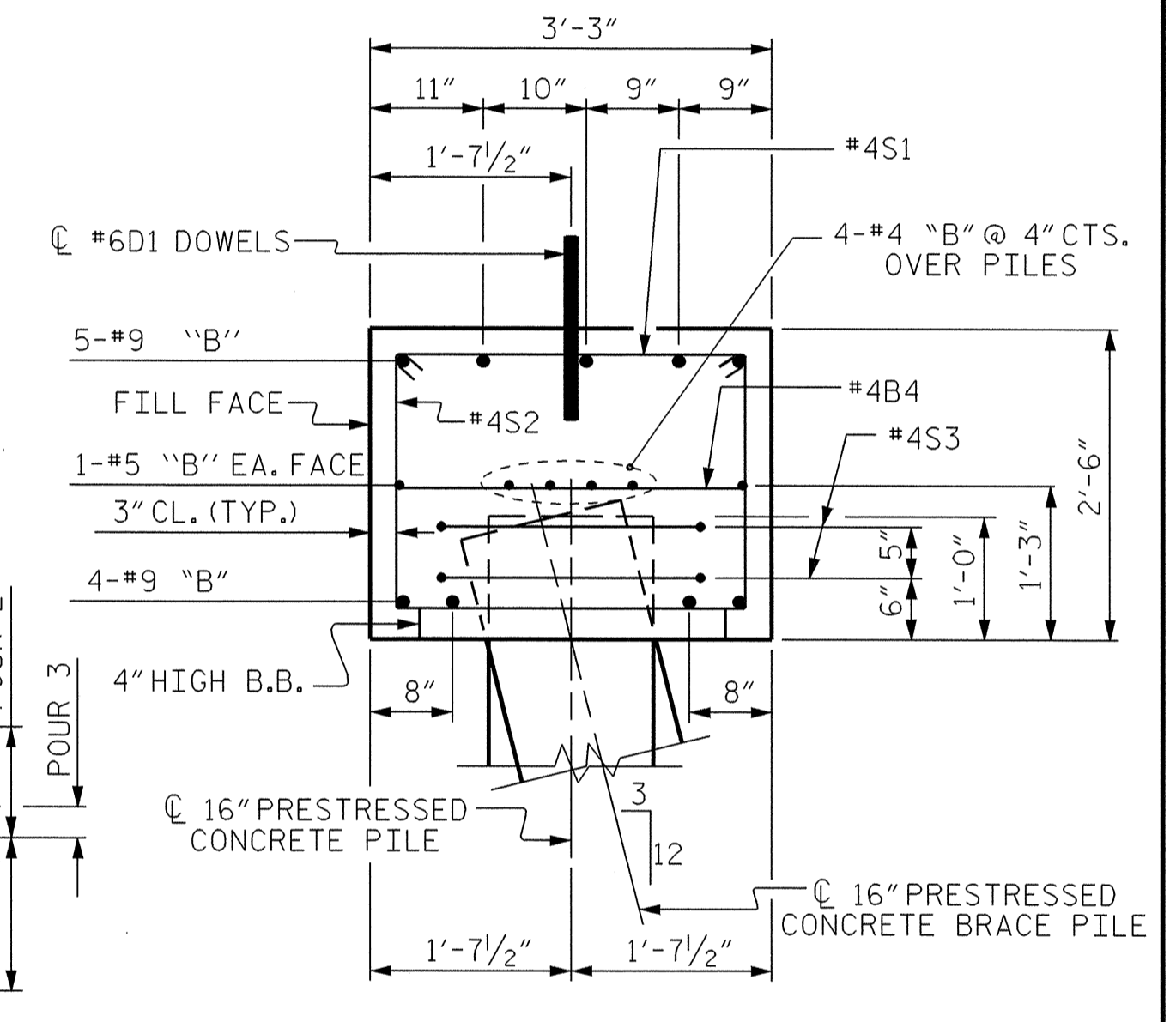
PLAN



SECTION B-B
(PLACEMENT OF DOWELS)



ELEVATION



SECTION A-A

NOTES

- STIRRUPS IN CAP MAY BE SHIFTED AS NECESSARY TO CLEAR DOWELS.
- PIPE DRAINS MAY BE SHIFTED SLIGHTLY AS NECESSARY TO CLEAR REINFORCING STEEL AND DOWELS.
- THE DOWELS AT THE CONSTRUCTION JOINT SHALL BE DRILLED AND GROUTED BEFORE STAGE 2 IS BUILT. DOWELS SHALL BE PARALLEL TO CAP.
- THE LATERAL GUIDE AT EACH END OF THE CAP IS NOT TO BE POURED UNTIL AFTER CORED SLAB UNITS ARE IN PLACE.
- ALL BAR SUPPORTS USED IN THE END BENT CAPS AND ALL INCIDENTAL REINFORCING STEEL SHALL BE EPOXY COATED IN ACCORDANCE WITH THE STANDARD SPECIFICATIONS.



PROJECT NO. B-3445
CURRITUCK COUNTY
 STATION: 24+18.00 -L-

SHEET 1 OF 2

REVISIONS						SHEET NO.
NO.	BY:	DATE:	NO.	BY:	DATE:	S-37
1			3			TOTAL SHEETS
2			4			43

DRAWN BY: H.A. LOCKLEAR DATE: 3/1/02
 CHECKED BY: D.B. MOORE DATE: 3/27/02